

Vehicle Detail Report

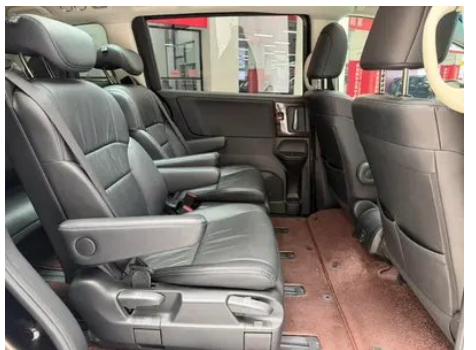
Honda Elysion 2016 2.4L Fashion Edition

Basic Information

Brand	Honda
Mileage	55,000 km
Color	Coffee color
First Registration	2019-04-01
Transfer Count	0

Vehicle Images







Vehicle Condition

1. Left rocker panel, Outer-side deformation. 2. Spare wheel well, Dust and sand residue. 3. Driver's seat rails and frame, Signs of removal. 4. Right rear quarter panel, Paint chip, Scratch, Deformation, Corrosion.

Configuration Information

Model Information

Model Name	Honda Elysion 2016 2.4L Fashion Edition
Launch Date	2016.03

Basic parameters

Vehicle Class	Mid-size MPV
Energy Type	Gasoline
Maximum Power (kW)	137
Maximum Torque (N·m)	243
Transmission	CVT continuously variable transmission
Body Type	MPV
Engine	2.4L 186 horsepower L4
Dimensions (L×W×H) (mm)	4940*1845*1710
Official 0-100 km/h Acceleration (s)	11.9
Top Speed (km/h)	199
Curb Weight (kg)	1895
Maximum Gross Weight (kg)	-
NEDC Combined Fuel Consumption (L/100km)	7.9

engine

Engine Model	K24V6
Displacement (mL)	2356
Displacement (L)	2.4
Induction Type	Natural aspiration

engine (continued)

Cylinder Arrangement	L
Number of Cylinders	4
Valves per Cylinder	4
Compression Ratio	11.1
Valve Train	DOHC
Bore (mm)	87
Stroke (mm)	99.1
Maximum Power (PS)	186
Max Power Speed (rpm)	6400
Max Torque Speed (rpm)	3900
Maximum net power (kW)	-
Fuel Grade	92.
Fuel Delivery System	Direct injection
Cylinder Head Material	Aluminum alloy
Cylinder Block Material	Aluminum alloy
Engine-specific technologies	i-VTEC

Screen/System

Central control color screen	<ul style="list-style-type: none">• Touch LCD screen
Infotainment Screen Size	<ul style="list-style-type: none">• 8 inches
Bluetooth/In-car Phone	<ul style="list-style-type: none">•
Smartphone Integration/Mirroring	<ul style="list-style-type: none">• Apple CarPlay support

Body

Length (mm)	4940
Width (mm)	1845
Height (mm)	1710
Wheelbase (mm)	2900
Front Track (mm)	1560
Rear Track (mm)	1560
Ground Clearance (Fully Loaded) (mm)	135
Door Opening Type	-
Number of Doors	5

Body (continued)

Number of Seats	7
Fuel Tank Capacity (L)	55
Trunk volume (L)	-
Drag Coefficient (Cd)	-

Gearbox

Abbreviation	CVT continuously variable transmission
Number of Gears	stepless speed change
Transmission Type	Continuously Variable Transmission (CVT)

Chassis steering

Drive Type	Front-engine, Front-wheel drive (FF)
Front Suspension Type	MacPherson independent suspension
Rear Suspension Type	Torsion beam non-independent suspension
Power Steering Type	Electric power assistance
Vehicle structure	bearing type

Seat Configuration

Seat Material	• Leather
Main seat adjustment	• Front and rear adjustment; • Backrest adjustment; • Height adjustment (4-way)
Co-seat adjustment method	• Front and rear adjustment; • Backrest adjustment
Electric adjustment of driver's seat and passenger seat	Main/Deputy-
Front seat functions	• Heating
Front passenger seat rear adjustable buttons	-
Second row seat adjustment	• Front and rear adjustment; • Backrest adjustment; • Leg rest adjustment; • Left and right adjustment
Rear seat folding	• Proportional down
Front/rear center armrest	Front •/Rear •
Rear cup holder	•
Seat Layout	•2-2-3

Seat Configuration (continued)

Second row independent seats	•
-------------------------------------	---

Active safety

Anti-lock Braking System (ABS)	•
Electronic Brakeforce Distribution (EBD/CBC)	•
Brake Assist System (EBA/BAS/BA)	•
Traction Control System (ASR/TCS/TRC)	•
Electronic Stability Control (ESC/ESP/DSC)	•
Seat Belt Reminder	• Front row
ISOFIX Child Seat Anchors	•
Lane Departure Warning System (LDWS)	-
Autonomous Emergency Braking (AEB)	-
Driver Fatigue Detection	-

Air conditioning/refrigerator

Air conditioning temperature control method	• Automatic air conditioning
Rear Independent Climate Control	•
Rear seat air vents	•
Temperature zone control	•
Car air purifier	-
In-cabin PM2.5 Filter	-

Passive safety

Driver/passenger airbag	Main •/Deputy •
Front/rear side airbags	Front •/Rear-
Front/rear head airbags (curtain airbags)	Front •/Rear •

Wheel brake

Front Brake Type	Ventilation disc
Rear Brake Type	Disc
Parking brake type	Foot brake

Wheel brake (continued)

Front Tire Size	225/50 R18
Rear Tire Size	225/50 R18
Spare Tire Size	Not full-size

Audio/Interior Lighting

Number of speakers	• 6 speakers
Interior ambient lighting	• Monochrome

Driving functions

Navigation traffic information display	-
Lane assist	-
Lane Keeping Assist System	-
Cruise control system	• Cruise control
Satellite navigation system	•
Parking Assist	-

Exterior lighting

Low beam light source	•LED
High beam light source	• Halogen
LED daytime running lights	-
Adaptive high and low beam	-
Automatic headlights	•
Front fog lights	•LED
Height-adjustable headlights	•
Headlight Delay Off	-

Exterior mirrors

Exterior mirror function	• Electric adjustment; • Electric folding
---------------------------------	---

Appearance/anti-theft

Rim material	• Aluminum alloy
Electronic engine immobilizer	•
Central locking system in the car	•
Key Type	• Remote key

Appearance/anti-theft (continued)

Keyless start system	<ul style="list-style-type: none">•
Keyless entry function	<ul style="list-style-type: none">• Front row
Sliding door type	<ul style="list-style-type: none">• Dual electric

Skylight/Glass

Sunroof Type	<ul style="list-style-type: none">• Sectional electric sunroof
Front/rear electric windows	Front •/Rear •
One-touch window lifting function	<ul style="list-style-type: none">• Driving position
Window anti-pinch function	<ul style="list-style-type: none">•
Car makeup mirror	<ul style="list-style-type: none">• Main driver's lamp;• co-pilot's lamp
Rear wiper	<ul style="list-style-type: none">•
Rear side privacy glass	<ul style="list-style-type: none">•

Interior and exterior color

Exterior Color	Pearl White #F0F0F0 Platinum Ya Brown #4E433F color crystal black #000000 Titanium Gold Silver #76757D Silver Moon Gray #76757D
Interior Color	Black:#000000

Steering wheel/interior mirror

Steering Wheel Material	<ul style="list-style-type: none">• Leather
Steering wheel position adjustment	<ul style="list-style-type: none">• Manual up and down front and rear adjustment
Multi-function steering wheel	<ul style="list-style-type: none">•
Heated Steering Wheel	-
Steering wheel memory	-
Trip computer display screen	<ul style="list-style-type: none">• Monochrome
Full LCD instrument panel	-
Interior rearview mirror function	<ul style="list-style-type: none">• Manual anti-glare

Intelligent configuration

Connected Car Services	-
OTA Updates	-

Driving Control

Driving Control (continued)

Driving mode switch	• Movement; • Economy
Automatic parking	-
Hill start assist	•
Engine start-stop technology	•

Driving Hardware

Front/rear parking radar	Front-/Rear •
---------------------------------	---------------

In-car charging

Multimedia/charging port	•USB;•HDMI
Number of USB/Type-C ports	• 1 in the front row
Luggage compartment 12V power socket	•

"●" = Standard equipment

"-" = Not available

"○" = Optional equipment.

Note: These are Chinese market vehicles. Warranty coverage is not available outside of China.