

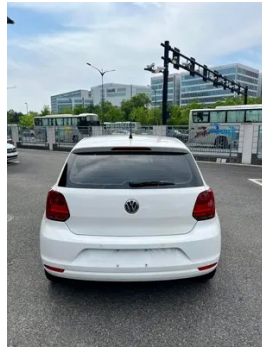
# Vehicle Detail Report

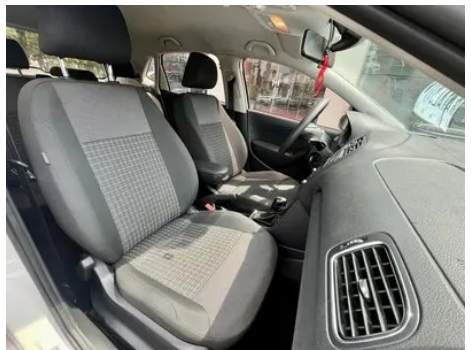
## Volkswagen Polo 2014 1.6L Automatic 30 Anniversary Edition

### Basic Information

Brand	Volkswagen
Mileage	160,000 km
Color	White
First Registration	2015-10-01
Transfer Count	1

### Vehicle Images





## Vehicle Condition

1. Radiator support, Signs of removal. 2. Left front frame rail, Deformation. 3. Left rocker panel, Scratch damage. 4. Right rocker panel, Scratch damage, Outer-side deformation. 5. Inner side of left B-pillar, Scratch. 6. Inner side of right C-pillar, Paint repair. 7. Rear body panel, Body panel repair. 8. Spare wheel well, Water stains, Soiling. 9. Headliner, Water stains, Soiling. 10. Hood, Paint chip, Scratch. 11. Front bumper, Paint repair, Signs of removal. 12. Rear bumper, Paint repair, Replaced, Scrape, Signs of removal. 13. Left front door, Paint repair, Body panel repair, Scratch. 14. Right front door, Scratch. 15. Left rear door, Signs of removal, Replaced, Scrape, Scratch. 16. Right rear door, Paint repair, Body panel repair. 17. Trunk lid, Paint repair, Body panel repair, Signs of removal, Replaced. 18. Left front fender, Paint chip, Scrape, Deformation, Signs of removal, Paint repair, Body panel repair, Replaced, Scratch. 19. Right front fender, Deformation, Scratch. 20. Left rear quarter panel, Scratch, Scrape, Deformation. 21. Right rear quarter panel, Scrape, Deformation, Paint repair, Body panel repair. 22. Windshield, Stone chip. 23. Left headlight, Signs of removal, Scratch. 24. Right headlight, Signs of removal. 25. Headliner, Water stains, Soiling.

## Configuration Information

### Model Information

## Model Information (continued)

<b>Model Name</b>	Volkswagen Polo 2014 1.6L Automatic 30 Anniversary Edition
<b>Launch Date</b>	2014.08

## Basic parameters

<b>Vehicle Class</b>	Small car
<b>Energy Type</b>	Gasoline
<b>Maximum Power (kW)</b>	81
<b>Maximum Torque (N·m)</b>	155
<b>Transmission</b>	6-speed manual integration
<b>Body Type</b>	Hatchback
<b>Engine</b>	1.6L 110 horsepower L4
<b>Dimensions (L×W×H) (mm)</b>	3970*1682*1462
<b>Official 0-100 km/h Acceleration (s)</b>	11.8
<b>Top Speed (km/h)</b>	185
<b>Curb Weight (kg)</b>	1120
<b>Maximum Gross Weight (kg)</b>	-

## engine

<b>Engine Model</b>	-
<b>Displacement (mL)</b>	1598
<b>Displacement (L)</b>	1.6
<b>Induction Type</b>	Natural aspiration
<b>Cylinder Arrangement</b>	L
<b>Number of Cylinders</b>	4
<b>Valves per Cylinder</b>	4
<b>Valve Train</b>	DOHC
<b>Maximum Power (PS)</b>	110
<b>Max Power Speed (rpm)</b>	5800
<b>Max Torque Speed (rpm)</b>	3800
<b>Maximum net power (kW)</b>	-
<b>Fuel Grade</b>	92.
<b>Fuel Delivery System</b>	Multi-point EFI
<b>Cylinder Head Material</b>	Aluminum alloy

## engine (continued)

<b>Cylinder Block Material</b>	Aluminum alloy
--------------------------------	----------------

## Screen/System

<b>Central control color screen</b>	<ul style="list-style-type: none"><li>•</li></ul>
<b>Bluetooth/In-car Phone</b>	<ul style="list-style-type: none"><li>•</li></ul>
<b>In-car CD/DVD Player</b>	<ul style="list-style-type: none"><li>• Single disc CD</li></ul>

## Body

<b>Length (mm)</b>	3970
<b>Width (mm)</b>	1682
<b>Height (mm)</b>	1462
<b>Wheelbase (mm)</b>	2470
<b>Front Track (mm)</b>	-
<b>Rear Track (mm)</b>	-
<b>Door Opening Type</b>	-
<b>Number of Doors</b>	5
<b>Number of Seats</b>	5
<b>Fuel Tank Capacity (L)</b>	45
<b>Trunk volume (L)</b>	250
<b>Drag Coefficient (Cd)</b>	-

## Gearbox

<b>Abbreviation</b>	6-speed manual integration
<b>Number of Gears</b>	6
<b>Transmission Type</b>	Automatic Transmission with Manual Mode (AT)

## Chassis steering

<b>Drive Type</b>	Front-engine, Front-wheel drive (FF)
<b>Front Suspension Type</b>	MacPherson independent suspension
<b>Rear Suspension Type</b>	Torsion beam non-independent suspension
<b>Power Steering Type</b>	Electric power assistance
<b>Vehicle structure</b>	bearing type

## Seat Configuration

<b>Seat Material</b>	<ul style="list-style-type: none"><li>• Leather</li></ul>
<b>Main seat adjustment</b>	<ul style="list-style-type: none"><li>• Front and rear adjustment;</li><li>• Backrest adjustment;</li><li>• Height adjustment (2-way)</li></ul>

## Seat Configuration (continued)

<b>Co-seat adjustment method</b>	• Front and rear adjustment; • Backrest adjustment
<b>Electric adjustment of driver's seat and passenger seat</b>	-
<b>Front passenger seat rear adjustable buttons</b>	-
<b>Rear seat folding</b>	• Proportional down
<b>Front/rear center armrest</b>	Front •/Rear-
<b>Rear cup holder</b>	•

## Active safety

<b>Anti-lock Braking System (ABS)</b>	•
<b>Electronic Brakeforce Distribution (EBD/CBC)</b>	•
<b>Brake Assist System (EBA/BAS/BA)</b>	•
<b>Traction Control System (ASR/TCS/TRC)</b>	•
<b>Electronic Stability Control (ESC/ESP/DSC)</b>	•
<b>Tire Pressure Monitoring System (TPMS)</b>	•
<b>Seat Belt Reminder</b>	•
<b>ISOFIX Child Seat Anchors</b>	•
<b>Lane Departure Warning System (LDWS)</b>	-
<b>Autonomous Emergency Braking (AEB)</b>	-
<b>Driver Fatigue Detection</b>	-

## Air conditioning/refrigerator

<b>Air conditioning temperature control method</b>	• Manual air conditioning; ○ Automatic air conditioning
<b>Rear Independent Climate Control</b>	-
<b>Rear seat air vents</b>	-
<b>Temperature zone control</b>	-
<b>Car air purifier</b>	-
<b>In-cabin PM2.5 Filter</b>	-

## Passive safety

<b>Driver/passenger airbag</b>	Main •/Deputy •
<b>Front/rear side airbags</b>	Front •/Rear-
<b>Front/rear head airbags (curtain airbags)</b>	-

## Wheel brake

<b>Front Brake Type</b>	Ventilation disc
<b>Rear Brake Type</b>	Drum type
<b>Parking brake type</b>	handbrake
<b>Front Tire Size</b>	185/60 R15
<b>Rear Tire Size</b>	185/60 R15
<b>Spare Tire Size</b>	Not full-size

## Audio/Interior Lighting

<b>Number of speakers</b>	• 6-7 Horns
---------------------------	-------------

## Driving functions

<b>Navigation traffic information display</b>	-
<b>Lane assist</b>	-
<b>Lane Keeping Assist System</b>	-
<b>Cruise control system</b>	• Cruise control
<b>Satellite navigation system</b>	•
<b>Parking Assist</b>	-

## Exterior lighting

<b>Low beam light source</b>	• Halogen
<b>High beam light source</b>	• Halogen
<b>LED daytime running lights</b>	-
<b>Adaptive high and low beam</b>	-
<b>Automatic headlights</b>	•
<b>Front fog lights</b>	•
<b>Height-adjustable headlights</b>	•
<b>Headlight Delay Off</b>	-

## Exterior mirrors

## Exterior mirrors (continued)

<b>Exterior mirror function</b>	<ul style="list-style-type: none"><li>• Electric adjustment;</li><li>• Mirror heating</li></ul>
---------------------------------	---

## Appearance/anti-theft

<b>Rim material</b>	<ul style="list-style-type: none"><li>• Aluminum alloy</li></ul>
<b>Electronic engine immobilizer</b>	<ul style="list-style-type: none"><li>•</li></ul>
<b>Central locking system in the car</b>	<ul style="list-style-type: none"><li>•</li></ul>
<b>Key Type</b>	<ul style="list-style-type: none"><li>• Remote key</li></ul>
<b>Keyless start system</b>	-

## Skylight/Glass

<b>Sunroof Type</b>	<ul style="list-style-type: none"><li>• Electric sunroof</li></ul>
<b>Front/rear electric windows</b>	Front •/Rear •
<b>Window anti-pinch function</b>	<ul style="list-style-type: none"><li>•</li></ul>
<b>Car makeup mirror</b>	<ul style="list-style-type: none"><li>•</li></ul>
<b>Rear wiper</b>	<ul style="list-style-type: none"><li>•</li></ul>
<b>Rain sensor wiper function</b>	<ul style="list-style-type: none"><li>•</li></ul>

## Interior and exterior color

<b>Exterior Color</b>	Polar White #FFFFFF
<b>Interior Color</b>	Black #000000 Black Gray #464B51 #757F89 Meng Yue Grey #4E4E4E

## Steering wheel/interior mirror

<b>Steering wheel position adjustment</b>	<ul style="list-style-type: none"><li>• Manual up and down front and rear adjustment</li></ul>
<b>Multi-function steering wheel</b>	-
<b>Heated Steering Wheel</b>	-
<b>Steering wheel memory</b>	-
<b>Trip computer display screen</b>	<ul style="list-style-type: none"><li>•</li></ul>
<b>Full LCD instrument panel</b>	-
<b>Interior rearview mirror function</b>	<ul style="list-style-type: none"><li>• Manual anti-glare</li></ul>

## Intelligent configuration

<b>Connected Car Services</b>	-
-------------------------------	---

## Intelligent configuration (continued)

<b>OTA Updates</b>	-
--------------------	---

## Driving Control

<b>Automatic parking</b>	-
--------------------------	---

## Driving Hardware

<b>Front/rear parking radar</b>	Front-/Rear •
---------------------------------	---------------

## In-car charging

<b>Multimedia/charging port</b>	•USB;•AUX;•SD
---------------------------------	---------------

---

"●" = Standard equipment

"-" = Not available

"○" = Optional equipment.

Note: These are Chinese market vehicles. Warranty coverage is not available outside of China.