

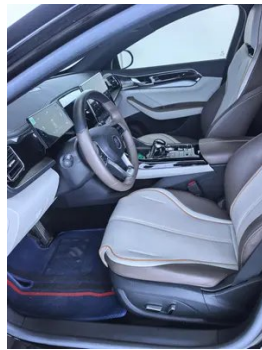
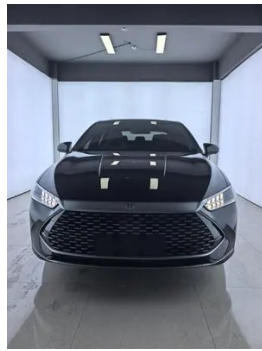
# Vehicle Detail Report

## BYD Qin PLUS 2023 DM-i Champion Edition 120KM Transcendent

### Basic Information

|                    |                   |
|--------------------|-------------------|
| Brand              | <b>BYD</b>        |
| Mileage            | <b>57,000 km</b>  |
| Color              | <b>Black</b>      |
| First Registration | <b>2023-10-01</b> |
| Transfer Count     | <b>1</b>          |

### Vehicle Images





## Vehicle Condition

1. Left rear door, Body panel repair. 2. Right rear door, Body panel repair.

## Configuration Information

### Model Information

|                    |  |
|--------------------|--|
| <b>Model Name</b>  | BYD Qin Plus 2023 Champion Edition DM-i 120KM Transcendent |
| <b>Launch Date</b> | 2023.02  |

### Basic parameters

|   |  |
|---|--|
| <b>Vehicle Class</b>  | compact car                              |
| <b>Energy Type</b>  | Plug-in Hybrid Electric Vehicle (PHEV)   |
| <b>Maximum Power (kW)</b>                                   | 81                                       |
| <b>Maximum Torque (N·m)</b>                                 | 135                                      |
| <b>Transmission</b>   | E-CVT continuously variable transmission |
| <b>Body Type</b>  | Sedan                                    |
| <b>Engine</b>   | 1.5L 110 horsepower L4                   |
| <b>Dimensions (L×W×H) (mm)</b>                              | 4765*1837*1495                           |
| <b>Official 0-100 km/h Acceleration (s)</b>                 | 7.3                                      |
| <b>Top Speed (km/h)</b>                                     | 185                                      |
| <b>Curb Weight (kg)</b>                                     | 1620                                     |
| <b>Maximum Gross Weight (kg)</b>                            | 1995                                     |
| <b>NEDC Electric Range (km)</b>                             | 120                                      |
| <b>Electric Motor (PS)</b>                                  | 197                                      |
| <b>Electricity Consumption in Fuel Equivalent (L/100km)</b> | 1.64                                     |
| <b>WLTC Electric Range (km)</b>                             | 101                                      |

## Basic parameters (continued)

|   |      |
|---|------|
| <b>Fuel Consumption with Depleted Battery (L/100km)</b> | 4.6  |
| <b>WLTP Combined Fuel Consumption (L/100km)</b>         | 1.58 |

## engine

|                                |                    |
|--------------------------------|--------------------|
| <b>Engine Model</b>            | BYD472QA           |
| <b>Displacement (mL)</b>       | 1498               |
| <b>Displacement (L)</b>        | 1.5                |
| <b>Induction Type</b>          | Natural aspiration |
| <b>Cylinder Arrangement</b>    | L                  |
| <b>Number of Cylinders</b>     | 4                  |
| <b>Valves per Cylinder</b>     | 4                  |
| <b>Valve Train</b>             | DOHC               |
| <b>Maximum Power (PS)</b>      | 110                |
| <b>Max Power Speed (rpm)</b>   | -                  |
| <b>Max Torque Speed (rpm)</b>  | -                  |
| <b>Maximum net power (kW)</b>  | -                  |
| <b>Fuel Grade</b>              | 92.                |
| <b>Fuel Delivery System</b>    | Multi-point EFI    |
| <b>Cylinder Head Material</b>  | Aluminum alloy     |
| <b>Cylinder Block Material</b> | Aluminum alloy     |
| <b>Engine layout</b>           | Horizontal         |

## Electric Motor

|  |                                |
|--|--------------------------------|
| <b>Motor Type</b>                            | Permanent magnet/synchronous   |
| <b>Total Electric Motor Power (kW)</b>       | 145                            |
| <b>Total Electric Motor Torque (N·m)</b>     | 325                            |
| <b>Front Electric Motor Max Power (kW)</b>   | 145                            |
| <b>Front Electric Motor Max Torque (N·m)</b> | 325                            |
| <b>Number of drive motors</b>                | Single motor                   |
| <b>Motor Layout</b>                          | Front-end                      |
| <b>Battery Type</b>                          | Lithium iron phosphate battery |
| <b>Battery Capacity (kWh)</b>                | 18.32                          |

## Electric Motor (continued)

|   |                |
|---|----------------|
| <b>Total Electric Motor Power (PS)</b>                  | 197            |
| <b>Battery Cell Brand</b>                               | Fodi           |
| <b>Battery Cooling System</b>                           | Liquid cooling |
| <b>Power consumption per 100 kilometers (kWh/100km)</b> | 14.5           |
| <b>Fast charging function</b>                           | Support        |
| <b>Fast Charging Power (kW)</b>                         | 17             |
| <b>Battery unique technology</b>                        | Blade Battery  |

## Screen/System

|  |   |
|--|---|
| <b>Central control color screen</b>        | <ul style="list-style-type: none"><li>• Touch LCD screen</li></ul>  |
| <b>Infotainment Screen Size</b>            | <ul style="list-style-type: none"><li>• 12.8 inches</li></ul>   |
| <b>Bluetooth/In-car Phone</b>              | <ul style="list-style-type: none"><li>•</li></ul>   |
| <b>Voice recognition control system</b>    | <ul style="list-style-type: none"><li>• Multimedia system;</li><li>• Navigation;</li><li>• Telephone;</li><li>• Air conditioning;</li><li>• Sunroof</li></ul> |
| <b>Voice wake-up recognition by region</b> | <ul style="list-style-type: none"><li>• Dual Zone</li></ul>   |
| <b>In-vehicle intelligent system</b>       | <ul style="list-style-type: none"><li>• DiLink</li></ul>  |
| <b>App Store</b>                           | <ul style="list-style-type: none"><li>•</li></ul>   |
| <b>Voice assistant wake-up word</b>        | <ul style="list-style-type: none"><li>• Hello, Xiao Di</li></ul>  |
| <b>Rotating large screen</b>               | <ul style="list-style-type: none"><li>•</li></ul>   |

## Body

|                               |            |
|-------------------------------|------------|
| <b>Length (mm)</b>            | 4765       |
| <b>Width (mm)</b>             | 1837       |
| <b>Height (mm)</b>            | 1495       |
| <b>Wheelbase (mm)</b>         | 2718       |
| <b>Front Track (mm)</b>       | 1580       |
| <b>Rear Track (mm)</b>        | 1590       |
| <b>Door Opening Type</b>      | swing door |
| <b>Number of Doors</b>        | 4          |
| <b>Number of Seats</b>        | 5          |
| <b>Fuel Tank Capacity (L)</b> | 48         |

## Body (continued)

|                                   |     |
|-----------------------------------|-----|
| <b>Trunk volume (L)</b>           | -   |
| <b>Drag Coefficient (Cd)</b>      | -   |
| <b>Approach Angle (°)</b>         | 13  |
| <b>Departure Angle (°)</b>        | 14  |
| <b>Minimum Turning Radius (m)</b> | 5.5 |

## Gearbox

|                          |   |
|--------------------------|---|
| <b>Abbreviation</b>      | E-CVT continuously variable transmission              |
| <b>Number of Gears</b>   | stepless speed change                                 |
| <b>Transmission Type</b> | Electronic Continuously Variable Transmission (E-CVT) |

## Chassis steering

|                              |   |
|------------------------------|---|
| <b>Drive Type</b>            | Front-engine, Front-wheel drive (FF)    |
| <b>Front Suspension Type</b> | MacPherson independent suspension       |
| <b>Rear Suspension Type</b>  | Torsion beam non-independent suspension |
| <b>Power Steering Type</b>   | Electric power assistance               |
| <b>Vehicle structure</b>     | bearing type                            |

## Seat Configuration

|  |   |
|--|---|
| <b>Seat Material</b>   | <ul style="list-style-type: none"><li>• Imitation leather</li></ul>   |
| <b>Main seat adjustment</b>                                    | <ul style="list-style-type: none"><li>• Front and rear adjustment;</li><li>• Backrest adjustment;</li><li>• Height adjustment (2-way)</li></ul> |
| <b>Co-seat adjustment method</b>                               | <ul style="list-style-type: none"><li>• Front and rear adjustment;</li><li>• Backrest adjustment</li></ul>                                      |
| <b>Electric adjustment of driver's seat and passenger seat</b> | Main/Deputy-  |
| <b>Front passenger seat rear adjustable buttons</b>            | -   |
| <b>Rear seat folding</b>                                       | <ul style="list-style-type: none"><li>• Proportional down</li></ul>   |
| <b>Front/rear center armrest</b>                               | Front •/Rear •  |
| <b>Rear cup holder</b>   | <ul style="list-style-type: none"><li>•</li></ul>   |
| <b>Sports style seats</b>                                      | <ul style="list-style-type: none"><li>•</li></ul>   |

## Active safety

|                                       |   |
|---------------------------------------|---|
| <b>Anti-lock Braking System (ABS)</b> | <ul style="list-style-type: none"><li>•</li></ul> |
|---------------------------------------|---|

## Active safety (continued)

|   |                         |
|---|-------------------------|
| <b>Electronic Brakeforce Distribution (EBD/CBC)</b> | •                       |
| <b>Brake Assist System (EBA/BAS/BA)</b>             | •                       |
| <b>Traction Control System (ASR/TCS/TRC)</b>        | •                       |
| <b>Electronic Stability Control (ESC/ESP/DSC)</b>   | •                       |
| <b>Tire Pressure Monitoring System (TPMS)</b>       | • Tire pressure display |
| <b>Seat Belt Reminder</b>                           | • Front row             |
| <b>ISOFIX Child Seat Anchors</b>                    | •                       |
| <b>Lane Departure Warning System (LDWS)</b>         | -                       |
| <b>Autonomous Emergency Braking (AEB)</b>           | -                       |
| <b>Driver Fatigue Detection</b>                     | -                       |
| <b>Low Speed Alert</b>                              | •                       |

## Air conditioning/refrigerator

|  |                              |
|--|------------------------------|
| <b>Air conditioning temperature control method</b> | • Automatic air conditioning |
| <b>Rear Independent Climate Control</b>            | -                            |
| <b>Rear seat air vents</b>                         | •                            |
| <b>Temperature zone control</b>                    | •                            |
| <b>Car air purifier</b>                            | -                            |
| <b>In-cabin PM2.5 Filter</b>                       | •                            |

## Passive safety

|  |                 |
|--|-----------------|
| <b>Driver/passenger airbag</b>                   | Main •/Deputy • |
| <b>Front/rear side airbags</b>                   | Front •/Rear-   |
| <b>Front/rear head airbags (curtain airbags)</b> | Front •/Rear •  |

## Wheel brake

|                           |                    |
|---------------------------|--------------------|
| <b>Front Brake Type</b>   | Ventilation disc   |
| <b>Rear Brake Type</b>    | Disc               |
| <b>Parking brake type</b> | Electronic Parking |
| <b>Front Tire Size</b>    | 215/55 R17         |

## Wheel brake (continued)

|                        |                   |
|------------------------|-------------------|
| <b>Rear Tire Size</b>  | 215/55 R17        |
| <b>Spare Tire Size</b> | Tire repair tools |

## Audio/Interior Lighting

|                           |              |
|---------------------------|--------------|
| <b>Number of speakers</b> | • 8 speakers |
|---------------------------|--------------|

## Driving functions

|   |                  |
|---|------------------|
| <b>Navigation traffic information display</b> | •                |
| <b>Lane assist</b>                            | -                |
| <b>Lane Keeping Assist System</b>             | -                |
| <b>Cruise control system</b>                  | • Cruise control |
| <b>Satellite navigation system</b>            | •                |
| <b>Remote Parking</b>                         | •                |
| <b>Parking Assist</b>                         | -                |

## Exterior lighting

|                                     |      |
|-------------------------------------|------|
| <b>Low beam light source</b>        | •LED |
| <b>High beam light source</b>       | •LED |
| <b>LED daytime running lights</b>   | •    |
| <b>Adaptive high and low beam</b>   | -    |
| <b>Automatic headlights</b>         | •    |
| <b>Height-adjustable headlights</b> | •    |
| <b>Headlight Delay Off</b>          | •    |

## Exterior mirrors

|                                 |   |
|---------------------------------|---|
| <b>Exterior mirror function</b> | • Electric adjustment; • Electric folding; • Rearview mirror heating; • Automatic folding when locked |
|---------------------------------|---|

## Appearance/anti-theft

|  |   |
|--|---|
| <b>Rim material</b>                      | • Aluminum alloy                              |
| <b>Electronic engine immobilizer</b>     | •   |
| <b>Central locking system in the car</b> | •   |
| <b>Key Type</b>                          | • Remote key; • Bluetooth key; • NFC/RFID key |
| <b>Keyless start system</b>              | •   |

## Appearance/anti-theft (continued)

|                                 |             |
|---------------------------------|-------------|
| <b>Keyless entry function</b>   | • Front row |
| <b>Remote start function</b>    | •           |
| <b>Battery preheating</b>       | •           |
| <b>Discharge to the outside</b> | •           |

## Skylight/Glass

|  |  |
|--|--|
| <b>Sunroof Type</b>                      | • Electric sunroof                       |
| <b>Front/rear electric windows</b>       | Front •/Rear •                           |
| <b>One-touch window lifting function</b> | • Full vehicle                           |
| <b>Window anti-pinch function</b>        | •  |
| <b>Car makeup mirror</b>                 | • Main driving position; • First officer |
| <b>Rear wiper</b>                        | -  |

## Interior and exterior color

|                       |   |
|-----------------------|---|
| <b>Exterior Color</b> | Snow Domain White #FFFFFF Chidi Red #B7242E ink blue #033570 Time Gray #404954 Xuankong Black #000000 |
| <b>Interior Color</b> | cloud blue #39414C Warm Sun Brown #724E4E   |

## Steering wheel/interior mirror

|   |  |
|---|--|
| <b>Steering Wheel Material</b>            | • Cortex                                       |
| <b>Steering wheel position adjustment</b> | • Manual up and down front and rear adjustment |
| <b>Multi-function steering wheel</b>      | •  |
| <b>Heated Steering Wheel</b>              | -  |
| <b>Steering wheel memory</b>              | -  |
| <b>Trip computer display screen</b>       | • Color  |
| <b>Full LCD instrument panel</b>          | -  |
| <b>LCD instrument size</b>                | • 8.8 inches                                   |
| <b>Interior rearview mirror function</b>  | • Manual anti-glare                            |
| <b>Gear shifting</b>                      | • Electronic gear shift                        |
| <b>Dashboard screen material</b>          | •LCD   |

## Intelligent configuration

## Intelligent configuration (continued)

|                                   |   |
|-----------------------------------|---|
| <b>Connected Car Services</b>     | <ul style="list-style-type: none"><li>•</li></ul>   |
| <b>OTA Updates</b>                | <ul style="list-style-type: none"><li>•</li></ul>   |
| <b>4G/5G Network</b>              | <ul style="list-style-type: none"><li>•4G</li></ul>   |
| <b>Mobile APP remote function</b> | <ul style="list-style-type: none"><li>• Door control;</li><li>• Vehicle start;</li><li>• Lighting control;</li><li>• Climate control;</li><li>• Vehicle status check/diagnostics;</li><li>• Vehicle location / find my car;</li><li>• Owner services (charging stations, gas stations, parking, etc.);</li><li>• Service/repair appointment</li></ul> |
| <b>Wi-Fi hotspots</b>             | <ul style="list-style-type: none"><li>•</li></ul>   |
| <b>Car KTV</b>                    | <ul style="list-style-type: none"><li>•</li></ul>   |

## Driving Control

|                               |  |
|-------------------------------|--|
| <b>Driving mode switch</b>    | <ul style="list-style-type: none"><li>• Sport;</li><li>• Economy;</li><li>• Standard/Comfort;</li><li>• Snow</li></ul> |
| <b>Automatic parking</b>      | <ul style="list-style-type: none"><li>•</li></ul>  |
| <b>Hill start assist</b>      | <ul style="list-style-type: none"><li>•</li></ul>  |
| <b>Energy recovery system</b> | <ul style="list-style-type: none"><li>•</li></ul>  |

## Driving Hardware

|   |  |
|---|--|
| <b>Front/rear parking radar</b>         | Front •/Rear •   |
| <b>Driving Assistance Camera System</b> | <ul style="list-style-type: none"><li>• 360-degree panoramic image</li></ul> |
| <b>Number of cameras</b>                | <ul style="list-style-type: none"><li>• 4</li></ul>                          |
| <b>Number of ultrasonic radars</b>      | <ul style="list-style-type: none"><li>• 6</li></ul>                          |

## In-car charging

|  |  |
|--|--|
| <b>Multimedia/charging port</b>                | <ul style="list-style-type: none"><li>•USB</li></ul>                                   |
| <b>Number of USB/Type-C ports</b>              | <ul style="list-style-type: none"><li>• 2 in the front row/2 in the back row</li></ul> |
| <b>Mobile phone wireless charging function</b> | <ul style="list-style-type: none"><li>• Front row</li></ul>                            |
| <b>USB/Type-C maximum charging power</b>       | <ul style="list-style-type: none"><li>•10W</li></ul>                                   |

---

"●" = Standard equipment

"□" = Not available

"○" = Optional equipment.

Note: These are Chinese market vehicles. Warranty coverage is not available outside of China.