

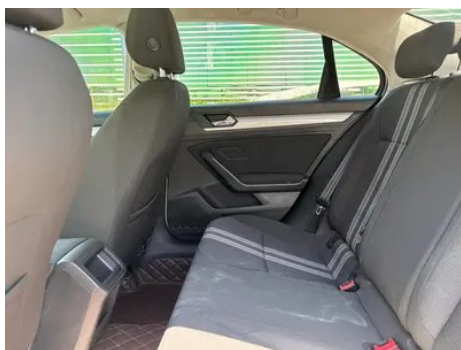
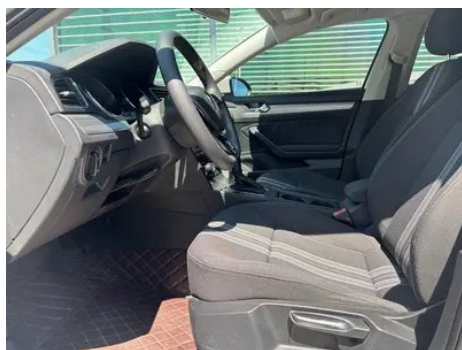
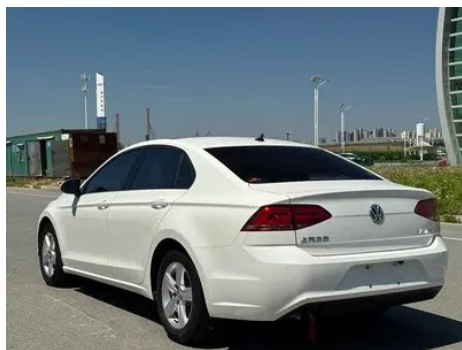
Vehicle Detail Report

Volkswagen Lamando 2017 230TSI DSG Fashion Edition

Basic Information

| | |
|--------------------|------------|
| Brand | Volkswagen |
| Mileage | 130,000 km |
| Color | White |
| First Registration | 2016-11-01 |
| Transfer Count | 0 |

Vehicle Images





Vehicle Condition

1. Left rocker panel, Paint repair. 2. Right rocker panel, Paint repair, Outer-side body panel repair. 3. Inner side of right B-pillar, Deformation. 4. Driver's seat rails and frame, Signs of removal. 5. Front passenger seat rails and frame, Signs of removal. 6. Headliner, Detached, Water stains, Soiling. 7. Left rear quarter panel, Paint repair, Body panel repair. 8. Headliner, Detached, Water stains, Soiling.

Configuration Information

Model Information

| | |
|--------------------|--|
| Model Name | Volkswagen Lamando 2017 230TSI DSG Fashion Edition |
| Launch Date | 2016.08 |

Basic parameters

| | |
|---|-------------------------|
| Vehicle Class | compact car |
| Energy Type | Gasoline |
| Maximum Power (kW) | 96 |
| Maximum Torque (N·m) | 225 |
| Transmission | 7-speed dry dual clutch |
| Body Type | Sedan |
| Engine | 1.4T 131 horsepower L4 |
| Dimensions (L×W×H) (mm) | 4598*1826*1425 |
| Official 0-100 km/h Acceleration (s) | - |
| Top Speed (km/h) | 206 |
| Curb Weight (kg) | 1325 |
| Maximum Gross Weight (kg) | - |

engine

| | |
|--------------------------|---------------|
| Engine Model | EA211-CST |
| Displacement (mL) | 1395 |
| Displacement (L) | 1.4 |
| Induction Type | Turbocharging |

engine (continued)

| | |
|--------------------------------|------------------|
| Cylinder Arrangement | L |
| Number of Cylinders | 4 |
| Valves per Cylinder | 4 |
| Valve Train | DOHC |
| Maximum Power (PS) | 131 |
| Max Power Speed (rpm) | 5000 |
| Max Torque Speed (rpm) | 1400-3500 |
| Maximum net power (kW) | - |
| Fuel Grade | 95. |
| Fuel Delivery System | Direct injection |
| Cylinder Head Material | Aluminum alloy |
| Cylinder Block Material | Aluminum alloy |

Screen/System

| | |
|-------------------------------|--|
| Bluetooth/In-car Phone | <ul style="list-style-type: none">• |
| In-car CD/DVD Player | <ul style="list-style-type: none">• Single disc CD |

Body

| | |
|-------------------------------|----------|
| Length (mm) | 4598 |
| Width (mm) | 1826 |
| Height (mm) | 1425 |
| Wheelbase (mm) | 2656 |
| Front Track (mm) | - |
| Rear Track (mm) | - |
| Door Opening Type | - |
| Number of Doors | 4 |
| Number of Seats | 5 |
| Fuel Tank Capacity (L) | 50 |
| Trunk volume (L) | 480-1150 |
| Drag Coefficient (Cd) | - |

Gearbox

| | |
|--------------------------|------------------------------------|
| Abbreviation | 7-speed dry dual clutch |
| Number of Gears | 7 |
| Transmission Type | Dry Dual-Clutch Transmission (DCT) |

Chassis steering

| | |
|-------------------|--------------------------------------|
| Drive Type | Front-engine, Front-wheel drive (FF) |
|-------------------|--------------------------------------|

Chassis steering (continued)

| | |
|------------------------------|-----------------------------------|
| Front Suspension Type | MacPherson independent suspension |
| Rear Suspension Type | Multi-link independent suspension |
| Power Steering Type | Electric power assistance |
| Vehicle structure | bearing type |

Seat Configuration

| | |
|--|---|
| Seat Material | <ul style="list-style-type: none">• Fabric |
| Main seat adjustment | <ul style="list-style-type: none">• Front and rear adjustment;• Backrest adjustment;• Height adjustment (2-way) |
| Co-seat adjustment method | <ul style="list-style-type: none">• Front and rear adjustment;• Backrest adjustment;• Height adjustment (2-way) |
| Electric adjustment of driver's seat and passenger seat | - |
| Front passenger seat rear adjustable buttons | - |
| Rear seat folding | <ul style="list-style-type: none">• Proportional down |
| Front/rear center armrest | Front •/Rear- |
| Rear cup holder | - |

Active safety

| | |
|---|---|
| Anti-lock Braking System (ABS) | <ul style="list-style-type: none">• |
| Electronic Brakeforce Distribution (EBD/CBC) | <ul style="list-style-type: none">• |
| Brake Assist System (EBA/BAS/BA) | <ul style="list-style-type: none">• |
| Traction Control System (ASR/TCS/TRC) | <ul style="list-style-type: none">• |
| Electronic Stability Control (ESC/ESP/DSC) | <ul style="list-style-type: none">• |
| Tire Pressure Monitoring System (TPMS) | <ul style="list-style-type: none">• |
| Seat Belt Reminder | <ul style="list-style-type: none">• |
| ISOFIX Child Seat Anchors | <ul style="list-style-type: none">• |
| Lane Departure Warning System (LDWS) | - |
| Autonomous Emergency Braking (AEB) | - |

Active safety (continued)

| | |
|---------------------------------|---|
| Driver Fatigue Detection | - |
|---------------------------------|---|

Air conditioning/refrigerator

| | |
|--|---------------------------|
| Air conditioning temperature control method | • Manual air conditioning |
| Rear Independent Climate Control | - |
| Rear seat air vents | - |
| Temperature zone control | - |
| Car air purifier | - |
| In-cabin PM2.5 Filter | - |

Passive safety

| | |
|--|-----------------|
| Driver/passenger airbag | Main •/Deputy • |
| Front/rear side airbags | Front •/Rear- |
| Front/rear head airbags (curtain airbags) | - |

Wheel brake

| | |
|---------------------------|--------------------|
| Front Brake Type | Ventilation disc |
| Rear Brake Type | Disc |
| Parking brake type | Electronic Parking |
| Front Tire Size | 205/60 R16 |
| Rear Tire Size | 205/60 R16 |
| Spare Tire Size | Not full-size |

Audio/Interior Lighting

| | |
|---------------------------|-------------|
| Number of speakers | • 6-7 Horns |
|---------------------------|-------------|

Driving functions

| | |
|---|---|
| Navigation traffic information display | - |
| Lane assist | - |
| Lane Keeping Assist System | - |
| Satellite navigation system | - |
| Parking Assist | - |

Exterior lighting

| | |
|-------------------------------|-----------|
| Low beam light source | • Halogen |
| High beam light source | • Halogen |

Exterior lighting (continued)

| | |
|-------------------------------------|---|
| LED daytime running lights | - |
| Adaptive high and low beam | - |
| Automatic headlights | - |
| Front fog lights | • |
| Height-adjustable headlights | • |
| Headlight Delay Off | - |
| Turn signal lamp | • |

Exterior mirrors

| | |
|---------------------------------|---|
| Exterior mirror function | • Electric adjustment; • Mirror heating |
|---------------------------------|---|

Appearance/anti-theft

| | |
|--|------------------|
| Rim material | • Aluminum alloy |
| Electronic engine immobilizer | • |
| Central locking system in the car | • |
| Key Type | • Remote key |
| Keyless start system | - |

Skylight/Glass

| | |
|--|--------------------|
| Sunroof Type | ○ Electric sunroof |
| Front/rear electric windows | Front •/Rear • |
| One-touch window lifting function | • Full vehicle |
| Window anti-pinch function | • |
| Car makeup mirror | • |
| Rear wiper | - |

Interior and exterior color

| | |
|-----------------------|---|
| Exterior Color | Modern Brown #644336 wild black #000000 Blow white #FFFFFF sharp red #BC0006 surging blue #2334B8 dazzling gold #A98E58 |
| Interior Color | Black:#000000 |

Steering wheel/interior mirror

| | |
|---|--|
| Steering wheel position adjustment | • Manual up and down front and rear adjustment |
|---|--|

Steering wheel/interior mirror (continued)

| | |
|--|---------------------|
| Multi-function steering wheel | - |
| Heated Steering Wheel | - |
| Steering wheel memory | - |
| Trip computer display screen | • |
| Full LCD instrument panel | - |
| Interior rearview mirror function | • Manual anti-glare |

Intelligent configuration

| | |
|-------------------------------|---|
| Connected Car Services | - |
| OTA Updates | - |

Driving Control

| | |
|-------------------------------------|---|
| Automatic parking | • |
| Engine start-stop technology | • |

Driving Hardware

| | |
|---------------------------------|---------------|
| Front/rear parking radar | Front-/Rear • |
|---------------------------------|---------------|

In-car charging

| | |
|---------------------------------|---------------|
| Multimedia/charging port | •USB;•AUX;•SD |
|---------------------------------|---------------|

Optional Package

| | |
|-------------------------|--|
| Optional Package | Elegant Peer Optional Bag (1 yuan High-strength ultra-wide-angle double-opening sunroof Sun visor vanity mirror lamp Roof Glasses Box Front and back LED Reading lamp) |
|-------------------------|--|

"●" = Standard equipment

"-" = Not available

"○" = Optional equipment.

Note: These are Chinese market vehicles. Warranty coverage is not available outside of China.