

# Vehicle Detail Report

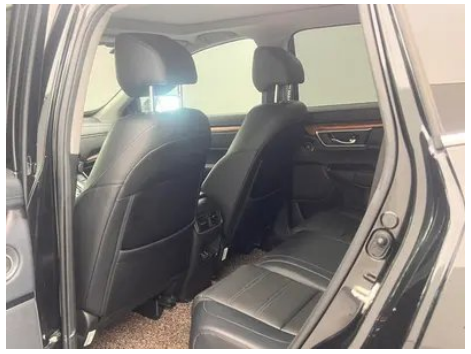
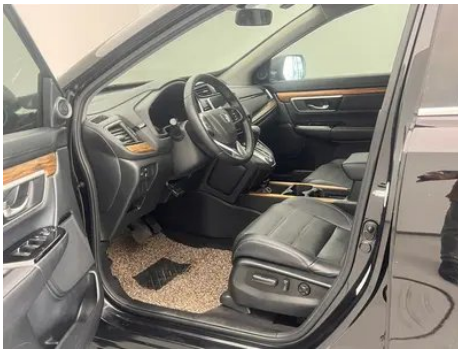
Honda CR-V 2017 240TURBO CVT Four-wheel drive deluxe edition

## Basic Information

Brand	Honda
Mileage	92,000 km
Color	Black
First Registration	2018-12-01
Transfer Count	1

## Vehicle Images





## Vehicle Condition

1. Trunk lid, Paint repair. 2. Left rocker panel exterior trim, Scratch. 3. Right rocker panel exterior trim, Scratch.

## Configuration Information

### Model Information

<b>Model Name</b>	Honda CR-V 2017 240TURBO CVT Four-wheel drive deluxe edition
<b>Launch Date</b>	2017.07

### Basic parameters

<b>Vehicle Class</b>	Compact SUV
<b>Energy Type</b>	Gasoline
<b>Maximum Power (kW)</b>	142
<b>Maximum Torque (N·m)</b>	243
<b>Transmission</b>	CVT continuously variable transmission
<b>Body Type</b>	SUV
<b>Engine</b>	1.5T 193 horsepower L4
<b>Dimensions (L×W×H) (mm)</b>	4585*1855*1689

## Basic parameters (continued)

<b>Official 0-100 km/h Acceleration (s)</b>	9.9
<b>Top Speed (km/h)</b>	-
<b>Curb Weight (kg)</b>	1609
<b>Maximum Gross Weight (kg)</b>	-
<b>NEDC Combined Fuel Consumption (L/100km)</b>	6.7

## engine

<b>Engine Model</b>	L15BL
<b>Displacement (mL)</b>	1498
<b>Displacement (L)</b>	1.5
<b>Induction Type</b>	Turbocharging
<b>Cylinder Arrangement</b>	L
<b>Number of Cylinders</b>	4
<b>Valves per Cylinder</b>	4
<b>Compression Ratio</b>	10.3
<b>Valve Train</b>	DOHC
<b>Maximum Power (PS)</b>	193
<b>Max Power Speed (rpm)</b>	5600
<b>Max Torque Speed (rpm)</b>	2000-5000
<b>Maximum net power (kW)</b>	-
<b>Fuel Grade</b>	92.
<b>Fuel Delivery System</b>	Direct injection
<b>Cylinder Head Material</b>	Aluminum alloy
<b>Cylinder Block Material</b>	Aluminum alloy
<b>Engine-specific technologies</b>	VTEC

## Screen/System

<b>Central control color screen</b>	<ul style="list-style-type: none"><li>•</li></ul>
<b>Infotainment Screen Size</b>	<ul style="list-style-type: none"><li>• 7 inches</li></ul>
<b>Bluetooth/In-car Phone</b>	<ul style="list-style-type: none"><li>•</li></ul>
<b>Smartphone Integration/Mirroring</b>	<ul style="list-style-type: none"><li>•</li></ul>

## Body

## Body (continued)

<b>Length (mm)</b>	4585
<b>Width (mm)</b>	1855
<b>Height (mm)</b>	1689
<b>Wheelbase (mm)</b>	2660
<b>Front Track (mm)</b>	-
<b>Rear Track (mm)</b>	-
<b>Door Opening Type</b>	-
<b>Number of Doors</b>	5
<b>Number of Seats</b>	5
<b>Fuel Tank Capacity (L)</b>	57
<b>Trunk volume (L)</b>	-
<b>Drag Coefficient (Cd)</b>	-

## Gearbox

<b>Abbreviation</b>	CVT continuously variable transmission
<b>Number of Gears</b>	stepless speed change
<b>Transmission Type</b>	Continuously Variable Transmission (CVT)

## Chassis steering

<b>Drive Type</b>	Front-engine, All-wheel drive (F-AWD)
<b>Four-wheel drive</b>	Timely four-wheel drive
<b>Central differential structure</b>	Multi-plate clutch
<b>Front Suspension Type</b>	MacPherson independent suspension
<b>Rear Suspension Type</b>	Multi-link independent suspension
<b>Power Steering Type</b>	Electric power assistance
<b>Vehicle structure</b>	bearing type

## Seat Configuration

<b>Seat Material</b>	• Leather
<b>Main seat adjustment</b>	• Front and rear adjustment; • Backrest adjustment; • Height adjustment (2-way); • Height adjustment (4-way)
<b>Co-seat adjustment method</b>	• Front and rear adjustment; • Backrest adjustment

## Seat Configuration (continued)

<b>Electric adjustment of driver's seat and passenger seat</b>	Main •/Deputy •
<b>Front seat functions</b>	• Heating
<b>Front passenger seat rear adjustable buttons</b>	-
<b>Second row seat adjustment</b>	• Backrest adjustment
<b>Rear seat folding</b>	• Proportional down
<b>Front/rear center armrest</b>	Front •/Rear •
<b>Rear cup holder</b>	•

## Active safety

<b>Anti-lock Braking System (ABS)</b>	•
<b>Electronic Brakeforce Distribution (EBD/CBC)</b>	•
<b>Brake Assist System (EBA/BAS/BA)</b>	•
<b>Traction Control System (ASR/TCS/TRC)</b>	•
<b>Electronic Stability Control (ESC/ESP/DSC)</b>	•
<b>Tire Pressure Monitoring System (TPMS)</b>	•
<b>Seat Belt Reminder</b>	•
<b>ISOFIX Child Seat Anchors</b>	•
<b>Lane Departure Warning System (LDWS)</b>	-
<b>Autonomous Emergency Braking (AEB)</b>	-
<b>Driver Fatigue Detection</b>	•
<b>Emergency Call System (eCall)</b>	•

## Air conditioning/refrigerator

<b>Air conditioning temperature control method</b>	• Automatic air conditioning
<b>Rear Independent Climate Control</b>	-
<b>Rear seat air vents</b>	•

## Air conditioning/refrigerator (continued)

Temperature zone control	•
Car air purifier	-
In-cabin PM2.5 Filter	-

## Passive safety

Driver/passenger airbag	Main •/Deputy •
Front/rear side airbags	Front •/Rear-
Front/rear head airbags (curtain airbags)	Front •/Rear •

## Wheel brake

Front Brake Type	Ventilation disc
Rear Brake Type	Disc
Parking brake type	Electronic Parking
Front Tire Size	235/65 R17
Rear Tire Size	235/65 R17
Spare Tire Size	Not full-size

## Audio/Interior Lighting

Number of speakers	• 8-9 speakers
--------------------	----------------

## Driving functions

Navigation traffic information display	-
Lane assist	-
Lane Keeping Assist System	-
Cruise control system	• Cruise control
Satellite navigation system	•
Parking Assist	-

## Exterior lighting

Low beam light source	• Halogen
High beam light source	• Halogen
LED daytime running lights	•
Adaptive high and low beam	-
Automatic headlights	•
Front fog lights	•

## Exterior lighting (continued)

<b>Height-adjustable headlights</b>	<ul style="list-style-type: none"><li>•</li></ul>
<b>Headlight Delay Off</b>	-

## Exterior mirrors

<b>Exterior mirror function</b>	<ul style="list-style-type: none"><li>• Electric adjustment;</li><li>• Electric folding;</li><li>• Mirror heating</li></ul>
---------------------------------	---

## Appearance/anti-theft

<b>Rim material</b>	<ul style="list-style-type: none"><li>• Aluminum alloy</li></ul>
<b>Electronic engine immobilizer</b>	<ul style="list-style-type: none"><li>•</li></ul>
<b>Central locking system in the car</b>	<ul style="list-style-type: none"><li>•</li></ul>
<b>Key Type</b>	<ul style="list-style-type: none"><li>• Remote key</li></ul>
<b>Keyless start system</b>	<ul style="list-style-type: none"><li>•</li></ul>
<b>Keyless entry function</b>	<ul style="list-style-type: none"><li>•</li></ul>
<b>Remote start function</b>	<ul style="list-style-type: none"><li>•</li></ul>
<b>Active closed grille</b>	<ul style="list-style-type: none"><li>•</li></ul>

## Skylight/Glass

<b>Sunroof Type</b>	<ul style="list-style-type: none"><li>• Panoramic sunroof</li></ul>
<b>Front/rear electric windows</b>	Front <ul style="list-style-type: none"><li>•</li></ul> /Rear <ul style="list-style-type: none"><li>•</li></ul>
<b>One-touch window lifting function</b>	<ul style="list-style-type: none"><li>• Driving position</li></ul>
<b>Window anti-pinch function</b>	<ul style="list-style-type: none"><li>•</li></ul>
<b>Car makeup mirror</b>	<ul style="list-style-type: none"><li>•</li></ul>
<b>Rear wiper</b>	<ul style="list-style-type: none"><li>•</li></ul>
<b>Rear side privacy glass</b>	<ul style="list-style-type: none"><li>•</li></ul>

## Interior and exterior color

<b>Exterior Color</b>	Pearl White #F0F0F0 color crystal black #000000 Crimson Red #B60202 Amber brown #4E433F Jade yellow #9B962E
<b>Interior Color</b>	Black:#000000; Black/Beige:#000000/#E0BF62; Black/Brown:#000000/#80563D

## Steering wheel/interior mirror

<b>Steering Wheel Material</b>	<ul style="list-style-type: none"><li>• Cortex</li></ul>
<b>Steering wheel position adjustment</b>	<ul style="list-style-type: none"><li>• Manual up and down front and rear adjustment</li></ul>

## Steering wheel/interior mirror (continued)

<b>Multi-function steering wheel</b>	•
<b>Heated Steering Wheel</b>	-
<b>Steering wheel memory</b>	-
<b>Trip computer display screen</b>	•
<b>Full LCD instrument panel</b>	-
<b>Interior rearview mirror function</b>	• Manual anti-glare

## Intelligent configuration

<b>Connected Car Services</b>	•
<b>OTA Updates</b>	-
<b>Active Noise Cancellation</b>	•

## Driving Control

<b>Automatic parking</b>	•
<b>Hill start assist</b>	•
<b>Variable steering ratio</b>	•
<b>Engine start-stop technology</b>	•

## Driving Hardware

<b>Front/rear parking radar</b>	Front-/Rear •
<b>Driving Assistance Camera System</b>	• Reversing image

## In-car charging

<b>Multimedia/charging port</b>	•USB;•HDMI
---------------------------------	------------

"●" = Standard equipment

"-" = Not available

"○" = Optional equipment.

Note: These are Chinese market vehicles. Warranty coverage is not available outside of China.