

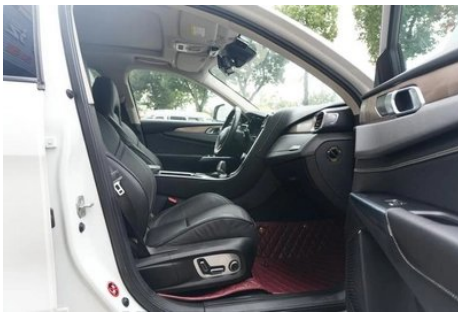
Vehicle Detail Report

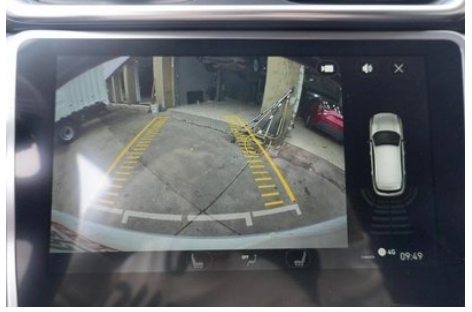
Lynk & Co 01 2017 2.0T two-drive type Pro version

Basic Information

Brand	LYNK & CO
Mileage	86,000 km
Color	White
First Registration	2018-02-01
Transfer Count	1

Vehicle Images





Vehicle Condition

1. Original metal panels and factory paint.

Configuration Information

Model Information

Model Name	Lynk & Co 01 2017 Model 2.0T Two-Wheel Drive Pro Version
-------------------	--

Model Information (continued)

Launch Date	-
--------------------	---

Basic parameters

Vehicle Class	Compact SUV
Energy Type	Gasoline
Maximum Power (kW)	140
Maximum Torque (N·m)	300
Transmission	6-speed manual integration
Body Type	SUV
Engine	2.0L 190 hp L4
Dimensions (L×W×H) (mm)	4512*1857*1673
Official 0-100 km/h Acceleration (s)	7.7
Top Speed (km/h)	210
Curb Weight (kg)	1632
Maximum Gross Weight (kg)	-
NEDC Combined Fuel Consumption (L/100km)	6.5

engine

Engine Model	B4204T30
Displacement (mL)	1969
Displacement (L)	2.0
Induction Type	Turbocharging
Cylinder Arrangement	L
Number of Cylinders	4
Valves per Cylinder	4
Valve Train	DOHC
Maximum Power (PS)	190
Max Power Speed (rpm)	4700
Max Torque Speed (rpm)	1400-4000
Maximum net power (kW)	-
Fuel Grade	95.
Fuel Delivery System	Direct injection
Cylinder Head Material	Aluminum alloy

engine (continued)

Cylinder Block Material	Aluminum alloy
Engine layout	Horizontal

Screen/System

Central control color screen	<ul style="list-style-type: none">• Touch LCD screen
Infotainment Screen Size	<ul style="list-style-type: none">• 10.2 inches
Bluetooth/In-car Phone	<ul style="list-style-type: none">•
Smartphone Integration/Mirroring	<ul style="list-style-type: none">• Support CarPlay;• Support CarLife
Voice recognition control system	<ul style="list-style-type: none">• Multimedia system;• Navigation;• Telephone;• Air conditioning

Body

Length (mm)	4512
Width (mm)	1857
Height (mm)	1673
Wheelbase (mm)	2734
Front Track (mm)	1592
Rear Track (mm)	1597
Door Opening Type	swing door
Number of Doors	5
Number of Seats	5
Fuel Tank Capacity (L)	54
Trunk volume (L)	509-1397
Drag Coefficient (Cd)	-
Minimum ground clearance without load (mm)	211

Gearbox

Abbreviation	6-speed manual integration
Number of Gears	6
Transmission Type	Automatic Transmission with Manual Mode (AT)

Chassis steering

Drive Type	Front-engine, Front-wheel drive (FF)
Front Suspension Type	MacPherson independent suspension
Rear Suspension Type	Multi-link independent suspension

Chassis steering (continued)

Power Steering Type	Electric power assistance
Vehicle structure	bearing type

Seat Configuration

Seat Material	<ul style="list-style-type: none">• Leather
Main seat adjustment	<ul style="list-style-type: none">• Front and rear adjustment;• Backrest adjustment;• Height adjustment (4-way);• Lumbar support (4-way)
Co-seat adjustment method	<ul style="list-style-type: none">• Front and rear adjustment;• Backrest adjustment;• Height adjustment (4-way);• Lumbar support (4-way)
Electric adjustment of driver's seat and passenger seat	Main •/Deputy •
Front seat functions	<ul style="list-style-type: none">• Heating
Front passenger seat rear adjustable buttons	-
Rear seat folding	<ul style="list-style-type: none">• Proportional down
Front/rear center armrest	Front •/Rear •
Rear cup holder	<ul style="list-style-type: none">•

Active safety

Anti-lock Braking System (ABS)	<ul style="list-style-type: none">•
Electronic Brakeforce Distribution (EBD/CBC)	<ul style="list-style-type: none">•
Brake Assist System (EBA/BAS/BA)	<ul style="list-style-type: none">•
Traction Control System (ASR/TCS/TRC)	<ul style="list-style-type: none">•
Electronic Stability Control (ESC/ESP/DSC)	<ul style="list-style-type: none">•
Tire Pressure Monitoring System (TPMS)	<ul style="list-style-type: none">• Tire pressure alarm
Seat Belt Reminder	<ul style="list-style-type: none">• Front row
ISOFIX Child Seat Anchors	<ul style="list-style-type: none">•
Lane Departure Warning System (LDWS)	<ul style="list-style-type: none">•
Autonomous Emergency Braking (AEB)	<ul style="list-style-type: none">•
Driver Fatigue Detection	<ul style="list-style-type: none">•

Active safety (continued)

Emergency Call System (eCall)	•
--------------------------------------	---

Air conditioning/refrigerator

Air conditioning temperature control method	• Automatic air conditioning
Rear Independent Climate Control	-
Rear seat air vents	•
Temperature zone control	•
Car air purifier	-
In-cabin PM2.5 Filter	-

Passive safety

Driver/passenger airbag	Main •/Deputy •
Front/rear side airbags	Front •/Rear-
Front/rear head airbags (curtain airbags)	Front •/Rear •

Wheel brake

Front Brake Type	Ventilation disc
Rear Brake Type	Disc
Parking brake type	Electronic Parking
Front Tire Size	235/50 R19
Rear Tire Size	235/50 R19
Spare Tire Size	Not full-size

Audio/Interior Lighting

Speaker Brand Name	• Infinity Yanfei Lishi
Number of speakers	• 10 speakers
Interior ambient lighting	• Monochrome

Driving functions

Navigation traffic information display	•
Lane assist	•
Lane Keeping Assist System	•
Cruise control system	• Adaptive cruise
Satellite navigation system	•

Driving functions (continued)

Road traffic sign recognition	•
Parking Assist	-

Exterior lighting

Low beam light source	•LED
High beam light source	•LED
LED daytime running lights	•
Adaptive high and low beam	•
Automatic headlights	•
Front fog lights	•LED
Height-adjustable headlights	•
Headlight Delay Off	•
Turn headlights	•
Turn signal lamp	•

Exterior mirrors

Exterior mirror function	• Electric adjustment; • Electric folding; • Rearview mirror heating; • Automatic folding when locked
---------------------------------	---

Appearance/anti-theft

Rim material	• Aluminum alloy
Electric trunk	•
Electronic engine immobilizer	•
Central locking system in the car	•
Key Type	• Remote key
Keyless start system	•
Keyless entry function	• Full car
Electric trunk position memory	•
Roof rack	•
Remote start function	•

Skylight/Glass

Sunroof Type	• Openable panoramic sunroof
---------------------	------------------------------

Skylight/Glass (continued)

Front/rear electric windows	Front •/Rear •
One-touch window lifting function	• Full car
Window anti-pinch function	•
Car makeup mirror	• Main driver's lamp; • co-pilot's lamp
Rear wiper	•
Rain sensor wiper function	• Rainfall-sensing
Rear side privacy glass	•

Interior and exterior color

Exterior Color	White: #FFFFFF; Black: #000000; Brown: #442C1E
Interior Color	Black:#000000

Steering wheel/interior mirror

Steering Wheel Material	• Leather
Steering wheel position adjustment	• Manual up and down front and rear adjustment
Multi-function steering wheel	•
Heated Steering Wheel	-
Steering wheel memory	-
Trip computer display screen	• Color
Full LCD instrument panel	•
LCD instrument size	• 10.25 inches
Interior rearview mirror function	• Automatic anti-glare

Intelligent configuration

Connected Car Services	•
OTA Updates	-

Driving Control

Automatic parking	•
Hill start assist	•
Engine start-stop technology	•

Driving Hardware

Driving Hardware (continued)

Front/rear parking radar	Front-/Rear •
Driving Assistance Camera System	• Reversing image

In-car charging

Multimedia/charging port	•USB;•AUX
Number of USB/Type-C ports	• 3 in the front row/2 in the back row
Mobile phone wireless charging function	• Front row
Luggage compartment 12V power socket	•

"●" = Standard equipment

"-" = Not available

"○" = Optional equipment.

Note: These are Chinese market vehicles. Warranty coverage is not available outside of China.