

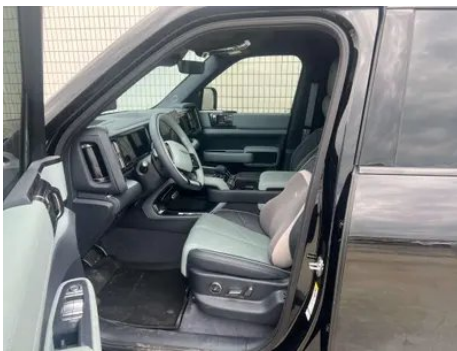
Vehicle Detail Report

Fangchengbao Leopard 5 2025 Laser Dry Kun Zhijia Edition

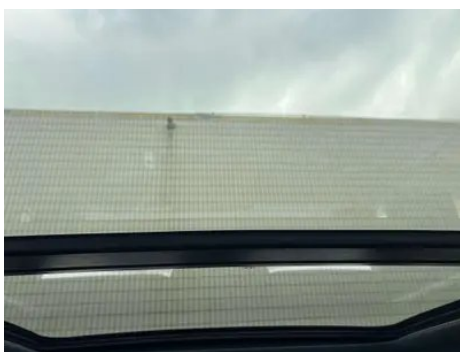
Basic Information

| | |
|--------------------|--------------|
| Brand | Fangchengbao |
| Mileage | 11,000 km |
| Color | Black |
| First Registration | 2025-12-01 |
| Transfer Count | 0 |

Vehicle Images







Vehicle Condition

1. Original metal body panels with factory paint.

Configuration Information

Model Information

| | |
|--------------------|---|
| Model Name | Fangchengbao Leopard 5 2025 Laser Dry Kun Zhijia Edition |
| Launch Date | 2025.02 |

Basic parameters

| | |
|---|--|
| Vehicle Class | Mid-size SUV |
| Energy Type | Plug-in Hybrid Electric Vehicle (PHEV) |
| Maximum Power (kW) | 143 |
| Maximum Torque (N·m) | 273 |
| Transmission | E-CVT continuously variable transmission |
| Body Type | SUV |
| Engine | 1.5T 194 horsepower L4 |
| Dimensions (L×W×H) (mm) | 4890*1970*1920 |
| Official 0-100 km/h Acceleration (s) | 4.8 |
| Top Speed (km/h) | 180 |
| Curb Weight (kg) | 2998 |
| Maximum Gross Weight (kg) | 3373 |
| Fast Charging Time (h) | 0.27 |
| Electric Motor (PS) | 660 |
| Fast Charging Range (%) | 30-80 |
| WLTC Electric Range (km) | 100 |
| WLTP Combined Fuel Consumption (L/100km) | 1.79 |
| CLTC Electric Range (km) | 125 |

Basic parameters (continued)

| | |
|---|------|
| Towing Capacity (kg) | 2500 |
| Lowest state-of-charge fuel consumption (L/100km) WLTC | 8.85 |
| Combined fuel consumption (L/100km) | 4.52 |

engine

| | |
|--------------------------------|------------------|
| Engine Model | BYD476ZQF |
| Displacement (mL) | 1497 |
| Displacement (L) | 1.5 |
| Induction Type | Turbocharging |
| Cylinder Arrangement | L |
| Number of Cylinders | 4 |
| Valves per Cylinder | 4 |
| Valve Train | DOHC |
| Maximum Power (PS) | 194 |
| Max Power Speed (rpm) | - |
| Max Torque Speed (rpm) | - |
| Maximum net power (kW) | 135 |
| Fuel Grade | 92. |
| Fuel Delivery System | Direct injection |
| Cylinder Head Material | Aluminum alloy |
| Cylinder Block Material | Aluminum alloy |
| Engine layout | Longitudinal |

Electric Motor

| | |
|--|------------------------------|
| Motor Type | Permanent magnet/synchronous |
| Total Electric Motor Power (kW) | 485 |
| Total Electric Motor Torque (N·m) | 760 |
| Front Electric Motor Max Power (kW) | 200 |
| Front Electric Motor Max Torque (N·m) | 360 |
| System total power (kW) | 505 |
| System comprehensive torque (N·m) | 760 |

Electric Motor (continued)

| | |
|---|---|
| Number of drive motors | Dual motors |
| Motor Layout | Front-mounted Rear-mounted |
| Battery Type | Lithium iron phosphate battery |
| Battery Capacity (kWh) | 31.8 |
| Total Electric Motor Power (PS) | 660 |
| Rear Electric Motor Max Power (kW) | 285 |
| Rear Electric Motor Max Torque (N·m) | 400 |
| Battery Cell Brand | Fodi |
| Battery Cooling System | Direct cooling |
| Power consumption per 100 kilometers (kWh/100km) | 23.5 |
| Fast charging function | Support |
| Slow charging port location | Rear right side of the car |
| Rear motor model | TZ200XYA |
| Warranty policy for first-time owners of Sandian | Lifetime Warranty/Non-operational (Liability Exemption Terms Subject to Official) |
| Fast charging port location | Rear right side of the car |
| External AC discharge power (kW) | 6 |
| Front motor model | TZ220XYAB |
| Fast Charging Power (kW) | 100 |
| Battery unique technology | Blade Battery |
| NEDC comprehensive range (km) | 1200 |
| System Combined Horsepower (Ps) | 687 |

Screen/System

| | |
|-------------------------------------|--|
| Central control color screen | <ul style="list-style-type: none">• Touch LCD screen |
| Infotainment Screen Size | <ul style="list-style-type: none">• 15.6 inches |
| Bluetooth/In-car Phone | <ul style="list-style-type: none">• |

Screen/System (continued)

| | |
|--|--|
| Smartphone Integration/ Mirroring | <ul style="list-style-type: none">• HUAWEI HiCar support;• Carlink support |
| Voice recognition control system | <ul style="list-style-type: none">• Multimedia system;• Navigation;• Telephone;• Air conditioning;• Sunroof;• Windows |
| Voice wake-up recognition by region | <ul style="list-style-type: none">• Four areas |
| In-vehicle intelligent system | <ul style="list-style-type: none">• DiLink |
| Facial Recognition | <ul style="list-style-type: none">• |
| Vehicle system storage (GB) | <ul style="list-style-type: none">• 256 |
| App Store | <ul style="list-style-type: none">• |
| Central control screen resolution | <ul style="list-style-type: none">• 2.5K |
| Passenger entertainment screen size | <ul style="list-style-type: none">• 12.3 inches |
| Voice assistant wake-up word | Hello Little Square |
| Continuous speech recognition | <ul style="list-style-type: none">• |
| See and Say | <ul style="list-style-type: none">• |
| Vehicle system memory (GB) | <ul style="list-style-type: none">• 12 |

Body

| | |
|---|------------|
| Length (mm) | 4890 |
| Width (mm) | 1970 |
| Height (mm) | 1920 |
| Wheelbase (mm) | 2800 |
| Front Track (mm) | 1660 |
| Rear Track (mm) | 1660 |
| Ground Clearance (Fully Loaded) (mm) | 220 |
| Door Opening Type | swing door |
| Number of Doors | 5 |
| Number of Seats | 5 |
| Fuel Tank Capacity (L) | 83 |
| Trunk volume (L) | - |
| Drag Coefficient (Cd) | - |

Body (continued)

| | |
|---------------------------------------|-----|
| Approach Angle (°) | 35 |
| Departure Angle (°) | 32 |
| Longitudinal passing angle (°) | 20 |
| Maximum wading depth (mm) | 700 |

Gearbox

| | |
|--------------------------|---|
| Abbreviation | E-CVT continuously variable transmission |
| Number of Gears | stepless speed change |
| Transmission Type | Electronic Continuously Variable Transmission (E-CVT) |

Four-wheel drive/off-road

| | |
|---|--|
| Limited Slip Differential/ Diff Lock | Front axle differential lock • Rear axle differential lock |
| Trailer Power Outlet | ○ |
| Tow hook | Manual (4000 yuan) |
| Center differential lock function | • |
| Water sensing system | • |
| Low speed four-wheel drive | • |
| Tank Turn | • |
| Creep Mode | • |

Chassis steering

| | |
|------------------------------|--|
| Drive Type | Front-engine, All-wheel drive (F-AWD) |
| Four-wheel drive | Electric four-wheel drive |
| Front Suspension Type | Double wishbone independent suspension |
| Rear Suspension Type | Double wishbone independent suspension |
| Power Steering Type | Electric power assistance |
| Vehicle structure | Non-load-bearing |

Seat Configuration

| | |
|----------------------|-----------|
| Seat Material | • Leather |
|----------------------|-----------|

Seat Configuration (continued)

| | |
|--|---|
| Main seat adjustment | <ul style="list-style-type: none">• Front and rear adjustment;• Backrest adjustment;• Height adjustment (4-way);• Lumbar support (4-way) |
| Co-seat adjustment method | <ul style="list-style-type: none">• Front and rear adjustment;• Backrest adjustment;• Height adjustment (2-way);• Lumbar support (4-way) |
| Electric adjustment of driver's seat and passenger seat | Main •/Deputy • |
| Front seat functions | <ul style="list-style-type: none">• Heating;• Ventilation;• Massage;• Headrest speakers |
| Electric seat memory function | <ul style="list-style-type: none">• driving position;• co-pilot position |
| Front passenger seat rear adjustable buttons | - |
| Second row seat adjustment | <ul style="list-style-type: none">• Backrest adjustment |
| Rear seat folding | <ul style="list-style-type: none">• Proportional down |
| Front/rear center armrest | Front •/Rear • |
| Rear cup holder | <ul style="list-style-type: none">• |
| Second row seat functions | <ul style="list-style-type: none">• Heating;• Ventilation |

Active safety

| | |
|---|---|
| Anti-lock Braking System (ABS) | <ul style="list-style-type: none">• |
| Electronic Brakeforce Distribution (EBD/CBC) | <ul style="list-style-type: none">• |
| Brake Assist System (EBA/BAS/BA) | <ul style="list-style-type: none">• |
| Traction Control System (ASR/TCS/TRC) | <ul style="list-style-type: none">• |
| Electronic Stability Control (ESC/ESP/DSC) | <ul style="list-style-type: none">• |
| Tire Pressure Monitoring System (TPMS) | <ul style="list-style-type: none">• Tire pressure display |
| Seat Belt Reminder | <ul style="list-style-type: none">• |
| ISOFIX Child Seat Anchors | <ul style="list-style-type: none">• |
| Lane Departure Warning System (LDWS) | <ul style="list-style-type: none">• |

Active safety (continued)

| | |
|---|---|
| Autonomous Emergency Braking (AEB) | • |
| Driver Fatigue Detection | • |
| Forward Collision Warning (FCW) | • |
| Rear Collision Warning | • |
| Low Speed Alert | • |
| Emergency Call System (eCall) | • |
| Built-in Dashcam | • |
| Door Opening Warning (DOW) | • |
| Roll-Over Protection System | • |
| Sentry Mode | • |

Air conditioning/refrigerator

| | |
|--|------------------------------|
| Air conditioning temperature control method | • Automatic air conditioning |
| Rear Independent Climate Control | - |
| Rear seat air vents | • |
| Temperature zone control | • |
| Car air purifier | • |
| In-cabin PM2.5 Filter | • |
| In-car Refrigerator | • |
| Negative ion generator | • |
| Car fragrance device | • |
| Heat pump air conditioner | • |
| Air quality monitoring | • |

Passive safety

| | |
|--|------------------------|
| Driver/passenger airbag | Main •/Deputy • |
| Front/rear side airbags | Front •/Rear • |
| Front/rear head airbags (curtain airbags) | Front •/Rear • |
| Knee airbag | • Driver's knee airbag |

Wheel brake

| | |
|-------------------------|------------------|
| Front Brake Type | Ventilation disc |
|-------------------------|------------------|

Wheel brake (continued)

| | |
|-----------------------------|--------------------|
| Rear Brake Type | Ventilation disc |
| Parking brake type | Electronic Parking |
| Front Tire Size | 265/65 R18 |
| Rear Tire Size | 265/65 R18 |
| Spare Tire Size | Full size |
| Spare tire placement | Backpack-style |

Audio/Interior Lighting

| | |
|----------------------------------|------------------|
| Speaker Brand Name | •DEVIALET Devare |
| Number of speakers | • 18 speakers |
| Interior ambient lighting | • Multicolor |

Driving functions

| | |
|---|------------------------------|
| Navigation traffic information display | • |
| Lane assist | • |
| Lane Keeping Assist System | • |
| Cruise control system | • Full speed adaptive cruise |
| Satellite navigation system | • |
| Driving assistance level | •L2 |
| Rear Cross Traffic Alert | • |
| Lane centering | • |
| Road traffic sign recognition | • |
| Map Brand | Huawei Petal |
| Remote Parking | • |
| Tracking reverse | • |
| Driver assistance systems | • Huawei Gankun Zhijia ADS |
| Hands-off detection | • |
| Memory Parking | ○ |
| Traffic light recognition | • |
| Start reminder | • |
| Parking Assist | • |
| Lane Change Assist | • |
| Automatic Ramp Entry/Exit Assist | • |

Driving functions (continued)

| | |
|-------------------------|---|
| Highway sections | ○ Urban sections; • Expressway sections |
|-------------------------|---|

Exterior lighting

| | |
|-------------------------------------|-------|
| Low beam light source | • LED |
| High beam light source | • LED |
| LED daytime running lights | • |
| Adaptive high and low beam | • |
| Automatic headlights | • |
| Front fog lights | • LED |
| Height-adjustable headlights | • |
| Headlight Delay Off | • |
| Turn signal lamp | • |

Exterior mirrors

| | |
|---------------------------------|---|
| Exterior mirror function | • Electric adjustment; • Electric folding; • Rearview mirror memory; • Rearview mirror heating; • Automatically turn down when reversing; • Automatically fold when locking the car |
|---------------------------------|---|

Appearance/anti-theft

| | |
|--|---|
| Rim material | • Aluminum alloy |
| Electronic engine immobilizer | • |
| Central locking system in the car | • |
| Key Type | • Remote key; • Bluetooth key; • NFC/RFID key |
| Keyless start system | • |
| Keyless entry function | • Front row |
| Roof rack | • |
| Remote start function | • |
| Battery preheating | • |
| Electric door closing | • Tailgate |
| Discharge to the outside | • |
| Side pedals | • Fixed |

Skylight/Glass

Skylight/Glass (continued)

| | |
|---|---|
| Sunroof Type | <ul style="list-style-type: none">• Openable panoramic sunroof |
| Front/rear electric windows | Front •/Rear • |
| One-touch window lifting function | <ul style="list-style-type: none">• Full vehicle |
| Window anti-pinch function | <ul style="list-style-type: none">• |
| Car makeup mirror | <ul style="list-style-type: none">• Main driver's lamp; • co-pilot's lamp |
| Rear wiper | <ul style="list-style-type: none">• |
| Rain sensor wiper function | <ul style="list-style-type: none">• Rainfall-sensing |
| Rear side privacy glass | <ul style="list-style-type: none">• |
| Side window multi-layer soundproof glass | <ul style="list-style-type: none">• Front row |

Interior and exterior color

| | |
|-----------------------|--|
| Exterior Color | Night Shadow Black #000000 Peak Grey #7D868D Dolomites Green #C8D2C9 Vatna Icefield Blue #7A92AC |
| Interior Color | Eclipse Blue Black #8B9FB8 #000000 Tammi #C4BCA8 Shallow Beach Green Black #ACBAC3 #000000 |

Steering wheel/interior mirror

| | |
|---|--|
| Steering Wheel Material | <ul style="list-style-type: none">• Cortex |
| Steering wheel position adjustment | <ul style="list-style-type: none">• Manual up and down front and rear adjustment |
| Multi-function steering wheel | <ul style="list-style-type: none">• |
| Heated Steering Wheel | <ul style="list-style-type: none">• |
| Steering wheel memory | - |
| Trip computer display screen | <ul style="list-style-type: none">• Color |
| Full LCD instrument panel | <ul style="list-style-type: none">• |
| LCD instrument size | <ul style="list-style-type: none">• 12.3 inches |
| Interior rearview mirror function | <ul style="list-style-type: none">• Automatic anti-glare |
| Gear shifting | <ul style="list-style-type: none">• Electronic gear shift |
| HUD Head Up Digital Display | <ul style="list-style-type: none">• |

Steering wheel/interior mirror (continued)

| | |
|-------------------------|---|
| ETC Device | <ul style="list-style-type: none">• |
| HUD head up size | <ul style="list-style-type: none">• 50" |

Intelligent configuration

| | |
|-----------------------------------|--|
| Connected Car Services | <ul style="list-style-type: none">• |
| OTA Updates | <ul style="list-style-type: none">• |
| 4G/5G Network | <ul style="list-style-type: none">•5G |
| Mobile APP remote function | <ul style="list-style-type: none">• Door control;• Window control;• Vehicle start;• Charging management;• Climate control;• Vehicle status check/diagnostics;• Vehicle location / find my car;• Owner services (charging stations, gas stations, parking, etc.);• Service/repair appointment |
| Wi-Fi hotspots | <ul style="list-style-type: none">• |

Driving Control

| | |
|-------------------------------|--|
| Driving mode switch | <ul style="list-style-type: none">• Sport;• Economical;• Standard/Comfort;• Off-Road;• Snow;• Customize/Personalize |
| Automatic parking | <ul style="list-style-type: none">• |
| Steep slope descent | <ul style="list-style-type: none">• |
| Hill start assist | <ul style="list-style-type: none">• |
| Energy recovery system | <ul style="list-style-type: none">• |
| Towing mode | <ul style="list-style-type: none">• |

Driving Hardware

| | |
|---|--|
| Front/rear parking radar | Front •/Rear • |
| Driving Assistance Camera System | <ul style="list-style-type: none">• 360-degree panoramic image |
| Front perception camera | <ul style="list-style-type: none">• Binocular |
| Number of cameras | <ul style="list-style-type: none">• 11 |
| Number of ultrasonic radars | <ul style="list-style-type: none">• 12 |
| Transparent chassis/540-degree imaging | <ul style="list-style-type: none">• |
| Millimeter wave radar quantity | <ul style="list-style-type: none">• 3 |
| LiDAR Brand | <ul style="list-style-type: none">• HUAWEI Huawei |
| Number of LiDARs | <ul style="list-style-type: none">• 1 |
| Laser radar line number | <ul style="list-style-type: none">• 192 line |

Driving Hardware (continued)

| | |
|-------------------------------------|-----|
| Number of cameras in the car | • 1 |
|-------------------------------------|-----|

In-car charging

| | |
|--|--|
| Multimedia/charging port | •USB;•Type-C |
| Number of USB/Type-C ports | • 3 in the front row/2 in the back row |
| Mobile phone wireless charging function | • Front row |
| 220V/230V power supply | • |
| Luggage compartment 12V power socket | • |
| USB/Type-C maximum charging power | •60W |
| Mobile phone wireless charging power | •50W |

Optional Package

| | |
|-------------------------|---|
| Optional Package | Trailer hook and 2.5t Trailer qualification Front axle differential lock (8000 yuan Contains 2.5T Trailer qualification (Tow hook included Trailer power inlet) Front axle differential lock) |
|-------------------------|---|

"●" = Standard equipment

"-" = Not available

"○" = Optional equipment.

Note: These are Chinese market vehicles. Warranty coverage is not available outside of China.