

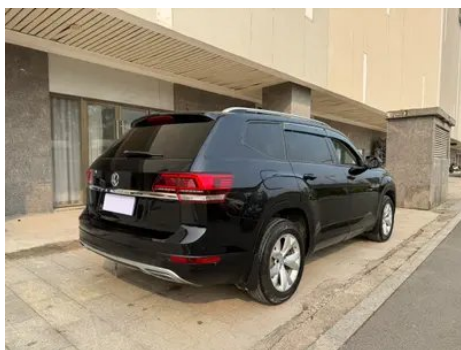
Vehicle Detail Report

Volkswagen Teramont 2020 Restyling 380TSI
Four-wheel drive comfort version

Basic Information

Brand	Volkswagen
Mileage	105,000 km
Color	Black
First Registration	2020-09-01
Transfer Count	0

Vehicle Images





Vehicle Condition

1. Deformation. 2. Right rear quarter panel, Body panel repair.

Configuration Information

Model Information

Model Name	Volkswagen Teramont 2020 Restyling 380TSI Four-wheel drive comfort version
Launch Date	2020.08

Basic parameters

Vehicle Class	Mid-size and large SUVs
Energy Type	Gasoline
Maximum Power (kW)	162

Basic parameters (continued)

Maximum Torque (N·m)	350
Transmission	7-speed wet dual-clutch
Body Type	SUV
Engine	2.0T 220 horsepower L4
Dimensions (L×W×H) (mm)	5039*1989*1773
Official 0-100 km/h Acceleration (s)	8.4
Top Speed (km/h)	200
Curb Weight (kg)	2085
Maximum Gross Weight (kg)	-
NEDC Combined Fuel Consumption (L/100km)	8.6

engine

Engine Model	EA888-DKX
Displacement (mL)	1984
Displacement (L)	2.0
Induction Type	Turbocharging
Cylinder Arrangement	L
Number of Cylinders	4
Valves per Cylinder	4
Valve Train	DOHC
Maximum Power (PS)	220
Max Power Speed (rpm)	4500-6200
Max Torque Speed (rpm)	1500-4400
Maximum net power (kW)	162
Fuel Grade	95.
Fuel Delivery System	Direct injection
Cylinder Head Material	Aluminum alloy
Cylinder Block Material	Cast iron
Engine layout	Horizontal

Screen/System

Central control color screen	<ul style="list-style-type: none">• Touch LCD screen
Infotainment Screen Size	<ul style="list-style-type: none">• 8 inches

Screen/System (continued)

Bluetooth/In-car Phone	<ul style="list-style-type: none">•
Smartphone Integration/Mirroring	<ul style="list-style-type: none">• Apple CarPlay support;• Baidu CarLife support;• OEM smartphone integration/mirroring
Voice recognition control system	<ul style="list-style-type: none">• Multimedia system;• Navigation;• Telephone

Body

Length (mm)	5039
Width (mm)	1989
Height (mm)	1773
Wheelbase (mm)	2980
Front Track (mm)	-
Rear Track (mm)	-
Door Opening Type	-
Number of Doors	5
Number of Seats	7
Fuel Tank Capacity (L)	70
Trunk volume (L)	286-2415
Drag Coefficient (Cd)	-

Gearbox

Abbreviation	7-speed wet dual-clutch
Number of Gears	7
Transmission Type	Wet Dual-Clutch Transmission (DCT)

Chassis steering

Drive Type	Front-engine, All-wheel drive (F-AWD)
Four-wheel drive	Timely four-wheel drive
Central differential structure	Multi-plate clutch
Front Suspension Type	MacPherson independent suspension
Rear Suspension Type	Multi-link independent suspension
Power Steering Type	Electric power assistance
Vehicle structure	bearing type

Seat Configuration

Seat Material	<ul style="list-style-type: none">• Leather/fabric mix-and-match
----------------------	--------------------------------------------------------------------------------

Seat Configuration (continued)

Main seat adjustment	<ul style="list-style-type: none">• Front and rear adjustment;• Backrest adjustment;• Height adjustment (4-way);• Lumbar support (4-way)
Co-seat adjustment method	<ul style="list-style-type: none">• Front and rear adjustment;• Backrest adjustment;• Height adjustment (2-way);• Lumbar support (2-way)
Electric adjustment of driver's seat and passenger seat	Main/Deputy-
Front passenger seat rear adjustable buttons	-
Second row seat adjustment	<ul style="list-style-type: none">• Front and rear adjustment;• Backrest adjustment
Rear seat folding	<ul style="list-style-type: none">• Proportional down
Front/rear center armrest	Front •/Rear •
Rear cup holder	<ul style="list-style-type: none">•
Seat Layout	<ul style="list-style-type: none">•2-3-2

Active safety

Anti-lock Braking System (ABS)	<ul style="list-style-type: none">•
Electronic Brakeforce Distribution (EBD/CBC)	<ul style="list-style-type: none">•
Brake Assist System (EBA/BAS/BA)	<ul style="list-style-type: none">•
Traction Control System (ASR/TCS/TRC)	<ul style="list-style-type: none">•
Electronic Stability Control (ESC/ESP/DSC)	<ul style="list-style-type: none">•
Tire Pressure Monitoring System (TPMS)	<ul style="list-style-type: none">• Tire pressure display
Seat Belt Reminder	<ul style="list-style-type: none">• Front row
ISOFIX Child Seat Anchors	<ul style="list-style-type: none">•
Lane Departure Warning System (LDWS)	-
Autonomous Emergency Braking (AEB)	-
Driver Fatigue Detection	-

Air conditioning/refrigerator

Air conditioning/refrigerator (continued)

Air conditioning temperature control method	• Automatic air conditioning
Rear Independent Climate Control	•
Rear seat air vents	•
Temperature zone control	•
Car air purifier	-
In-cabin PM2.5 Filter	•

Passive safety

Driver/passenger airbag	Main •/Deputy •
Front/rear side airbags	Front •/Rear-
Front/rear head airbags (curtain airbags)	Front •/Rear •
Knee airbag	• Driver's knee airbag

Wheel brake

Front Brake Type	Ventilation disc
Rear Brake Type	Ventilation disc
Parking brake type	Electronic Parking
Front Tire Size	245/60 R18
Rear Tire Size	245/60 R18
Spare Tire Size	Not full-size

Audio/Interior Lighting

Number of speakers	• 8 speakers
Interior ambient lighting	• Monochrome

Driving functions

Navigation traffic information display	•
Lane assist	-
Lane Keeping Assist System	-
Cruise control system	• Cruise control
Satellite navigation system	•
Parking Assist	-

Exterior lighting

Low beam light source	•LED
------------------------------	------

Exterior lighting (continued)

High beam light source	•LED
LED daytime running lights	•
Adaptive high and low beam	-
Automatic headlights	•
Front fog lights	•LED
Height-adjustable headlights	•
Headlight Delay Off	•

Exterior mirrors

Exterior mirror function	• Electric adjustment; • Mirror heating
---------------------------------	-----------------------------------------

Appearance/anti-theft

Rim material	• Aluminum alloy
Electric trunk	•
Electronic engine immobilizer	•
Central locking system in the car	•
Key Type	• Remote key
Keyless start system	•
Keyless entry function	• Full vehicle
Electric trunk position memory	•
Roof rack	•

Skylight/Glass

Front/rear electric windows	Front •/Rear •
One-touch window lifting function	• Full vehicle
Window anti-pinch function	•
Car makeup mirror	• Main driver's lamp; • co-pilot's lamp
Rear wiper	•
Rain sensor wiper function	• Rainfall-sensing
Rear side privacy glass	•

Interior and exterior color

Exterior Color	Black Black:#000000; Icelandic silver:#9CABB2; Aurora white:#FFFFFF; Velvet Brown:#472C0F
Interior Color	Titan Black #000000

Steering wheel/interior mirror

Steering Wheel Material	• Leather
Steering wheel position adjustment	• Manual up and down front and rear adjustment
Multi-function steering wheel	•
Heated Steering Wheel	-
Steering wheel memory	-
Trip computer display screen	• Color
Full LCD instrument panel	•
LCD instrument size	• 10.2 inches
Interior rearview mirror function	• Automatic anti-glare
Gear shifting	• Mechanical gear shift

Intelligent configuration

Connected Car Services	-
OTA Updates	-

Driving Control

Driving mode switch	• Sport; • Economy; • Standard/Comfort; • Off-road; • Snow
Automatic parking	•
Steep slope descent	•
Hill start assist	•
Engine start-stop technology	•

Driving Hardware

Front/rear parking radar	Front-/Rear •
Driving Assistance Camera System	• Reversing image
Number of cameras	• 1

In-car charging

Multimedia/charging port	•USB
---------------------------------	------

In-car charging (continued)

Number of USB/Type-C ports	• 3 in the front row/2 in the back row
Luggage compartment 12V power socket	•

"●" = Standard equipment

"_" = Not available

"○" = Optional equipment.

Note: These are Chinese market vehicles. Warranty coverage is not available outside of China.