

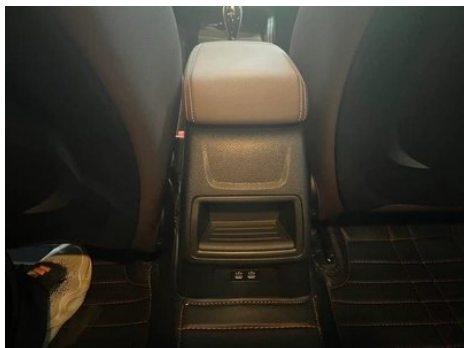
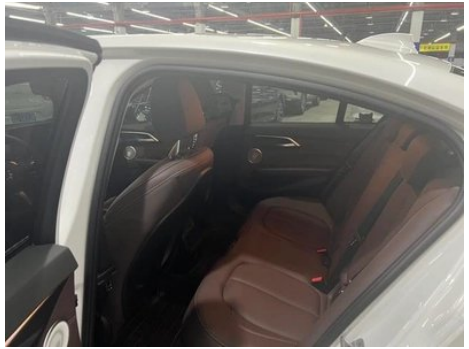
Vehicle Detail Report

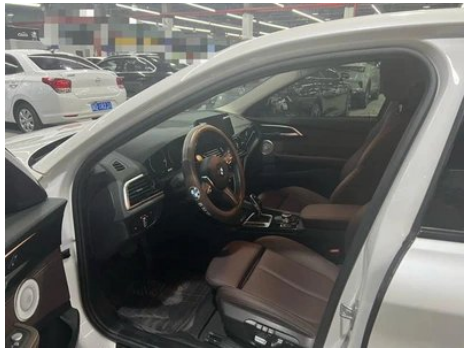
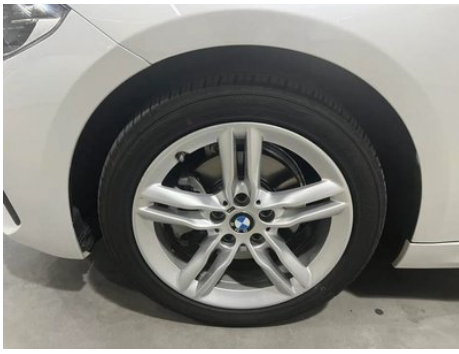
BMW 1 Series 2023 120i M Sports Obsidian Night Edition

Basic Information

Brand	BMW
Mileage	26,000 km
Color	White
First Registration	2023-05-01
Transfer Count	0

Vehicle Images







Vehicle Condition

1. Original metal body panels with factory paint.

Configuration Information

Model Information

Model Name	BMW 1 Series 2023 120i M Sports Obsidian Night Edition
Launch Date	2022.12

Basic parameters

Vehicle Class	compact car
Energy Type	Gasoline
Maximum Power (kW)	100
Maximum Torque (N·m)	220
Transmission	7-speed wet dual-clutch
Body Type	Sedan
Engine	1.5L 136 hp L3
Dimensions (L×W×H) (mm)	4462*1803*1446
Official 0-100 km/h Acceleration (s)	9.4
Top Speed (km/h)	212
Curb Weight (kg)	1370
Maximum Gross Weight (kg)	1845
WLTP Combined Fuel Consumption (L/100km)	6.5

engine

Engine Model	B38A15G
Displacement (mL)	1499
Displacement (L)	1.5
Induction Type	Turbocharging
Cylinder Arrangement	L

engine (continued)

Number of Cylinders	3
Valves per Cylinder	4
Valve Train	DOHC
Maximum Power (PS)	136
Max Power Speed (rpm)	4500-6500
Max Torque Speed (rpm)	1500-4100
Maximum net power (kW)	100
Fuel Grade	95.
Fuel Delivery System	Direct injection
Cylinder Head Material	Aluminum alloy
Cylinder Block Material	Aluminum alloy
Engine layout	Horizontal

Screen/System

Central control color screen	<ul style="list-style-type: none">• Touch LCD screen
Infotainment Screen Size	<ul style="list-style-type: none">• 10.25 inches
Bluetooth/In-car Phone	<ul style="list-style-type: none">•
Smartphone Integration/Mirroring	<ul style="list-style-type: none">• Apple CarPlay support;• Baidu CarLife support
Voice recognition control system	<ul style="list-style-type: none">• Multimedia system;• Telephone

Body

Length (mm)	4462
Width (mm)	1803
Height (mm)	1446
Wheelbase (mm)	2670
Front Track (mm)	1559
Rear Track (mm)	1561
Door Opening Type	swing door
Number of Doors	4
Number of Seats	5
Fuel Tank Capacity (L)	50
Trunk volume (L)	-
Drag Coefficient (Cd)	-
Approach Angle (°)	14

Body (continued)

Departure Angle (°)	19
----------------------------	----

Gearbox

Abbreviation	7-speed wet dual-clutch
Number of Gears	7
Transmission Type	Wet Dual-Clutch Transmission (DCT)

Chassis steering

Drive Type	Front-engine, Front-wheel drive (FF)
Front Suspension Type	MacPherson independent suspension
Rear Suspension Type	Multi-link independent suspension
Power Steering Type	Electric power assistance
Vehicle structure	bearing type

Seat Configuration

Seat Material	<ul style="list-style-type: none">• Imitation leather
Main seat adjustment	<ul style="list-style-type: none">• Front and rear adjustment;• Backrest adjustment;• Height adjustment (4-way);• Leg support adjustment
Co-seat adjustment method	<ul style="list-style-type: none">• Front and rear adjustment;• Backrest adjustment;• Height adjustment (2-way)
Electric adjustment of driver's seat and passenger seat	Main/Deputy-
Front seat functions	○ Heating (USD 397)
Electric seat memory function	<ul style="list-style-type: none">• Driving position
Front passenger seat rear adjustable buttons	-
Front/rear center armrest	Front •/Rear-
Rear cup holder	-
Sports style seats	<ul style="list-style-type: none">•

Active safety

Anti-lock Braking System (ABS)	<ul style="list-style-type: none">•
Electronic Brakeforce Distribution (EBD/CBC)	<ul style="list-style-type: none">•
Brake Assist System (EBA/BAS/BA)	<ul style="list-style-type: none">•

Active safety (continued)

Traction Control System (ASR/TCS/TRC)	•
Electronic Stability Control (ESC/ESP/DSC)	•
Tire Pressure Monitoring System (TPMS)	• Tire pressure display
Seat Belt Reminder	• Front row
ISOFIX Child Seat Anchors	•
Lane Departure Warning System (LDWS)	-
Autonomous Emergency Braking (AEB)	-
Driver Fatigue Detection	-
Emergency Call System (eCall)	•

Air conditioning/refrigerator

Air conditioning temperature control method	• Manual air conditioning; ○ Automatic air conditioning (USD 838)
Rear Independent Climate Control	-
Rear seat air vents	○
Temperature zone control	○
Car air purifier	-
In-cabin PM2.5 Filter	-

Passive safety

Driver/passenger airbag	Main •/Deputy •
Front/rear side airbags	Front •/Rear-
Front/rear head airbags (curtain airbags)	Front •/Rear •
Run-flat tires	•

Wheel brake

Front Brake Type	Ventilation disc
Rear Brake Type	Disc
Parking brake type	Electronic Parking
Front Tire Size	225/45 R17
Rear Tire Size	225/45 R17
Spare Tire Size	None

Audio/Interior Lighting

Number of speakers	• 6 speakers
Interior ambient lighting	○6 Color (1900 yuan)

Driving functions

Navigation traffic information display	-
Lane assist	-
Lane Keeping Assist System	-
Cruise control system	○Cruise Control (USD 338)
Satellite navigation system	-
Parking Assist	-

Exterior lighting

Low beam light source	•LED
High beam light source	•LED
LED daytime running lights	•
Adaptive high and low beam	-
Automatic headlights	•
Height-adjustable headlights	•
Headlight Delay Off	•

Exterior mirrors

Exterior mirror function	• Electric adjustment; ○ Electric folding; ○ Mirror memory function; ○ Heated mirrors; ○ Automatic downfolding on reverse
---------------------------------	---

Appearance/anti-theft

Rim material	• Aluminum alloy
Electric trunk	-
Electronic engine immobilizer	•
Central locking system in the car	•
Key Type	• Remote key
Keyless start system	•
Keyless entry function	○ Front row (USD 441)
Appearance Kit	• Sports style

Skylight/Glass

Sunroof Type	• Openable panoramic sunroof
Front/rear electric windows	Front •/Rear •
One-touch window lifting function	• Full vehicle
Window anti-pinch function	•
Car makeup mirror	• Main driving position; • First officer
Rear wiper	-
Rain sensor wiper function	• Rainfall-sensing

Interior and exterior color

Exterior Color	Ore White #E7E7E7 cashmi silver #C6C1B4 Quantum Blue #273F7C Melbourne Red #610303 sky blue #0078B5
Interior Color	Black/Mocha:#000000/#423534; Black/Lava Red:#000000/#AF3A21

Steering wheel/interior mirror

Steering Wheel Material	• Leather
Steering wheel position adjustment	• Manual up and down front and rear adjustment
Multi-function steering wheel	•
Heated Steering Wheel	-
Steering wheel memory	-
Trip computer display screen	• Color
Full LCD instrument panel	-
Interior rearview mirror function	• Manual anti-glare
Gear shifting	• Electronic gear shift
ETC Device	○(USD 147)

Intelligent configuration

Connected Car Services	-
OTA Updates	-

Driving Control

Driving mode switch	• Sport; • Economy; • Standard/Comfort
----------------------------	--

Driving Control (continued)

Automatic parking	-
Hill start assist	•
Engine start-stop technology	•

Driving Hardware

Front/rear parking radar	Front ○/Rear • Front Radar (USD 485)
Driving Assistance Camera System	• Reversing image

In-car charging

Multimedia/charging port	•USB;•Type-C
Number of USB/Type-C ports	• 2 in the front row/2 in the back row

"●" = Standard equipment

"-" = Not available

"○" = Optional equipment.

Note: These are Chinese market vehicles. Warranty coverage is not available outside of China.