

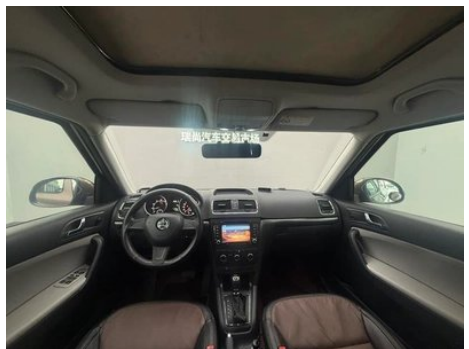
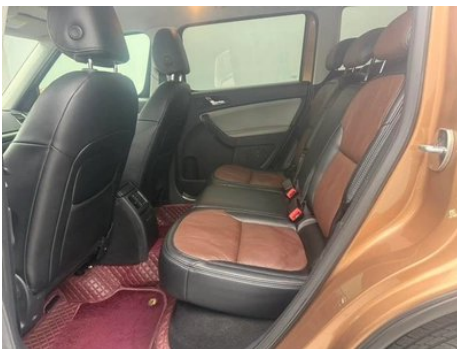
Vehicle Detail Report

Yeti 2016 1.4TSI DSG Line Creation Edition

Basic Information

Brand	Skoda
Mileage	140,000 km
Color	Coffee color
First Registration	2016-01-01
Transfer Count	0

Vehicle Images





Vehicle Condition

1. Rust (Not caused by an accident). 2. Left front door, Paint spray repair. 3. Left rear door, Paint spray repair. 4. Left front fender, Paint spray repair. 5. Right front fender, Sheet metal repair. 6. Left rear fender, Paint spray repair.

Configuration Information

Model Information

Model Name	Yeti 2016 1.4TSI DSG Line Creation Edition
Launch Date	2015.08

Basic parameters

Vehicle Class	Small SUV
Energy Type	Gasoline
Maximum Power (kW)	110
Maximum Torque (N·m)	250
Transmission	7-speed dry dual-clutch
Body Type	SUV
Engine	1.4L 150 hp L4
Dimensions (L×W×H) (mm)	4459*1793*1682

Basic parameters (continued)

Official 0-100 km/h Acceleration (s)	9.5
Top Speed (km/h)	190
Curb Weight (kg)	1465
Maximum Gross Weight (kg)	-
NEDC Combined Fuel Consumption (L/100km)	6.3

engine

Engine Model	-
Displacement (mL)	1395
Displacement (L)	1.4
Induction Type	Turbocharging
Cylinder Arrangement	L
Number of Cylinders	4
Valves per Cylinder	4
Valve Train	DOHC
Maximum Power (PS)	150
Max Power Speed (rpm)	5000
Max Torque Speed (rpm)	1750-3000
Maximum net power (kW)	-
Fuel Grade	Number 95
Fuel Delivery System	Direct injection
Cylinder Head Material	Aluminum alloy
Cylinder Block Material	Aluminum alloy

Screen/System

Bluetooth/In-car Phone	<ul style="list-style-type: none">•
In-car CD/DVD Player	<ul style="list-style-type: none">• Single disc CD

Body

Length (mm)	4459
Width (mm)	1793
Height (mm)	1682
Wheelbase (mm)	2638
Front Track (mm)	-
Rear Track (mm)	-

Body (continued)

Door Opening Type	-
Number of Doors	5
Number of Seats	5
Fuel Tank Capacity (L)	55
Trunk volume (L)	430-1630
Drag Coefficient (Cd)	-

Gearbox

Abbreviation	7-speed dry dual-clutch
Number of Gears	7
Transmission Type	Dry Dual-Clutch Transmission (DCT)

Chassis steering

Drive Type	Front-engine, Front-wheel drive (FF)
Front Suspension Type	MacPherson strut independent suspension
Rear Suspension Type	Multi-link independent suspension
Power Steering Type	Electric power assist
Vehicle structure	bearing type

Seat Configuration

Seat Material	• Fabric, ○ Leather
Main seat adjustment	• Front and rear adjustment; • Backrest adjustment; • Height adjustment (2 directions), • High and low adjustment (Four directions)
Co-seat adjustment method	• Front and rear adjustment; • Backrest adjustment
Electric adjustment of driver's seat and passenger seat	-
Front passenger seat rear adjustable buttons	-
Second row seat adjustment	• Front and rear adjustment; • Backrest adjustment
Rear seat folding	• Proportional down
Front/rear center armrest	Front •/Rear
Rear cup holder	-

Active safety

Anti-lock Braking System (ABS)	•
---------------------------------------	---

Active safety (continued)

Electronic Brakeforce Distribution (EBD/CBC)	•
Brake Assist System (EBA/BAS/BA)	•
Traction Control System (ASR/TCS/TRC)	•
Electronic Stability Control (ESC/ESP/DSC)	•
Tire Pressure Monitoring System (TPMS)	•
Seat Belt Reminder	•
ISOFIX Child Seat Anchors	•
Lane Departure Warning System (LDWS)	-
Autonomous Emergency Braking (AEB)	-
Driver Fatigue Detection	-

Air conditioning/refrigerator

Air conditioning temperature control method	• Automatic air conditioning
Rear Independent Climate Control	-
Rear seat air vents	•
Temperature zone control	•
Car air purifier	-
In-cabin PM2.5 Filter	-

Passive safety

Driver/passenger airbag	Main •/Sub •
Front/rear side airbags	Front ○/Rear
Front/rear head airbags (curtain airbags)	-

Wheel brake

Front Brake Type	Ventilation, Disc-type
Rear Brake Type	Disc-type
Parking brake type	Handbrake
Front Tire Size	225/50 R17
Rear Tire Size	225/50 R17

Wheel brake (continued)

Spare Tire Size	Non-full size
------------------------	---------------

Audio/Interior Lighting

Number of speakers	• 8-9 speakers
---------------------------	----------------

Driving functions

Navigation traffic information display	-
Lane assist	-
Lane Keeping Assist System	-
Satellite navigation system	-
Parking Assist	-

Exterior lighting

Low beam light source	• Halogen
High beam light source	• Halogen
LED daytime running lights	-
Adaptive high and low beam	-
Automatic headlights	-
Front fog lights	•
Height-adjustable headlights	•
Headlight Delay Off	-
Turn signal lamp	•

Exterior mirrors

Exterior mirror function	• Electric adjustment, • Mirror heating
---------------------------------	-----------------------------------------

Appearance/anti-theft

Rim material	• Aluminum alloy
Electric trunk	-
Electronic engine immobilizer	•
Central locking system in the car	•
Key Type	• Remote key
Keyless start system	○
Keyless entry function	○

Appearance/anti-theft (continued)

Roof rack	•
-----------	---

Skylight/Glass

Sunroof Type	• Panoramic sunroof
Front/rear electric windows	Front •/Back •
Window anti-pinch function	•
Car makeup mirror	•
Rear wiper	•

Interior and exterior color

Exterior Color	Polar white:#FFFFFF; Gobi brown:#A26247; Junye brown:#333300; Flying sand gold:#D2C8B4
Interior Color	Black, Beige:#000000/#B8B8B8, Black, #000000

Steering wheel/interior mirror

Steering Wheel Material	• Cortex
Steering wheel position adjustment	• Manual up and down front and rear adjustment
Multi-function steering wheel	•
Heated Steering Wheel	-
Steering wheel memory	-
Trip computer display screen	•
Full LCD instrument panel	-
Interior rearview mirror function	• Manual anti-glare

Intelligent configuration

Connected Car Services	-
OTA Updates	-

Driving Control

Automatic parking	-
Hill start assist	•

Driving Hardware

Front/rear parking radar	Front/Back •
--------------------------	--------------

In-car charging

Multimedia/charging port	•USB;•AUX;•SD
--------------------------	---------------

"●" = Standard equipment

"□" = Not available

"○" = Optional equipment.

Note: These are Chinese market vehicles. Warranty coverage is not available outside of China.