

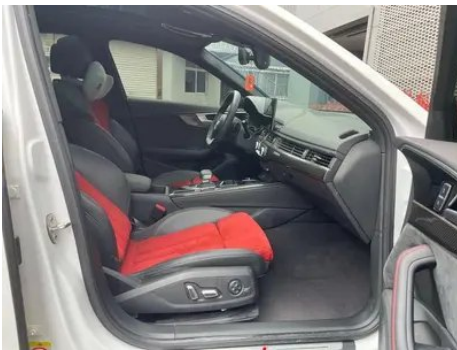
Vehicle Detail Report

Audi A4L 2024 45 TFSI quattro Choose dynamic type

Basic Information

Brand	Audi
Mileage	27,000 km
Color	White
First Registration	2024-07-01
Transfer Count	0

Vehicle Images





Vehicle Condition

1. Right rocker panel, Outer-side deformation.

Configuration Information

Model Information

Model Name	Audi A4L 2024 Model 45 TFSI quattro Prestige Dynamic Edition
Launch Date	2023.10

Basic parameters

Vehicle Class	Mid-size car
Energy Type	Gasoline
Maximum Power (kW)	180
Maximum Torque (N·m)	370
Transmission	7-speed wet dual-clutch
Body Type	Sedan
Engine	2.0T 245 horsepower L4
Dimensions (L×W×H) (mm)	4858*1847*1411

Basic parameters (continued)

Official 0-100 km/h Acceleration (s)	6
Top Speed (km/h)	240
Curb Weight (kg)	1725
Maximum Gross Weight (kg)	2160
WLTP Combined Fuel Consumption (L/100km)	7.55

engine

Engine Model	DTK
Displacement (mL)	1984
Displacement (L)	2.0
Induction Type	Turbocharging
Cylinder Arrangement	L
Number of Cylinders	4
Valves per Cylinder	4
Valve Train	DOHC
Maximum Power (PS)	245
Max Power Speed (rpm)	-
Max Torque Speed (rpm)	-
Maximum net power (kW)	180
Fuel Grade	95.
Fuel Delivery System	Direct injection
Cylinder Head Material	Aluminum alloy
Cylinder Block Material	Cast iron
Engine layout	Longitudinal

Screen/System

Central control color screen	<ul style="list-style-type: none">• Touch LCD screen
Infotainment Screen Size	<ul style="list-style-type: none">• 10.1 inches
Bluetooth/In-car Phone	<ul style="list-style-type: none">•
Smartphone Integration/Mirroring	<ul style="list-style-type: none">• Support CarPlay;• Support Android Auto
Voice recognition control system	<ul style="list-style-type: none">• Multimedia system;• Navigation;• Telephone
In-vehicle intelligent system	<ul style="list-style-type: none">• Audi Connect

Screen/System (continued)

Touch screen vibration feedback	•
--	---

Body

Length (mm)	4858
Width (mm)	1847
Height (mm)	1411
Wheelbase (mm)	2908
Front Track (mm)	1566
Rear Track (mm)	1549
Ground Clearance (Fully Loaded) (mm)	97
Door Opening Type	swing door
Number of Doors	4
Number of Seats	5
Fuel Tank Capacity (L)	58
Trunk volume (L)	424
Drag Coefficient (Cd)	-
Approach Angle (°)	14
Departure Angle (°)	15
Minimum Turning Radius (m)	5.9

Gearbox

Abbreviation	7-speed wet dual-clutch
Number of Gears	7
Transmission Type	Wet Dual-Clutch Transmission (DCT)

Chassis steering

Drive Type	Front-engine, All-wheel drive (F-AWD)
Four-wheel drive	Timely four-wheel drive
Central differential structure	Multi-plate clutch
Front Suspension Type	Five-link independent suspension
Rear Suspension Type	Five-link independent suspension
Power Steering Type	Electric power assistance
Vehicle structure	bearing type

Seat Configuration

Seat Configuration (continued)

Seat Material	• Leather/Alcantara Mix
Main seat adjustment	• Front and rear adjustment; • Backrest adjustment; • Height adjustment (4-way); • Leg rest adjustment; • Lumbar support (4-way)
Co-seat adjustment method	• Front and rear adjustment; • Backrest adjustment; • Height adjustment (4-way); • Leg rest adjustment; • Lumbar support (4-way)
Electric adjustment of driver's seat and passenger seat	Main •/Deputy •
Front seat functions	• Heating
Electric seat memory function	• Driving position
Front passenger seat rear adjustable buttons	-
Rear seat folding	• Proportional down
Front/rear center armrest	Front •/Rear •
Rear cup holder	•
Sports style seats	•

Active safety

Anti-lock Braking System (ABS)	•
Electronic Brakeforce Distribution (EBD/CBC)	•
Brake Assist System (EBA/BAS/BA)	•
Traction Control System (ASR/TCS/TRC)	•
Electronic Stability Control (ESC/ESP/DSC)	•
Tire Pressure Monitoring System (TPMS)	• Tire pressure alarm
Seat Belt Reminder	• Front row
ISOFIX Child Seat Anchors	•
Lane Departure Warning System (LDWS)	•
Autonomous Emergency Braking (AEB)	•

Active safety (continued)

Driver Fatigue Detection	•
Forward Collision Warning (FCW)	•
Rear Collision Warning	•
Emergency Call System (eCall)	•

Air conditioning/refrigerator

Air conditioning temperature control method	• Automatic air conditioning
Rear Independent Climate Control	•
Rear seat air vents	•
Temperature zone control	•
Car air purifier	-
In-cabin PM2.5 Filter	-

Passive safety

Driver/passenger airbag	Main •/Deputy •
Front/rear side airbags	Front/rear rear side airbag (USD 235)
Front/rear head airbags (curtain airbags)	Front •/Rear •

Wheel brake

Front Brake Type	Ventilation disc
Rear Brake Type	Ventilation disc
Parking brake type	Electronic Parking
Front Tire Size	245/35 R19
Rear Tire Size	245/35 R19
Spare Tire Size	Not full-size

Audio/Interior Lighting

Speaker Brand Name	•Bang & Olufsen
Number of speakers	• 19 Horn
Interior ambient lighting	• 30 colors
Touch reading light	•

Driving functions

Navigation traffic information display	•
---	---

Driving functions (continued)

Lane assist	•
Lane Keeping Assist System	○(USD 235)
Cruise control system	• Constant speed cruise; ○ Adaptive cruise (USD 2,382)
Satellite navigation system	•
Driving assistance level	○L2
Parking Assist	•

Exterior lighting

Low beam light source	•LED
High beam light source	•LED
LED daytime running lights	•
Adaptive high and low beam	•
Automatic headlights	•
Height-adjustable headlights	•
Headlight Delay Off	•
Lighting features	• Matrix
Turn headlights	•
Headlight rain and fog mode	•
Headlight cleaning device	•
Turn signal lamp	•

Exterior mirrors

Exterior mirror function	• Electric adjustment; • Electric folding; • Rearview mirror memory; • Rearview mirror heating; • Automatic downturning when reversing; • Automatic folding when locked; • Automatic anti-glare
---------------------------------	---

Appearance/anti-theft

Rim material	• Aluminum alloy
Electric trunk	-
Electronic engine immobilizer	•
Central locking system in the car	•

Appearance/anti-theft (continued)

Key Type	• Remote key
Keyless start system	•
Keyless entry function	• Full car
Appearance Kit	• Sports style
Remote start function	•

Skylight/Glass

Sunroof Type	• Openable panoramic sunroof
Front/rear electric windows	Front •/Rear •
One-touch window lifting function	• Full car
Window anti-pinch function	•
Rear windshield sunshade	○
Car makeup mirror	• Main driver's lamp; • co-pilot's lamp
Rear wiper	-
Rain sensor wiper function	• Rainfall-sensing
Rear side window sunshades	○ Manual

Interior and exterior color

Exterior Color	Sky Cloud Grey:#646464; Akona White:#FFFFFF; Legendary Black:#101010
Interior Color	Black:#000000; Black/Grey:#000000/#8D8F8E; Black/Magma Red:#000000/#A00A0A

Steering wheel/interior mirror

Steering Wheel Material	• Leather
Steering wheel position adjustment	• Manual up and down front and rear adjustment
Multi-function steering wheel	•
Heated Steering Wheel	○(USD 74)
Steering wheel memory	-
Trip computer display screen	• Color
Full LCD instrument panel	•

Steering wheel/interior mirror (continued)

LCD instrument size	• 12.3 inches
Interior rearview mirror function	• Automatic anti-glare
Gear shifting	• Electronic gear shift
HUD Head Up Digital Display	○(USD 2,632)
ETC Device	○(USD 74)
Steering Wheel Shift Paddles	•

Intelligent configuration

Connected Car Services	•
OTA Updates	-
4G/5G Network	• 4G;○ 5G(USD 353)
Mobile APP remote function	• Door control; • Vehicle start; • Air conditioning control

Driving Control

Driving mode switch	• Sport; • Economy; • Standard/Comfort; • Customization/Personalization
Automatic parking	•
Hill start assist	•
Energy recovery system	•
Variable steering ratio	○(USD 1,471)
Engine start-stop technology	•

Driving Hardware

Front/rear parking radar	Front •/Rear •
Driving Assistance Camera System	• 360-degree panoramic image
Front perception camera	• Monocular
Number of cameras	• 5
Number of ultrasonic radars	• 12

In-car charging

Multimedia/charging port	•USB;•Type-C
Number of USB/Type-C ports	• 2 in the front row/2 in the back row
Luggage compartment 12V power socket	•

"●" = Standard equipment

"□" = Not available

"○" = Optional equipment.

Note: These are Chinese market vehicles. Warranty coverage is not available outside of China.