

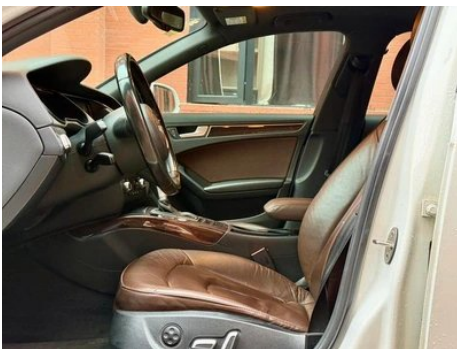
# Vehicle Detail Report

Audi A4L 2016 35 TFSI Automatic comfort type

## Basic Information

Brand	Audi
Mileage	118,000 km
Color	White
First Registration	2016-03-01
Transfer Count	0

## Vehicle Images





## Vehicle Condition

1. Radiator support, Cracking, Signs of disassembly, Replaced. 2. Right upper side rail, Paint repair. 3. Interior headliner, Repaired, Detached. 4. Right rear fender, Paint repair, Bodywork repair. 5. Interior headliner, Repaired, Detached.

## Configuration Information

### Model Information

<b>Model Name</b>	Audi A4L 2016 35 TFSI Automatic comfort type
<b>Launch Date</b>	2015.09

### Basic parameters

<b>Vehicle Class</b>	Mid-size car
<b>Energy Type</b>	Gasoline
<b>Maximum Power (kW)</b>	132
<b>Maximum Torque (N·m)</b>	320
<b>Transmission</b>	CVT continuously variable transmission (simulates 8 speeds)
<b>Body Type</b>	Sedan
<b>Engine</b>	2.0T 180 horsepower L4

## Basic parameters (continued)

<b>Dimensions (L×W×H) (mm)</b>	4761*1826*1439
<b>Official 0-100 km/h Acceleration (s)</b>	8.2
<b>Top Speed (km/h)</b>	230
<b>Curb Weight (kg)</b>	1600
<b>Maximum Gross Weight (kg)</b>	-

## engine

<b>Engine Model</b>	-
<b>Displacement (mL)</b>	1984
<b>Displacement (L)</b>	2.0
<b>Induction Type</b>	Turbocharging
<b>Cylinder Arrangement</b>	L
<b>Number of Cylinders</b>	4
<b>Valves per Cylinder</b>	4
<b>Valve Train</b>	DOHC
<b>Maximum Power (PS)</b>	180
<b>Max Power Speed (rpm)</b>	4000-6000
<b>Max Torque Speed (rpm)</b>	1500-3800
<b>Maximum net power (kW)</b>	-
<b>Fuel Grade</b>	95.
<b>Fuel Delivery System</b>	Mixed injection
<b>Cylinder Head Material</b>	Aluminum alloy
<b>Cylinder Block Material</b>	Cast iron
<b>Engine-specific technologies</b>	AVS

## Screen/System

<b>Central control color screen</b>	•
<b>Bluetooth/In-car Phone</b>	○
<b>Car TV</b>	○
<b>In-car CD/DVD Player</b>	• Multi-disc CD system; ○ Multi-disc DVD system

## Body

<b>Length (mm)</b>	4761
--------------------	------

## Body (continued)

<b>Width (mm)</b>	1826
<b>Height (mm)</b>	1439
<b>Wheelbase (mm)</b>	2869
<b>Front Track (mm)</b>	-
<b>Rear Track (mm)</b>	-
<b>Ground Clearance (Fully Loaded) (mm)</b>	118
<b>Door Opening Type</b>	-
<b>Number of Doors</b>	4
<b>Number of Seats</b>	5
<b>Fuel Tank Capacity (L)</b>	65
<b>Trunk volume (L)</b>	480
<b>Drag Coefficient (Cd)</b>	-

## Gearbox

<b>Abbreviation</b>	CVT continuously variable transmission (simulates 8 speeds)
<b>Number of Gears</b>	8
<b>Transmission Type</b>	Continuously Variable Transmission (CVT)

## Chassis steering

<b>Drive Type</b>	Front-engine, Front-wheel drive (FF)
<b>Front Suspension Type</b>	Five-link independent suspension
<b>Rear Suspension Type</b>	Trapezoidal-link independent suspension
<b>Power Steering Type</b>	Electric power assistance
<b>Vehicle structure</b>	bearing type

## Seat Configuration

<b>Seat Material</b>	• Leather
<b>Main seat adjustment</b>	• Front and rear adjustment; • Backrest adjustment; • Height adjustment (2-way); • Height adjustment (4-way)
<b>Co-seat adjustment method</b>	• Front and rear adjustment; • Backrest adjustment
<b>Electric adjustment of driver's seat and passenger seat</b>	Main •/Deputy •
<b>Front seat functions</b>	• Heating; ○ Ventilation (USD 1,456)

## Seat Configuration (continued)

<b>Electric seat memory function</b>	○
<b>Front passenger seat rear adjustable buttons</b>	-
<b>Rear seat folding</b>	• Proportional down
<b>Front/rear center armrest</b>	Front •/Rear •
<b>Rear cup holder</b>	•
<b>Second row seat functions</b>	○ Heating

## Active safety

<b>Anti-lock Braking System (ABS)</b>	•
<b>Electronic Brakeforce Distribution (EBD/CBC)</b>	•
<b>Brake Assist System (EBA/BAS/BA)</b>	•
<b>Traction Control System (ASR/TCS/TRC)</b>	•
<b>Electronic Stability Control (ESC/ESP/DSC)</b>	•
<b>Tire Pressure Monitoring System (TPMS)</b>	•
<b>Seat Belt Reminder</b>	•
<b>ISOFIX Child Seat Anchors</b>	•
<b>Lane Departure Warning System (LDWS)</b>	○
<b>Autonomous Emergency Braking (AEB)</b>	-
<b>Driver Fatigue Detection</b>	-

## Air conditioning/refrigerator

<b>Air conditioning temperature control method</b>	• Automatic air conditioning
<b>Rear Independent Climate Control</b>	-
<b>Rear seat air vents</b>	•
<b>Temperature zone control</b>	•
<b>Car air purifier</b>	-
<b>In-cabin PM2.5 Filter</b>	-

## Passive safety

## Passive safety (continued)

<b>Driver/passenger airbag</b>	Main •/Deputy •
<b>Front/rear side airbags</b>	Front •/Rear •
<b>Front/rear head airbags (curtain airbags)</b>	Front •/Rear •

## Wheel brake

<b>Front Brake Type</b>	Ventilation disc
<b>Rear Brake Type</b>	Disc
<b>Parking brake type</b>	Electronic Parking
<b>Front Tire Size</b>	225/50 R17
<b>Rear Tire Size</b>	225/50 R17
<b>Spare Tire Size</b>	Not full-size

## Audio/Interior Lighting

<b>Speaker Brand Name</b>	<input type="radio"/> Bang & Olufsen
<b>Number of speakers</b>	<input type="radio"/> ≥ 12 horns; • 10-11 horns

## Driving functions

<b>Navigation traffic information display</b>	-
<b>Lane assist</b>	<input type="radio"/>
<b>Lane Keeping Assist System</b>	-
<b>Cruise control system</b>	• Cruise control; <input type="radio"/> Adaptive cruise
<b>Satellite navigation system</b>	<input type="radio"/>
<b>Parking Assist</b>	-

## Exterior lighting

<b>Low beam light source</b>	• Xenon
<b>High beam light source</b>	• Xenon
<b>LED daytime running lights</b>	•
<b>Adaptive high and low beam</b>	-
<b>Automatic headlights</b>	•
<b>Front fog lights</b>	•
<b>Height-adjustable headlights</b>	•
<b>Headlight Delay Off</b>	-
<b>Turn headlights</b>	<input type="radio"/>

## Exterior lighting (continued)

<b>Headlight cleaning device</b>	•
----------------------------------	---

## Exterior mirrors

<b>Exterior mirror function</b>	• Electric adjustment; • Electric folding; ○ Mirror memory; • Mirror heating; ○ Automatic anti-glare
---------------------------------	------------------------------------------------------------------------------------------------------

## Appearance/anti-theft

<b>Rim material</b>	• Aluminum alloy
<b>Electric trunk</b>	-
<b>Electronic engine immobilizer</b>	•
<b>Central locking system in the car</b>	•
<b>Key Type</b>	• Remote key
<b>Keyless start system</b>	○
<b>Keyless entry function</b>	○

## Skylight/Glass

<b>Sunroof Type</b>	• Electric sunroof
<b>Front/rear electric windows</b>	Front •/Rear •
<b>Window anti-pinch function</b>	•
<b>Rear windshield sunshade</b>	○
<b>Car makeup mirror</b>	•
<b>Rear wiper</b>	-
<b>Rain sensor wiper function</b>	•
<b>Rear side window sunshades</b>	○

## Interior and exterior color

<b>Exterior Color</b>	Teak Brown:#2B1309; White Gold:#B7AB92; Phantom Black:#070A01; Crystal Silver:#C7C8CA; Eagle Grey:#C0C0C0; Ibis White:#F7F6F1
<b>Interior Color</b>	Black:#000000; Black/Velvet Beige:#000000/#BABB82; Black/Chestnut Brown:#000000/#544540; Grey/Titanium Grey:#989C9B/#8D8F8E

## Steering wheel/interior mirror

<b>Steering Wheel Material</b>	• Cortex
--------------------------------	----------

## Steering wheel/interior mirror (continued)

<b>Steering wheel position adjustment</b>	• Manual up and down front and rear adjustment
<b>Multi-function steering wheel</b>	•
<b>Heated Steering Wheel</b>	-
<b>Steering wheel memory</b>	-
<b>Trip computer display screen</b>	•
<b>Full LCD instrument panel</b>	-
<b>Interior rearview mirror function</b>	○ Auto-dimming (USD 221)
<b>Steering Wheel Shift Paddles</b>	○

## Intelligent configuration

<b>Connected Car Services</b>	-
<b>OTA Updates</b>	-

## Driving Control

<b>Automatic parking</b>	•
<b>Hill start assist</b>	•
<b>Variable steering ratio</b>	○
<b>Engine start-stop technology</b>	•

## Driving Hardware

<b>Front/rear parking radar</b>	Front •/Rear •
<b>Driving Assistance Camera System</b>	○ Reversing image

## In-car charging

<b>Multimedia/charging port</b>	•AUX
---------------------------------	------

## Optional Package

<b>Optional Package</b>	Automatic anti-glare exterior rearview mirror with memory function (USD 265; Including: rearview mirror memory, exterior rearview mirror automatic anti-glare), Smart key (USD 632; Including: one-key start, keyless entry)
-------------------------	------------------------------------------------------------------------------------------------------------------------------------------------------------------------------------------------------------------------------

---

"●" = Standard equipment

"□" = Not available

"○" = Optional equipment.

Note: These are Chinese market vehicles. Warranty coverage is not available outside of China.