

Vehicle Detail Report

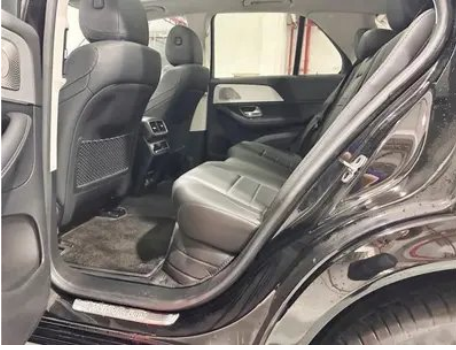
Mercedes-Benz GLE (Imported) 2024 GLE 350 4MATIC Dynamic

Basic Information

| | |
|--------------------|---------------|
| Brand | Mercedes-Benz |
| Mileage | 22,900 km |
| Color | Black |
| First Registration | 2023-10-01 |
| Transfer Count | 1 |

Vehicle Images





Vehicle Condition

1. Original metal body panels with factory paint.

Configuration Information

Model Information

| | |
|-------------------|---|
| Model Name | Mercedes-Benz GLE 2024 GLE 350 4MATIC Dynamic |
|-------------------|---|

Model Information (continued)

| | |
|-------------|---------|
| Launch Date | 2023.07 |
|-------------|---------|

Basic parameters

| | |
|--|-----------------------------------|
| Vehicle Class | Mid-size and large SUVs |
| Energy Type | Gasoline + 48V Mild Hybrid System |
| Maximum Power (kW) | 190 |
| Maximum Torque (N·m) | 400 |
| Transmission | 9-gear manual integration |
| Body Type | SUV |
| Engine | 2.0T 258 horsepower L4 |
| Dimensions (L×W×H) (mm) | 4927*2018*1797 |
| Official 0-100 km/h Acceleration (s) | 7.3 |
| Top Speed (km/h) | 218 |
| Curb Weight (kg) | 2230 |
| Maximum Gross Weight (kg) | 2800 |
| WLTP Combined Fuel Consumption (L/100km) | 9.1 |

engine

| | |
|------------------------|------------------|
| Engine Model | 254 920 |
| Displacement (mL) | 1999 |
| Displacement (L) | 2.0 |
| Induction Type | Turbocharging |
| Cylinder Arrangement | L |
| Number of Cylinders | 4 |
| Valves per Cylinder | 4 |
| Valve Train | DOHC |
| Maximum Power (PS) | 258 |
| Max Power Speed (rpm) | 5800 |
| Max Torque Speed (rpm) | 2000-3200 |
| Maximum net power (kW) | 190 |
| Fuel Grade | 95. |
| Fuel Delivery System | Direct injection |
| Cylinder Head Material | Aluminum alloy |

engine (continued)

| | |
|--------------------------------|----------------|
| Cylinder Block Material | Aluminum alloy |
| Engine layout | Longitudinal |

Screen/System

| | |
|--|--|
| Central control color screen | <ul style="list-style-type: none">• Touch LCD screen |
| Infotainment Screen Size | <ul style="list-style-type: none">• 12.3 inches |
| Bluetooth/In-car Phone | <ul style="list-style-type: none">• |
| Smartphone Integration/Mirroring | <ul style="list-style-type: none">• Support CarPlay;• Support CarLife;• Support Android Auto |
| Voice recognition control system | <ul style="list-style-type: none">• Multimedia system;• Navigation;• Telephone;• Air conditioning |
| Voice wake-up recognition by region | <ul style="list-style-type: none">• Single area |
| In-vehicle intelligent system | <ul style="list-style-type: none">• MBUX |
| App Store | <ul style="list-style-type: none">• |
| Voice assistant wake-up word | <ul style="list-style-type: none">• Hello, Mercedes |
| Continuous speech recognition | <ul style="list-style-type: none">• |

Body

| | |
|-------------------------------|------------|
| Length (mm) | 4927 |
| Width (mm) | 2018 |
| Height (mm) | 1797 |
| Wheelbase (mm) | 2995 |
| Front Track (mm) | 1679 |
| Rear Track (mm) | 1728 |
| Door Opening Type | swing door |
| Number of Doors | 5 |
| Number of Seats | 5 |
| Fuel Tank Capacity (L) | 85 |
| Trunk volume (L) | 825-2055 |
| Drag Coefficient (Cd) | - |
| Approach Angle (°) | 21.3 |
| Departure Angle (°) | 24.4 |

Gearbox

| | |
|---------------------|---------------------------|
| Abbreviation | 9-gear manual integration |
|---------------------|---------------------------|

Gearbox (continued)

| | |
|--------------------------|--|
| Number of Gears | 9 |
| Transmission Type | Automatic Transmission with Manual Mode (AT) |

Chassis steering

| | |
|---------------------------------------|--|
| Drive Type | Front-engine, All-wheel drive (F-AWD) |
| Four-wheel drive | Timely four-wheel drive |
| Central differential structure | Multi-plate clutch |
| Front Suspension Type | Double wishbone independent suspension |
| Rear Suspension Type | Multi-link independent suspension |
| Power Steering Type | Electric power assistance |
| Vehicle structure | bearing type |

Seat Configuration

| | |
|--|---|
| Seat Material | • Imitation leather |
| Main seat adjustment | • Front and rear adjustment; • Backrest adjustment; • Height adjustment (4-way); • Lumbar support (4-way) |
| Co-seat adjustment method | • Front and rear adjustment; • Backrest adjustment; • Height adjustment (4-way); • Lumbar support (4-way) |
| Electric adjustment of driver's seat and passenger seat | Main •/Deputy • |
| Front seat functions | • Heating; ○ Ventilation (USD 2,000) |
| Front passenger seat rear adjustable buttons | - |
| Rear seat folding | • Proportional down |
| Front/rear center armrest | Front •/Rear • |
| Rear cup holder | • |
| Second row seat functions | ○ Heating (USD 662) |

Active safety

| | |
|---|---|
| Anti-lock Braking System (ABS) | • |
| Electronic Brakeforce Distribution (EBD/CBC) | • |

Active safety (continued)

| | |
|---|-------------------------|
| Brake Assist System (EBA/BAS/BA) | • |
| Traction Control System (ASR/TCS/TRC) | • |
| Electronic Stability Control (ESC/ESP/DSC) | • |
| Tire Pressure Monitoring System (TPMS) | • Tire pressure display |
| Seat Belt Reminder | • Full car |
| ISOFIX Child Seat Anchors | • |
| Lane Departure Warning System (LDWS) | • |
| Autonomous Emergency Braking (AEB) | • |
| Driver Fatigue Detection | • |
| Forward Collision Warning (FCW) | • |
| Rear Collision Warning | • |
| Emergency Call System (eCall) | • |
| Door Opening Warning (DOW) | • |

Air conditioning/refrigerator

| | |
|--|------------------------------|
| Air conditioning temperature control method | • Automatic air conditioning |
| Rear Independent Climate Control | • |
| Rear seat air vents | • |
| Temperature zone control | • |
| Car air purifier | • |
| In-cabin PM2.5 Filter | • |

Passive safety

| | |
|--|-----------------|
| Driver/passenger airbag | Main •/Deputy • |
| Front/rear side airbags | Front •/Rear • |
| Front/rear head airbags (curtain airbags) | Front •/Rear • |

Wheel brake

| | |
|-------------------------|------------------|
| Front Brake Type | Ventilation disc |
|-------------------------|------------------|

Wheel brake (continued)

| | |
|---------------------------|--------------------|
| Rear Brake Type | Disc |
| Parking brake type | Electronic Parking |
| Front Tire Size | 275/55 R19 |
| Rear Tire Size | 275/55 R19 |
| Spare Tire Size | None |

Audio/Interior Lighting

| | |
|----------------------------------|---|
| Speaker Brand Name | <input type="radio"/> Voice of Burmester Berlin (USD 2,000) |
| Number of speakers | <input type="radio"/> 13 Horn |
| Interior ambient lighting | <ul style="list-style-type: none">• 64 colors |

Driving functions

| | |
|---|--|
| Navigation traffic information display | <ul style="list-style-type: none">• |
| Lane assist | <ul style="list-style-type: none">• |
| Lane Keeping Assist System | <ul style="list-style-type: none">• |
| Cruise control system | <ul style="list-style-type: none">• Full speed adaptive cruise |
| Satellite navigation system | <ul style="list-style-type: none">• |
| Driving assistance level | <ul style="list-style-type: none">• L2 |
| Lane centering | <ul style="list-style-type: none">• |
| Road traffic sign recognition | <ul style="list-style-type: none">• |
| Map Brand | <ul style="list-style-type: none">• Gaud |
| Parking Assist | <ul style="list-style-type: none">• |
| Lane Change Assist | <ul style="list-style-type: none">• |

Exterior lighting

| | |
|-------------------------------------|---|
| Low beam light source | <ul style="list-style-type: none">• LED |
| High beam light source | <ul style="list-style-type: none">• LED |
| LED daytime running lights | <ul style="list-style-type: none">• |
| Adaptive high and low beam | <ul style="list-style-type: none">• |
| Automatic headlights | <ul style="list-style-type: none">• |
| Height-adjustable headlights | <ul style="list-style-type: none">• |
| Headlight Delay Off | <ul style="list-style-type: none">• |

Exterior mirrors

Exterior mirrors (continued)

| | |
|---------------------------------|--|
| Exterior mirror function | <ul style="list-style-type: none">• Electric adjustment;• Electric folding;• Rearview mirror heating;• Automatic folding when locking the car;• Automatic anti-glare |
|---------------------------------|--|

Appearance/anti-theft

| | |
|--|--|
| Rim material | <ul style="list-style-type: none">• Aluminum alloy |
| Electric trunk | <ul style="list-style-type: none">• |
| Electronic engine immobilizer | <ul style="list-style-type: none">• |
| Central locking system in the car | <ul style="list-style-type: none">• |
| Key Type | <ul style="list-style-type: none">• Remote key |
| Keyless start system | <ul style="list-style-type: none">• |
| Electric trunk position memory | <ul style="list-style-type: none">• |
| Roof rack | <ul style="list-style-type: none">• |
| Remote start function | <ul style="list-style-type: none">• |

Skylight/Glass

| | |
|--|---|
| Sunroof Type | <ul style="list-style-type: none">• Openable panoramic sunroof |
| Front/rear electric windows | Front •/Rear • |
| One-touch window lifting function | <ul style="list-style-type: none">• Full car |
| Window anti-pinch function | <ul style="list-style-type: none">• |
| Car makeup mirror | <ul style="list-style-type: none">• Main driver's lamp;• co-pilot's lamp |
| Rear wiper | <ul style="list-style-type: none">• |
| Rain sensor wiper function | <ul style="list-style-type: none">• Rainfall-sensing |
| Heated water nozzle | ○ |

Interior and exterior color

| | |
|-----------------------|---|
| Exterior Color | Obsidian black:#000000; Arctic white:#FFFFE9; Zirconium quartz red:#AF021C; Space-time silver:#B1B2B7; Moonlight lime:#62686C; Grandmother stone green:#274A3B; Diamond white:#EFEA; Sodium blue:#2E517B; Far peak gray:#B9B9B9 |
|-----------------------|---|

Interior and exterior color (continued)

| | |
|-----------------------|---|
| Interior Color | Black:#000000; Macchiato Beige/Black:#AEA49E/#000000; Black/Cocoa Brown:#000000/#5E3D3D |
|-----------------------|---|

Steering wheel/interior mirror

| | |
|---|--|
| Steering Wheel Material | • Leather |
| Steering wheel position adjustment | • Manual up and down front and rear adjustment |
| Multi-function steering wheel | • |
| Heated Steering Wheel | ○ |
| Steering wheel memory | - |
| Trip computer display screen | • Color |
| Full LCD instrument panel | • |
| LCD instrument size | • 12.3 inches |
| Interior rearview mirror function | • Automatic anti-glare |
| Gear shifting | • Electronic gear shift |
| ETC Device | ○(USD 441) |
| Steering Wheel Shift Paddles | • |

Intelligent configuration

| | |
|-----------------------------------|--|
| Connected Car Services | • |
| OTA Updates | • |
| 4G/5G Network | •4G |
| Mobile APP remote function | • Door control; • Vehicle start-up; • Vehicle condition inquiry/diagnosis; • Vehicle location/vehicle search |

Driving Control

| | |
|-------------------------------------|---|
| Driving mode switch | • Sport; • Economy; • Standard/Comfort; • Off-Road; • Custom/Personalized |
| Automatic parking | • |
| Steep slope descent | • |
| Hill start assist | • |
| Variable steering ratio | • |
| Engine start-stop technology | • |

Driving Hardware

Driving Hardware (continued)

| | |
|---|---|
| Front/rear parking radar | Front •/Rear • |
| Driving Assistance Camera System | • Reversing image; ○ 360-degree panoramic image (USD 662) |
| Front perception camera | • Monocular x2 |
| Number of cameras | • 3; ○ 6 |
| Number of ultrasonic radars | • 12 |
| Transparent chassis/540-degree imaging | ○ |
| Millimeter wave radar quantity | • 5 |

In-car charging

| | |
|--|--|
| Multimedia/charging port | •Type-C |
| Number of USB/Type-C ports | • 3 in the front row/2 in the back row |
| Mobile phone wireless charging function | • Front row |
| Luggage compartment 12V power socket | • |

Optional Package

| | |
|-------------------------|--|
| Optional Package | Winter package (USD 662; Including: heated windshield cleaning system, steering wheel heating) |
|-------------------------|--|

"●" = Standard equipment

"_" = Not available

"○" = Optional equipment.

Note: These are Chinese market vehicles. Warranty coverage is not available outside of China.