

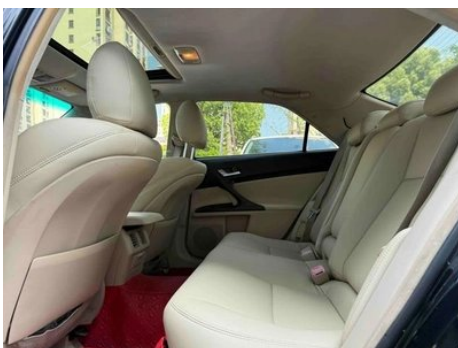
# Vehicle Detail Report

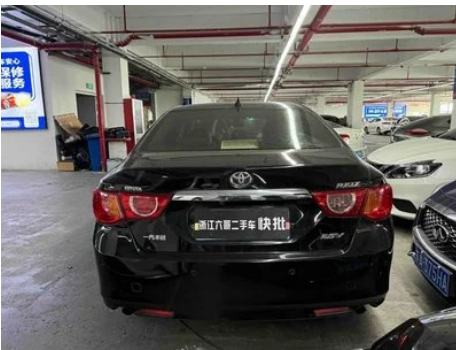
## Toyota Reiz 2010 2.5V demeanor elite edition

### Basic Information

Brand	Toyota
Mileage	195,700 km
Color	Black
First Registration	2011-11-01
Transfer Count	0

### Vehicle Images





## Vehicle Condition

1. Left rear quarter panel, Paint repair. 2. Right rear quarter panel, Paint repair.

## Configuration Information

### Model Information

<b>Model Name</b>	Toyota Reiz 2010 2.5V demeanor elite edition
<b>Launch Date</b>	2010.09

### Basic parameters

<b>Vehicle Class</b>	Mid-size car
<b>Energy Type</b>	Gasoline
<b>Maximum Power (kW)</b>	142

## Basic parameters (continued)

<b>Maximum Torque (N·m)</b>	236
<b>Transmission</b>	6-speed manual integration
<b>Body Type</b>	Sedan
<b>Engine</b>	2.5L 193 horsepower V6
<b>Dimensions (L×W×H) (mm)</b>	4735*1795*1450
<b>Official 0-100 km/h Acceleration (s)</b>	9
<b>Top Speed (km/h)</b>	220
<b>Curb Weight (kg)</b>	1545
<b>Maximum Gross Weight (kg)</b>	-
<b>NEDC Combined Fuel Consumption (L/100km)</b>	9

## engine

<b>Engine Model</b>	5GR-FE
<b>Displacement (mL)</b>	2497
<b>Displacement (L)</b>	2.5
<b>Induction Type</b>	Natural aspiration
<b>Cylinder Arrangement</b>	V
<b>Number of Cylinders</b>	6
<b>Valves per Cylinder</b>	4
<b>Compression Ratio</b>	10
<b>Valve Train</b>	DOHC
<b>Bore (mm)</b>	87.5
<b>Stroke (mm)</b>	69.2
<b>Maximum Power (PS)</b>	193
<b>Max Power Speed (rpm)</b>	6200
<b>Max Torque Speed (rpm)</b>	4400
<b>Maximum net power (kW)</b>	-
<b>Fuel Grade</b>	92.
<b>Fuel Delivery System</b>	Multi-point EFI
<b>Cylinder Head Material</b>	Aluminum alloy
<b>Cylinder Block Material</b>	Aluminum alloy
<b>Engine-specific technologies</b>	Dual VVT-i

## Screen/System

<b>Bluetooth/In-car Phone</b>	-
<b>In-car CD/DVD Player</b>	<ul style="list-style-type: none"><li>• Multi-disc CD system</li></ul>

## Body

<b>Length (mm)</b>	4735
<b>Width (mm)</b>	1795
<b>Height (mm)</b>	1450
<b>Wheelbase (mm)</b>	2850
<b>Front Track (mm)</b>	1545
<b>Rear Track (mm)</b>	1545
<b>Ground Clearance (Fully Loaded) (mm)</b>	175
<b>Door Opening Type</b>	-
<b>Number of Doors</b>	4
<b>Number of Seats</b>	5
<b>Fuel Tank Capacity (L)</b>	70
<b>Trunk volume (L)</b>	480
<b>Drag Coefficient (Cd)</b>	-

## Gearbox

<b>Abbreviation</b>	6-speed manual integration
<b>Number of Gears</b>	6
<b>Transmission Type</b>	Automatic Transmission with Manual Mode (AT)

## Chassis steering

<b>Drive Type</b>	Front-engine, Rear-wheel drive (FR)
<b>Front Suspension Type</b>	Double wishbone independent suspension
<b>Rear Suspension Type</b>	Multi-link independent suspension
<b>Power Steering Type</b>	Electric power assistance
<b>Vehicle structure</b>	bearing type

## Seat Configuration

<b>Seat Material</b>	<ul style="list-style-type: none"><li>• Leather</li></ul>
<b>Main seat adjustment</b>	<ul style="list-style-type: none"><li>• Front and rear adjustment;</li><li>• Backrest adjustment;</li><li>• Height adjustment (2-way);</li><li>• Height adjustment (4-way)</li></ul>
<b>Co-seat adjustment method</b>	<ul style="list-style-type: none"><li>• Front and rear adjustment;</li><li>• Backrest adjustment</li></ul>

## Seat Configuration (continued)

<b>Electric adjustment of driver's seat and passenger seat</b>	Main •/Deputy •
<b>Front seat functions</b>	• Heating
<b>Front passenger seat rear adjustable buttons</b>	-
<b>Second row seat adjustment</b>	• Backrest adjustment
<b>Rear seat folding</b>	• Proportional down
<b>Front/rear center armrest</b>	Front •/Rear •
<b>Rear cup holder</b>	•

## Active safety

<b>Anti-lock Braking System (ABS)</b>	•
<b>Electronic Brakeforce Distribution (EBD/CBC)</b>	•
<b>Brake Assist System (EBA/BAS/BA)</b>	•
<b>Traction Control System (ASR/TCS/TRC)</b>	•
<b>Electronic Stability Control (ESC/ESP/DSC)</b>	•
<b>Seat Belt Reminder</b>	•
<b>ISOFIX Child Seat Anchors</b>	•
<b>Lane Departure Warning System (LDWS)</b>	-
<b>Autonomous Emergency Braking (AEB)</b>	-
<b>Driver Fatigue Detection</b>	-

## Air conditioning/refrigerator

<b>Air conditioning temperature control method</b>	• Automatic air conditioning
<b>Rear Independent Climate Control</b>	-
<b>Rear seat air vents</b>	•
<b>Temperature zone control</b>	•
<b>Car air purifier</b>	-
<b>In-cabin PM2.5 Filter</b>	-

## Passive safety

## Passive safety (continued)

<b>Driver/passenger airbag</b>	Main •/Deputy •
<b>Front/rear side airbags</b>	Front •/Rear •
<b>Front/rear head airbags (curtain airbags)</b>	Front •/Rear •
<b>Knee airbag</b>	• Driver's knee airbag

## Wheel brake

<b>Front Brake Type</b>	Ventilation disc
<b>Rear Brake Type</b>	Disc
<b>Parking brake type</b>	Foot brake
<b>Front Tire Size</b>	215/60 R16
<b>Rear Tire Size</b>	215/60 R16
<b>Spare Tire Size</b>	Full size

## Audio/Interior Lighting

<b>Number of speakers</b>	• 6-7 Horns
---------------------------	-------------

## Driving functions

<b>Navigation traffic information display</b>	-
<b>Lane assist</b>	-
<b>Lane Keeping Assist System</b>	-
<b>Satellite navigation system</b>	-
<b>Parking Assist</b>	-

## Exterior lighting

<b>LED daytime running lights</b>	-
<b>Adaptive high and low beam</b>	-
<b>Automatic headlights</b>	•
<b>Front fog lights</b>	•
<b>Height-adjustable headlights</b>	•
<b>Headlight Delay Off</b>	-
<b>Headlight cleaning device</b>	•

## Exterior mirrors

<b>Exterior mirror function</b>	• Electric adjustment; • Electric folding
---------------------------------	---

## Appearance/anti-theft

## Appearance/anti-theft (continued)

<b>Rim material</b>	• Aluminum alloy
<b>Electric trunk</b>	-
<b>Electronic engine immobilizer</b>	•
<b>Central locking system in the car</b>	•
<b>Key Type</b>	• Remote key
<b>Keyless start system</b>	-

## Skylight/Glass

<b>Sunroof Type</b>	• Electric sunroof
<b>Front/rear electric windows</b>	Front •/Rear •
<b>Window anti-pinch function</b>	•
<b>Car makeup mirror</b>	•
<b>Rear wiper</b>	-

## Interior and exterior color

<b>Exterior Color</b>	gem pearl white #FCFAFC deep red mica #502E35 Black #000000 Silver #BABABA Ice Titanium Metal Color #4E484A dark blue mica #1C3B57
-----------------------	--

## Steering wheel/interior mirror

<b>Steering Wheel Material</b>	• Cortex
<b>Steering wheel position adjustment</b>	• Manual up and down front and rear adjustment
<b>Multi-function steering wheel</b>	•
<b>Heated Steering Wheel</b>	-
<b>Steering wheel memory</b>	-
<b>Trip computer display screen</b>	•
<b>Full LCD instrument panel</b>	-
<b>Interior rearview mirror function</b>	• Manual anti-glare

## Intelligent configuration

<b>Connected Car Services</b>	-
<b>OTA Updates</b>	-

## Driving Control

## Driving Control (continued)

<b>Automatic parking</b>	-
--------------------------	---

## Driving Hardware

<b>Front/rear parking radar</b>	-
---------------------------------	---

---

"●" = Standard equipment

"-" = Not available

"○" = Optional equipment.

Note: These are Chinese market vehicles. Warranty coverage is not available outside of China.