

# Vehicle Detail Report

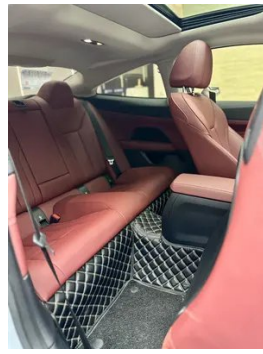
## BMW 4 Series 2023 425i M Sports suit

### Basic Information

|                    |             |
|--------------------|-------------|
| Brand              | BMW         |
| Mileage            | 34,000 km   |
| Color              | Silver-gray |
| First Registration | 2023-05-01  |
| Transfer Count     | 0           |

### Vehicle Images





## Vehicle Condition

1. Left front frame rail, Scratch, Deformation. 2. Right front frame rail, Scratch, Deformation.

## Configuration Information

### Model Information

|                    |                                      |
|--------------------|--------------------------------------|
| <b>Model Name</b>  | BMW 4 Series 2023 425i M Sports suit |
| <b>Launch Date</b> | 2023.04                              |

### Basic parameters

|   |                           |
|---|---------------------------|
| <b>Vehicle Class</b>                            | Mid-size car              |
| <b>Energy Type</b>                              | Gasoline                  |
| <b>Maximum Power (kW)</b>                       | 135                       |
| <b>Maximum Torque (N·m)</b>                     | 300                       |
| <b>Transmission</b>                             | 8-gear manual integration |
| <b>Body Type</b>                                | Hardtop Sports Car        |
| <b>Engine</b>                                   | 2.0L 184 hp L4            |
| <b>Dimensions (L×W×H) (mm)</b>                  | 4773*1852*1395            |
| <b>Official 0-100 km/h Acceleration (s)</b>     | 7.5                       |
| <b>Top Speed (km/h)</b>                         | 235                       |
| <b>Curb Weight (kg)</b>                         | 1590                      |
| <b>Maximum Gross Weight (kg)</b>                | 2015                      |
| <b>WLTP Combined Fuel Consumption (L/100km)</b> | 6.60                      |

## engine

|                                     |                          |
|-------------------------------------|--------------------------|
| <b>Engine Model</b>                 | B48B20A                  |
| <b>Displacement (mL)</b>            | 1998                     |
| <b>Displacement (L)</b>             | 2.0                      |
| <b>Induction Type</b>               | Turbocharging            |
| <b>Cylinder Arrangement</b>         | L                        |
| <b>Number of Cylinders</b>          | 4                        |
| <b>Valves per Cylinder</b>          | 4                        |
| <b>Compression Ratio</b>            | 11                       |
| <b>Valve Train</b>                  | DOHC                     |
| <b>Bore (mm)</b>                    | 82                       |
| <b>Stroke (mm)</b>                  | 94.6                     |
| <b>Maximum Power (PS)</b>           | 184                      |
| <b>Max Power Speed (rpm)</b>        | 5000-6500                |
| <b>Max Torque Speed (rpm)</b>       | 1350-4000                |
| <b>Maximum net power (kW)</b>       | 135                      |
| <b>Fuel Grade</b>                   | 95.                      |
| <b>Fuel Delivery System</b>         | Direct injection         |
| <b>Cylinder Head Material</b>       | Aluminum alloy           |
| <b>Cylinder Block Material</b>      | Aluminum alloy           |
| <b>Engine layout</b>                | Longitudinal             |
| <b>Engine-specific technologies</b> | Double-VANOS/Valvetronic |

## Screen/System

|   |  |
|---|--|
| <b>Central control color screen</b>     | <ul style="list-style-type: none"><li>• Touch LCD screen</li></ul>   |
| <b>Infotainment Screen Size</b>         | <ul style="list-style-type: none"><li>• 14.9 inches</li></ul>  |
| <b>Bluetooth/In-car Phone</b>           | <ul style="list-style-type: none"><li>•</li></ul>  |
| <b>Smartphone Integration/Mirroring</b> | <ul style="list-style-type: none"><li>• Support CarPlay</li></ul>  |
| <b>Voice recognition control system</b> | <ul style="list-style-type: none"><li>• Multimedia system;</li><li>• Navigation;</li><li>• Telephone;</li><li>• Air conditioning</li></ul> |
| <b>In-vehicle intelligent system</b>    | <ul style="list-style-type: none"><li>• iDrive</li></ul>   |

## Body

|                    |      |
|--------------------|------|
| <b>Length (mm)</b> | 4773 |
| <b>Width (mm)</b>  | 1852 |

## Body (continued)

|                               |      |
|-------------------------------|------|
| <b>Height (mm)</b>            | 1395 |
| <b>Wheelbase (mm)</b>         | 2851 |
| <b>Front Track (mm)</b>       | 1575 |
| <b>Rear Track (mm)</b>        | 1611 |
| <b>Door Opening Type</b>      | -    |
| <b>Number of Doors</b>        | 2    |
| <b>Number of Seats</b>        | 4    |
| <b>Fuel Tank Capacity (L)</b> | 59   |
| <b>Trunk volume (L)</b>       | 440  |
| <b>Drag Coefficient (Cd)</b>  | -    |

## Gearbox

|                          |  |
|--------------------------|--|
| <b>Abbreviation</b>      | 8-gear manual integration                    |
| <b>Number of Gears</b>   | 8  |
| <b>Transmission Type</b> | Automatic Transmission with Manual Mode (AT) |

## Chassis steering

|                              |   |
|------------------------------|---|
| <b>Drive Type</b>            | Front-engine, Rear-wheel drive (FR)               |
| <b>Front Suspension Type</b> | Dual-ball-joint MacPherson independent suspension |
| <b>Rear Suspension Type</b>  | Multi-link independent suspension                 |
| <b>Power Steering Type</b>   | Electric power assistance                         |
| <b>Vehicle structure</b>     | bearing type                                      |

## Seat Configuration

|  |   |
|--|---|
| <b>Seat Material</b>   | <input type="radio"/> Leather (USD 1,750); • Imitation leather, <input type="radio"/> Leather/Alcantara mix and match                               |
| <b>Main seat adjustment</b>                                    | • Front-to-back adjustment; • Backrest adjustment; • Height adjustment (4-way); • Leg rest adjustment; <input type="radio"/> Lumbar support (4-way) |
| <b>Co-seat adjustment method</b>                               | • Front-to-back adjustment; • Backrest adjustment; • Height adjustment (4-way); • Leg rest adjustment; <input type="radio"/> Lumbar support (4-way) |
| <b>Electric adjustment of driver's seat and passenger seat</b> | Main •/Deputy •   |
| <b>Front seat functions</b>                                    | <input type="radio"/> Heating (USD 529)   |

## Seat Configuration (continued)

|   |   |
|---|---|
| <b>Electric seat memory function</b>                | <ul style="list-style-type: none"><li>• Driving position</li></ul>  |
| <b>Front passenger seat rear adjustable buttons</b> | -   |
| <b>Rear seat folding</b>                            | <ul style="list-style-type: none"><li>• Proportional down</li></ul> |
| <b>Front/rear center armrest</b>                    | Front •/Rear •  |
| <b>Rear cup holder</b>                              | <ul style="list-style-type: none"><li>•</li></ul>                   |
| <b>Sports style seats</b>                           | <ul style="list-style-type: none"><li>•</li></ul>                   |

## Active safety

|   |   |
|---|---|
| <b>Anti-lock Braking System (ABS)</b>               | <ul style="list-style-type: none"><li>•</li></ul>                       |
| <b>Electronic Brakeforce Distribution (EBD/CBC)</b> | <ul style="list-style-type: none"><li>•</li></ul>                       |
| <b>Brake Assist System (EBA/BAS/BA)</b>             | <ul style="list-style-type: none"><li>•</li></ul>                       |
| <b>Traction Control System (ASR/TCS/TRC)</b>        | <ul style="list-style-type: none"><li>•</li></ul>                       |
| <b>Electronic Stability Control (ESC/ESP/DSC)</b>   | <ul style="list-style-type: none"><li>•</li></ul>                       |
| <b>Tire Pressure Monitoring System (TPMS)</b>       | <ul style="list-style-type: none"><li>• Tire pressure display</li></ul> |
| <b>Seat Belt Reminder</b>                           | <ul style="list-style-type: none"><li>• Full car</li></ul>              |
| <b>ISOFIX Child Seat Anchors</b>                    | <ul style="list-style-type: none"><li>•</li></ul>                       |
| <b>Lane Departure Warning System (LDWS)</b>         | <ul style="list-style-type: none"><li>•</li></ul>                       |
| <b>Autonomous Emergency Braking (AEB)</b>           | <ul style="list-style-type: none"><li>•</li></ul>                       |
| <b>Driver Fatigue Detection</b>                     | <ul style="list-style-type: none"><li>•</li></ul>                       |
| <b>Forward Collision Warning (FCW)</b>              | <ul style="list-style-type: none"><li>•</li></ul>                       |
| <b>Emergency Call System (eCall)</b>                | <ul style="list-style-type: none"><li>•</li></ul>                       |
| <b>Built-in Dashcam</b>                             | ○(USD 279)  |

## Air conditioning/refrigerator

|  |  |
|--|--|
| <b>Air conditioning temperature control method</b> | <ul style="list-style-type: none"><li>• Automatic air conditioning</li></ul> |
| <b>Rear Independent Climate Control</b>            | <ul style="list-style-type: none"><li>•</li></ul>                            |
| <b>Rear seat air vents</b>                         | <ul style="list-style-type: none"><li>•</li></ul>                            |

## Air conditioning/refrigerator (continued)

|                          |   |
|--------------------------|---|
| Temperature zone control | • |
| Car air purifier         | - |
| In-cabin PM2.5 Filter    | • |

## Passive safety

|   |                 |
|---|-----------------|
| Driver/passenger airbag                   | Main •/Deputy • |
| Front/rear side airbags                   | Front •/Rear-   |
| Front/rear head airbags (curtain airbags) | Front •/Rear •  |
| Run-flat tires                            | •               |

## Wheel brake

|                    |                    |
|--------------------|--------------------|
| Front Brake Type   | Ventilation disc   |
| Rear Brake Type    | Ventilation disc   |
| Parking brake type | Electronic Parking |
| Front Tire Size    | 225/45 R18         |
| Rear Tire Size     | 255/40 R18         |
| Spare Tire Size    | None               |

## Audio/Interior Lighting

|                           |                            |
|---------------------------|----------------------------|
| Speaker Brand Name        | ○Harman/Kardon (USD 1,250) |
| Number of speakers        | ○ ≥ 12 horns; • 8-9 horns  |
| Interior ambient lighting | • 11 colors                |

## Driving functions

|  |  |
|--|--|
| Navigation traffic information display | •  |
| Lane assist                            | ○  |
| Lane Keeping Assist System             | •  |
| Cruise control system                  | • Constant speed cruise; ○ Adaptive cruise (USD 662), ○ Full speed adaptive cruise |
| Satellite navigation system            | •  |
| Driving assistance level               | ○L2  |
| Lane centering                         | ○  |
| Road traffic sign recognition          | ○  |
| Tracking reverse                       | •  |
| Parking Assist                         | •  |

## Driving functions (continued)

|                           |   |
|---------------------------|---|
| <b>Lane Change Assist</b> | ○ |
|---------------------------|---|

## Exterior lighting

|                                     |      |
|-------------------------------------|------|
| <b>Low beam light source</b>        | •LED |
| <b>High beam light source</b>       | •LED |
| <b>LED daytime running lights</b>   | •    |
| <b>Adaptive high and low beam</b>   | -    |
| <b>Automatic headlights</b>         | •    |
| <b>Height-adjustable headlights</b> | •    |
| <b>Headlight Delay Off</b>          | •    |

## Exterior mirrors

|                                 |   |
|---------------------------------|---|
| <b>Exterior mirror function</b> | • Electric adjustment; • Electric folding; • Rearview mirror memory; • Rearview mirror heating; • Automatic downturning when reversing; • Automatic folding when locked; • Automatic anti-glare |
|---------------------------------|---|

## Appearance/anti-theft

|  |                      |
|--|----------------------|
| <b>Rim material</b>                      | • Aluminum alloy     |
| <b>Electric trunk</b>                    | ○(USD 691)           |
| <b>Electronic engine immobilizer</b>     | •                    |
| <b>Central locking system in the car</b> | •                    |
| <b>Key Type</b>                          | • Remote key         |
| <b>Keyless start system</b>              | •                    |
| <b>Keyless entry function</b>            | ○ Full car (USD 838) |
| <b>Appearance Kit</b>                    | • Sports style       |
| <b>Hands-free Trunk</b>                  | ○                    |
| <b>Remote start function</b>             | •                    |
| <b>Active closed grille</b>              | •                    |
| <b>Frameless door design</b>             | •                    |

## Skylight/Glass

|                                    |                    |
|------------------------------------|--------------------|
| <b>Sunroof Type</b>                | • Electric sunroof |
| <b>Front/rear electric windows</b> | Front •/Rear-      |

## Skylight/Glass (continued)

|  |   |
|--|---|
| <b>One-touch window lifting function</b> | <ul style="list-style-type: none"><li>• Full car</li></ul>                              |
| <b>Window anti-pinch function</b>        | <ul style="list-style-type: none"><li>•</li></ul>                                       |
| <b>Car makeup mirror</b>                 | <ul style="list-style-type: none"><li>• Main driver's lamp; • co-pilot's lamp</li></ul> |
| <b>Rear wiper</b>                        | -   |
| <b>Rain sensor wiper function</b>        | <ul style="list-style-type: none"><li>• Rainfall-sensing</li></ul>                      |

## Interior and exterior color

|                       |  |
|-----------------------|--|
| <b>Exterior Color</b> | San Remo Green:#6E825F; Gem Green:#242224; Tourmaline gray:#5D564C; Porty Blue:#364D96; Brooklyn Grey:#B4CEDF; Danquan Stone Blue:#05526E; Speed Blue:#4C5E80, Ore White:#E7E7E7, Grit Red:#820A0A |
| <b>Interior Color</b> | Black, Volcano Red:#000000/#FF0F0F, Black:#000000, Black, Cognac:#000000/#94693E   |

## Steering wheel/interior mirror

|   |  |
|---|--|
| <b>Steering Wheel Material</b>            | <ul style="list-style-type: none"><li>• Leather</li></ul>                                      |
| <b>Steering wheel position adjustment</b> | <ul style="list-style-type: none"><li>• Manual up and down front and rear adjustment</li></ul> |
| <b>Multi-function steering wheel</b>      | <ul style="list-style-type: none"><li>•</li></ul>  |
| <b>Heated Steering Wheel</b>              | ○(USD 368)   |
| <b>Steering wheel memory</b>              | -  |
| <b>Trip computer display screen</b>       | <ul style="list-style-type: none"><li>• Color</li></ul>  |
| <b>Full LCD instrument panel</b>          | <ul style="list-style-type: none"><li>•</li></ul>  |
| <b>LCD instrument size</b>                | <ul style="list-style-type: none"><li>• 12.3 inches</li></ul>                                  |
| <b>Interior rearview mirror function</b>  | <ul style="list-style-type: none"><li>• Automatic anti-glare</li></ul>                         |
| <b>Gear shifting</b>                      | <ul style="list-style-type: none"><li>• Electronic gear shift</li></ul>                        |
| <b>HUD Head Up Digital Display</b>        | ○(USD 1,559)   |
| <b>Steering Wheel Shift Paddles</b>       | <ul style="list-style-type: none"><li>•</li></ul>  |

## Intelligent configuration

|                               |   |
|-------------------------------|---|
| <b>Connected Car Services</b> | <ul style="list-style-type: none"><li>•</li></ul> |
|-------------------------------|---|

## Intelligent configuration (continued)

|                                   |                  |
|-----------------------------------|------------------|
| <b>OTA Updates</b>                | •                |
| <b>4G/5G Network</b>              | •4G;○5G(USD 426) |
| <b>Mobile APP remote function</b> | •                |

## Driving Control

|                                     |   |
|-------------------------------------|---|
| <b>Driving mode switch</b>          | • Sport; • Economy; • Standard/Comfort; • Customization/Personalization |
| <b>Automatic parking</b>            | •   |
| <b>Hill start assist</b>            | •   |
| <b>Variable steering ratio</b>      | ○(USD 838)  |
| <b>Engine start-stop technology</b> | •   |

## Driving Hardware

|   |   |
|---|---|
| <b>Front/rear parking radar</b>         | Front •/Rear •  |
| <b>Driving Assistance Camera System</b> | • Reversing image; ○ 360-degree panoramic image (USD 750) |
| <b>Front perception camera</b>          | • Monocular   |
| <b>Number of ultrasonic radars</b>      | • 12  |
| <b>Millimeter wave radar quantity</b>   | ○ 5   |

## In-car charging

|  |                       |
|--|-----------------------|
| <b>Multimedia/charging port</b>                | •USB;•Type-C          |
| <b>Number of USB/Type-C ports</b>              | • 2 in the front row  |
| <b>Mobile phone wireless charging function</b> | ○ Front row (USD 279) |

## Optional Package

## Optional Package (continued)

| Optional Package |   |
|------------------|---|
|                  | Automatic parking assist system Plus(USD 750; including: 360-degree panoramic parking image, remote 3D parking image, automatic parking in place, tracking reversing assist function); driving safety assist system (USD 1,250; including: including forward Collision warning and emergency braking assist, lane correction assist, lane change blind zone warning, speed limit recognition assist function), Automated Driving Assistance System Pro (USD 2,750; including: forward collision warning and emergency braking assistance, lane correction assistance, lane change blind zone warning, speed limit recognition assistance, assisted driving, traffic jam assistance, lane change assistance, emergency parking assistance functions) |

"●" = Standard equipment

"-" = Not available

"○" = Optional equipment.

Note: These are Chinese market vehicles. Warranty coverage is not available outside of China.