

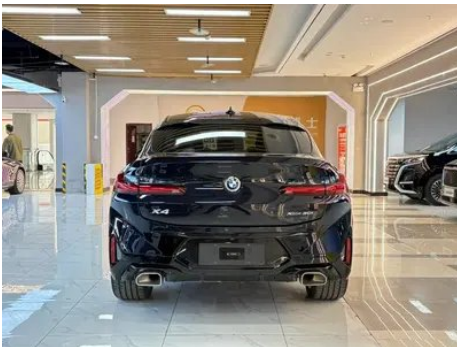
Vehicle Detail Report

BMW X4 2022 xDrive 30i M Sports suit

Basic Information

| | |
|--------------------|------------|
| Brand | BMW |
| Mileage | 15,000 km |
| Color | Black |
| First Registration | 2024-01-01 |
| Transfer Count | 1 |

Vehicle Images







Vehicle Condition

1. Inner side of left B-pillar, Dent, Non-accident-related deformation. 2. Inner side of right B-pillar, Deformation.

Configuration Information

Model Information

| | |
|--------------------|--------------------------------------|
| Model Name | BMW X4 2022 xDrive 30i M Sports suit |
| Launch Date | 2021.10 |

Basic parameters

| | |
|---|---------------------------|
| Vehicle Class | Mid-size SUV |
| Energy Type | Gasoline |
| Maximum Power (kW) | 180 |
| Maximum Torque (N·m) | 350 |
| Transmission | 8-gear manual integration |
| Body Type | SUV Crossover |
| Engine | 2.0T 245 horsepower L4 |
| Dimensions (L×W×H) (mm) | 4762*1926*1632 |
| Official 0-100 km/h Acceleration (s) | 6.8 |
| Top Speed (km/h) | 230 |
| Curb Weight (kg) | 1895 |
| Maximum Gross Weight (kg) | 2450 |
| WLTP Combined Fuel Consumption (L/100km) | 8.2 |

engine

| | |
|-----------------------------|---------------|
| Engine Model | - |
| Displacement (mL) | 1998 |
| Displacement (L) | 2.0 |
| Induction Type | Turbocharging |
| Cylinder Arrangement | L |

engine (continued)

| | |
|--------------------------------|------------------|
| Number of Cylinders | 4 |
| Valves per Cylinder | 4 |
| Valve Train | DOHC |
| Maximum Power (PS) | 245 |
| Max Power Speed (rpm) | 5000-6500 |
| Max Torque Speed (rpm) | 1560-4800 |
| Maximum net power (kW) | 180 |
| Fuel Grade | 95. |
| Fuel Delivery System | Direct injection |
| Cylinder Head Material | Aluminum alloy |
| Cylinder Block Material | Aluminum alloy |
| Engine layout | Longitudinal |

Screen/System

| | |
|---|--|
| Central control color screen | <ul style="list-style-type: none">• Touch LCD screen |
| Infotainment Screen Size | <ul style="list-style-type: none">• 12.3 inches |
| Bluetooth/In-car Phone | <ul style="list-style-type: none">• |
| Smartphone Integration/Mirroring | <ul style="list-style-type: none">• Support CarPlay;• Support CarLife |
| Voice recognition control system | <ul style="list-style-type: none">• Multimedia system;• Navigation;• Telephone |
| In-vehicle intelligent system | <ul style="list-style-type: none">• iDrive |
| Gesture Control | ○(USD 294) |

Body

| | |
|-------------------------------|------|
| Length (mm) | 4762 |
| Width (mm) | 1926 |
| Height (mm) | 1632 |
| Wheelbase (mm) | 2864 |
| Front Track (mm) | - |
| Rear Track (mm) | - |
| Door Opening Type | - |
| Number of Doors | 5 |
| Number of Seats | 5 |
| Fuel Tank Capacity (L) | 65 |

Body (continued)

| | |
|------------------------------|---|
| Trunk volume (L) | - |
| Drag Coefficient (Cd) | - |

Gearbox

| | |
|--------------------------|--|
| Abbreviation | 8-gear manual integration |
| Number of Gears | 8 |
| Transmission Type | Automatic Transmission with Manual Mode (AT) |

Chassis steering

| | |
|---------------------------------------|---|
| Drive Type | Front-engine, All-wheel drive (F-AWD) |
| Four-wheel drive | Timely four-wheel drive |
| Central differential structure | Multi-plate clutch |
| Front Suspension Type | Dual-ball-joint MacPherson independent suspension |
| Rear Suspension Type | Five-link rear suspension |
| Power Steering Type | Electric power assistance |
| Vehicle structure | bearing type |

Seat Configuration

| | |
|--|---|
| Seat Material | <input type="radio"/> Leather (USD 2,353); <input checked="" type="radio"/> Imitation leather |
| Main seat adjustment | <ul style="list-style-type: none">• Front and rear adjustment;• Backrest adjustment;• Height adjustment (4-way);• Leg support adjustment |
| Co-seat adjustment method | <ul style="list-style-type: none">• Front and rear adjustment;• Backrest adjustment;• Height adjustment (4-way);• Leg support adjustment |
| Electric adjustment of driver's seat and passenger seat | Main <input checked="" type="checkbox"/> /Deputy <input checked="" type="checkbox"/> |
| Front seat functions | <input type="radio"/> Heating (USD 441) |
| Electric seat memory function | <ul style="list-style-type: none">• Driving position |
| Front passenger seat rear adjustable buttons | - |
| Second row seat adjustment | <ul style="list-style-type: none">• Backrest adjustment |
| Rear seat folding | <ul style="list-style-type: none">• Proportional down |
| Front/rear center armrest | Front <input checked="" type="checkbox"/> /Rear <input checked="" type="checkbox"/> |

Seat Configuration (continued)

| | |
|--------------------|---|
| Rear cup holder | • |
| Sports style seats | • |

Active safety

| | |
|--|-------------------------|
| Anti-lock Braking System (ABS) | • |
| Electronic Brakeforce Distribution (EBD/CBC) | • |
| Brake Assist System (EBA/BAS/BA) | • |
| Traction Control System (ASR/TCS/TRC) | • |
| Electronic Stability Control (ESC/ESP/DSC) | • |
| Tire Pressure Monitoring System (TPMS) | • Tire pressure display |
| Seat Belt Reminder | • Front row |
| ISOFIX Child Seat Anchors | • |
| Lane Departure Warning System (LDWS) | ○ |
| Autonomous Emergency Braking (AEB) | ○ |
| Driver Fatigue Detection | • |
| Forward Collision Warning (FCW) | • |
| Emergency Call System (eCall) | • |
| Built-in Dashcam | • |

Air conditioning/refrigerator

| | |
|---|------------------------------|
| Air conditioning temperature control method | • Automatic air conditioning |
| Rear Independent Climate Control | • |
| Rear seat air vents | • |
| Temperature zone control | • |
| Car air purifier | - |
| In-cabin PM2.5 Filter | - |

Passive safety

| | |
|-------------------------|-----------------|
| Driver/passenger airbag | Main •/Deputy • |
|-------------------------|-----------------|

Passive safety (continued)

| | |
|--|----------------|
| Front/rear side airbags | Front •/Rear- |
| Front/rear head airbags (curtain airbags) | Front •/Rear • |
| Run-flat tires | • |

Wheel brake

| | |
|---------------------------|--------------------|
| Front Brake Type | Ventilation disc |
| Rear Brake Type | Ventilation disc |
| Parking brake type | Electronic Parking |
| Front Tire Size | 245/45 R20 |
| Rear Tire Size | 275/40 R20 |
| Spare Tire Size | None |

Audio/Interior Lighting

| | |
|----------------------------------|---|
| Speaker Brand Name | <input type="radio"/> Harman/Kardon (USD 1,471) |
| Number of speakers | • 9 horn; <input type="radio"/> 16 horn |
| Interior ambient lighting | • 11 colors |

Driving functions

| | |
|---|-----------------------|
| Navigation traffic information display | • |
| Lane assist | <input type="radio"/> |
| Lane Keeping Assist System | - |
| Cruise control system | • Cruise control |
| Satellite navigation system | • |
| Road traffic sign recognition | <input type="radio"/> |
| Tracking reverse | • |
| Parking Assist | • |

Exterior lighting

| | |
|-----------------------------------|------|
| Low beam light source | •LED |
| High beam light source | •LED |
| LED daytime running lights | • |
| Adaptive high and low beam | • |
| Automatic headlights | • |

Exterior lighting (continued)

| | |
|-------------------------------------|---|
| Height-adjustable headlights | <ul style="list-style-type: none">• |
| Headlight Delay Off | <ul style="list-style-type: none">• |
| Turn headlights | <ul style="list-style-type: none">• |

Exterior mirrors

| | |
|---------------------------------|---|
| Exterior mirror function | <ul style="list-style-type: none">• Electric adjustment;• Electric folding;• Rearview mirror memory;• Rearview mirror heating;• Automatic downturning when reversing;• Automatic folding when locked;• Automatic anti-glare |
|---------------------------------|---|

Appearance/anti-theft

| | |
|--|--|
| Rim material | <ul style="list-style-type: none">• Aluminum alloy |
| Electric trunk | <ul style="list-style-type: none">• |
| Electronic engine immobilizer | <ul style="list-style-type: none">• |
| Central locking system in the car | <ul style="list-style-type: none">• |
| Key Type | <ul style="list-style-type: none">• Remote key |
| Keyless start system | <ul style="list-style-type: none">• |
| Keyless entry function | <ul style="list-style-type: none">• Full car |
| Appearance Kit | <ul style="list-style-type: none">• Sports style |
| Hands-free Trunk | <ul style="list-style-type: none">• |
| Electric trunk position memory | <ul style="list-style-type: none">• |
| Roof rack | ○(USD 441) |
| Active closed grille | <ul style="list-style-type: none">• |

Skylight/Glass

| | |
|--|---|
| Sunroof Type | <ul style="list-style-type: none">• Openable panoramic sunroof |
| Front/rear electric windows | Front •/Rear • |
| One-touch window lifting function | <ul style="list-style-type: none">• Full car |
| Window anti-pinch function | <ul style="list-style-type: none">• |
| Car makeup mirror | <ul style="list-style-type: none">• Main driver's lamp;• co-pilot's lamp |
| Rear wiper | - |
| Rain sensor wiper function | <ul style="list-style-type: none">• Rainfall-sensing |

Interior and exterior color

| | |
|-----------------------|--|
| Exterior Color | Brooklyn gray:#B4CEDF; Carbon black:#0F1319; Snow mountain white:#FAFAFA; Gem green:#242224; Danquan stone blue:#05526E; Fragrant red:#6E1E24; Quantum blue:#0A4F8B; Mysterious gray:#3C3C3C |
| Interior Color | Black/Fire Red:#000000/#FF0F0F; Cognac:#C3694B; Black:#000000; Black/Volcano Red:#000000/#FF0F0F; Black/Canberra Beige:#000000/#EBD3B9 |

Steering wheel/interior mirror

| | |
|---|--|
| Steering Wheel Material | <ul style="list-style-type: none">• Leather |
| Steering wheel position adjustment | <ul style="list-style-type: none">• Manual up and down front and rear adjustment |
| Multi-function steering wheel | <ul style="list-style-type: none">• |
| Heated Steering Wheel | <input type="radio"/> (USD 294) |
| Steering wheel memory | - |
| Trip computer display screen | <ul style="list-style-type: none">• Color |
| Full LCD instrument panel | <ul style="list-style-type: none">• |
| LCD instrument size | <ul style="list-style-type: none">• 12.3 inches |
| Interior rearview mirror function | <ul style="list-style-type: none">• Automatic anti-glare |
| Gear shifting | <ul style="list-style-type: none">• Electronic gear shift |
| HUD Head Up Digital Display | <input type="radio"/> (USD 1,324) |
| Steering Wheel Shift Paddles | <ul style="list-style-type: none">• |

Intelligent configuration

| | |
|-----------------------------------|--|
| Connected Car Services | <ul style="list-style-type: none">• |
| OTA Updates | <ul style="list-style-type: none">• |
| 4G/5G Network | <ul style="list-style-type: none">• 4G |
| Mobile APP remote function | <ul style="list-style-type: none">• |
| Wi-Fi hotspots | <input type="radio"/> |

Driving Control

Driving Control (continued)

| | |
|-------------------------------------|---|
| Driving mode switch | • Sport; • Economy; • Standard/Comfort; • Customization/Personalization |
| Automatic parking | • |
| Steep slope descent | • |
| Hill start assist | • |
| Variable suspension function | ○ Suspension hardness adjustment (USD 1,324) |
| Variable steering ratio | • |
| Engine start-stop technology | • |

Driving Hardware

| | |
|---|------------------------------|
| Front/rear parking radar | Front •/Rear • |
| Driving Assistance Camera System | • 360-degree panoramic image |

In-car charging

| | |
|---|--|
| Multimedia/charging port | •USB;•Type-C |
| Number of USB/Type-C ports | • 2 in the front row/2 in the back row |
| Luggage compartment 12V power socket | • |

"●" = Standard equipment

"_" = Not available

"○" = Optional equipment.

Note: These are Chinese market vehicles. Warranty coverage is not available outside of China.