

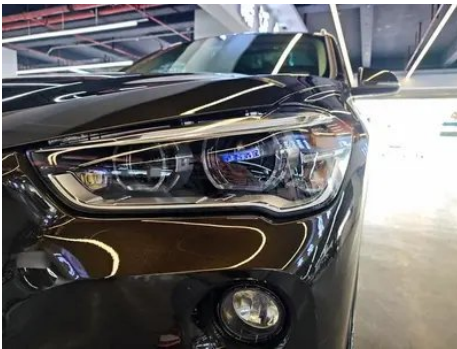
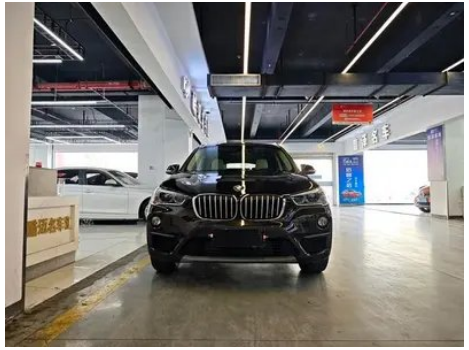
Vehicle Detail Report

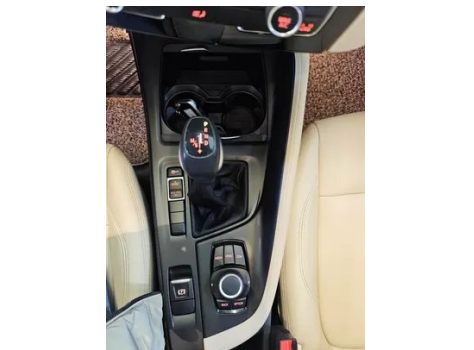
BMW X1 2019 sDrive20Li Leading Type

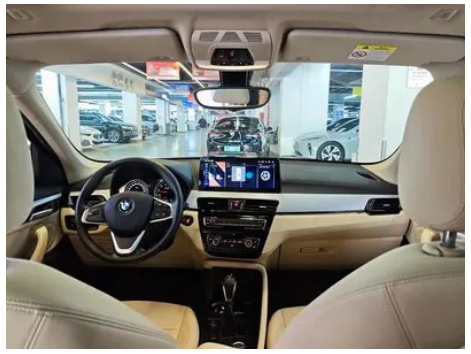
Basic Information

| | |
|--------------------|--------------|
| Brand | BMW |
| Mileage | 27,000 km |
| Color | Coffee color |
| First Registration | 2019-06-01 |
| Transfer Count | 2 |

Vehicle Images







Vehicle Condition

1. Right rear door, Body panel repair. 2. Trunk lid, Body panel repair. 3. Right rear quarter panel, Body panel repair.

Configuration Information

Model Information

| | |
|--------------------|-------------------------------------|
| Model Name | BMW X1 2019 sDrive20Li Leading Type |
| Launch Date | 2018.10 |

Basic parameters

| | |
|---|---------------------------|
| Vehicle Class | Compact SUV |
| Energy Type | Gasoline |
| Maximum Power (kW) | 141 |
| Maximum Torque (N·m) | 280 |
| Transmission | 8-gear manual integration |
| Body Type | SUV |
| Engine | 2.0L 192 hp L4 |
| Dimensions (L×W×H) (mm) | 4565*1821*1624 |
| Official 0-100 km/h Acceleration (s) | 8.2 |
| Top Speed (km/h) | 220 |
| Curb Weight (kg) | 1619 |
| Maximum Gross Weight (kg) | - |
| NEDC Combined Fuel Consumption (L/100km) | 6.5 |

engine

| | |
|-----------------------------|---------------|
| Engine Model | - |
| Displacement (mL) | 1998 |
| Displacement (L) | 2.0 |
| Induction Type | Turbocharging |
| Cylinder Arrangement | L |

engine (continued)

| | |
|--------------------------------|------------------|
| Number of Cylinders | 4 |
| Valves per Cylinder | 4 |
| Valve Train | DOHC |
| Bore (mm) | 82 |
| Stroke (mm) | 94.6 |
| Maximum Power (PS) | 192 |
| Max Power Speed (rpm) | 5000-6000 |
| Max Torque Speed (rpm) | 1250-4600 |
| Maximum net power (kW) | - |
| Fuel Grade | 95. |
| Fuel Delivery System | Direct injection |
| Cylinder Head Material | Aluminum alloy |
| Cylinder Block Material | Aluminum alloy |

Screen/System

| | |
|---|--|
| Central control color screen | <ul style="list-style-type: none">• |
| Infotainment Screen Size | •6.5 inches |
| Bluetooth/In-car Phone | <ul style="list-style-type: none">• |
| Voice recognition control system | <ul style="list-style-type: none">• Multimedia system;• Navigation;• Telephone |

Body

| | |
|-------------------------------|------|
| Length (mm) | 4565 |
| Width (mm) | 1821 |
| Height (mm) | 1624 |
| Wheelbase (mm) | 2780 |
| Front Track (mm) | 1561 |
| Rear Track (mm) | 1562 |
| Door Opening Type | - |
| Number of Doors | 5 |
| Number of Seats | 5 |
| Fuel Tank Capacity (L) | 61 |
| Trunk volume (L) | 505 |
| Drag Coefficient (Cd) | - |

Gearbox

| | |
|---------------------|---------------------------|
| Abbreviation | 8-gear manual integration |
|---------------------|---------------------------|

Gearbox (continued)

| | |
|--------------------------|--|
| Number of Gears | 8 |
| Transmission Type | Automatic Transmission with Manual Mode (AT) |

Chassis steering

| | |
|------------------------------|--------------------------------------|
| Drive Type | Front-engine, Front-wheel drive (FF) |
| Front Suspension Type | MacPherson independent suspension |
| Rear Suspension Type | Multi-link independent suspension |
| Power Steering Type | Electric power assistance |
| Vehicle structure | bearing type |

Seat Configuration

| | |
|--|--|
| Seat Material | • Imitation leather |
| Main seat adjustment | • Front and rear adjustment; • Backrest adjustment; • Height adjustment (4-way);○ Lumbar support (4-way) |
| Co-seat adjustment method | • Front and rear adjustment; • Backrest adjustment; • Height adjustment (4-way);○ Lumbar support (4-way) |
| Electric adjustment of driver's seat and passenger seat | Main •/Deputy • |
| Front seat functions | ○ Heating (USD 441) |
| Electric seat memory function | • Driving position |
| Front passenger seat rear adjustable buttons | - |
| Second row seat adjustment | • Front and rear adjustment; • Backrest adjustment |
| Rear seat folding | • Proportional down |
| Front/rear center armrest | Front •/Rear • |
| Rear cup holder | • |

Active safety

| | |
|---|---|
| Anti-lock Braking System (ABS) | • |
| Electronic Brakeforce Distribution (EBD/CBC) | • |
| Brake Assist System (EBA/BAS/BA) | • |

Active safety (continued)

| | |
|---|-----------------------|
| Traction Control System (ASR/TCS/TRC) | • |
| Electronic Stability Control (ESC/ESP/DSC) | • |
| Tire Pressure Monitoring System (TPMS) | • Tire pressure alarm |
| Seat Belt Reminder | • Front row |
| ISOFIX Child Seat Anchors | • |
| Lane Departure Warning System (LDWS) | - |
| Autonomous Emergency Braking (AEB) | - |
| Driver Fatigue Detection | - |
| Emergency Call System (eCall) | • |

Air conditioning/refrigerator

| | |
|--|------------------------------|
| Air conditioning temperature control method | • Automatic air conditioning |
| Rear Independent Climate Control | - |
| Rear seat air vents | • |
| Temperature zone control | • |
| Car air purifier | - |
| In-cabin PM2.5 Filter | - |

Passive safety

| | |
|--|-----------------|
| Driver/passenger airbag | Main •/Deputy • |
| Front/rear side airbags | Front •/Rear- |
| Front/rear head airbags (curtain airbags) | Front •/Rear • |
| Run-flat tires | • |

Wheel brake

| | |
|---------------------------|--------------------|
| Front Brake Type | Ventilation disc |
| Rear Brake Type | Disc |
| Parking brake type | Electronic Parking |
| Front Tire Size | 225/50 R18 |
| Rear Tire Size | 225/50 R18 |
| Spare Tire Size | None |

Audio/Interior Lighting

| | |
|----------------------------------|---|
| Speaker Brand Name | <input type="radio"/> Harman/Kardon Harman Kardon |
| Number of speakers | <ul style="list-style-type: none">• 7 horn; <input type="radio"/> 12 horn |
| Interior ambient lighting | <ul style="list-style-type: none">• Two colors |

Driving functions

| | |
|---|--------------------------------------|
| Navigation traffic information display | - |
| Lane assist | - |
| Lane Keeping Assist System | - |
| Cruise control system | <input type="radio"/> Cruise control |
| Satellite navigation system | <input type="radio"/> |
| Parking Assist | <input type="radio"/> |

Exterior lighting

| | |
|-------------------------------------|---|
| Low beam light source | <ul style="list-style-type: none">•LED |
| High beam light source | <ul style="list-style-type: none">•LED |
| LED daytime running lights | <ul style="list-style-type: none">• |
| Adaptive high and low beam | - |
| Automatic headlights | <ul style="list-style-type: none">• |
| Front fog lights | <ul style="list-style-type: none">• Halogen |
| Height-adjustable headlights | <ul style="list-style-type: none">• |
| Headlight Delay Off | <ul style="list-style-type: none">• |

Exterior mirrors

| | |
|---------------------------------|---|
| Exterior mirror function | <ul style="list-style-type: none">• Electric adjustment; • Electric folding; • Rearview mirror memory; • Rearview mirror heating; • Automatic downturning when reversing; <input type="radio"/> Automatic folding when locked; <input type="radio"/> Automatic anti-glare |
|---------------------------------|---|

Appearance/anti-theft

| | |
|--|--|
| Rim material | <ul style="list-style-type: none">• Aluminum alloy |
| Electric trunk | <ul style="list-style-type: none">• |
| Electronic engine immobilizer | <ul style="list-style-type: none">• |
| Central locking system in the car | <ul style="list-style-type: none">• |

Appearance/anti-theft (continued)

| | |
|---------------------------------------|--------------|
| Key Type | • Remote key |
| Keyless start system | • |
| Keyless entry function | ○ Front row |
| Hands-free Trunk | ○ |
| Electric trunk position memory | • |
| Roof rack | • |

Skylight/Glass

| | |
|--|---|
| Sunroof Type | • Openable panoramic sunroof |
| Front/rear electric windows | Front •/Rear • |
| One-touch window lifting function | • Full car |
| Window anti-pinch function | • |
| Car makeup mirror | • Main driver's lamp; • co-pilot's lamp |
| Rear wiper | • |
| Rain sensor wiper function | • Rainfall-sensing |

Interior and exterior color

| | |
|-----------------------|---|
| Exterior Color | Starlight Brown: #28160F; Valencia Orange: #FF660E; Gemstone Blue: #242224; Mediterranean Blue: #092A57; Cashmere Silver: #C6C1B4; Mineral White: #E7E7E7; Chestnut Copper Brown: #8A411B; Melbourne Red: #610303; Whirlwind Brown: #573E35; Snow Mountain White: #FAFAFA |
| Interior Color | Black:#000000 |

Steering wheel/interior mirror

| | |
|---|--|
| Steering Wheel Material | • Leather |
| Steering wheel position adjustment | • Manual up and down front and rear adjustment |
| Multi-function steering wheel | • |
| Heated Steering Wheel | - |
| Steering wheel memory | - |
| Trip computer display screen | • Color |

Steering wheel/interior mirror (continued)

| | |
|--|--|
| Full LCD instrument panel | - |
| Interior rearview mirror function | <ul style="list-style-type: none">• Automatic anti-glare |

Intelligent configuration

| | |
|-------------------------------|---|
| Connected Car Services | ○ |
| OTA Updates | - |

Driving Control

| | |
|-------------------------------------|--|
| Driving mode switch | <ul style="list-style-type: none">• Sport; • Economy; • Standard/Comfort |
| Automatic parking | - |
| Hill start assist | <ul style="list-style-type: none">• |
| Engine start-stop technology | <ul style="list-style-type: none">• |

Driving Hardware

| | |
|---|---|
| Front/rear parking radar | Front ○/Rear • |
| Driving Assistance Camera System | <ul style="list-style-type: none">• Reversing image |

In-car charging

| | |
|---|--|
| Multimedia/charging port | <ul style="list-style-type: none">• Type-C |
| Number of USB/Type-C ports | <ul style="list-style-type: none">• 1 in the front row/2 in the back row |
| Luggage compartment 12V power socket | <ul style="list-style-type: none">• |

Optional Package

| | |
|-------------------------|--|
| Optional Package | Comfort package (USD 588; includes: keyless entry (front door, trunk lid), including induction switch trunk lid, internal rearview mirror with automatic anti-glare function and driver's side external rearview mirror); Innovation package (USD 588; includes: front and rear parking distance alarms, automatic parking assist system, cruise control system with brake function) |
|-------------------------|--|

"●" = Standard equipment

"□" = Not available

"○" = Optional equipment.

Note: These are Chinese market vehicles. Warranty coverage is not available outside of China.