

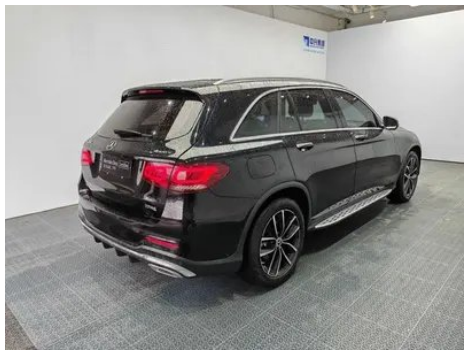
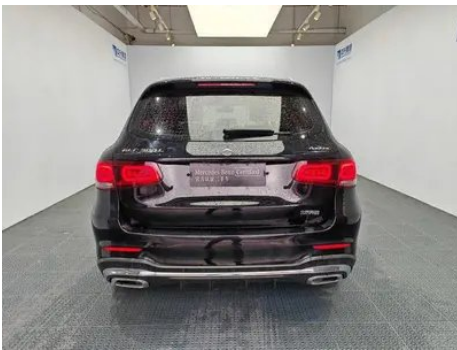
# Vehicle Detail Report

Mercedes-Benz GLC 2021 GLC 260 L 4MATIC  
Luxury type

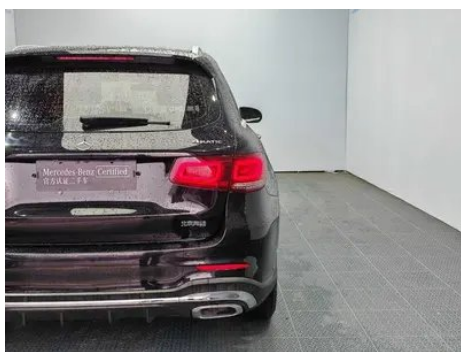
## Basic Information

Brand	Mercedes-Benz
Mileage	81,400 km
Color	Black
First Registration	2021-08-01
Transfer Count	0

## Vehicle Images







## Vehicle Condition

1. Front bumper, Signs of removal. 2. Rear bumper, Scrape, Scratch damage. 3. Left front door, Paint chip. 4. Left rear door, Scratch damage. 5. Right rear door, Scratch damage. 6. Trunk lid, Paint repair, Body panel repair. 7. Left front fender, Scratch damage. 8. Left rear quarter panel, Scratch. 9. Right rear quarter panel, Scratch damage. 10. Left headlight, Signs of removal, Replaced.

## Configuration Information

### Model Information

<b>Model Name</b>	Mercedes-Benz GLC 2021 GLC 260 L 4MATIC Luxury type
<b>Launch Date</b>	2020.11

### Basic parameters

<b>Vehicle Class</b>	Mid-size SUV
<b>Energy Type</b>	Gasoline
<b>Maximum Power (kW)</b>	145
<b>Maximum Torque (N·m)</b>	320
<b>Transmission</b>	9-gear manual integration
<b>Body Type</b>	SUV
<b>Engine</b>	2.0L 197 hp L4
<b>Dimensions (L×W×H) (mm)</b>	4764*1898*1642
<b>Official 0-100 km/h Acceleration (s)</b>	8.4
<b>Top Speed (km/h)</b>	213
<b>Curb Weight (kg)</b>	1890
<b>Maximum Gross Weight (kg)</b>	-
<b>NEDC Combined Fuel Consumption (L/100km)</b>	8.2

### engine

<b>Engine Model</b>	264 920
<b>Displacement (mL)</b>	1991
<b>Displacement (L)</b>	2.0

## engine (continued)

<b>Induction Type</b>	Turbocharging
<b>Cylinder Arrangement</b>	L
<b>Number of Cylinders</b>	4
<b>Valves per Cylinder</b>	4
<b>Valve Train</b>	DOHC
<b>Maximum Power (PS)</b>	197
<b>Max Power Speed (rpm)</b>	6100
<b>Max Torque Speed (rpm)</b>	1650-4000
<b>Maximum net power (kW)</b>	145
<b>Fuel Grade</b>	95.
<b>Fuel Delivery System</b>	Direct injection
<b>Cylinder Head Material</b>	Aluminum alloy
<b>Cylinder Block Material</b>	Aluminum alloy
<b>Engine layout</b>	Longitudinal

## Screen/System

<b>Central control color screen</b>	<ul style="list-style-type: none"><li>• Touch LCD screen</li></ul>
<b>Infotainment Screen Size</b>	<ul style="list-style-type: none"><li>• 10.25 inches</li></ul>
<b>Bluetooth/In-car Phone</b>	<ul style="list-style-type: none"><li>•</li></ul>
<b>Smartphone Integration/Mirroring</b>	<ul style="list-style-type: none"><li>• Support CarPlay;</li><li>• Support CarLife</li></ul>
<b>Voice recognition control system</b>	<ul style="list-style-type: none"><li>• Multimedia system;</li><li>• Navigation;</li><li>• Telephone;</li><li>• Air conditioning</li></ul>

## Body

<b>Length (mm)</b>	4764
<b>Width (mm)</b>	1898
<b>Height (mm)</b>	1642
<b>Wheelbase (mm)</b>	2973
<b>Front Track (mm)</b>	1614
<b>Rear Track (mm)</b>	1611
<b>Door Opening Type</b>	swing door
<b>Number of Doors</b>	5
<b>Number of Seats</b>	5
<b>Fuel Tank Capacity (L)</b>	66
<b>Trunk volume (L)</b>	-

## Body (continued)

<b>Drag Coefficient (Cd)</b>	-
<b>Approach Angle (°)</b>	23
<b>Departure Angle (°)</b>	21

## Gearbox

<b>Abbreviation</b>	9-gear manual integration
<b>Number of Gears</b>	9
<b>Transmission Type</b>	Automatic Transmission with Manual Mode (AT)

## Chassis steering

<b>Drive Type</b>	Front-engine, All-wheel drive (F-AWD)
<b>Four-wheel drive</b>	Full-time four-wheel drive
<b>Central differential structure</b>	Multi-plate clutch
<b>Front Suspension Type</b>	Multi-link independent suspension
<b>Rear Suspension Type</b>	Multi-link independent suspension
<b>Power Steering Type</b>	Electric power assistance
<b>Vehicle structure</b>	bearing type

## Seat Configuration

<b>Seat Material</b>	• Imitation leather
<b>Main seat adjustment</b>	• Front and rear adjustment; • Backrest adjustment; • Height adjustment (4-way); • Leg rest adjustment; • Lumbar support (4-way)
<b>Co-seat adjustment method</b>	• Front and rear adjustment; • Backrest adjustment; • Height adjustment (4-way); • Leg rest adjustment; • Lumbar support (4-way)
<b>Electric adjustment of driver's seat and passenger seat</b>	Main •/Deputy •
<b>Front seat functions</b>	• Heating
<b>Electric seat memory function</b>	• Driving position
<b>Front passenger seat rear adjustable buttons</b>	•
<b>Rear seat folding</b>	• Proportional down
<b>Front/rear center armrest</b>	Front •/Rear •

## Seat Configuration (continued)

<b>Rear cup holder</b>	•
<b>Second row seat functions</b>	○ Heating (USD 441)

## Active safety

<b>Anti-lock Braking System (ABS)</b>	•
<b>Electronic Brakeforce Distribution (EBD/CBC)</b>	•
<b>Brake Assist System (EBA/BAS/BA)</b>	•
<b>Traction Control System (ASR/TCS/TRC)</b>	•
<b>Electronic Stability Control (ESC/ESP/DSC)</b>	•
<b>Tire Pressure Monitoring System (TPMS)</b>	• Tire pressure display
<b>Seat Belt Reminder</b>	• Front row
<b>ISOFIX Child Seat Anchors</b>	•
<b>Lane Departure Warning System (LDWS)</b>	-
<b>Autonomous Emergency Braking (AEB)</b>	•
<b>Driver Fatigue Detection</b>	•
<b>Emergency Call System (eCall)</b>	•

## Air conditioning/refrigerator

<b>Air conditioning temperature control method</b>	• Automatic air conditioning
<b>Rear Independent Climate Control</b>	•
<b>Rear seat air vents</b>	•
<b>Temperature zone control</b>	•
<b>Car air purifier</b>	-
<b>In-cabin PM2.5 Filter</b>	○(USD 221)

## Passive safety

<b>Driver/passenger airbag</b>	Main •/Deputy •
<b>Front/rear side airbags</b>	Front •/Rear ○ Rear side airbags (USD 456)

## Passive safety (continued)

<b>Front/rear head airbags (curtain airbags)</b>	Front •/Rear •
<b>Run-flat tires</b>	•
<b>Knee airbag</b>	• Main driver knee airbag

## Wheel brake

<b>Front Brake Type</b>	Ventilation disc
<b>Rear Brake Type</b>	Ventilation disc
<b>Parking brake type</b>	Electronic Parking
<b>Front Tire Size</b>	235/55 R19
<b>Rear Tire Size</b>	235/55 R19
<b>Spare Tire Size</b>	None

## Audio/Interior Lighting

<b>Speaker Brand Name</b>	○Burmester Berlin Sound (USD 1,015)
<b>Number of speakers</b>	•7 speakers; ○13 speakers
<b>Interior ambient lighting</b>	• 64 colors

## Driving functions

<b>Navigation traffic information display</b>	•
<b>Lane assist</b>	○(USD 603)
<b>Lane Keeping Assist System</b>	-
<b>Cruise control system</b>	• Cruise control
<b>Satellite navigation system</b>	•
<b>Parking Assist</b>	•

## Exterior lighting

<b>Low beam light source</b>	•LED
<b>High beam light source</b>	•LED
<b>LED daytime running lights</b>	•
<b>Adaptive high and low beam</b>	-
<b>Automatic headlights</b>	•
<b>Height-adjustable headlights</b>	•
<b>Headlight Delay Off</b>	•

## Exterior mirrors

## Exterior mirrors (continued)

<b>Exterior mirror function</b>	<ul style="list-style-type: none"><li>• Electric adjustment;</li><li>• Electric folding;</li><li>• Rearview mirror memory;</li><li>• Rearview mirror heating;</li><li>• Automatic downturning when reversing;</li><li>• Automatic folding when locked;</li><li>• Automatic anti-glare</li></ul>
---------------------------------	---

## Appearance/anti-theft

<b>Rim material</b>	<ul style="list-style-type: none"><li>• Aluminum alloy</li></ul>
<b>Electric trunk</b>	<ul style="list-style-type: none"><li>•</li></ul>
<b>Electronic engine immobilizer</b>	<ul style="list-style-type: none"><li>•</li></ul>
<b>Central locking system in the car</b>	<ul style="list-style-type: none"><li>•</li></ul>
<b>Key Type</b>	<ul style="list-style-type: none"><li>• Remote key</li></ul>
<b>Keyless start system</b>	<ul style="list-style-type: none"><li>•</li></ul>
<b>Keyless entry function</b>	<ul style="list-style-type: none"><li>• Full car</li></ul>
<b>Appearance Kit</b>	<ul style="list-style-type: none"><li>• Sports style</li></ul>
<b>Hands-free Trunk</b>	<ul style="list-style-type: none"><li>•</li></ul>
<b>Electric trunk position memory</b>	<ul style="list-style-type: none"><li>•</li></ul>
<b>Roof rack</b>	<ul style="list-style-type: none"><li>•</li></ul>
<b>Remote start function</b>	<ul style="list-style-type: none"><li>•</li></ul>

## Skylight/Glass

<b>Sunroof Type</b>	<ul style="list-style-type: none"><li>• Sectional electric sunroof</li></ul>
<b>Front/rear electric windows</b>	Front •/Rear •
<b>One-touch window lifting function</b>	<ul style="list-style-type: none"><li>• Full car</li></ul>
<b>Window anti-pinch function</b>	<ul style="list-style-type: none"><li>•</li></ul>
<b>Car makeup mirror</b>	<ul style="list-style-type: none"><li>• Driver's side ambient light;</li><li>• Passenger-side ambient light;</li><li>• Rear-row ambient light</li></ul>
<b>Rear wiper</b>	<ul style="list-style-type: none"><li>•</li></ul>
<b>Rain sensor wiper function</b>	<ul style="list-style-type: none"><li>• Rainfall-sensing</li></ul>

## Interior and exterior color

## Interior and exterior color (continued)

<b>Exterior Color</b>	Sapphire blue:#0D2C95; Arctic white:#F4F4F4; Zircon quartz red:#B00D15; Turquoise green:#193A48; Hao Sha Silver:#D7DCDC; Ruby black:#1B100F; Graphite ash:#4E5158; Time and space silver:#ACACAE; Obsidian black:#000000; Moonlight lime:#566262
<b>Interior Color</b>	Black/coffee brown:#000000/#221F1F; Black:#000000; Black/saddle brown:#000000/#844B41; Black/cranberry red:#000000/#962A31; Magma gray/black:#323232/#000000

## Steering wheel/interior mirror

<b>Steering Wheel Material</b>	<ul style="list-style-type: none"><li>• Cortex</li></ul>
<b>Steering wheel position adjustment</b>	<ul style="list-style-type: none"><li>• Electric up and down front and rear adjustment</li></ul>
<b>Multi-function steering wheel</b>	<ul style="list-style-type: none"><li>•</li></ul>
<b>Heated Steering Wheel</b>	-
<b>Steering wheel memory</b>	<ul style="list-style-type: none"><li>•</li></ul>
<b>Trip computer display screen</b>	<ul style="list-style-type: none"><li>• Color</li></ul>
<b>Full LCD instrument panel</b>	<ul style="list-style-type: none"><li>•</li></ul>
<b>LCD instrument size</b>	<ul style="list-style-type: none"><li>• 12.3 inches</li></ul>
<b>Interior rearview mirror function</b>	<ul style="list-style-type: none"><li>• Automatic anti-glare</li></ul>
<b>HUD Head Up Digital Display</b>	○(USD 1,324)
<b>Steering Wheel Shift Paddles</b>	<ul style="list-style-type: none"><li>•</li></ul>

## Intelligent configuration

<b>Connected Car Services</b>	<ul style="list-style-type: none"><li>•</li></ul>
<b>OTA Updates</b>	-

## Driving Control

<b>Driving mode switch</b>	<ul style="list-style-type: none"><li>• Sport; • Economy; • Standard/Comfort</li></ul>
<b>Automatic parking</b>	<ul style="list-style-type: none"><li>•</li></ul>
<b>Hill start assist</b>	<ul style="list-style-type: none"><li>•</li></ul>

## Driving Control (continued)

<b>Variable suspension function</b>	• Soft and hard adjustment of suspension
<b>Variable steering ratio</b>	•
<b>Engine start-stop technology</b>	•

## Driving Hardware

<b>Front/rear parking radar</b>	Front •/Rear •
<b>Driving Assistance Camera System</b>	• Reversing image

## In-car charging

<b>Multimedia/charging port</b>	•Type-C
<b>Number of USB/Type-C ports</b>	• 2 in the front row/2 in the back row
<b>Mobile phone wireless charging function</b>	○ Front row (USD 265)
<b>Luggage compartment 12V power socket</b>	•

## Optional Package

<b>Optional Package</b>	Zhile Package (USD 1,015; Including: Burmester® Surround Stereo Sound System)
-------------------------	---

---

"●" = Standard equipment

"\_" = Not available

"○" = Optional equipment.

Note: These are Chinese market vehicles. Warranty coverage is not available outside of China.