

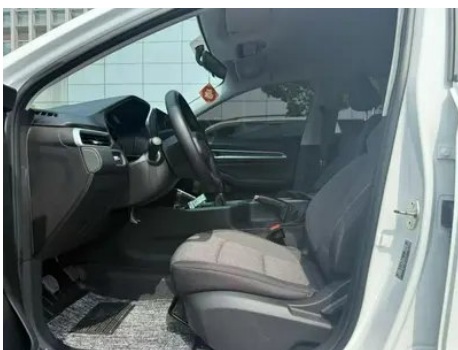
# Vehicle Detail Report

## Geely Emgrand 2025 4th Gen 1.5L Manual Longteng Edition

### Basic Information

Brand	Geely
Mileage	20,000 km
Color	White
First Registration	2025-06-01
Transfer Count	0

### Vehicle Images





## Vehicle Condition

1. Original metal body panels with factory paint.

## Configuration Information

### Model Information

<b>Model Name</b>	Geely Emgrand 2025 4th Gen 1.5L Manual Longteng Edition
<b>Launch Date</b>	2024.07

### Basic parameters

<b>Vehicle Class</b>	compact car
<b>Energy Type</b>	Gasoline
<b>Maximum Power (kW)</b>	93
<b>Maximum Torque (N·m)</b>	152
<b>Transmission</b>	5th gear manual
<b>Body Type</b>	Sedan
<b>Engine</b>	1.5L 127 horsepower L4
<b>Dimensions (L×W×H) (mm)</b>	4638*1820*1460
<b>Official 0-100 km/h Acceleration (s)</b>	-
<b>Top Speed (km/h)</b>	175
<b>Curb Weight (kg)</b>	1195
<b>Maximum Gross Weight (kg)</b>	1595
<b>WLTP Combined Fuel Consumption (L/100km)</b>	5.62

### engine

<b>Engine Model</b>	BHE15-AFD
<b>Displacement (mL)</b>	1499
<b>Displacement (L)</b>	1.5
<b>Induction Type</b>	Natural aspiration
<b>Cylinder Arrangement</b>	L

## engine (continued)

<b>Number of Cylinders</b>	4
<b>Valves per Cylinder</b>	4
<b>Valve Train</b>	DOHC
<b>Maximum Power (PS)</b>	127
<b>Max Power Speed (rpm)</b>	6300
<b>Max Torque Speed (rpm)</b>	4000-5000
<b>Maximum net power (kW)</b>	90
<b>Fuel Grade</b>	92.
<b>Fuel Delivery System</b>	Direct injection
<b>Cylinder Head Material</b>	Aluminum alloy
<b>Cylinder Block Material</b>	Aluminum alloy
<b>Engine layout</b>	Horizontal
<b>Engine-specific technologies</b>	DVVT

## Screen/System

<b>Central control color screen</b>	<ul style="list-style-type: none"><li>• Touch LCD screen</li></ul>
<b>Infotainment Screen Size</b>	<ul style="list-style-type: none"><li>• 12.3 inches</li></ul>
<b>Bluetooth/In-car Phone</b>	<ul style="list-style-type: none"><li>•</li></ul>
<b>Smartphone Integration/Mirroring</b>	<ul style="list-style-type: none"><li>• HUAWEI HiCar support</li></ul>
<b>Voice recognition control system</b>	Multimedia system Navigation • Telephone • Air conditioning Skylight
<b>In-vehicle intelligent system</b>	<ul style="list-style-type: none"><li>• Geely Galaxy OS</li></ul>
<b>Car Intelligent Chip</b>	<ul style="list-style-type: none"><li>• ECARX E02</li></ul>
<b>Vehicle system memory (GB)</b>	<ul style="list-style-type: none"><li>•6</li></ul>

## Body

<b>Length (mm)</b>	4638
<b>Width (mm)</b>	1820
<b>Height (mm)</b>	1460
<b>Wheelbase (mm)</b>	2650
<b>Front Track (mm)</b>	1549
<b>Rear Track (mm)</b>	1551
<b>Door Opening Type</b>	swing door

## Body (continued)

<b>Number of Doors</b>	4
<b>Number of Seats</b>	5
<b>Fuel Tank Capacity (L)</b>	53
<b>Trunk volume (L)</b>	-
<b>Drag Coefficient (Cd)</b>	-
<b>Approach Angle (°)</b>	14
<b>Departure Angle (°)</b>	15
<b>Minimum Turning Radius (m)</b>	5.5

## Gearbox

<b>Abbreviation</b>	5th gear manual
<b>Number of Gears</b>	5
<b>Transmission Type</b>	Manual Transmission (MT)

## Chassis steering

<b>Drive Type</b>	Front-engine, Front-wheel drive (FF)
<b>Front Suspension Type</b>	MacPherson independent suspension
<b>Rear Suspension Type</b>	Torsion beam non-independent suspension
<b>Power Steering Type</b>	Electric power assistance
<b>Vehicle structure</b>	bearing type

## Seat Configuration

<b>Seat Material</b>	<ul style="list-style-type: none"><li>• Imitation leather</li></ul>
<b>Main seat adjustment</b>	<ul style="list-style-type: none"><li>• Front and rear adjustment;</li><li>• Backrest adjustment;</li><li>• Height adjustment (2-way)</li></ul>
<b>Co-seat adjustment method</b>	<ul style="list-style-type: none"><li>• Front and rear adjustment;</li><li>• Backrest adjustment</li></ul>
<b>Electric adjustment of driver's seat and passenger seat</b>	-
<b>Front passenger seat rear adjustable buttons</b>	-
<b>Rear seat folding</b>	<ul style="list-style-type: none"><li>• Proportional down</li></ul>
<b>Front/rear center armrest</b>	Front •/Rear-
<b>Rear cup holder</b>	-

## Active safety

## Active safety (continued)

<b>Anti-lock Braking System (ABS)</b>	•
<b>Electronic Brakeforce Distribution (EBD/CBC)</b>	•
<b>Brake Assist System (EBA/BAS/BA)</b>	•
<b>Traction Control System (ASR/TCS/TRC)</b>	•
<b>Electronic Stability Control (ESC/ESP/DSC)</b>	•
<b>Tire Pressure Monitoring System (TPMS)</b>	• Tire pressure alarm
<b>Seat Belt Reminder</b>	• Main driving position
<b>ISOFIX Child Seat Anchors</b>	•
<b>Lane Departure Warning System (LDWS)</b>	-
<b>Autonomous Emergency Braking (AEB)</b>	-
<b>Driver Fatigue Detection</b>	-

## Air conditioning/refrigerator

<b>Air conditioning temperature control method</b>	• Manual air conditioning
<b>Rear Independent Climate Control</b>	-
<b>Rear seat air vents</b>	-
<b>Temperature zone control</b>	-
<b>Car air purifier</b>	-
<b>In-cabin PM2.5 Filter</b>	•

## Passive safety

<b>Driver/passenger airbag</b>	Main •/Deputy •
<b>Front/rear side airbags</b>	-
<b>Front/rear head airbags (curtain airbags)</b>	-

## Wheel brake

<b>Front Brake Type</b>	Ventilation disc
<b>Rear Brake Type</b>	Disc
<b>Parking brake type</b>	handbrake
<b>Front Tire Size</b>	195/55 R16

## Wheel brake (continued)

<b>Rear Tire Size</b>	195/55 R16
<b>Spare Tire Size</b>	Not full-size
<b>Spare tire placement</b>	In the trunk

## Audio/Interior Lighting

<b>Number of speakers</b>	• 4 speakers
---------------------------	--------------

## Driving functions

<b>Navigation traffic information display</b>	•
<b>Lane assist</b>	-
<b>Lane Keeping Assist System</b>	-
<b>Satellite navigation system</b>	•
<b>Map Brand</b>	• Gaud
<b>Parking Assist</b>	-

## Exterior lighting

<b>Low beam light source</b>	• Halogen
<b>High beam light source</b>	• Halogen
<b>LED daytime running lights</b>	•
<b>Adaptive high and low beam</b>	-
<b>Automatic headlights</b>	•
<b>Height-adjustable headlights</b>	•
<b>Headlight Delay Off</b>	•

## Exterior mirrors

<b>Exterior mirror function</b>	• Electric adjustment; • Mirror heating
---------------------------------	---

## Appearance/anti-theft

<b>Rim material</b>	• Aluminum alloy
<b>Electronic engine immobilizer</b>	•
<b>Central locking system in the car</b>	•
<b>Key Type</b>	• Remote key
<b>Keyless start system</b>	-

## Skylight/Glass

## Skylight/Glass (continued)

<b>Sunroof Type</b>	○ Electric sunroof
<b>Front/rear electric windows</b>	Front •/Rear •
<b>Window anti-pinch function</b>	-
<b>Car makeup mirror</b>	• Main driving position; • First officer
<b>Rear wiper</b>	-
<b>Rain sensor wiper function</b>	• Speed induction type

## Interior and exterior color

<b>Exterior Color</b>	Smoke-wave blue #4C6289 Ink Wash White #E8F1F7 Deva Ash #868686
<b>Interior Color</b>	Black:#000000

## Steering wheel/interior mirror

<b>Steering Wheel Material</b>	• Cortex
<b>Steering wheel position adjustment</b>	• Manual up and down adjustment
<b>Multi-function steering wheel</b>	•
<b>Heated Steering Wheel</b>	-
<b>Steering wheel memory</b>	-
<b>Trip computer display screen</b>	• Color
<b>Full LCD instrument panel</b>	-
<b>LCD instrument size</b>	• 12.3 inches
<b>Interior rearview mirror function</b>	• Manual anti-glare
<b>Gear shifting</b>	• Mechanical gear shift

## Intelligent configuration

<b>Connected Car Services</b>	•
<b>OTA Updates</b>	-
<b>4G/5G Network</b>	•4G
<b>Wi-Fi hotspots</b>	•

## Driving Control

<b>Automatic parking</b>	-
<b>Hill start assist</b>	•

## Driving Hardware

## Driving Hardware (continued)

<b>Front/rear parking radar</b>	Front-/Rear •
<b>Driving Assistance Camera System</b>	• Reversing image
<b>Number of cameras</b>	• 1
<b>Number of ultrasonic radars</b>	• 3

## In-car charging

<b>Multimedia/charging port</b>	•USB
<b>Number of USB/Type-C ports</b>	• 1 front row/1 back row

---

"●" = Standard equipment

"-" = Not available

"○" = Optional equipment.

Note: These are Chinese market vehicles. Warranty coverage is not available outside of China.