

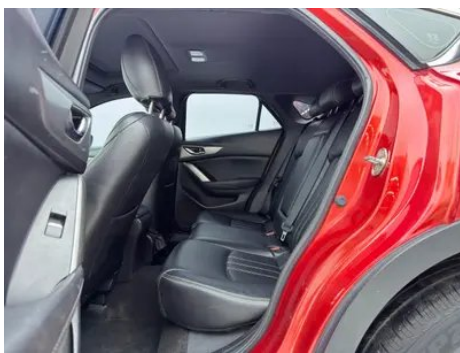
Vehicle Detail Report

Mazda CX-4 2018 2.0L Automatic two-wheel drive blue sky vitality version China V

Basic Information

Brand	Mazda
Mileage	92,000 km
Color	Red
First Registration	2018-10-01
Transfer Count	2

Vehicle Images





Vehicle Condition

1. Right upper side rail, Paint repair. 2. Inner side of left B-pillar, Scratch. 3. Left rear quarter panel, Deformation. 4. Right rear quarter panel, Paint repair, Body panel repair.

Configuration Information

Model Information

Model Name	Mazda CX-4 2018 2.0L Automatic Two-Drive Blue Sky Vigor Edition National V
Launch Date	2017.08

Basic parameters

Vehicle Class	Compact SUV
Energy Type	Gasoline
Maximum Power (kW)	116
Maximum Torque (N·m)	202
Transmission	6-speed manual integration
Body Type	SUV
Engine	2.0L 158 horsepower L4

Basic parameters (continued)

Dimensions (L×W×H) (mm)	4633*1840*1530
Official 0-100 km/h Acceleration (s)	-
Top Speed (km/h)	192
Curb Weight (kg)	1450
Maximum Gross Weight (kg)	-
NEDC Combined Fuel Consumption (L/100km)	6.3

engine

Engine Model	PE
Displacement (mL)	1998
Displacement (L)	2.0
Induction Type	Natural aspiration
Cylinder Arrangement	L
Number of Cylinders	4
Valves per Cylinder	4
Compression Ratio	13
Valve Train	DOHC
Maximum Power (PS)	158
Max Power Speed (rpm)	6400
Max Torque Speed (rpm)	4000
Maximum net power (kW)	-
Fuel Grade	92.
Fuel Delivery System	Direct injection
Cylinder Head Material	Aluminum alloy
Cylinder Block Material	Aluminum alloy
Engine layout	Horizontal
Engine-specific technologies	Dual S-VT

Screen/System

Bluetooth/In-car Phone	-
-------------------------------	---

Body

Length (mm)	4633
Width (mm)	1840

Body (continued)

Height (mm)	1530
Wheelbase (mm)	2700
Front Track (mm)	1584
Rear Track (mm)	1586
Door Opening Type	-
Number of Doors	5
Number of Seats	5
Fuel Tank Capacity (L)	51
Trunk volume (L)	400
Drag Coefficient (Cd)	-

Gearbox

Abbreviation	6-speed manual integration
Number of Gears	6
Transmission Type	Automatic Transmission with Manual Mode (AT)

Chassis steering

Drive Type	Front-engine, Front-wheel drive (FF)
Front Suspension Type	MacPherson independent suspension
Rear Suspension Type	E-type multi-link independent suspension
Power Steering Type	Electric power assistance
Vehicle structure	bearing type

Seat Configuration

Seat Material	<ul style="list-style-type: none">• Fabric
Main seat adjustment	<ul style="list-style-type: none">• Front and rear adjustment;• Backrest adjustment;• Height adjustment (2-way)
Co-seat adjustment method	<ul style="list-style-type: none">• Front and rear adjustment;• Backrest adjustment
Electric adjustment of driver's seat and passenger seat	-
Front passenger seat rear adjustable buttons	-
Rear seat folding	<ul style="list-style-type: none">• Proportional down
Front/rear center armrest	Front •/Rear •
Rear cup holder	<ul style="list-style-type: none">•

Active safety

Anti-lock Braking System (ABS)	•
Electronic Brakeforce Distribution (EBD/CBC)	•
Brake Assist System (EBA/BAS/BA)	•
Traction Control System (ASR/TCS/TRC)	•
Electronic Stability Control (ESC/ESP/DSC)	•
Seat Belt Reminder	• Front row
ISOFIX Child Seat Anchors	•
Lane Departure Warning System (LDWS)	-
Autonomous Emergency Braking (AEB)	-
Driver Fatigue Detection	-

Air conditioning/refrigerator

Air conditioning temperature control method	• Manual air conditioning
Rear Independent Climate Control	-
Rear seat air vents	-
Temperature zone control	-
Car air purifier	-
In-cabin PM2.5 Filter	-

Passive safety

Driver/passenger airbag	Main •/Deputy •
Front/rear side airbags	Front •/Rear-
Front/rear head airbags (curtain airbags)	-

Wheel brake

Front Brake Type	Ventilation disc
Rear Brake Type	Disc
Parking brake type	Electronic Parking
Front Tire Size	225/65 R17
Rear Tire Size	225/65 R17

Wheel brake (continued)

Spare Tire Size	Not full-size
------------------------	---------------

Audio/Interior Lighting

Number of speakers	• 4 speakers
---------------------------	--------------

Driving functions

Navigation traffic information display	-
Lane assist	-
Lane Keeping Assist System	-
Satellite navigation system	-
Parking Assist	-

Exterior lighting

Low beam light source	•LED
High beam light source	•LED
LED daytime running lights	-
Adaptive high and low beam	-
Automatic headlights	-
Height-adjustable headlights	•
Headlight Delay Off	•

Exterior mirrors

Exterior mirror function	• Electric adjustment
---------------------------------	-----------------------

Appearance/anti-theft

Rim material	• Aluminum alloy
Electric trunk	-
Electronic engine immobilizer	•
Central locking system in the car	•
Key Type	• Remote key
Keyless start system	•

Skylight/Glass

Sunroof Type	• Electric sunroof
Front/rear electric windows	Front •/Rear •

Skylight/Glass (continued)

One-touch window lifting function	<ul style="list-style-type: none">• Driving position
Window anti-pinch function	<ul style="list-style-type: none">•
Car makeup mirror	<ul style="list-style-type: none">• Main driving position; • First officer
Rear wiper	<ul style="list-style-type: none">•

Interior and exterior color

Exterior Color	Soul moving red:#C01C23; Phantom silver:#D3D5D8; Extreme night black:#000000; Crystal diamond ash:#B1B1B1; Interstellar blue:#648AA3; Pearlescent white:#FFFFFF; Purple sandalwood:#3F2831
Interior Color	Black:#000000

Steering wheel/interior mirror

Steering Wheel Material	<ul style="list-style-type: none">• Plastic
Steering wheel position adjustment	<ul style="list-style-type: none">• Manual up and down front and rear adjustment
Multi-function steering wheel	<ul style="list-style-type: none">•
Heated Steering Wheel	-
Steering wheel memory	-
Trip computer display screen	<ul style="list-style-type: none">• Monochrome
Full LCD instrument panel	-
Interior rearview mirror function	<ul style="list-style-type: none">• Manual anti-glare

Intelligent configuration

Connected Car Services	-
OTA Updates	-

Driving Control

Automatic parking	<ul style="list-style-type: none">•
Hill start assist	<ul style="list-style-type: none">•
Engine start-stop technology	<ul style="list-style-type: none">•

Driving Hardware

Front/rear parking radar	Front-/Rear •
---------------------------------	---------------

In-car charging

In-car charging (continued)

Multimedia/charging port	•USB;•AUX
Number of USB/Type-C ports	• 1 in the front row
Luggage compartment 12V power socket	•

"●" = Standard equipment

"_" = Not available

"○" = Optional equipment.

Note: These are Chinese market vehicles. Warranty coverage is not available outside of China.