

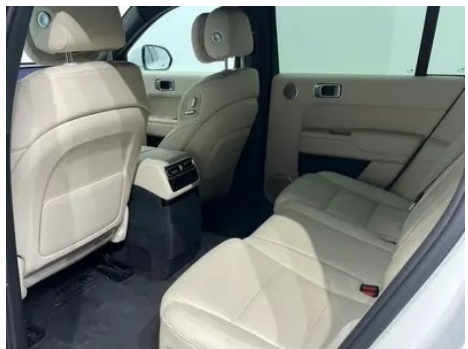
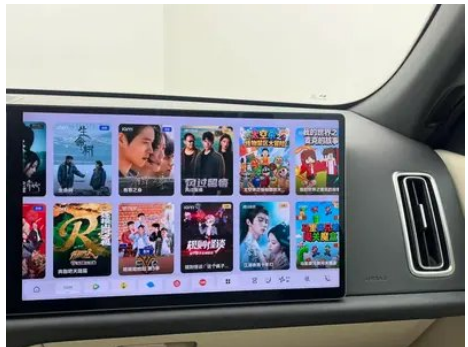
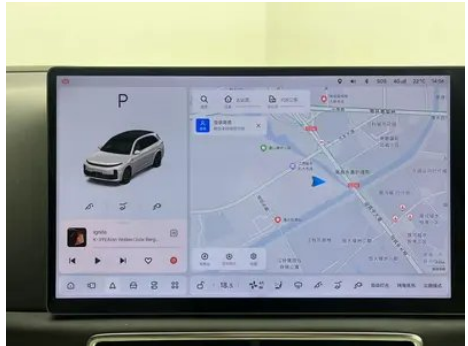
Vehicle Detail Report

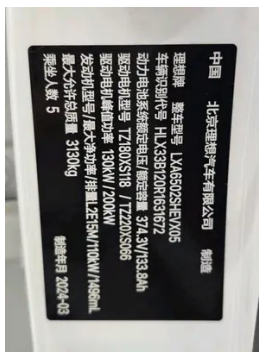
Li Auto L7 2024 Ultra version

Basic Information

Brand	Li Auto
Mileage	17,600 km
Color	White
First Registration	2024-03-01
Transfer Count	1

Vehicle Images







Vehicle Condition

1. Left rocker panel, Scratch damage. 2. Left front fender structure, Deformation.

Configuration Information

Model Information

Model Name	Li Auto L7 2024 Ultra
Launch Date	2024.03

Basic parameters

Vehicle Class	Mid-size and large SUVs
Energy Type	Extended Range Electric Vehicle (EREV)
Maximum Power (kW)	113
Maximum Torque (N·m)	-
Transmission	Electric vehicle single speed gearbox
Body Type	SUV
Engine	Extended range 154 horsepower
Dimensions (L×W×H) (mm)	5050*1995*1750
Official 0-100 km/h Acceleration (s)	5.3
Top Speed (km/h)	180
Curb Weight (kg)	2500
Maximum Gross Weight (kg)	3130
Fast Charging Time (h)	0.42
Slow Charging Time (h)	7.9
Electric Motor (PS)	449
Fast Charging Range (%)	20-80
Electricity Consumption in Fuel Equivalent (L/100km)	2.58

Basic parameters (continued)

WLTC Electric Range (km)	240
Fuel Consumption with Depleted Battery (L/100km)	7.4
CLTC Electric Range (km)	286
Battery slow charging capacity range (%)	0-100

engine

Engine Model	L2E15M
Displacement (mL)	1496
Displacement (L)	1.5
Induction Type	Turbocharging
Cylinder Arrangement	L
Number of Cylinders	4
Valves per Cylinder	4
Valve Train	DOHC
Maximum Power (PS)	154
Max Power Speed (rpm)	-
Max Torque Speed (rpm)	-
Maximum net power (kW)	110
Fuel Grade	95.
Fuel Delivery System	Direct injection
Cylinder Head Material	Aluminum alloy
Cylinder Block Material	Aluminum alloy
Engine layout	Horizontal

Electric Motor

Motor Type	Permanent magnet/synchronous
Total Electric Motor Power (kW)	330
Total Electric Motor Torque (N·m)	620
Front Electric Motor Max Power (kW)	130
Front Electric Motor Max Torque (N·m)	220
System total power (kW)	330

Electric Motor (continued)

System comprehensive torque (N·m)	620
Number of drive motors	Dual motors
Motor Layout	Front-mounted Rear-mounted
Battery Type	Ternary lithium battery
Battery Capacity (kWh)	52.3
Total Electric Motor Power (PS)	449
Rear Electric Motor Max Power (kW)	200
Rear Electric Motor Max Torque (N·m)	400
Battery Cell Brand	Ningde Times
Battery Cooling System	Liquid cooling
Power consumption per 100 kilometers (kWh/100km)	22.8
Fast charging function	Support
WLTC comprehensive range (km)	1185
Slow charging port location	Rear right side of the car
System comprehensive power (Ps)	449
Rear motor model	TZ220XS066
Fast charging port location	Rear right side of the car
External AC discharge power (kW)	3.5
Minimum allowable value of external discharge (%)	20
Front motor model	TZ180XS008
Fast Charging Power (kW)	90
Battery unique technology	Using flame retardant materials and thermal runaway protection technology
CLTC comprehensive endurance (km)	1421

Screen/System

Screen/System (continued)

Central control color screen	<ul style="list-style-type: none">• Touch LCD screen
Infotainment Screen Size	<ul style="list-style-type: none">• 15.7 inches
Bluetooth/In-car Phone	<ul style="list-style-type: none">•
Voice recognition control system	<ul style="list-style-type: none">• Multimedia system;• Navigation;• Telephone;• Air conditioning;• Windows;• Seat heating;• Seat ventilation;• Seat massage
Voice wake-up recognition by region	<ul style="list-style-type: none">• Four areas
Rear LCD screen	<ul style="list-style-type: none">•
Vehicle system storage (GB)	<ul style="list-style-type: none">•128
App Store	<ul style="list-style-type: none">•
Central control screen type	<ul style="list-style-type: none">•LCD
Central control screen resolution	<ul style="list-style-type: none">•3K
Central control screen pixel density	<ul style="list-style-type: none">•210PPI
Passenger entertainment screen size	<ul style="list-style-type: none">• 15.7 inches
Passenger screen type	<ul style="list-style-type: none">•LCD
Passenger screen resolution	<ul style="list-style-type: none">•3K
Passenger screen pixel density	<ul style="list-style-type: none">•210PPI
Voice assistant wake-up word	<ul style="list-style-type: none">• Ideal classmate
Voice wake-up word-free	<ul style="list-style-type: none">•
Continuous speech recognition	<ul style="list-style-type: none">•
See and Say	<ul style="list-style-type: none">•
Car Intelligent Chip	<ul style="list-style-type: none">• Qualcomm Snapdragon 8295P
Multi-finger flying screen control	<ul style="list-style-type: none">•
Vehicle system memory (GB)	<ul style="list-style-type: none">•32
Rear multimedia control	<ul style="list-style-type: none">•
Rear LCD screen size	<ul style="list-style-type: none">• 15.7 inches

Screen/System (continued)

Number of rear multimedia screens	• 1
Rear LCD screen type	•LCD
Rear LCD screen resolution	•3K
Gesture Control	•
Voiceprint Recognition	•

Body

Length (mm)	5050
Width (mm)	1995
Height (mm)	1750
Wheelbase (mm)	3005
Front Track (mm)	1725
Rear Track (mm)	1741
Door Opening Type	swing door
Number of Doors	5
Number of Seats	5
Fuel Tank Capacity (L)	65
Trunk volume (L)	801
Drag Coefficient (Cd)	-
Approach Angle (°)	19
Departure Angle (°)	21

Gearbox

Abbreviation	Electric vehicle single speed gearbox
Number of Gears	1
Transmission Type	Fixed Gear Ratio Transmission

Chassis steering

Drive Type	Dual-motor All-wheel Drive
Four-wheel drive	Electric four-wheel drive
Front Suspension Type	Double wishbone independent suspension
Rear Suspension Type	Five-link independent suspension
Power Steering Type	Electric power assistance
Vehicle structure	bearing type

Seat Configuration

Seat Configuration (continued)

Seat Material	<ul style="list-style-type: none">• Leather
Main seat adjustment	<ul style="list-style-type: none">• Front and rear adjustment;• Backrest adjustment;• Height adjustment (4-way);• Lumbar support (4-way)
Co-seat adjustment method	<ul style="list-style-type: none">• Front and rear adjustment;• Backrest adjustment;• Height adjustment (4-way);• Lumbar support (4-way)
Electric adjustment of driver's seat and passenger seat	Main •/Deputy •
Front seat functions	<ul style="list-style-type: none">• Heating;• Ventilation;• Massage
Electric seat memory function	<ul style="list-style-type: none">• driving position;• co-pilot position
Front passenger seat rear adjustable buttons	<ul style="list-style-type: none">•
Second row seat adjustment	<ul style="list-style-type: none">• Backrest adjustment
Rear seat folding	<ul style="list-style-type: none">• Proportional down
Front/rear center armrest	Front •/Rear •
Rear cup holder	<ul style="list-style-type: none">•
Second row seat functions	<ul style="list-style-type: none">• Heating;• Ventilation;• Massage
Electric folding rear seats	<ul style="list-style-type: none">•
Second row seats electrically adjustable	<ul style="list-style-type: none">•

Active safety

Anti-lock Braking System (ABS)	<ul style="list-style-type: none">•
Electronic Brakeforce Distribution (EBD/CBC)	<ul style="list-style-type: none">•
Brake Assist System (EBA/BAS/BA)	<ul style="list-style-type: none">•
Traction Control System (ASR/TCS/TRC)	<ul style="list-style-type: none">•
Electronic Stability Control (ESC/ESP/DSC)	<ul style="list-style-type: none">•
Tire Pressure Monitoring System (TPMS)	<ul style="list-style-type: none">• Tire pressure display
Seat Belt Reminder	<ul style="list-style-type: none">• Full vehicle

Active safety (continued)

ISOFIX Child Seat Anchors	•
Lane Departure Warning System (LDWS)	•
Autonomous Emergency Braking (AEB)	•
Driver Fatigue Detection	•
Forward Collision Warning (FCW)	•
Rear Collision Warning	•
Low Speed Alert	•
Emergency Call System (eCall)	•
Built-in Dashcam	•
Door Opening Warning (DOW)	•
Sentry Mode	•

Air conditioning/refrigerator

Air conditioning temperature control method	• Automatic air conditioning
Rear Independent Climate Control	•
Rear seat air vents	•
Temperature zone control	•
Car air purifier	•
In-cabin PM2.5 Filter	•
In-car Refrigerator	•
Negative ion generator	•
Air quality monitoring	•

Passive safety

Driver/passenger airbag	Main •/Deputy •
Front/rear side airbags	Front •/Rear •
Front/rear head airbags (curtain airbags)	Front •/Rear •
Front center airbag	•

Wheel brake

Front Brake Type	Ventilation disc
Rear Brake Type	Ventilation disc

Wheel brake (continued)

Parking brake type	Electronic Parking
Front Tire Size	265/45 R21
Rear Tire Size	265/45 R21
Spare Tire Size	-

Audio/Interior Lighting

Number of speakers	<ul style="list-style-type: none">• 21 Horn
Interior ambient lighting	<ul style="list-style-type: none">• 256 color
Touch reading light	<ul style="list-style-type: none">•
Dolby Atmos	<ul style="list-style-type: none">•

Driving functions

Navigation traffic information display	<ul style="list-style-type: none">•
Lane assist	<ul style="list-style-type: none">•
Lane Keeping Assist System	<ul style="list-style-type: none">•
Cruise control system	<ul style="list-style-type: none">• Full speed adaptive cruise
Satellite navigation system	<ul style="list-style-type: none">•
Driving assistance level	<ul style="list-style-type: none">• L2
Rear Cross Traffic Alert	<ul style="list-style-type: none">•
Lane centering	<ul style="list-style-type: none">•
Road traffic sign recognition	<ul style="list-style-type: none">•
Map Brand	<ul style="list-style-type: none">• Gaud
Remote Parking	<ul style="list-style-type: none">•
Driver assistance systems	<ul style="list-style-type: none">• Ideal AD Max
High-precision map	<ul style="list-style-type: none">•
Remote Summon	<ul style="list-style-type: none">•
Hands-off detection	<ul style="list-style-type: none">•
Memory Parking	<ul style="list-style-type: none">•
Traffic light recognition	<ul style="list-style-type: none">•
Start reminder	<ul style="list-style-type: none">•
Parking Assist	<ul style="list-style-type: none">•
Lane Change Assist	<ul style="list-style-type: none">•
Automatic Ramp Entry/Exit Assist	<ul style="list-style-type: none">•

Driving functions (continued)

Highway sections	<ul style="list-style-type: none">• Urban sections;• Expressway sections
-------------------------	---

Exterior lighting

Low beam light source	<ul style="list-style-type: none">• LED
High beam light source	<ul style="list-style-type: none">• LED
LED daytime running lights	<ul style="list-style-type: none">•
Adaptive high and low beam	<ul style="list-style-type: none">•
Automatic headlights	<ul style="list-style-type: none">•
Height-adjustable headlights	<ul style="list-style-type: none">•
Headlight Delay Off	<ul style="list-style-type: none">•
Turn signal lamp	<ul style="list-style-type: none">•

Exterior mirrors

Exterior mirror function	<ul style="list-style-type: none">• Electric adjustment;• Electric folding;• Rearview mirror memory;• Rearview mirror heating;• Automatic downturning when reversing;• Automatic folding when locked;• Automatic anti-glare
---------------------------------	---

Appearance/anti-theft

Rim material	<ul style="list-style-type: none">• Aluminum alloy
Electric trunk	<ul style="list-style-type: none">•
Electronic engine immobilizer	<ul style="list-style-type: none">•
Central locking system in the car	<ul style="list-style-type: none">•
Key Type	<ul style="list-style-type: none">• Remote key;• Bluetooth key
Keyless start system	<ul style="list-style-type: none">•
Keyless entry function	<ul style="list-style-type: none">• Full vehicle
Hands-free Trunk	<ul style="list-style-type: none">•
Electric trunk position memory	<ul style="list-style-type: none">•
Remote start function	<ul style="list-style-type: none">•
Battery preheating	<ul style="list-style-type: none">•
Active closed grille	<ul style="list-style-type: none">•
Electric door closing	<ul style="list-style-type: none">• Full vehicle

Appearance/anti-theft (continued)

Hidden electric door handle	•
Discharge to the outside	•
Side pedals	○ Electric (USD 1,471)

Skylight/Glass

Sunroof Type	• Sectional unopenable skylight
Front/rear electric windows	Front •/Rear •
One-touch window lifting function	• Full vehicle
Window anti-pinch function	•
Car makeup mirror	• Main driver's lamp; • co-pilot's lamp
Rear wiper	•
Rain sensor wiper function	• Rainfall-sensing
Rear side privacy glass	•
Side window multi-layer soundproof glass	• Front row; • Rear row

Interior and exterior color

Exterior Color	Silver Metallic #C7C7C7 Baby Blue Special Edition Pearl Paint #A7C7F0 Black Metallic #1E1E1E Green special edition pearl paint #6C877C White pearl paint #FFFFFF gray metallic #A4A8AE
Interior Color	Black/White:#000000/#DAD6CF; Black/Orange:#000000/#C0674A; Black:#000000

Steering wheel/interior mirror

Steering Wheel Material	• Leather
Steering wheel position adjustment	• Electric up and down front and rear adjustment
Multi-function steering wheel	•
Heated Steering Wheel	•
Steering wheel memory	•
Trip computer display screen	• Color
Full LCD instrument panel	•

Steering wheel/interior mirror (continued)

LCD instrument size	• 4.82 inches
Interior rearview mirror function	• Automatic anti-glare
Gear shifting	• Electronic gear shift
HUD Head Up Digital Display	•
HUD head up size	• 13.35 inches

Intelligent configuration

Connected Car Services	•
OTA Updates	•
4G/5G Network	•5G
Mobile APP remote function	• Door control; • Window control; • Vehicle startup; • Charging management; • Air conditioning control; • Steering wheel heating; • Seat heating; • Seat ventilation; • Vehicle condition inquiry/diagnosis; • Vehicle location/car search; • Owner service (find charging piles, gas stations, parking lots, etc.); • Appointment maintenance/repair
Wi-Fi hotspots	•
In-vehicle Biometric Monitoring	•
Car KTV	•

Driving Control

Driving mode switch	• Sport; • Standard/Comfort; • Off-road; • Snow
Automatic parking	•
Steep slope descent	•
Hill start assist	•
Energy recovery system	•
Variable suspension function	• Suspension damping adjustment; • Suspension height adjustment
Air Suspension	•
Magic Carpet Intelligent Suspension	•

Driving Hardware

Front/rear parking radar	Front •/Rear •
Driving Assistance Camera System	• 360-degree panoramic image

Driving Hardware (continued)

Front perception camera	• Binocular
Number of cameras	• 11
Number of ultrasonic radars	• 12
Transparent chassis/540-degree imaging	•
Millimeter wave radar quantity	• 1
Assisted driving chip	• 2 Nvidia Orin-X
Total chip computing power	•508 TOPS
LiDAR Brand	•HESAI Technology
LiDAR Model	•AT128
Number of LiDARs	• 1
Laser radar line number	• 128 line
Number of LiDAR point clouds	• 1.53 million/sec
Number of cameras in the car	• 2
Front perception camera pixels	•USD 1,176,471
Environmental awareness camera pixels	•USD 1,176,471;•USD 294,118
Surround view camera pixels	•USD 441,176
Laser radar 10% reflectivity detection distance	• 200 m

In-car charging

Multimedia/charging port	•Type-C
Number of USB/Type-C ports	• 2 in the front row/2 in the back row
Mobile phone wireless charging function	• Front row
220V/230V power supply	•
Luggage compartment 12V power socket	•
USB/Type-C maximum charging power	•60W

In-car charging (continued)

Mobile phone wireless charging power

•50W

"●" = Standard equipment

"-" = Not available

"○" = Optional equipment.

Note: These are Chinese market vehicles. Warranty coverage is not available outside of China.