

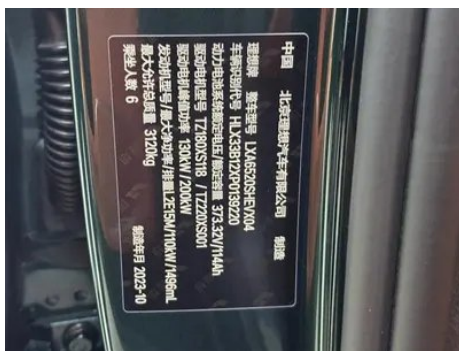
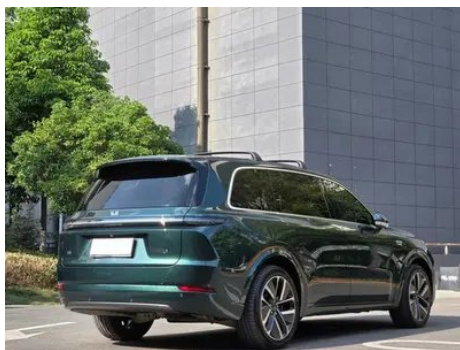
# Vehicle Detail Report

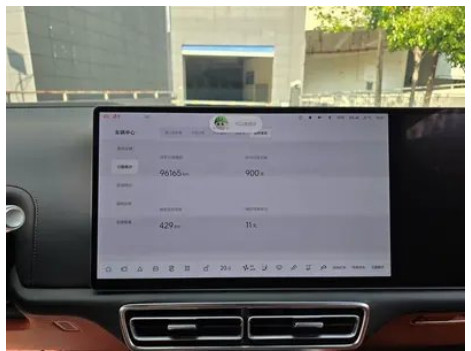
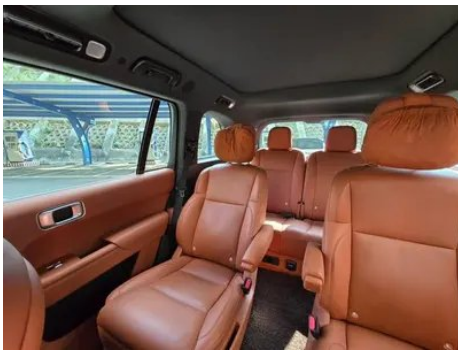
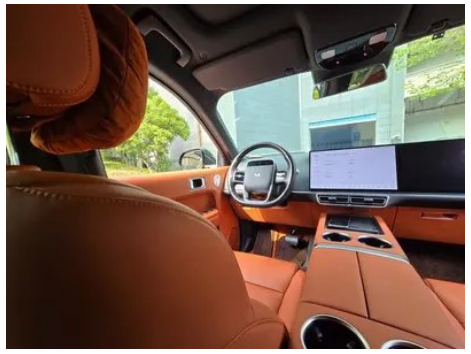
## Li Auto L9 2023 Pro version

### Basic Information

Brand	Li Auto
Mileage	96,000 km
Color	Green
First Registration	2023-11-01
Transfer Count	0

### Vehicle Images





## Vehicle Condition

1. Left rocker panel exterior trim, Scratch damage. 2. Right rocker panel exterior trim, Scratch damage.

## Configuration Information

### Model Information

<b>Model Name</b>	Li Auto L9 2023 Pro
<b>Launch Date</b>	2023.08

### Basic parameters

<b>Vehicle Class</b>	Large SUV
<b>Energy Type</b>	Extended Range Electric Vehicle (EREV)
<b>Maximum Power (kW)</b>	113

## Basic parameters (continued)

<b>Maximum Torque (N·m)</b>	-
<b>Transmission</b>	Electric vehicle single speed gearbox
<b>Body Type</b>	SUV
<b>Engine</b>	Extended range 154 horsepower
<b>Dimensions (L×W×H) (mm)</b>	5218*1998*1800
<b>Official 0-100 km/h Acceleration (s)</b>	5.3
<b>Top Speed (km/h)</b>	180
<b>Curb Weight (kg)</b>	2520
<b>Maximum Gross Weight (kg)</b>	3120
<b>Fast Charging Time (h)</b>	0.5
<b>Slow Charging Time (h)</b>	6.5
<b>Electric Motor (PS)</b>	449
<b>Fast Charging Range (%)</b>	20-80
<b>Electricity Consumption in Fuel Equivalent (L/100km)</b>	2.51
<b>WLTC Electric Range (km)</b>	175
<b>Fuel Consumption with Depleted Battery (L/100km)</b>	7.8
<b>WLTP Combined Fuel Consumption (L/100km)</b>	0.86
<b>CLTC Electric Range (km)</b>	215
<b>Battery slow charging capacity range (%)</b>	0-100

## engine

<b>Engine Model</b>	L2E15M
<b>Displacement (mL)</b>	1496
<b>Displacement (L)</b>	1.5
<b>Induction Type</b>	Turbocharging
<b>Cylinder Arrangement</b>	L
<b>Number of Cylinders</b>	4
<b>Valves per Cylinder</b>	4
<b>Valve Train</b>	DOHC

## engine (continued)

<b>Maximum Power (PS)</b>	154
<b>Max Power Speed (rpm)</b>	-
<b>Max Torque Speed (rpm)</b>	-
<b>Maximum net power (kW)</b>	110
<b>Fuel Grade</b>	95.
<b>Fuel Delivery System</b>	Direct injection
<b>Cylinder Head Material</b>	Aluminum alloy
<b>Cylinder Block Material</b>	Aluminum alloy
<b>Engine layout</b>	Horizontal

## Electric Motor

<b>Motor Type</b>	Permanent magnet/synchronous
<b>Total Electric Motor Power (kW)</b>	330
<b>Total Electric Motor Torque (N·m)</b>	620
<b>Front Electric Motor Max Power (kW)</b>	130
<b>Front Electric Motor Max Torque (N·m)</b>	220
<b>System total power (kW)</b>	330
<b>System comprehensive torque (N·m)</b>	620
<b>Number of drive motors</b>	Dual motors
<b>Motor Layout</b>	Front-mounted Rear-mounted
<b>Battery Type</b>	Ternary lithium battery
<b>Battery Capacity (kWh)</b>	42.6
<b>Total Electric Motor Power (PS)</b>	449
<b>Rear Electric Motor Max Power (kW)</b>	200
<b>Rear Electric Motor Max Torque (N·m)</b>	400
<b>Battery Cell Brand</b>	Ningde Times
<b>Battery Cooling System</b>	Liquid cooling
<b>Power consumption per 100 kilometers (kWh/100km)</b>	22.2
<b>Fast charging function</b>	Support

## Electric Motor (continued)

<b>WLTC comprehensive range (km)</b>	1100
<b>Slow charging port location</b>	Rear right side of the car
<b>System comprehensive power (Ps)</b>	449
<b>Rear motor model</b>	TZ220XS066
<b>Fast charging port location</b>	Rear right side of the car
<b>External AC discharge power (kW)</b>	3.5
<b>Minimum allowable value of external discharge (%)</b>	20
<b>Front motor model</b>	TZ180XS008
<b>Fast Charging Power (kW)</b>	75
<b>Battery unique technology</b>	Using flame retardant materials and thermal runaway protection technology
<b>Charging pile price (yuan)</b>	USD 735

## Screen/System

<b>Central control color screen</b>	<ul style="list-style-type: none"><li>• Touch LCD screen</li></ul>
<b>Infotainment Screen Size</b>	<ul style="list-style-type: none"><li>• 15.7 inches</li></ul>
<b>Bluetooth/In-car Phone</b>	<ul style="list-style-type: none"><li>•</li></ul>
<b>Voice recognition control system</b>	<ul style="list-style-type: none"><li>• Multimedia system;</li><li>• Navigation;</li><li>• Telephone;</li><li>• Air conditioning;</li><li>• Windows;</li><li>• Seat heating;</li><li>• Seat ventilation;</li><li>• Seat massage</li></ul>
<b>Voice wake-up recognition by region</b>	<ul style="list-style-type: none"><li>• Six areas</li></ul>
<b>Rear LCD screen</b>	<ul style="list-style-type: none"><li>•</li></ul>
<b>Vehicle system storage (GB)</b>	<ul style="list-style-type: none"><li>•256</li></ul>
<b>App Store</b>	<ul style="list-style-type: none"><li>•</li></ul>
<b>Central control screen type</b>	<ul style="list-style-type: none"><li>•OLED</li></ul>
<b>Central control screen resolution</b>	<ul style="list-style-type: none"><li>•3K</li></ul>
<b>Central control screen pixel density</b>	<ul style="list-style-type: none"><li>•210PPI</li></ul>

## Screen/System (continued)

<b>Passenger entertainment screen size</b>	<ul style="list-style-type: none"><li>• 15.7 inches</li></ul>
<b>Passenger screen type</b>	<ul style="list-style-type: none"><li>•OLED</li></ul>
<b>Passenger screen resolution</b>	<ul style="list-style-type: none"><li>•3K</li></ul>
<b>Passenger screen pixel density</b>	<ul style="list-style-type: none"><li>•210PPI</li></ul>
<b>Voice assistant wake-up word</b>	<ul style="list-style-type: none"><li>• Ideal classmate</li></ul>
<b>Voice wake-up word-free</b>	<ul style="list-style-type: none"><li>•</li></ul>
<b>Continuous speech recognition</b>	<ul style="list-style-type: none"><li>•</li></ul>
<b>See and Say</b>	<ul style="list-style-type: none"><li>•</li></ul>
<b>Car Intelligent Chip</b>	<ul style="list-style-type: none"><li>•2 Qualcomm Snapdragon 8155 chips</li></ul>
<b>Multi-finger flying screen control</b>	<ul style="list-style-type: none"><li>•</li></ul>
<b>Vehicle system memory (GB)</b>	<ul style="list-style-type: none"><li>•24</li></ul>
<b>Rear multimedia control</b>	<ul style="list-style-type: none"><li>•</li></ul>
<b>Rear LCD screen size</b>	<ul style="list-style-type: none"><li>• 15.7 inches</li></ul>
<b>Number of rear multimedia screens</b>	<ul style="list-style-type: none"><li>• 1</li></ul>
<b>Rear LCD screen type</b>	<ul style="list-style-type: none"><li>•OLED</li></ul>
<b>Rear LCD screen resolution</b>	<ul style="list-style-type: none"><li>•3K</li></ul>
<b>Gesture Control</b>	<ul style="list-style-type: none"><li>•</li></ul>
<b>Voiceprint Recognition</b>	<ul style="list-style-type: none"><li>•</li></ul>

## Body

<b>Length (mm)</b>	5218
<b>Width (mm)</b>	1998
<b>Height (mm)</b>	1800
<b>Wheelbase (mm)</b>	3105
<b>Front Track (mm)</b>	1725
<b>Rear Track (mm)</b>	1741
<b>Door Opening Type</b>	swing door
<b>Number of Doors</b>	5
<b>Number of Seats</b>	6

## Body (continued)

<b>Fuel Tank Capacity (L)</b>	65
<b>Trunk volume (L)</b>	332-1191
<b>Drag Coefficient (Cd)</b>	0.3
<b>Approach Angle (°)</b>	19
<b>Departure Angle (°)</b>	21

## Gearbox

<b>Abbreviation</b>	Electric vehicle single speed gearbox
<b>Number of Gears</b>	1
<b>Transmission Type</b>	Fixed Gear Ratio Transmission

## Chassis steering

<b>Drive Type</b>	Dual-motor All-wheel Drive
<b>Four-wheel drive</b>	Electric four-wheel drive
<b>Front Suspension Type</b>	Double wishbone independent suspension
<b>Rear Suspension Type</b>	Five-link independent suspension
<b>Power Steering Type</b>	Electric power assistance
<b>Vehicle structure</b>	bearing type

## Seat Configuration

<b>Seat Material</b>	<ul style="list-style-type: none"><li>• Leather</li></ul>
<b>Main seat adjustment</b>	<ul style="list-style-type: none"><li>• Front and rear adjustment;</li><li>• Backrest adjustment;</li><li>• Height adjustment (4-way);</li><li>• Lumbar support (4-way)</li></ul>
<b>Co-seat adjustment method</b>	<ul style="list-style-type: none"><li>• Front and rear adjustment;</li><li>• Backrest adjustment;</li><li>• Height adjustment (4-way);</li><li>• Lumbar support (4-way)</li></ul>
<b>Electric adjustment of driver's seat and passenger seat</b>	Main •/Deputy •
<b>Front seat functions</b>	<ul style="list-style-type: none"><li>• Heating;</li><li>• Ventilation;</li><li>• Massage</li></ul>
<b>Electric seat memory function</b>	<ul style="list-style-type: none"><li>• driving position;</li><li>• co-pilot position</li></ul>
<b>Front passenger seat rear adjustable buttons</b>	<ul style="list-style-type: none"><li>•</li></ul>
<b>Second row seat adjustment</b>	<ul style="list-style-type: none"><li>• Front and rear adjustment;</li><li>• Backrest adjustment;</li><li>• Lumbar adjustment;</li><li>• Leg rest adjustment</li></ul>
<b>Rear seat folding</b>	<ul style="list-style-type: none"><li>• Proportional down</li></ul>

## Seat Configuration (continued)

<b>Front/rear center armrest</b>	Front •/Rear •
<b>Rear cup holder</b>	•
<b>Second row seat functions</b>	• Heating; • Ventilation; • Massage
<b>Seat Layout</b>	•2-2-2
<b>Second row independent seats</b>	•
<b>Electric folding rear seats</b>	•
<b>Second row seats electrically adjustable</b>	•
<b>Third row seat adjustment</b>	• Backrest adjustment
<b>The third row of seats is electrically adjustable</b>	•
<b>Rear small table</b>	•
<b>Third row seat functions</b>	• Heating

## Active safety

<b>Anti-lock Braking System (ABS)</b>	•
<b>Electronic Brakeforce Distribution (EBD/CBC)</b>	•
<b>Brake Assist System (EBA/BAS/BA)</b>	•
<b>Traction Control System (ASR/TCS/TRC)</b>	•
<b>Electronic Stability Control (ESC/ESP/DSC)</b>	•
<b>Tire Pressure Monitoring System (TPMS)</b>	• Tire pressure display
<b>Seat Belt Reminder</b>	• Full vehicle
<b>ISOFIX Child Seat Anchors</b>	•
<b>Lane Departure Warning System (LDWS)</b>	•
<b>Autonomous Emergency Braking (AEB)</b>	•
<b>Driver Fatigue Detection</b>	•
<b>Forward Collision Warning (FCW)</b>	•
<b>Low Speed Alert</b>	•

## Active safety (continued)

<b>Emergency Call System (eCall)</b>	•
<b>Built-in Dashcam</b>	•
<b>Door Opening Warning (DOW)</b>	•
<b>Sentry Mode</b>	•

## Air conditioning/refrigerator

<b>Air conditioning temperature control method</b>	• Automatic air conditioning
<b>Rear Independent Climate Control</b>	•
<b>Rear seat air vents</b>	•
<b>Temperature zone control</b>	•
<b>Car air purifier</b>	•
<b>In-cabin PM2.5 Filter</b>	•
<b>In-car Refrigerator</b>	•
<b>Car fragrance device</b>	•
<b>Air quality monitoring</b>	•

## Passive safety

<b>Driver/passenger airbag</b>	Main •/Deputy •
<b>Front/rear side airbags</b>	Front •/Rear •
<b>Front/rear head airbags (curtain airbags)</b>	Front •/Rear •

## Wheel brake

<b>Front Brake Type</b>	Ventilation disc
<b>Rear Brake Type</b>	Ventilation disc
<b>Parking brake type</b>	Electronic Parking
<b>Front Tire Size</b>	265/45 R21
<b>Rear Tire Size</b>	265/45 R21
<b>Spare Tire Size</b>	-

## Audio/Interior Lighting

<b>Number of speakers</b>	• 21 Horn
<b>Interior ambient lighting</b>	• 256 color
<b>Touch reading light</b>	•
<b>Dolby Atmos</b>	•

## Driving functions

## Driving functions (continued)

<b>Navigation traffic information display</b>	<ul style="list-style-type: none"><li>•</li></ul>
<b>Lane assist</b>	<ul style="list-style-type: none"><li>•</li></ul>
<b>Lane Keeping Assist System</b>	<ul style="list-style-type: none"><li>•</li></ul>
<b>Cruise control system</b>	<ul style="list-style-type: none"><li>• Full speed adaptive cruise</li></ul>
<b>Satellite navigation system</b>	<ul style="list-style-type: none"><li>•</li></ul>
<b>Driving assistance level</b>	<ul style="list-style-type: none"><li>• L2</li></ul>
<b>Lane centering</b>	<ul style="list-style-type: none"><li>•</li></ul>
<b>Road traffic sign recognition</b>	<ul style="list-style-type: none"><li>•</li></ul>
<b>Map Brand</b>	<ul style="list-style-type: none"><li>• Gaud</li></ul>
<b>Driver assistance systems</b>	<ul style="list-style-type: none"><li>• The ideal AD Pro</li></ul>
<b>High-precision map</b>	<ul style="list-style-type: none"><li>•</li></ul>
<b>Remote Summon</b>	<ul style="list-style-type: none"><li>•</li></ul>
<b>Hands-off detection</b>	<ul style="list-style-type: none"><li>•</li></ul>
<b>Start reminder</b>	<ul style="list-style-type: none"><li>•</li></ul>
<b>Parking Assist</b>	<ul style="list-style-type: none"><li>•</li></ul>
<b>Lane Change Assist</b>	<ul style="list-style-type: none"><li>•</li></ul>
<b>Automatic Ramp Entry/Exit Assist</b>	<ul style="list-style-type: none"><li>•</li></ul>
<b>Highway sections</b>	<ul style="list-style-type: none"><li>• Expressway section</li></ul>

## Exterior lighting

<b>Low beam light source</b>	<ul style="list-style-type: none"><li>• LED</li></ul>
<b>High beam light source</b>	<ul style="list-style-type: none"><li>• LED</li></ul>
<b>LED daytime running lights</b>	<ul style="list-style-type: none"><li>•</li></ul>
<b>Adaptive high and low beam</b>	<ul style="list-style-type: none"><li>•</li></ul>
<b>Automatic headlights</b>	<ul style="list-style-type: none"><li>•</li></ul>
<b>Height-adjustable headlights</b>	<ul style="list-style-type: none"><li>•</li></ul>
<b>Headlight Delay Off</b>	<ul style="list-style-type: none"><li>•</li></ul>
<b>Turn signal lamp</b>	<ul style="list-style-type: none"><li>•</li></ul>

## Exterior mirrors

## Exterior mirrors (continued)

<b>Exterior mirror function</b>	<ul style="list-style-type: none"><li>• Electric adjustment;</li><li>• Electric folding;</li><li>• Rearview mirror memory;</li><li>• Rearview mirror heating;</li><li>• Automatic downturning when reversing;</li><li>• Automatic folding when locked;</li><li>• Automatic anti-glare</li></ul>
---------------------------------	---

## Appearance/anti-theft

<b>Rim material</b>	<ul style="list-style-type: none"><li>• Aluminum alloy</li></ul>
<b>Electric trunk</b>	<ul style="list-style-type: none"><li>•</li></ul>
<b>Electronic engine immobilizer</b>	<ul style="list-style-type: none"><li>•</li></ul>
<b>Central locking system in the car</b>	<ul style="list-style-type: none"><li>•</li></ul>
<b>Key Type</b>	<ul style="list-style-type: none"><li>• Remote key;</li><li>• Bluetooth key</li></ul>
<b>Keyless start system</b>	<ul style="list-style-type: none"><li>•</li></ul>
<b>Keyless entry function</b>	<ul style="list-style-type: none"><li>• Full vehicle</li></ul>
<b>Hands-free Trunk</b>	<ul style="list-style-type: none"><li>•</li></ul>
<b>Electric trunk position memory</b>	<ul style="list-style-type: none"><li>•</li></ul>
<b>Remote start function</b>	<ul style="list-style-type: none"><li>•</li></ul>
<b>Battery preheating</b>	<ul style="list-style-type: none"><li>•</li></ul>
<b>Active closed grille</b>	<ul style="list-style-type: none"><li>•</li></ul>
<b>Electric door closing</b>	<ul style="list-style-type: none"><li>• Full vehicle</li></ul>
<b>Hidden electric door handle</b>	<ul style="list-style-type: none"><li>•</li></ul>
<b>Discharge to the outside</b>	<ul style="list-style-type: none"><li>•</li></ul>
<b>Side pedals</b>	<ul style="list-style-type: none"><li>○ Electric (USD 1,471)</li></ul>

## Skylight/Glass

<b>Sunroof Type</b>	<ul style="list-style-type: none"><li>• Sectional unopenable skylight</li></ul>
<b>Front/rear electric windows</b>	Front •/Rear •
<b>One-touch window lifting function</b>	<ul style="list-style-type: none"><li>• Full vehicle</li></ul>
<b>Window anti-pinch function</b>	<ul style="list-style-type: none"><li>•</li></ul>
<b>Car makeup mirror</b>	<ul style="list-style-type: none"><li>• Main driver's lamp;</li><li>• co-pilot's lamp</li></ul>
<b>Rear wiper</b>	<ul style="list-style-type: none"><li>•</li></ul>
<b>Rain sensor wiper function</b>	<ul style="list-style-type: none"><li>• Rainfall-sensing</li></ul>

## Skylight/Glass (continued)

<b>Rear side privacy glass</b>	<ul style="list-style-type: none"><li>•</li></ul>
<b>Side window multi-layer soundproof glass</b>	<ul style="list-style-type: none"><li>• Front row;</li><li>• Rear row</li></ul>

## Interior and exterior color

<b>Exterior Color</b>	Gold Metallic #8F8270 Silver Metallic #C7C7C7 Black Metallic #1E1E1E gray metallic #A4A8AE Green special edition pearl paint #6C877C Purple Special Edition Pearl Paint #755382 Blue Special Edition Cold Light Paint #A3B9D2
<b>Interior Color</b>	Black White #000000 #DAD6CF Black Orange #000000 #C0674A Black Coffee color #000000 #332F2E

## Steering wheel/interior mirror

<b>Steering Wheel Material</b>	<ul style="list-style-type: none"><li>• Leather</li></ul>
<b>Steering wheel position adjustment</b>	<ul style="list-style-type: none"><li>• Electric up and down front and rear adjustment</li></ul>
<b>Multi-function steering wheel</b>	<ul style="list-style-type: none"><li>•</li></ul>
<b>Heated Steering Wheel</b>	<ul style="list-style-type: none"><li>•</li></ul>
<b>Steering wheel memory</b>	<ul style="list-style-type: none"><li>•</li></ul>
<b>Trip computer display screen</b>	<ul style="list-style-type: none"><li>• Color</li></ul>
<b>Full LCD instrument panel</b>	<ul style="list-style-type: none"><li>•</li></ul>
<b>LCD instrument size</b>	<ul style="list-style-type: none"><li>• 4.82 inches</li></ul>
<b>Interior rearview mirror function</b>	<ul style="list-style-type: none"><li>• Automatic anti-glare</li></ul>
<b>Gear shifting</b>	<ul style="list-style-type: none"><li>• Electronic gear shift</li></ul>
<b>HUD Head Up Digital Display</b>	<ul style="list-style-type: none"><li>•</li></ul>
<b>HUD head up size</b>	<ul style="list-style-type: none"><li>• 13.35 inches</li></ul>

## Intelligent configuration

<b>Connected Car Services</b>	<ul style="list-style-type: none"><li>•</li></ul>
<b>OTA Updates</b>	<ul style="list-style-type: none"><li>•</li></ul>
<b>4G/5G Network</b>	<ul style="list-style-type: none"><li>•5G</li></ul>

## Intelligent configuration (continued)

<b>Mobile APP remote function</b>	<ul style="list-style-type: none"><li>• Door control;</li><li>• Window control;</li><li>• Vehicle startup;</li><li>• Charging management;</li><li>• Air conditioning control;</li><li>• Steering wheel heating;</li><li>• Seat heating;</li><li>• Seat ventilation;</li><li>• Vehicle condition inquiry/diagnosis;</li><li>• Vehicle location/car search;</li><li>• Owner service (find charging piles, gas stations, parking lots, etc.);</li><li>• Appointment maintenance/repair</li></ul>
<b>In-vehicle Biometric Monitoring</b>	<ul style="list-style-type: none"><li>•</li></ul>

## Driving Control

<b>Driving mode switch</b>	<ul style="list-style-type: none"><li>• Sport;</li><li>• Standard/Comfort;</li><li>• Off-road;</li><li>• Snow</li></ul>
<b>Automatic parking</b>	<ul style="list-style-type: none"><li>•</li></ul>
<b>Steep slope descent</b>	<ul style="list-style-type: none"><li>•</li></ul>
<b>Hill start assist</b>	<ul style="list-style-type: none"><li>•</li></ul>
<b>Energy recovery system</b>	<ul style="list-style-type: none"><li>•</li></ul>
<b>Variable suspension function</b>	<ul style="list-style-type: none"><li>• Suspension damping adjustment;</li><li>• Suspension height adjustment</li></ul>
<b>Air Suspension</b>	<ul style="list-style-type: none"><li>•</li></ul>
<b>Magic Carpet Intelligent Suspension</b>	<ul style="list-style-type: none"><li>•</li></ul>

## Driving Hardware

<b>Front/rear parking radar</b>	Front •/Rear •
<b>Driving Assistance Camera System</b>	<ul style="list-style-type: none"><li>• 360-degree panoramic image</li></ul>
<b>Front perception camera</b>	<ul style="list-style-type: none"><li>• Monocular</li></ul>
<b>Number of cameras</b>	<ul style="list-style-type: none"><li>• 10</li></ul>
<b>Number of ultrasonic radars</b>	<ul style="list-style-type: none"><li>• 12</li></ul>
<b>Transparent chassis/540-degree imaging</b>	<ul style="list-style-type: none"><li>•</li></ul>
<b>Millimeter wave radar quantity</b>	<ul style="list-style-type: none"><li>• 1</li></ul>
<b>Assisted driving chip</b>	<ul style="list-style-type: none"><li>• Horizon Journey 5</li></ul>
<b>Total chip computing power</b>	<ul style="list-style-type: none"><li>•128 TOPS</li></ul>
<b>Front perception camera pixels</b>	<ul style="list-style-type: none"><li>•USD 1,176,471</li></ul>

## Driving Hardware (continued)

<b>Environmental awareness camera pixels</b>	•USD 294,118
<b>Surround view camera pixels</b>	•USD 294,118

## In-car charging

<b>Multimedia/charging port</b>	•Type-C
<b>Number of USB/Type-C ports</b>	• 2 in the front row/4 in the back row
<b>Mobile phone wireless charging function</b>	• Front row
<b>220V/230V power supply</b>	•
<b>Luggage compartment 12V power socket</b>	•
<b>USB/Type-C maximum charging power</b>	•60W

---

"●" = Standard equipment

"\_" = Not available

"○" = Optional equipment.

Note: These are Chinese market vehicles. Warranty coverage is not available outside of China.