

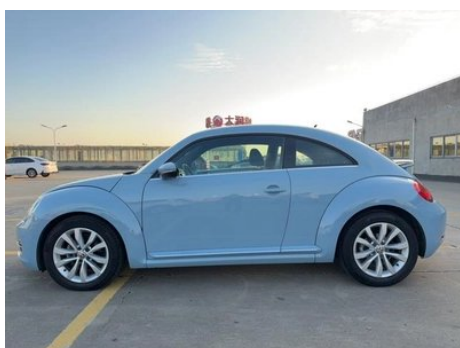
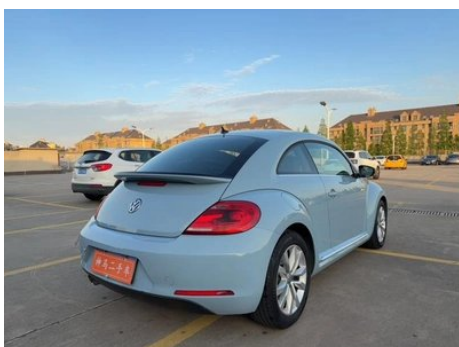
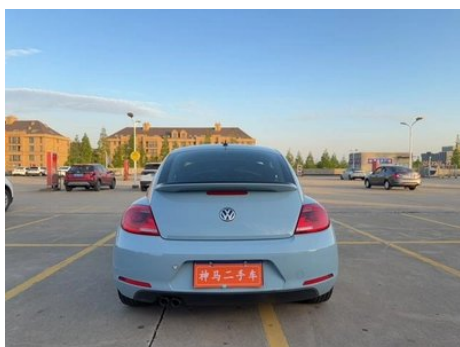
# Vehicle Detail Report

## Beetle 2015 280TSI

### Basic Information

Brand	Volkswagen
Mileage	145,000 km
Color	Blue
First Registration	2015-05-01
Transfer Count	0

### Vehicle Images





## Vehicle Condition

1. Right rocker panel, Outer side deformation. 2. Airbag, Replaced.

## Configuration Information

### Model Information

<b>Model Name</b>	Beetle 2015 280TSI
<b>Launch Date</b>	2014.10

### Basic parameters

<b>Vehicle Class</b>	compact car
<b>Energy Type</b>	Gasoline
<b>Maximum Power (kW)</b>	118
<b>Maximum Torque (N·m)</b>	240

## Basic parameters (continued)

<b>Transmission</b>	7-speed dry dual clutch
<b>Body Type</b>	Liftback
<b>Engine</b>	1.4T 160 horsepower L4
<b>Dimensions (L×W×H) (mm)</b>	4278*1808*1486
<b>Official 0-100 km/h Acceleration (s)</b>	8.3
<b>Top Speed (km/h)</b>	207
<b>Curb Weight (kg)</b>	1386
<b>Maximum Gross Weight (kg)</b>	-
<b>NEDC Combined Fuel Consumption (L/100km)</b>	6.1

## engine

<b>Engine Model</b>	-
<b>Displacement (mL)</b>	1390
<b>Displacement (L)</b>	1.4
<b>Induction Type</b>	Mechanical Turbocharger
<b>Cylinder Arrangement</b>	L
<b>Number of Cylinders</b>	4
<b>Valves per Cylinder</b>	4
<b>Compression Ratio</b>	10
<b>Valve Train</b>	DOHC
<b>Bore (mm)</b>	76.5
<b>Stroke (mm)</b>	75.6
<b>Maximum Power (PS)</b>	160
<b>Max Power Speed (rpm)</b>	5800
<b>Max Torque Speed (rpm)</b>	1500-4500
<b>Maximum net power (kW)</b>	-
<b>Fuel Grade</b>	95.
<b>Fuel Delivery System</b>	Direct injection
<b>Cylinder Head Material</b>	Aluminum alloy
<b>Cylinder Block Material</b>	Cast iron

## Screen/System

<b>Central control color screen</b>	○
-------------------------------------	---

## Screen/System (continued)

<b>Bluetooth/In-car Phone</b>	○
<b>In-car CD/DVD Player</b>	• Single disc CD;○ Multi-disc CD system

## Body

<b>Length (mm)</b>	4278
<b>Width (mm)</b>	1808
<b>Height (mm)</b>	1486
<b>Wheelbase (mm)</b>	2537
<b>Front Track (mm)</b>	-
<b>Rear Track (mm)</b>	-
<b>Door Opening Type</b>	-
<b>Number of Doors</b>	3
<b>Number of Seats</b>	4
<b>Fuel Tank Capacity (L)</b>	55
<b>Trunk volume (L)</b>	310-905
<b>Drag Coefficient (Cd)</b>	-

## Gearbox

<b>Abbreviation</b>	7-speed dry dual clutch
<b>Number of Gears</b>	7
<b>Transmission Type</b>	Dry Dual-Clutch Transmission (DCT)

## Chassis steering

<b>Drive Type</b>	Front-engine, Front-wheel drive (FF)
<b>Front Suspension Type</b>	MacPherson independent suspension
<b>Rear Suspension Type</b>	Multi-link independent suspension
<b>Power Steering Type</b>	Electric power assistance
<b>Vehicle structure</b>	bearing type

## Seat Configuration

<b>Seat Material</b>	•Fabric; ○Genuine Leather
<b>Main seat adjustment</b>	• Front and rear adjustment; • Backrest adjustment; • Height adjustment (2-way)
<b>Co-seat adjustment method</b>	• Front and rear adjustment; • Backrest adjustment
<b>Electric adjustment of driver's seat and passenger seat</b>	-

## Seat Configuration (continued)

<b>Front seat functions</b>	○ Heating
<b>Front passenger seat rear adjustable buttons</b>	-
<b>Rear seat folding</b>	• Proportional down
<b>Front/rear center armrest</b>	Front •/Rear-
<b>Rear cup holder</b>	•
<b>Sports style seats</b>	○

## Active safety

<b>Anti-lock Braking System (ABS)</b>	•
<b>Electronic Brakeforce Distribution (EBD/CBC)</b>	•
<b>Brake Assist System (EBA/BAS/BA)</b>	•
<b>Traction Control System (ASR/TCS/TRC)</b>	•
<b>Electronic Stability Control (ESC/ESP/DSC)</b>	•
<b>Tire Pressure Monitoring System (TPMS)</b>	○
<b>Seat Belt Reminder</b>	•
<b>ISOFIX Child Seat Anchors</b>	•
<b>Lane Departure Warning System (LDWS)</b>	-
<b>Autonomous Emergency Braking (AEB)</b>	-
<b>Driver Fatigue Detection</b>	-
<b>Emergency Call System (eCall)</b>	○

## Air conditioning/refrigerator

<b>Air conditioning temperature control method</b>	• Manual air conditioning; ○ Automatic air conditioning
<b>Rear Independent Climate Control</b>	-
<b>Rear seat air vents</b>	-
<b>Temperature zone control</b>	○
<b>Car air purifier</b>	-
<b>In-cabin PM2.5 Filter</b>	-

## Passive safety

## Passive safety (continued)

<b>Driver/passenger airbag</b>	Main •/Deputy •
<b>Front/rear side airbags</b>	Front •/Rear-
<b>Front/rear head airbags (curtain airbags)</b>	Front •/Rear-

## Wheel brake

<b>Front Brake Type</b>	Ventilation disc
<b>Rear Brake Type</b>	Disc
<b>Parking brake type</b>	handbrake
<b>Front Tire Size</b>	215/55 R17
<b>Rear Tire Size</b>	215/55 R17
<b>Spare Tire Size</b>	Not full-size

## Audio/Interior Lighting

<b>Speaker Brand Name</b>	<input type="radio"/> Fender Fender
<b>Number of speakers</b>	•6-7 speakers; <input type="radio"/> 10-11 speakers

## Driving functions

<b>Navigation traffic information display</b>	-
<b>Lane assist</b>	-
<b>Lane Keeping Assist System</b>	-
<b>Cruise control system</b>	• Cruise control
<b>Satellite navigation system</b>	<input type="radio"/>
<b>Parking Assist</b>	-

## Exterior lighting

<b>Low beam light source</b>	• Halogen; <input type="radio"/> Xenon
<b>High beam light source</b>	• Halogen; <input type="radio"/> Xenon
<b>LED daytime running lights</b>	<input type="radio"/>
<b>Adaptive high and low beam</b>	-
<b>Automatic headlights</b>	-
<b>Front fog lights</b>	•
<b>Height-adjustable headlights</b>	•
<b>Headlight Delay Off</b>	-
<b>Turn signal lamp</b>	•

## Exterior mirrors

<b>Exterior mirror function</b>	<ul style="list-style-type: none"><li>• Electric adjustment, ○ Electric, Folding;</li><li>• Mirror heating</li></ul>
---------------------------------	--

## Appearance/anti-theft

<b>Rim material</b>	<ul style="list-style-type: none"><li>• Aluminum alloy</li></ul>
<b>Electric trunk</b>	-
<b>Electronic engine immobilizer</b>	<ul style="list-style-type: none"><li>•</li></ul>
<b>Central locking system in the car</b>	<ul style="list-style-type: none"><li>•</li></ul>
<b>Key Type</b>	<ul style="list-style-type: none"><li>• Remote key</li></ul>
<b>Keyless start system</b>	-
<b>Appearance Kit</b>	○ Sports style
<b>Frameless door design</b>	<ul style="list-style-type: none"><li>•</li></ul>

## Skylight/Glass

<b>Sunroof Type</b>	○ Electric sunroof; ○ Panoramic sunroof
<b>Front/rear electric windows</b>	Front •/Rear-
<b>Window anti-pinch function</b>	<ul style="list-style-type: none"><li>•</li></ul>
<b>Car makeup mirror</b>	<ul style="list-style-type: none"><li>•</li></ul>
<b>Rear wiper</b>	-
<b>Rain sensor wiper function</b>	○

## Interior and exterior color

<b>Exterior Color</b>	Goose egg white:#FAFAFA; Tannin blue:#697692; Platinum gray:#9BA2B5; Mist white:#98A7BC; Tang Di Huang:#F9B16E; Piano, Black:#000000, Blue Mountain Brown:#5A4636; Streamer Silver:#B2B5B7; Charm Red:#A10038; Ink, Black:#000000, Moonlight Silver:#B1A9A5; Deep Black:#24272A; Positive, Black:#000000
<b>Interior Color</b>	White, Meteorite Black:#FFFFFF/#5F6064; Ninja Black:#24262B; Sky/Deep Sea:#202227/#46545E; Red candle:#842C38; Red candle/shadow:#862E39/#1E2025; Flax rice:#96897A; Meteorite Black:#3D4043

## Steering wheel/interior mirror

<b>Steering Wheel Material</b>	• Cortex
<b>Steering wheel position adjustment</b>	• Manual up and down front and rear adjustment
<b>Multi-function steering wheel</b>	○
<b>Heated Steering Wheel</b>	-
<b>Steering wheel memory</b>	-
<b>Trip computer display screen</b>	•
<b>Full LCD instrument panel</b>	-
<b>Interior rearview mirror function</b>	○ Automatic anti-glare

## Intelligent configuration

<b>Connected Car Services</b>	-
<b>OTA Updates</b>	-

## Driving Control

<b>Automatic parking</b>	-
<b>Hill start assist</b>	•

## Driving Hardware

<b>Front/rear parking radar</b>	Front ○/Rear ○
---------------------------------	----------------

## In-car charging

<b>Multimedia/charging port</b>	•USB;•AUX;○SD
---------------------------------	---------------

"●" = Standard equipment

"\_" = Not available

"○" = Optional equipment.

Note: These are Chinese market vehicles. Warranty coverage is not available outside of China.