

Vehicle Detail Report

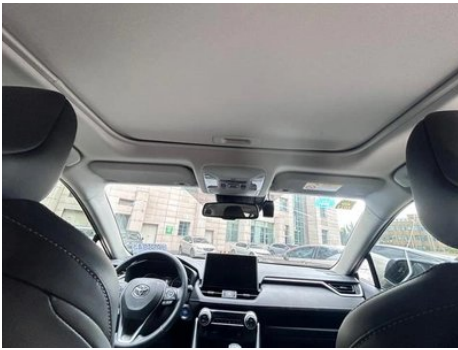
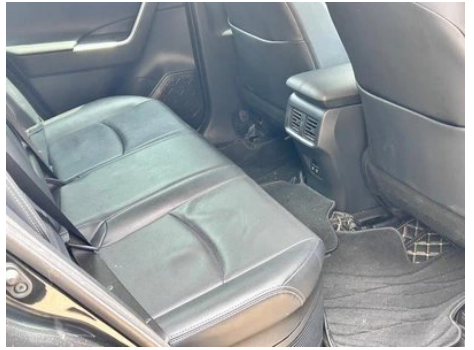
Wildlander 2020 Shuangqing 2.5L Two-wheel Drive Premium Edition

Basic Information

Brand	Toyota
Mileage	71,000 km
Color	Black
First Registration	2020-12-01
Transfer Count	0

Vehicle Images







Vehicle Condition

1. Original metal panels and factory paint.

Configuration Information

Model Information

Model Name	Wildlander 2020 Shuangqing 2.5L E-CVT Two-wheel Drive Premium Edition
Launch Date	2020.02

Basic parameters

Vehicle Class	Compact SUV
Energy Type	Hybrid Electric Vehicle (HEV)
Maximum Power (kW)	131
Maximum Torque (N·m)	221
Transmission	E-CVT continuously variable transmission
Body Type	SUV
Engine	2.5L 178 horsepower L4
Dimensions (L×W×H) (mm)	4665*1855*1680
Official 0-100 km/h Acceleration (s)	-
Top Speed (km/h)	180
Curb Weight (kg)	1675
Maximum Gross Weight (kg)	-
Electric Motor (PS)	120
NEDC Combined Fuel Consumption (L/100km)	4.7

engine

Engine Model	A25D
Displacement (mL)	2487
Displacement (L)	2.5

engine (continued)

Induction Type	Natural aspiration
Cylinder Arrangement	L
Number of Cylinders	4
Valves per Cylinder	4
Compression Ratio	14
Valve Train	DOHC
Bore (mm)	87.5
Stroke (mm)	103.4
Maximum Power (PS)	178
Max Power Speed (rpm)	5700
Max Torque Speed (rpm)	3600-5200
Maximum net power (kW)	131
Fuel Grade	92.
Fuel Delivery System	Mixed injection
Cylinder Head Material	Aluminum alloy
Cylinder Block Material	Aluminum alloy
Engine layout	Horizontal

Electric Motor

Motor Type	Permanent magnet/synchronous
Total Electric Motor Power (kW)	88
Total Electric Motor Torque (N·m)	202
Front Electric Motor Max Power (kW)	88
Front Electric Motor Max Torque (N·m)	202
System total power (kW)	160
Number of drive motors	Single motor
Motor Layout	Front-end
Battery Type	Nickel-metal hydride battery

Screen/System

Central control color screen	<ul style="list-style-type: none">• Touch LCD screen
Infotainment Screen Size	<ul style="list-style-type: none">• 10.1 inches
Bluetooth/In-car Phone	<ul style="list-style-type: none">•

Screen/System (continued)

Smartphone Integration/ Mirroring	<ul style="list-style-type: none">• Support CarLife;• Factory interconnection/mapping
Voice recognition control system	<ul style="list-style-type: none">• Multimedia system;• Navigation;• Telephone

Body

Length (mm)	4665
Width (mm)	1855
Height (mm)	1680
Wheelbase (mm)	2690
Front Track (mm)	1605
Rear Track (mm)	1620
Door Opening Type	swing door
Number of Doors	5
Number of Seats	5
Fuel Tank Capacity (L)	55
Trunk volume (L)	580
Drag Coefficient (Cd)	-
Approach Angle (°)	17.8
Departure Angle (°)	20.1
Minimum Turning Radius (m)	5.5

Gearbox

Abbreviation	E-CVT continuously variable transmission
Number of Gears	stepless speed change
Transmission Type	Electronic Continuously Variable Transmission (E-CVT)

Chassis steering

Drive Type	Front-engine, Front-wheel drive (FF)
Front Suspension Type	MacPherson independent suspension
Rear Suspension Type	E-type multi-link independent suspension
Power Steering Type	Electric power assistance
Vehicle structure	bearing type

Seat Configuration

Seat Material	<ul style="list-style-type: none">• Genuine leather;• Faux leather
----------------------	---

Seat Configuration (continued)

Main seat adjustment	<ul style="list-style-type: none">• Front and rear adjustment;• Backrest adjustment;• Height adjustment (4-way);• Lumbar support (2-way)
Co-seat adjustment method	<ul style="list-style-type: none">• Front and rear adjustment;• Backrest adjustment
Electric adjustment of driver's seat and passenger seat	Main/Deputy-
Front seat functions	<ul style="list-style-type: none">• Heating;• Ventilation
Front passenger seat rear adjustable buttons	-
Second row seat adjustment	<ul style="list-style-type: none">• Backrest adjustment
Rear seat folding	<ul style="list-style-type: none">• Proportional down
Front/rear center armrest	Front •/Rear •
Rear cup holder	<ul style="list-style-type: none">•

Active safety

Anti-lock Braking System (ABS)	<ul style="list-style-type: none">•
Electronic Brakeforce Distribution (EBD/CBC)	<ul style="list-style-type: none">•
Brake Assist System (EBA/BAS/BA)	<ul style="list-style-type: none">•
Traction Control System (ASR/TCS/TRC)	<ul style="list-style-type: none">•
Electronic Stability Control (ESC/ESP/DSC)	<ul style="list-style-type: none">•
Tire Pressure Monitoring System (TPMS)	<ul style="list-style-type: none">• Tire pressure alarm
Seat Belt Reminder	<ul style="list-style-type: none">• Full car
ISOFIX Child Seat Anchors	<ul style="list-style-type: none">•
Lane Departure Warning System (LDWS)	<ul style="list-style-type: none">•
Autonomous Emergency Braking (AEB)	<ul style="list-style-type: none">•
Driver Fatigue Detection	-
Emergency Call System (eCall)	<ul style="list-style-type: none">•

Air conditioning/refrigerator

Air conditioning/refrigerator (continued)

Air conditioning temperature control method	• Automatic air conditioning
Rear Independent Climate Control	-
Rear seat air vents	•
Temperature zone control	•
Car air purifier	-
In-cabin PM2.5 Filter	•

Passive safety

Driver/passenger airbag	Main •/Deputy •
Front/rear side airbags	Front •/Rear-
Front/rear head airbags (curtain airbags)	Front •/Rear •
Knee airbag	• Main driver knee airbag

Wheel brake

Front Brake Type	Ventilation disc
Rear Brake Type	Disc
Parking brake type	Electronic Parking
Front Tire Size	225/60 R18
Rear Tire Size	225/60 R18
Spare Tire Size	Not full-size

Audio/Interior Lighting

Number of speakers	• 6 speakers
Interior ambient lighting	• Monochrome

Driving functions

Navigation traffic information display	•
Lane assist	-
Lane Keeping Assist System	•
Cruise control system	• Full speed adaptive cruise
Satellite navigation system	•
Parking Assist	-

Exterior lighting

Low beam light source	•LED
------------------------------	------

Exterior lighting (continued)

High beam light source	•LED
LED daytime running lights	•
Adaptive high and low beam	•
Automatic headlights	•
Front fog lights	•LED
Height-adjustable headlights	•
Headlight Delay Off	-

Exterior mirrors

Exterior mirror function	• Electric adjustment; • Electric folding; • Rearview mirror heating; • Automatic folding when locked
---------------------------------	---

Appearance/anti-theft

Rim material	• Aluminum alloy
Electric trunk	•
Electronic engine immobilizer	•
Central locking system in the car	•
Key Type	• Remote key
Keyless start system	•
Keyless entry function	• Front row
Hands-free Trunk	•
Electric trunk position memory	•
Active closed grille	•

Skylight/Glass

Sunroof Type	• Electric sunroof
Front/rear electric windows	Front •/Rear •
One-touch window lifting function	• Full car
Window anti-pinch function	•
Car makeup mirror	• Main driver's lamp; • co-pilot's lamp
Rear wiper	•

Interior and exterior color

Exterior Color	Silver, Ink Crystal, Black:#B5B5B5/#000000; Amber Brown:#301513, Platinum, Pearl, White:#DCE2E0, Sea Diamond Blue:#0F4A93, Ink Crystal, Black:#000000, Black jade, Blue: #254D5E; Opal Silver: #D0D0D0, Black, Platinum, Pearl, White:#000000/#DDE2E0, Black, Sea Diamond Blue:#000000/#0F4A93, Black, Opal Silver:#000000/#D0D0; Silver/Amber Brown:#B5B5B5/#62504C; Silver, Black jade, Blue:#B5B5B5/#254D5E
Interior Color	Black, #414544, Gray: #F6F6F8

Steering wheel/interior mirror

Steering Wheel Material	<ul style="list-style-type: none">• Leather
Steering wheel position adjustment	<ul style="list-style-type: none">• Manual up and down front and rear adjustment
Multi-function steering wheel	<ul style="list-style-type: none">•
Heated Steering Wheel	-
Steering wheel memory	-
Trip computer display screen	<ul style="list-style-type: none">• Color
Full LCD instrument panel	-
LCD instrument size	<ul style="list-style-type: none">• 4.2 inches
Interior rearview mirror function	<ul style="list-style-type: none">• Automatic anti-glare

Intelligent configuration

Connected Car Services	-
OTA Updates	-

Driving Control

Driving mode switch	<ul style="list-style-type: none">• Sport; • Economy; • Standard/Comfort
Automatic parking	<ul style="list-style-type: none">•
Hill start assist	<ul style="list-style-type: none">•

Driving Hardware

Front/rear parking radar	Front •/Rear •
Driving Assistance Camera System	<ul style="list-style-type: none">• Reversing image

In-car charging

In-car charging (continued)

Multimedia/charging port	•USB;•AUX
Number of USB/Type-C ports	• 1 in the front row/2 in the back row
Luggage compartment 12V power socket	•

"●" = Standard equipment

"_" = Not available

"○" = Optional equipment.

Note: These are Chinese market vehicles. Warranty coverage is not available outside of China.