

Vehicle Detail Report

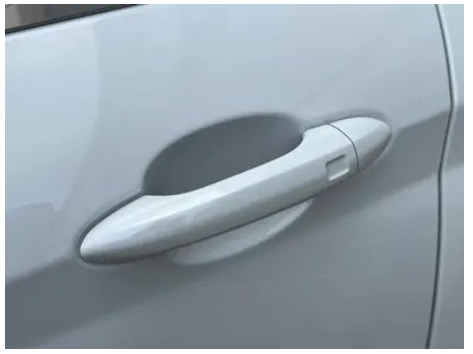
Jetour X70 PLUS 2023 1.6T DCT Strong person
5 seat

Basic Information

Brand	Jetour
Mileage	16,000 km
Color	White
First Registration	2023-09-01
Transfer Count	0

Vehicle Images







Vehicle Condition

1. Original metal body panels with factory paint.

Configuration Information

Model Information

Model Name	Jetour X70 PLUS 2023 1.6T DCT Strong person 5 seat
Launch Date	2022.11

Basic parameters

Vehicle Class	Mid-size SUV
Energy Type	Gasoline
Maximum Power (kW)	145
Maximum Torque (N·m)	290
Transmission	7-speed wet dual-clutch
Body Type	SUV
Engine	1.6T 197 horsepower L4
Dimensions (L×W×H) (mm)	4749*1900*1720
Official 0-100 km/h Acceleration (s)	-
Top Speed (km/h)	180
Curb Weight (kg)	1647
Maximum Gross Weight (kg)	2195
NEDC Combined Fuel Consumption (L/100km)	8.1
WLTP Combined Fuel Consumption (L/100km)	7.96
First Owner Warranty Policy	Lifetime Warranty/Non-operational (Liability Exemption Terms Subject to Official)

engine

Engine Model	SQRF4J16C
---------------------	-----------

engine (continued)

Displacement (mL)	1598
Displacement (L)	1.6
Induction Type	Turbocharging
Cylinder Arrangement	L
Number of Cylinders	4
Valves per Cylinder	4
Compression Ratio	9.9
Valve Train	DOHC
Bore (mm)	77
Stroke (mm)	85.8
Maximum Power (PS)	197
Max Power Speed (rpm)	5500
Max Torque Speed (rpm)	2000-4000
Maximum net power (kW)	140
Fuel Grade	92.
Fuel Delivery System	Direct injection
Cylinder Head Material	Aluminum alloy
Cylinder Block Material	Aluminum alloy
Engine layout	Horizontal
Engine-specific technologies	DVVT

Screen/System

Central control color screen	<ul style="list-style-type: none">• Touch LCD screen
Infotainment Screen Size	<ul style="list-style-type: none">• 10.25 inches
Bluetooth/In-car Phone	<ul style="list-style-type: none">•
Smartphone Integration/Mirroring	<ul style="list-style-type: none">• HUAWEI HiCar support
Voice recognition control system	<ul style="list-style-type: none">• Multimedia system;• Navigation;• Telephone;• Air conditioning;• Sunroof;• Windows
Voice wake-up recognition by region	<ul style="list-style-type: none">• Single area

Body

Length (mm)	4749
Width (mm)	1900

Body (continued)

Height (mm)	1720
Wheelbase (mm)	2745
Front Track (mm)	1610
Rear Track (mm)	1615
Door Opening Type	swing door
Number of Doors	5
Number of Seats	5
Fuel Tank Capacity (L)	57
Trunk volume (L)	438
Drag Coefficient (Cd)	-
Approach Angle (°)	19
Departure Angle (°)	18

Gearbox

Abbreviation	7-speed wet dual-clutch
Number of Gears	7
Transmission Type	Wet Dual-Clutch Transmission (DCT)

Chassis steering

Drive Type	Front-engine, Front-wheel drive (FF)
Front Suspension Type	MacPherson independent suspension
Rear Suspension Type	Multi-link independent suspension
Power Steering Type	Electric power assistance
Vehicle structure	bearing type

Seat Configuration

Seat Material	<ul style="list-style-type: none">• Imitation leather
Main seat adjustment	<ul style="list-style-type: none">• Front and rear adjustment;• Backrest adjustment;• Height adjustment (2-way)
Co-seat adjustment method	<ul style="list-style-type: none">• Front and rear adjustment;• Backrest adjustment
Electric adjustment of driver's seat and passenger seat	Main/Deputy-
Front passenger seat rear adjustable buttons	-
Second row seat adjustment	<ul style="list-style-type: none">• Backrest adjustment

Seat Configuration (continued)

Rear seat folding	• Proportional down
Front/rear center armrest	Front •/Rear •
Rear cup holder	•

Active safety

Anti-lock Braking System (ABS)	•
Electronic Brakeforce Distribution (EBD/CBC)	•
Brake Assist System (EBA/BAS/BA)	•
Traction Control System (ASR/TCS/TRC)	•
Electronic Stability Control (ESC/ESP/DSC)	•
Tire Pressure Monitoring System (TPMS)	• Tire pressure display
Seat Belt Reminder	• Front row
ISOFIX Child Seat Anchors	•
Lane Departure Warning System (LDWS)	-
Autonomous Emergency Braking (AEB)	-
Driver Fatigue Detection	•
Emergency Call System (eCall)	•
Roll-Over Protection System	•

Air conditioning/refrigerator

Air conditioning temperature control method	• Manual air conditioning
Rear Independent Climate Control	-
Rear seat air vents	•
Temperature zone control	-
Car air purifier	-
In-cabin PM2.5 Filter	•

Passive safety

Driver/passenger airbag	Main •/Deputy •
--------------------------------	-----------------

Passive safety (continued)

Front/rear side airbags	Front •/Rear-
Front/rear head airbags (curtain airbags)	-

Wheel brake

Front Brake Type	Ventilation disc
Rear Brake Type	Disc
Parking brake type	Electronic Parking
Front Tire Size	235/55 R19
Rear Tire Size	235/55 R19
Spare Tire Size	Not full-size

Audio/Interior Lighting

Number of speakers	• 6 speakers
Interior ambient lighting	• Monochrome

Driving functions

Navigation traffic information display	•
Lane assist	-
Lane Keeping Assist System	-
Cruise control system	• Cruise control
Satellite navigation system	•
Map Brand	• Gaud • Baidu • Tencent
Parking Assist	-

Exterior lighting

Low beam light source	•LED
High beam light source	•LED
LED daytime running lights	•
Adaptive high and low beam	-
Automatic headlights	•
Height-adjustable headlights	•
Headlight Delay Off	•
Turn signal lamp	•

Exterior mirrors

Exterior mirrors (continued)

Exterior mirror function	<ul style="list-style-type: none">• Electric adjustment;• Electric folding;• Rearview mirror heating;• Automatic folding when locked
---------------------------------	---

Appearance/anti-theft

Rim material	<ul style="list-style-type: none">• Aluminum alloy
Electronic engine immobilizer	<ul style="list-style-type: none">•
Central locking system in the car	<ul style="list-style-type: none">•
Key Type	<ul style="list-style-type: none">• Remote key
Keyless start system	<ul style="list-style-type: none">•
Keyless entry function	<ul style="list-style-type: none">• Driving position
Roof rack	<ul style="list-style-type: none">•
Remote start function	<ul style="list-style-type: none">•

Skylight/Glass

Sunroof Type	<ul style="list-style-type: none">• Openable panoramic sunroof
Front/rear electric windows	Front •/Rear •
One-touch window lifting function	<ul style="list-style-type: none">• Full vehicle
Window anti-pinch function	<ul style="list-style-type: none">•
Car makeup mirror	<ul style="list-style-type: none">• Main driver's lamp;• co-pilot's lamp
Rear wiper	<ul style="list-style-type: none">•
Rain sensor wiper function	<ul style="list-style-type: none">• Rainfall-sensing

Interior and exterior color

Exterior Color	Starry Black #000000 Glacier White #F0F0F0 phantom gray #606876 dragon crystal purple #421B50 Deep Sea Blue #0B3080 Interstellar Black #000000 Rising Sun Red #82011F
Interior Color	Black Red #000000 #FF0000 Black #000000 Black Gray #000000 #AFAFAF

Steering wheel/interior mirror

Steering Wheel Material	<ul style="list-style-type: none">• Cortex
Steering wheel position adjustment	<ul style="list-style-type: none">• Manual up and down front and rear adjustment

Steering wheel/interior mirror (continued)

Multi-function steering wheel	<ul style="list-style-type: none">•
Heated Steering Wheel	-
Steering wheel memory	-
Trip computer display screen	<ul style="list-style-type: none">• Color
Full LCD instrument panel	<ul style="list-style-type: none">•
LCD instrument size	<ul style="list-style-type: none">• 10.25 inches
Interior rearview mirror function	<ul style="list-style-type: none">• Manual anti-glare
Gear shifting	<ul style="list-style-type: none">• Electronic gear shift

Intelligent configuration

Connected Car Services	<ul style="list-style-type: none">•
OTA Updates	<ul style="list-style-type: none">•
4G/5G Network	<ul style="list-style-type: none">•4G
Mobile APP remote function	<ul style="list-style-type: none">• Vehicle start;• Vehicle status check/diagnostics;• Vehicle location / find my car;• Service/repair appointment
Wi-Fi hotspots	<ul style="list-style-type: none">•

Driving Control

Driving mode switch	<ul style="list-style-type: none">• Sport;• Economy;• Standard/Comfort
Automatic parking	<ul style="list-style-type: none">•
Steep slope descent	<ul style="list-style-type: none">•
Hill start assist	<ul style="list-style-type: none">•

Driving Hardware

Front/rear parking radar	Front-/Rear •
Driving Assistance Camera System	<ul style="list-style-type: none">• 360-degree panoramic image
Number of cameras	<ul style="list-style-type: none">• 4
Number of ultrasonic radars	<ul style="list-style-type: none">• 4
Transparent chassis/540-degree imaging	<ul style="list-style-type: none">•

In-car charging

Multimedia/charging port	<ul style="list-style-type: none">•USB
Number of USB/Type-C ports	<ul style="list-style-type: none">• 2 in the front row/2 in the back row

In-car charging (continued)

Luggage compartment 12V power socket

•

"●" = Standard equipment

"-" = Not available

"○" = Optional equipment.

Note: These are Chinese market vehicles. Warranty coverage is not available outside of China.