

Vehicle Detail Report

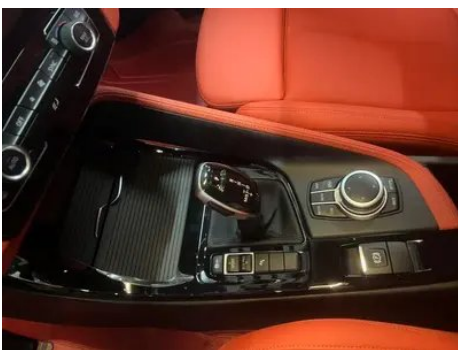
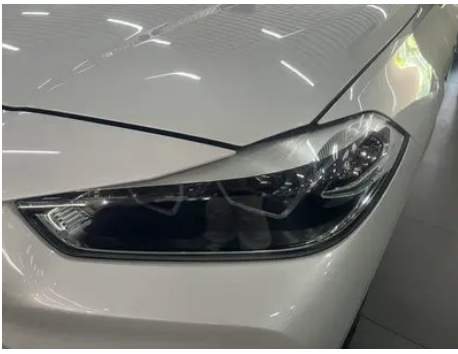
BMW X2 2021 sDrive25i M Sports suit

Basic Information

Brand	BMW
Mileage	58,000 km
Color	White
First Registration	2021-10-01
Transfer Count	0

Vehicle Images







Vehicle Condition

1. Original metal body panels with factory paint.

Configuration Information

Model Information

Model Name	BMW X2 2021 sDrive25i M Sports suit
Launch Date	2021.04

Basic parameters

Vehicle Class	Compact SUV
Energy Type	Gasoline
Maximum Power (kW)	141
Maximum Torque (N·m)	280
Transmission	7-speed wet dual-clutch
Body Type	SUV
Engine	2.0L 192 hp L4
Dimensions (L×W×H) (mm)	4379*1824*1555
Official 0-100 km/h Acceleration (s)	7.7
Top Speed (km/h)	227
Curb Weight (kg)	-
Maximum Gross Weight (kg)	-
NEDC Combined Fuel Consumption (L/100km)	6.2

engine

Engine Model	B48A20C
Displacement (mL)	1998
Displacement (L)	2.0
Induction Type	Turbocharging
Cylinder Arrangement	L

engine (continued)

Number of Cylinders	4
Valves per Cylinder	4
Valve Train	DOHC
Maximum Power (PS)	192
Max Power Speed (rpm)	5000-6000
Max Torque Speed (rpm)	1350-4600
Maximum net power (kW)	141
Fuel Grade	95.
Fuel Delivery System	Direct injection
Cylinder Head Material	Aluminum alloy
Cylinder Block Material	Aluminum alloy
Engine layout	Horizontal

Screen/System

Central control color screen	<ul style="list-style-type: none">• Touch LCD screen
Infotainment Screen Size	<ul style="list-style-type: none">• 10.25 inches
Bluetooth/In-car Phone	<ul style="list-style-type: none">•
Smartphone Integration/Mirroring	<ul style="list-style-type: none">• Apple CarPlay support;• Baidu CarLife support
Voice recognition control system	<ul style="list-style-type: none">• Multimedia system;• Telephone

Body

Length (mm)	4379
Width (mm)	1824
Height (mm)	1555
Wheelbase (mm)	2670
Front Track (mm)	1565
Rear Track (mm)	1564
Door Opening Type	swing door
Number of Doors	5
Number of Seats	5
Fuel Tank Capacity (L)	61
Trunk volume (L)	-
Drag Coefficient (Cd)	-
Approach Angle (°)	16

Body (continued)

Departure Angle (°)	24
----------------------------	----

Gearbox

Abbreviation	7-speed wet dual-clutch
Number of Gears	7
Transmission Type	Wet Dual-Clutch Transmission (DCT)

Chassis steering

Drive Type	Front-engine, Front-wheel drive (FF)
Front Suspension Type	MacPherson independent suspension
Rear Suspension Type	Multi-link independent suspension
Power Steering Type	Electric power assistance
Vehicle structure	bearing type

Seat Configuration

Seat Material	• Imitation leather
Main seat adjustment	• Front and rear adjustment; • Backrest adjustment; • Height adjustment (4-way); • Leg support adjustment
Co-seat adjustment method	• Front and rear adjustment; • Backrest adjustment; • Height adjustment (4-way); • Leg support adjustment
Electric adjustment of driver's seat and passenger seat	Main •/Auxiliary ○ Driver's seat electric adjustment (USD 515)
Front seat functions	○ Heating (USD 441)
Electric seat memory function	• Driving position
Front passenger seat rear adjustable buttons	-
Second row seat adjustment	• Backrest adjustment
Rear seat folding	• Proportional down
Front/rear center armrest	Front •/Rear •
Rear cup holder	•

Active safety

Anti-lock Braking System (ABS)	•
Electronic Brakeforce Distribution (EBD/CBC)	•

Active safety (continued)

Brake Assist System (EBA/BAS/BA)	•
Traction Control System (ASR/TCS/TRC)	•
Electronic Stability Control (ESC/ESP/DSC)	•
Tire Pressure Monitoring System (TPMS)	• Tire pressure display
Seat Belt Reminder	• Full vehicle
ISOFIX Child Seat Anchors	•
Lane Departure Warning System (LDWS)	-
Autonomous Emergency Braking (AEB)	-
Driver Fatigue Detection	-
Emergency Call System (eCall)	•

Air conditioning/refrigerator

Air conditioning temperature control method	• Automatic air conditioning
Rear Independent Climate Control	-
Rear seat air vents	•
Temperature zone control	•
Car air purifier	-
In-cabin PM2.5 Filter	-

Passive safety

Driver/passenger airbag	Main •/Deputy •
Front/rear side airbags	Front •/Rear-
Front/rear head airbags (curtain airbags)	Front •/Rear •
Run-flat tires	•

Wheel brake

Front Brake Type	Ventilation disc
Rear Brake Type	Ventilation disc
Parking brake type	Electronic Parking
Front Tire Size	225/50 R18

Wheel brake (continued)

Rear Tire Size	225/50 R18
Spare Tire Size	None

Audio/Interior Lighting

Speaker Brand Name	○Harman/Kardon (USD 882)
Number of speakers	• 7 horn; ○ 12 horn
Interior ambient lighting	• 6 colors

Driving functions

Navigation traffic information display	-
Lane assist	-
Lane Keeping Assist System	-
Cruise control system	○Cruise Control (USD 368)
Satellite navigation system	-
Parking Assist	-

Exterior lighting

Low beam light source	•LED
High beam light source	•LED
LED daytime running lights	•
Adaptive high and low beam	-
Automatic headlights	•
Height-adjustable headlights	•
Headlight Delay Off	•

Exterior mirrors

Exterior mirror function	•Electric adjustment; •Electric folding; •Rearview mirror memory; •Rearview mirror heating; •Automatically turn down when reversing; •Automatically fold when locking the car
---------------------------------	---

Appearance/anti-theft

Rim material	• Aluminum alloy
Electric trunk	•
Electronic engine immobilizer	•

Appearance/anti-theft (continued)

Central locking system in the car	<ul style="list-style-type: none">•
Key Type	<ul style="list-style-type: none">• Remote key
Keyless start system	<ul style="list-style-type: none">•
Keyless entry function	<ul style="list-style-type: none">○ Front row (USD 515)
Appearance Kit	<ul style="list-style-type: none">• Sports style
Electric trunk position memory	<ul style="list-style-type: none">•

Skylight/Glass

Sunroof Type	<ul style="list-style-type: none">• Openable panoramic sunroof
Front/rear electric windows	Front •/Rear •
One-touch window lifting function	<ul style="list-style-type: none">• Full vehicle
Window anti-pinch function	<ul style="list-style-type: none">•
Car makeup mirror	<ul style="list-style-type: none">• Main driver's lamp; • co-pilot's lamp
Rear wiper	<ul style="list-style-type: none">•
Rain sensor wiper function	<ul style="list-style-type: none">• Rainfall-sensing

Interior and exterior color

Exterior Color	Ore White #E7E7E7 Mysterious Gray #262626 Quantum Blue #273F7C Sunset orange #DE4A29 sky blue #0078B5 obsidian gold #E8D161
Interior Color	Black/Lava Red:#000000/#AF3A21; Black:#000000; Black/Mocha:#000000/#423534

Steering wheel/interior mirror

Steering Wheel Material	<ul style="list-style-type: none">• Leather
Steering wheel position adjustment	<ul style="list-style-type: none">• Manual up and down front and rear adjustment
Multi-function steering wheel	<ul style="list-style-type: none">•
Heated Steering Wheel	-
Steering wheel memory	-
Trip computer display screen	<ul style="list-style-type: none">• Color
Full LCD instrument panel	-

Steering wheel/interior mirror (continued)

Interior rearview mirror function	• Manual anti-glare
--	---------------------

Intelligent configuration

Connected Car Services	-
OTA Updates	-

Driving Control

Driving mode switch	• Sport; • Economy; • Standard/Comfort
Automatic parking	-
Hill start assist	•
Engine start-stop technology	•

Driving Hardware

Front/rear parking radar	Front •/Rear •
Driving Assistance Camera System	• Reversing image

In-car charging

Multimedia/charging port	•USB;•Type-C
Number of USB/Type-C ports	• 2 in the front row/2 in the back row

"●" = Standard equipment

"-" = Not available

"○" = Optional equipment.

Note: These are Chinese market vehicles. Warranty coverage is not available outside of China.