

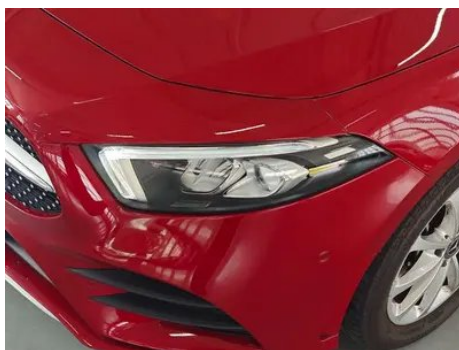
Vehicle Detail Report

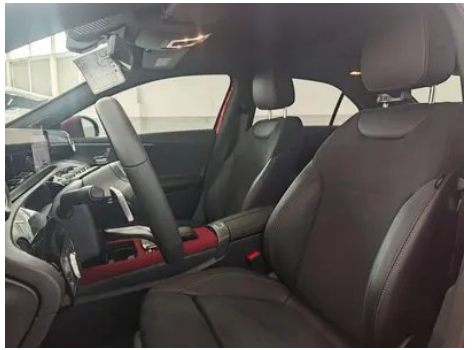
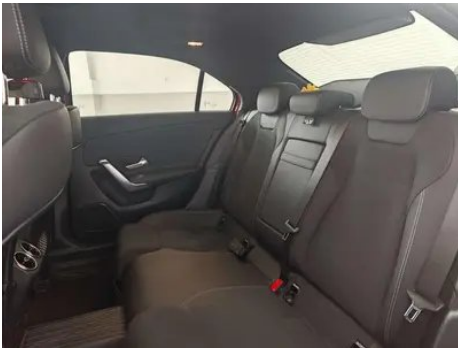
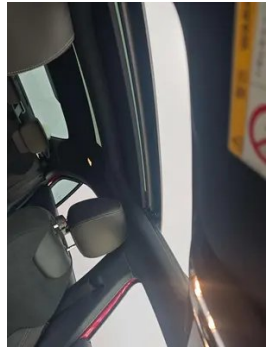
Mercedes-Benz A-Class 2022 A 200 L Sport Sedan Fashion Edition

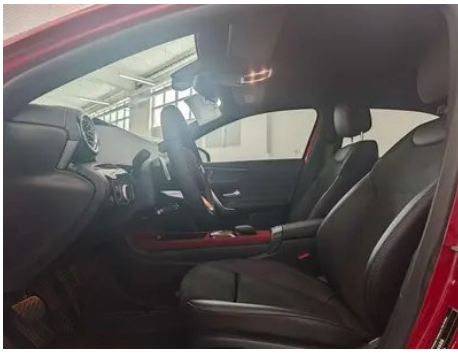
Basic Information

| | |
|--------------------|---------------|
| Brand | Mercedes-Benz |
| Mileage | 30,600 km |
| Color | Red |
| First Registration | 2021-08-01 |
| Transfer Count | 0 |

Vehicle Images







Vehicle Condition

1. Original metal body panels with factory paint.

Configuration Information

Model Information

| | |
|--------------------|---|
| Model Name | Mercedes-Benz A-Class 2022 A 200 L Sports sedan fashion model |
| Launch Date | 2021.10 |

Basic parameters

| | |
|---|-------------------------|
| Vehicle Class | compact car |
| Energy Type | Gasoline |
| Maximum Power (kW) | 120 |
| Maximum Torque (N·m) | 250 |
| Transmission | 7-speed wet dual-clutch |
| Body Type | Sedan |
| Engine | 1.3T 163 horsepower L4 |
| Dimensions (L×W×H) (mm) | 4622*1796*1459 |
| Official 0-100 km/h Acceleration (s) | 8.3 |
| Top Speed (km/h) | 230 |
| Curb Weight (kg) | 1417 |
| Maximum Gross Weight (kg) | 1910 |
| WLTP Combined Fuel Consumption (L/100km) | 5.93 |

engine

| | |
|-----------------------------|---------------|
| Engine Model | 282 914 |
| Displacement (mL) | 1332 |
| Displacement (L) | 1.3 |
| Induction Type | Turbocharging |
| Cylinder Arrangement | L |

engine (continued)

| | |
|--------------------------------|------------------|
| Number of Cylinders | 4 |
| Valves per Cylinder | 4 |
| Valve Train | DOHC |
| Maximum Power (PS) | 163 |
| Max Power Speed (rpm) | 5500 |
| Max Torque Speed (rpm) | 1620-4000 |
| Maximum net power (kW) | 120 |
| Fuel Grade | 95. |
| Fuel Delivery System | Direct injection |
| Cylinder Head Material | Aluminum alloy |
| Cylinder Block Material | Aluminum alloy |
| Engine layout | Horizontal |

Screen/System

| | |
|---|---|
| Central control color screen | <ul style="list-style-type: none">• Touch LCD screen |
| Infotainment Screen Size | <ul style="list-style-type: none">• 10.25 inches |
| Bluetooth/In-car Phone | <ul style="list-style-type: none">• |
| Smartphone Integration/Mirroring | <ul style="list-style-type: none">• Apple CarPlay support;• Baidu CarLife support |
| Voice recognition control system | <ul style="list-style-type: none">• Multimedia system;• Navigation;• Telephone;• Air conditioning;• Sunroof |
| In-vehicle intelligent system | <ul style="list-style-type: none">• MBUX |

Body

| | |
|------------------------------|------------|
| Length (mm) | 4622 |
| Width (mm) | 1796 |
| Height (mm) | 1459 |
| Wheelbase (mm) | 2789 |
| Front Track (mm) | 1567 |
| Rear Track (mm) | 1558 |
| Door Opening Type | swing door |
| Number of Doors | 4 |
| Number of Seats | 5 |
| Trunk volume (L) | - |
| Drag Coefficient (Cd) | - |

Body (continued)

| | |
|----------------------------|----|
| Approach Angle (°) | 14 |
| Departure Angle (°) | 22 |

Gearbox

| | |
|--------------------------|------------------------------------|
| Abbreviation | 7-speed wet dual-clutch |
| Number of Gears | 7 |
| Transmission Type | Wet Dual-Clutch Transmission (DCT) |

Chassis steering

| | |
|------------------------------|---|
| Drive Type | Front-engine, Front-wheel drive (FF) |
| Front Suspension Type | MacPherson independent suspension |
| Rear Suspension Type | Torsion beam non-independent suspension |
| Power Steering Type | Electric power assistance |
| Vehicle structure | bearing type |

Seat Configuration

| | |
|--|--|
| Seat Material | • Leather/suede mix and match |
| Main seat adjustment | • Front and rear adjustment; • Backrest adjustment; • Height adjustment (4-way); • Leg rest adjustment; • Lumbar support (4-way) |
| Co-seat adjustment method | • Front and rear adjustment; • Backrest adjustment; • Height adjustment (4-way); • Leg rest adjustment; • Lumbar support (4-way) |
| Electric adjustment of driver's seat and passenger seat | Main •/Deputy • |
| Front seat functions | ○ Heating (USD 382) |
| Front passenger seat rear adjustable buttons | - |
| Front/rear center armrest | Front •/Rear • |
| Rear cup holder | • |
| Sports style seats | • |

Active safety

| | |
|---|---|
| Anti-lock Braking System (ABS) | • |
| Electronic Brakeforce Distribution (EBD/CBC) | • |

Active safety (continued)

| | |
|---|-------------------------|
| Brake Assist System (EBA/BAS/BA) | • |
| Traction Control System (ASR/TCS/TRC) | • |
| Electronic Stability Control (ESC/ESP/DSC) | • |
| Tire Pressure Monitoring System (TPMS) | • Tire pressure display |
| Seat Belt Reminder | • Front row |
| ISOFIX Child Seat Anchors | • |
| Lane Departure Warning System (LDWS) | - |
| Autonomous Emergency Braking (AEB) | • |
| Driver Fatigue Detection | - |
| Forward Collision Warning (FCW) | • |
| Emergency Call System (eCall) | • |

Air conditioning/refrigerator

| | |
|--|------------------------------|
| Air conditioning temperature control method | • Automatic air conditioning |
| Rear Independent Climate Control | - |
| Rear seat air vents | • |
| Temperature zone control | - |
| Car air purifier | - |
| In-cabin PM2.5 Filter | ○(USD 221) |

Passive safety

| | |
|--|---------------------------------------|
| Driver/passenger airbag | Main •/Deputy • |
| Front/rear side airbags | Front/rear rear side airbag (USD 500) |
| Front/rear head airbags (curtain airbags) | Front •/Rear • |
| Passive pedestrian protection | • |

Wheel brake

| | |
|-------------------------|------------------|
| Front Brake Type | Ventilation disc |
| Rear Brake Type | Disc |

Wheel brake (continued)

| | |
|---------------------------|--------------------|
| Parking brake type | Electronic Parking |
| Front Tire Size | - |
| Rear Tire Size | 205/55 R17 |
| Spare Tire Size | None |

Audio/Interior Lighting

| | |
|----------------------------------|---|
| Speaker Brand Name | <input type="radio"/> Voice of Burmester Berlin (USD 838) |
| Number of speakers | <ul style="list-style-type: none">• 7 horn; <input type="radio"/> 12 horn |
| Interior ambient lighting | <ul style="list-style-type: none">• 64 colors |

Driving functions

| | |
|---|--|
| Navigation traffic information display | <ul style="list-style-type: none">• |
| Lane assist | - |
| Lane Keeping Assist System | - |
| Cruise control system | <ul style="list-style-type: none">• Cruise control |
| Satellite navigation system | <ul style="list-style-type: none">• |
| Map Brand | <ul style="list-style-type: none">• Gaud |
| Parking Assist | <ul style="list-style-type: none">• |

Exterior lighting

| | |
|-------------------------------------|--|
| Low beam light source | <ul style="list-style-type: none">•LED |
| High beam light source | <ul style="list-style-type: none">•LED |
| LED daytime running lights | <ul style="list-style-type: none">• |
| Adaptive high and low beam | <input type="radio"/> |
| Automatic headlights | <ul style="list-style-type: none">• |
| Height-adjustable headlights | <ul style="list-style-type: none">• |
| Headlight Delay Off | <ul style="list-style-type: none">• |
| Lighting features | <input type="radio"/> MULTIBEAM LED headlights (USD 794) |
| Turn headlights | <input type="radio"/> |

Exterior mirrors

| | |
|---------------------------------|---|
| Exterior mirror function | <ul style="list-style-type: none">• Electric adjustment; • Electric folding; • Rearview mirror heating; • Automatic folding when locked |
|---------------------------------|---|

Appearance/anti-theft

Appearance/anti-theft (continued)

| | |
|--|--------------------------|
| Rim material | • Aluminum alloy |
| Electronic engine immobilizer | • |
| Central locking system in the car | • |
| Key Type | • Remote key |
| Keyless start system | • |
| Keyless entry function | ○ Full vehicle (USD 706) |
| Appearance Kit | • Sports style |
| Hands-free Trunk | ○ |

Skylight/Glass

| | |
|--|---|
| Sunroof Type | • Sectional electric sunroof |
| Front/rear electric windows | Front •/Rear • |
| One-touch window lifting function | • Full vehicle |
| Window anti-pinch function | • |
| Car makeup mirror | • Main driver's lamp; • co-pilot's lamp |
| Rear wiper | - |
| Rain sensor wiper function | • Rainfall-sensing |

Interior and exterior color

| | |
|-----------------------|---|
| Exterior Color | Arctic White #F4F4F4 dimensional white #DEDEDE zircon quartz red #B00D15 Gui Li Gold #A1725C Hao Sha Yin #D7DCDC Lava Red #B52E39 mountain gray #2F302A Hoshino Blue #163885 Cosmic Black #13120E |
| Interior Color | Black: #000000; Black/Cocoa Brown: #000000/#844B41 |

Steering wheel/interior mirror

| | |
|---|--|
| Steering Wheel Material | • Leather |
| Steering wheel position adjustment | • Manual up and down front and rear adjustment |
| Multi-function steering wheel | • |
| Heated Steering Wheel | - |
| Steering wheel memory | - |

Steering wheel/interior mirror (continued)

| | |
|--|---|
| Trip computer display screen | <ul style="list-style-type: none">• Color |
| Full LCD instrument panel | <ul style="list-style-type: none">• |
| LCD instrument size | <ul style="list-style-type: none">• 10.25 inches |
| Interior rearview mirror function | <ul style="list-style-type: none">• Manual anti-glare |
| Gear shifting | <ul style="list-style-type: none">• Electronic gear shift |
| HUD Head Up Digital Display | <ul style="list-style-type: none">○(USD 1,324) |
| Steering Wheel Shift Paddles | <ul style="list-style-type: none">• |

Intelligent configuration

| | |
|-------------------------------|---|
| Connected Car Services | <ul style="list-style-type: none">• |
| OTA Updates | <ul style="list-style-type: none">• |
| 4G/5G Network | <ul style="list-style-type: none">•4G |

Driving Control

| | |
|-------------------------------------|--|
| Driving mode switch | <ul style="list-style-type: none">• Sport; • Economy; • Standard/Comfort |
| Automatic parking | <ul style="list-style-type: none">• |
| Hill start assist | <ul style="list-style-type: none">• |
| Engine start-stop technology | <ul style="list-style-type: none">• |

Driving Hardware

| | |
|---|---|
| Front/rear parking radar | Front •/Rear • |
| Driving Assistance Camera System | <ul style="list-style-type: none">• Reversing image |
| Number of cameras | <ul style="list-style-type: none">• 1 |
| Number of ultrasonic radars | <ul style="list-style-type: none">• 12 |

In-car charging

| | |
|--|---|
| Multimedia/charging port | <ul style="list-style-type: none">•Type-C |
| Number of USB/Type-C ports | <ul style="list-style-type: none">• 2 in the First row/1 in the 2nd-row |
| Mobile phone wireless charging function | <ul style="list-style-type: none">○ Front row (USD 294) |

Optional Package

Optional Package (continued)

| | |
|-------------------------|---|
| Optional Package | 18-inch Wheel Hub Multi-Link Independent Suspension (USD 1,221; Including: RQT6 45.7cm (18 inches) AMG 5-spoke light alloy wheels, multi-link independent suspension) |
|-------------------------|---|

"●" = Standard equipment

"_" = Not available

"○" = Optional equipment.

Note: These are Chinese market vehicles. Warranty coverage is not available outside of China.