

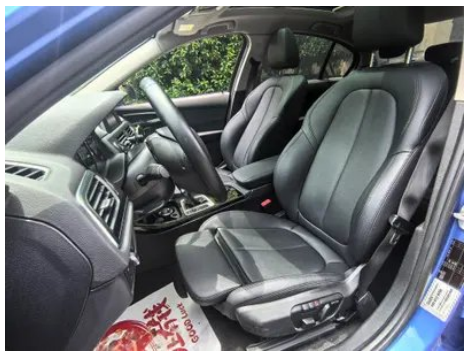
Vehicle Detail Report

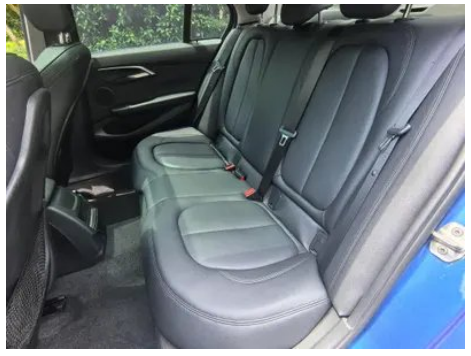
BMW 1 Series 2018 118i Sporty

Basic Information

| | |
|--------------------|------------|
| Brand | BMW |
| Mileage | 85,000 km |
| Color | Blue |
| First Registration | 2018-05-01 |
| Transfer Count | 0 |

Vehicle Images





Vehicle Condition

1. Left rear quarter panel, Paint repair, Body panel repair. 2. Right rear quarter panel, Paint repair, Body panel repair.

Configuration Information

Model Information

| | |
|--------------------|-------------------------------|
| Model Name | BMW 1 Series 2018 118i Sporty |
| Launch Date | 2018.01 |

Basic parameters

| | |
|-----------------------------|-------------|
| Vehicle Class | compact car |
| Energy Type | Gasoline |
| Maximum Power (kW) | 100 |
| Maximum Torque (N·m) | 220 |

Basic parameters (continued)

| | |
|---|----------------------------|
| Transmission | 6-speed manual integration |
| Body Type | Sedan |
| Engine | 1.5L 136 hp L3 |
| Dimensions (L×W×H) (mm) | 4456*1803*1446 |
| Official 0-100 km/h Acceleration (s) | 9.4 |
| Top Speed (km/h) | 212 |
| Curb Weight (kg) | 1380 |
| Maximum Gross Weight (kg) | - |
| NEDC Combined Fuel Consumption (L/100km) | 5.5 |

engine

| | |
|--------------------------------|------------------|
| Engine Model | B38A15C |
| Displacement (mL) | 1499 |
| Displacement (L) | 1.5 |
| Induction Type | Turbocharging |
| Cylinder Arrangement | L |
| Number of Cylinders | 3 |
| Valves per Cylinder | 4 |
| Valve Train | DOHC |
| Maximum Power (PS) | 136 |
| Max Power Speed (rpm) | 4400 |
| Max Torque Speed (rpm) | 1250 |
| Maximum net power (kW) | - |
| Fuel Grade | 95. |
| Fuel Delivery System | Direct injection |
| Cylinder Head Material | Aluminum alloy |
| Cylinder Block Material | Aluminum alloy |

Screen/System

| | |
|-------------------------------------|---|
| Central control color screen | • Ordinary LCD screen; ○ Touch LCD screen |
| Infotainment Screen Size | •6.5 inches; ○8.8 inches |
| Bluetooth/In-car Phone | • |

Body

Body (continued)

| | |
|-------------------------------|------|
| Length (mm) | 4456 |
| Width (mm) | 1803 |
| Height (mm) | 1446 |
| Wheelbase (mm) | 2670 |
| Front Track (mm) | - |
| Rear Track (mm) | - |
| Door Opening Type | - |
| Number of Doors | 4 |
| Number of Seats | 5 |
| Fuel Tank Capacity (L) | 50 |
| Trunk volume (L) | - |
| Drag Coefficient (Cd) | - |

Gearbox

| | |
|--------------------------|--|
| Abbreviation | 6-speed manual integration |
| Number of Gears | 6 |
| Transmission Type | Automatic Transmission with Manual Mode (AT) |

Chassis steering

| | |
|------------------------------|--------------------------------------|
| Drive Type | Front-engine, Front-wheel drive (FF) |
| Front Suspension Type | MacPherson independent suspension |
| Rear Suspension Type | Multi-link independent suspension |
| Power Steering Type | Electric power assistance |
| Vehicle structure | bearing type |

Seat Configuration

| | |
|----------------------------------|---|
| Seat Material | ○ Leather (USD 1,397); • Imitation leather |
| Main seat adjustment | • Front-to-back adjustment; • Backrest adjustment; • Height adjustment (2-way); • Leg rest adjustment; ○ Lumbar support (4-way) |
| Co-seat adjustment method | • Front-to-back adjustment; • Backrest adjustment; • Height adjustment (2-way); • Leg rest adjustment; ○ Lumbar support (4-way) |

Seat Configuration (continued)

| | |
|--|---|
| Electric adjustment of driver's seat and passenger seat | Main •/Deputy • |
| Front seat functions | <input type="radio"/> Heating (USD 397) |
| Electric seat memory function | • Driving position |
| Front passenger seat rear adjustable buttons | - |
| Rear seat folding | <input type="radio"/> Proportional folding |
| Front/rear center armrest | Front/rear rear seat center armrest (USD 500) |
| Rear cup holder | <input type="radio"/> |

Active safety

| | |
|---|-----------------------|
| Anti-lock Braking System (ABS) | • |
| Electronic Brakeforce Distribution (EBD/CBC) | • |
| Brake Assist System (EBA/BAS/BA) | • |
| Traction Control System (ASR/TCS/TRC) | • |
| Electronic Stability Control (ESC/ESP/DSC) | • |
| Tire Pressure Monitoring System (TPMS) | • Tire pressure alarm |
| Seat Belt Reminder | • Front row |
| ISOFIX Child Seat Anchors | • |
| Lane Departure Warning System (LDWS) | <input type="radio"/> |
| Autonomous Emergency Braking (AEB) | <input type="radio"/> |
| Driver Fatigue Detection | - |
| Emergency Call System (eCall) | • |

Air conditioning/refrigerator

| | |
|--|---------------------------|
| Air conditioning temperature control method | • Manual air conditioning |
| Rear Independent Climate Control | - |
| Rear seat air vents | - |

Air conditioning/refrigerator (continued)

| | |
|--------------------------|---|
| Temperature zone control | - |
| Car air purifier | - |
| In-cabin PM2.5 Filter | - |

Passive safety

| | |
|---|-----------------|
| Driver/passenger airbag | Main •/Deputy • |
| Front/rear side airbags | Front •/Rear- |
| Front/rear head airbags (curtain airbags) | Front •/Rear • |
| Run-flat tires | • |

Wheel brake

| | |
|--------------------|--------------------|
| Front Brake Type | Ventilation disc |
| Rear Brake Type | Disc |
| Parking brake type | Electronic Parking |
| Front Tire Size | - |
| Rear Tire Size | - |
| Spare Tire Size | None |

Audio/Interior Lighting

| | |
|---------------------------|----------------|
| Number of speakers | • 4-5 speakers |
| Interior ambient lighting | • |

Driving functions

| | |
|--|------------------|
| Navigation traffic information display | - |
| Lane assist | - |
| Lane Keeping Assist System | - |
| Cruise control system | ○ Cruise control |
| Satellite navigation system | ○ |
| Parking Assist | ○ |

Exterior lighting

| | |
|----------------------------|------|
| Low beam light source | •LED |
| High beam light source | •LED |
| LED daytime running lights | • |
| Adaptive high and low beam | - |
| Automatic headlights | • |

Exterior lighting (continued)

| | |
|-------------------------------------|-----------|
| Front fog lights | • Halogen |
| Height-adjustable headlights | • |
| Headlight Delay Off | • |

Exterior mirrors

| | |
|---------------------------------|---|
| Exterior mirror function | • Electric adjustment; ○ Electric folding; ○ Mirror memory function; ○ Heated mirrors; ○ Automatic downfolding on reverse |
|---------------------------------|---|

Appearance/anti-theft

| | |
|--|------------------|
| Rim material | • Aluminum alloy |
| Electric trunk | - |
| Electronic engine immobilizer | • |
| Central locking system in the car | • |
| Key Type | • Remote key |
| Keyless start system | • |
| Keyless entry function | ○ Front row |
| Hands-free Trunk | ○ |

Skylight/Glass

| | |
|--|---|
| Sunroof Type | • Openable panoramic sunroof |
| Front/rear electric windows | Front •/Rear • |
| One-touch window lifting function | • Full car |
| Window anti-pinch function | • |
| Car makeup mirror | • Main driver's lamp; • co-pilot's lamp |
| Rear wiper | - |
| Rain sensor wiper function | • Rainfall-sensing |

Interior and exterior color

Interior and exterior color (continued)

| | |
|-----------------------|--|
| Exterior Color | Ore white:#E7E7E7; Estolan:#1559AC; Burgundy red:#600001; Platinum silver:#605F57; Mediterranean blue:#092A57; Cashite silver:#C6C1B4; Melbourne red:#610303; Dawn gold:#BF8D32; Starlight Brown:#28160F; Snow Mountain White:#FAFAFA |
| Interior Color | Black: #000000; Black/Canberra Beige: #000000/#EEDDC4; Black/Saddle Brown: #000000/#8E5D3C; Charcoal Gray: #1F1F1F |

Steering wheel/interior mirror

| | |
|---|--|
| Steering Wheel Material | • Leather |
| Steering wheel position adjustment | • Manual up and down front and rear adjustment |
| Multi-function steering wheel | • |
| Heated Steering Wheel | - |
| Steering wheel memory | - |
| Trip computer display screen | • Color |
| Full LCD instrument panel | - |
| Interior rearview mirror function | <input type="radio"/> Automatic anti-glare (USD 191) |

Intelligent configuration

| | |
|-------------------------------|-----------------------|
| Connected Car Services | <input type="radio"/> |
| OTA Updates | - |

Driving Control

| | |
|-------------------------------------|--|
| Driving mode switch | • Sport; • Economy; • Standard/Comfort |
| Automatic parking | - |
| Hill start assist | • |
| Engine start-stop technology | • |

Driving Hardware

| | |
|---|---------------------------------------|
| Front/rear parking radar | Front <input type="radio"/> /Rear • |
| Driving Assistance Camera System | <input type="radio"/> Reversing image |

In-car charging

| | |
|---------------------------------|------|
| Multimedia/charging port | •USB |
|---------------------------------|------|

In-car charging (continued)

| | |
|-----------------------------------|----------------------|
| Number of USB/Type-C ports | • 1 in the front row |
|-----------------------------------|----------------------|

"●" = Standard equipment

"_" = Not available

"○" = Optional equipment.

Note: These are Chinese market vehicles. Warranty coverage is not available outside of China.