

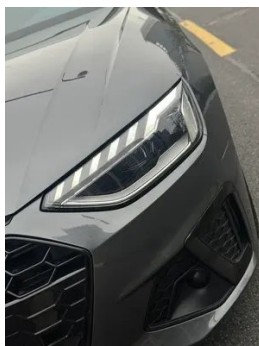
Vehicle Detail Report

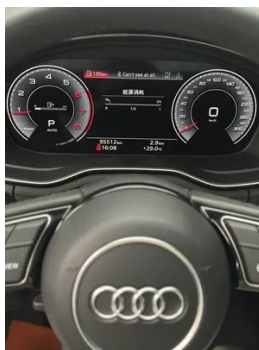
Audi A4L 2022 40 TFSI Fashion dynamic type

Basic Information

Brand	Audi
Mileage	95,000 km
Color	Dark gray
First Registration	2022-08-01
Transfer Count	1

Vehicle Images







Vehicle Condition

1. Original metal body panels with factory paint.

Configuration Information

Model Information

Model Name	Audi A4L 2022 Model 40 TFSI Stylish Dynamic Version
Launch Date	2021.12

Basic parameters

Vehicle Class	Mid-size car
Energy Type	Gasoline
Maximum Power (kW)	140
Maximum Torque (N·m)	320
Transmission	7-speed wet dual-clutch
Body Type	Sedan
Engine	2.0L 190 hp L4
Dimensions (L×W×H) (mm)	4858*1847*1439
Official 0-100 km/h Acceleration (s)	8.2
Top Speed (km/h)	230
Curb Weight (kg)	1645
Maximum Gross Weight (kg)	2080
NEDC Combined Fuel Consumption (L/100km)	6.1
WLTP Combined Fuel Consumption (L/100km)	6.76

engine

Engine Model	DTA
Displacement (mL)	1984
Displacement (L)	2.0
Induction Type	Turbocharging

engine (continued)

Cylinder Arrangement	L
Number of Cylinders	4
Valves per Cylinder	4
Valve Train	DOHC
Maximum Power (PS)	190
Max Power Speed (rpm)	-
Max Torque Speed (rpm)	-
Maximum net power (kW)	140
Fuel Grade	95.
Fuel Delivery System	Mixed injection
Cylinder Head Material	Aluminum alloy
Cylinder Block Material	Cast iron
Engine layout	Longitudinal

Screen/System

Central control color screen	<ul style="list-style-type: none">• Touch LCD screen
Infotainment Screen Size	<ul style="list-style-type: none">• 10.1 inches
Bluetooth/In-car Phone	<ul style="list-style-type: none">•
Smartphone Integration/Mirroring	<ul style="list-style-type: none">• Support CarPlay;• Support Android Auto
Voice recognition control system	<ul style="list-style-type: none">• Multimedia system;○ Navigation;• Phone
In-vehicle intelligent system	<ul style="list-style-type: none">• Audi Connect

Body

Length (mm)	4858
Width (mm)	1847
Height (mm)	1439
Wheelbase (mm)	2908
Front Track (mm)	1566
Rear Track (mm)	1549
Ground Clearance (Fully Loaded) (mm)	118
Door Opening Type	swing door
Number of Doors	4
Number of Seats	5

Body (continued)

Fuel Tank Capacity (L)	56
Trunk volume (L)	424
Drag Coefficient (Cd)	-
Approach Angle (°)	14
Departure Angle (°)	15
Minimum Turning Radius (m)	5.9

Gearbox

Abbreviation	7-speed wet dual-clutch
Number of Gears	7
Transmission Type	Wet Dual-Clutch Transmission (DCT)

Chassis steering

Drive Type	Front-engine, Front-wheel drive (FF)
Front Suspension Type	Five-link independent suspension
Rear Suspension Type	Five-link independent suspension
Power Steering Type	Electric power assistance
Vehicle structure	bearing type

Seat Configuration

Seat Material	<ul style="list-style-type: none">• Imitation leather; ○ Mix and match of leather/Alcantara (USD 735)
Main seat adjustment	<ul style="list-style-type: none">• Front and rear adjustment; • Backrest adjustment; • Height adjustment (4-way); • Leg rest adjustment; • Lumbar support (4-way)
Co-seat adjustment method	<ul style="list-style-type: none">• Front and rear adjustment; • Backrest adjustment; • Height adjustment (4-way); • Leg rest adjustment; • Lumbar support (4-way)
Electric adjustment of driver's seat and passenger seat	Main •/Deputy •
Front seat functions	○ Heating (USD 338); ○ Ventilation (USD 1,456)
Electric seat memory function	○ Driving position (USD 368)
Front passenger seat rear adjustable buttons	-
Rear seat folding	<ul style="list-style-type: none">• Proportional down

Seat Configuration (continued)

Front/rear center armrest	Front •/Rear •
Rear cup holder	-
Sports style seats	•

Active safety

Anti-lock Braking System (ABS)	•
Electronic Brakeforce Distribution (EBD/CBC)	•
Brake Assist System (EBA/BAS/BA)	•
Traction Control System (ASR/TCS/TRC)	•
Electronic Stability Control (ESC/ESP/DSC)	•
Tire Pressure Monitoring System (TPMS)	• Tire pressure alarm
Seat Belt Reminder	• Front row
ISOFIX Child Seat Anchors	•
Lane Departure Warning System (LDWS)	○(USD 441)
Autonomous Emergency Braking (AEB)	○
Driver Fatigue Detection	•
Forward Collision Warning (FCW)	○
Rear Collision Warning	○
Emergency Call System (eCall)	•

Air conditioning/refrigerator

Air conditioning temperature control method	• Automatic air conditioning
Rear Independent Climate Control	○(USD 588)
Rear seat air vents	○
Temperature zone control	○
Car air purifier	-
In-cabin PM2.5 Filter	-

Passive safety

Passive safety (continued)

Driver/passenger airbag	Main •/Deputy •
Front/rear side airbags	Front/rear rear side airbag (USD 235)
Front/rear head airbags (curtain airbags)	Front •/Rear •

Wheel brake

Front Brake Type	Ventilation disc
Rear Brake Type	Disc
Parking brake type	Electronic Parking
Front Tire Size	245/40 R18
Rear Tire Size	245/40 R18
Spare Tire Size	Not full-size

Audio/Interior Lighting

Speaker Brand Name	<input type="radio"/> Bang & Olufsen(USD 1,059)
Number of speakers	• 10 horns; <input type="radio"/> 19 horns
Interior ambient lighting	• Monochrome; <input type="radio"/> 30 colors (USD 500)
Touch reading light	•

Driving functions

Navigation traffic information display	<input type="radio"/>
Lane assist	<input type="radio"/> (USD 1,176)
Lane Keeping Assist System	<input type="radio"/> (USD 676)
Cruise control system	• Constant speed cruise; <input type="radio"/> Adaptive cruise (USD 2,382)
Satellite navigation system	<input type="radio"/> (USD 956)
Driving assistance level	<input type="radio"/> L2
Lane centering	<input type="radio"/>
Parking Assist	<input type="radio"/> (USD 191)

Exterior lighting

Low beam light source	•LED
High beam light source	•LED
LED daytime running lights	•
Adaptive high and low beam	<input type="radio"/> (USD 118)

Exterior lighting (continued)

Automatic headlights	•
Height-adjustable headlights	•
Headlight Delay Off	•
Lighting features	○ Matrix style (USD 1,206)
Turn headlights	○
Headlight rain and fog mode	•
Headlight cleaning device	○(USD 294)
Turn signal lamp	•

Exterior mirrors

Exterior mirror function	• Electric adjustment; • Electric folding; ○ Mirror memory; • Heated mirrors; • Automatic downfolding on reverse; • Automatic folding upon locking; ○ Auto-dimming (USD 118)
---------------------------------	--

Appearance/anti-theft

Rim material	• Aluminum alloy
Electric trunk	-
Electronic engine immobilizer	•
Central locking system in the car	•
Key Type	• Remote key
Keyless start system	•
Keyless entry function	○ Entire vehicle (USD 588)
Appearance Kit	• Sports style

Skylight/Glass

Sunroof Type	• Openable panoramic sunroof
Front/rear electric windows	Front •/Rear •
One-touch window lifting function	• Full car
Window anti-pinch function	•
Rear windshield sunshade	○
Car makeup mirror	• Main driver's lamp; • co-pilot's lamp

Skylight/Glass (continued)

Rear wiper	-
Rain sensor wiper function	• Rainfall-sensing
Rear side window sunshades	○ Manual

Interior and exterior color

Exterior Color	Ibis white:#F7F6F1; Sky cloud ash:#646464; Legendary black:#101010; White gold:#B7AB92; Matador red:#69091E; Exploration blue:#2B46C1; Tanggula White:#E9E9E9
Interior Color	Black:#000000; Black/Arras Red:#000000/#821E22; Black/Magma Red:#000000/#A00A0A; Black/Rock Grey:#000000/#BCBCBC; Grey:#969696

Steering wheel/interior mirror

Steering Wheel Material	• Leather
Steering wheel position adjustment	• Manual up and down front and rear adjustment
Multi-function steering wheel	•
Heated Steering Wheel	○(USD 74)
Steering wheel memory	-
Trip computer display screen	• Color
Full LCD instrument panel	•
LCD instrument size	• 12.3 inches
Interior rearview mirror function	• Manual anti-glare; ○ Automatic anti-glare (USD 221)
Gear shifting	• Electronic gear shift
HUD Head Up Digital Display	○(USD 2,632)
Steering Wheel Shift Paddles	•

Intelligent configuration

Connected Car Services	○
OTA Updates	-
4G/5G Network	•4G

Driving Control

Driving Control (continued)

Driving mode switch	• Sport; • Economy; • Standard/Comfort; • Customization/Personalization
Automatic parking	•
Hill start assist	•
Energy recovery system	•
Variable steering ratio	○(USD 1,471)
Engine start-stop technology	•

Driving Hardware

Front/rear parking radar	Front •/Rear •
Driving Assistance Camera System	• Reversing image; ○ 360-degree panoramic image (USD 544)
Total chip computing power	•0.256 TOPS;○2.5 TOPS

In-car charging

Multimedia/charging port	•USB;•Type-C
Number of USB/Type-C ports	• 2 in the front row/2 in the back row

"●" = Standard equipment

"_" = Not available

"○" = Optional equipment.

Note: These are Chinese market vehicles. Warranty coverage is not available outside of China.