

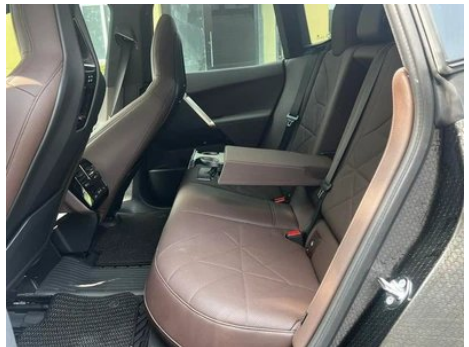
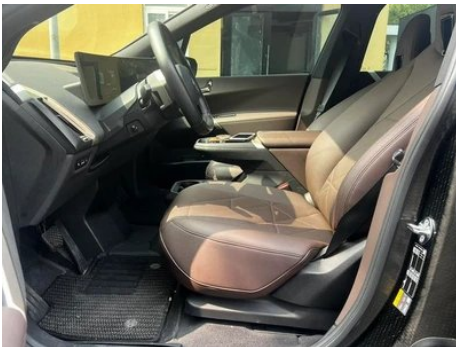
Vehicle Detail Report

BMW iX 2022 xDrive40

Basic Information

Brand	BMW
Mileage	46,000 km
Color	Black
First Registration	2023-06-01
Transfer Count	0

Vehicle Images





Vehicle Condition

1. Original metal panels and factory paint.

Configuration Information

Model Information

Model Name	BMW iX 2022 xDrive40
Launch Date	2022.01

Basic parameters

Vehicle Class	Mid-size and large SUVs
Energy Type	Battery Electric Vehicle (BEV)
Maximum Power (kW)	240
Maximum Torque (N·m)	630
Body Type	SUV
Dimensions (L×W×H) (mm)	4955*1967*1698
Official 0-100 km/h Acceleration (s)	6.1
Top Speed (km/h)	200
Curb Weight (kg)	2428
Maximum Gross Weight (kg)	3010
Fast Charging Time (h)	0.68
Slow Charging Time (h)	7.25
Electric Motor (PS)	326
Fast Charging Range (%)	80

Basic parameters (continued)

Electricity Consumption in Fuel Equivalent (L/100km)	2.04
WLTC Electric Range (km)	455

Electric Motor

Motor Type	-
Total Electric Motor Power (kW)	240
Total Electric Motor Torque (N·m)	630
Number of drive motors	Dual motors
Motor Layout	Front-mounted Rear-mounted
Battery Type	Ternary lithium battery
Battery Capacity (kWh)	76.6
Total Electric Motor Power (PS)	326
Battery Cell Brand	Contemporary Amperex Technology Co. Limited (CATL)
Battery Cooling System	Liquid cooling
Power consumption per 100 kilometers (kWh/100km)	18
Fast charging function	Support
Battery Pack Warranty	Eight years or 160000 kilometers

Screen/System

Central control color screen	<ul style="list-style-type: none">• Touch LCD screen
Infotainment Screen Size	<ul style="list-style-type: none">• 14.9 inches
Bluetooth/In-car Phone	<ul style="list-style-type: none">•
Smartphone Integration/Mirroring	<ul style="list-style-type: none">• Support CarPlay;• Support CarLife
Voice recognition control system	<ul style="list-style-type: none">• Multimedia system;• Navigation;• Telephone;• Air conditioning
In-vehicle intelligent system	<ul style="list-style-type: none">• iDrive

Body

Length (mm)	4955
Width (mm)	1967
Height (mm)	1698

Body (continued)

Wheelbase (mm)	3000
Front Track (mm)	-
Rear Track (mm)	-
Ground Clearance (Fully Loaded) (mm)	180
Door Opening Type	swing door
Number of Doors	5
Number of Seats	5
Trunk volume (L)	500-1750
Drag Coefficient (Cd)	0.25
Approach Angle (°)	19
Departure Angle (°)	21
Minimum Turning Radius (m)	6.4

Gearbox

Abbreviation	Electric vehicle single speed gearbox
Number of Gears	1
Transmission Type	Fixed Gear Ratio Transmission

Chassis steering

Drive Type	Dual-motor All-wheel Drive
Four-wheel drive	Electric four-wheel drive
Front Suspension Type	Double wishbone independent suspension
Rear Suspension Type	Multi-link independent suspension
Power Steering Type	Electric power assistance
Vehicle structure	bearing type

Seat Configuration

Seat Material	○ Fabric (USD 529), ○ Genuine leather (USD 3,735), • Imitation leather
Main seat adjustment	• Front and rear adjustment; • Backrest adjustment; • Height adjustment (4-way);○ Lumbar support (4-way)
Co-seat adjustment method	• Front and rear adjustment; • Backrest adjustment; • Height adjustment (4-way);○ Lumbar support (4-way)

Seat Configuration (continued)

Electric adjustment of driver's seat and passenger seat	Main •/Deputy •
Front seat functions	• Heating; ○ Ventilation (USD 1,132), ○ Massage
Electric seat memory function	○ Driving position; ○ Deputy driving position
Front passenger seat rear adjustable buttons	-
Rear seat folding	• Proportional down
Front/rear center armrest	Front •/Rear •
Rear cup holder	•
Second row seat functions	○ Heating

Active safety

Anti-lock Braking System (ABS)	•
Electronic Brakeforce Distribution (EBD/CBC)	•
Brake Assist System (EBA/BAS/BA)	•
Traction Control System (ASR/TCS/TRC)	•
Electronic Stability Control (ESC/ESP/DSC)	•
Tire Pressure Monitoring System (TPMS)	• Tire pressure display
Seat Belt Reminder	• Full car
ISOFIX Child Seat Anchors	•
Lane Departure Warning System (LDWS)	•
Autonomous Emergency Braking (AEB)	•
Driver Fatigue Detection	•
Forward Collision Warning (FCW)	•
Low Speed Alert	•
Emergency Call System (eCall)	•
Built-in Dashcam	•

Air conditioning/refrigerator

Air conditioning/refrigerator (continued)

Air conditioning temperature control method	• Automatic air conditioning
Rear Independent Climate Control	•
Rear seat air vents	•
Temperature zone control	•
Car air purifier	-
In-cabin PM2.5 Filter	-
Heat pump air conditioner	•

Passive safety

Driver/passenger airbag	Main •/Deputy •
Front/rear side airbags	Front •/Rear-
Front/rear head airbags (curtain airbags)	Front •/Rear •

Wheel brake

Front Brake Type	Ventilation disc
Rear Brake Type	Ventilation disc
Parking brake type	Electronic Parking
Front Tire Size	255/50 R21
Rear Tire Size	255/50 R21
Spare Tire Size	None

Audio/Interior Lighting

Speaker Brand Name	• Harman/Kardon Harman Kardon, ○ Bowers & Wilkins Bao Hua Wei Jian (USD 6,397)
Number of speakers	• 18 speakers, ○ 30 horn
Interior ambient lighting	• Multicolor

Driving functions

Navigation traffic information display	•
Lane assist	•
Lane Keeping Assist System	•
Cruise control system	• Full speed adaptive cruise
Satellite navigation system	•
Driving assistance level	•L2

Driving functions (continued)

Rear Cross Traffic Alert	•
Lane centering	•
Road traffic sign recognition	•
Tracking reverse	•
AR real-time navigation	•
Parking Assist	•
Lane Change Assist	•

Exterior lighting

Low beam light source	•LED
High beam light source	•LED
LED daytime running lights	•
Adaptive high and low beam	•
Automatic headlights	•
Height-adjustable headlights	•
Headlight Delay Off	•
Turn headlights	•

Exterior mirrors

Exterior mirror function	• Electric adjustment; • Electric folding; ○ Mirror memory; • Heated mirrors; • Automatic down-folding on reverse; • Automatic folding upon locking; • Auto-dimming
---------------------------------	---

Appearance/anti-theft

Rim material	• Aluminum alloy
Electric trunk	•
Central locking system in the car	•
Key Type	• Remote key
Keyless start system	•
Keyless entry function	○ Whole vehicle (USD 1,397)
Hands-free Trunk	○
Electric trunk position memory	•
Remote start function	•

Appearance/anti-theft (continued)

Battery preheating	<ul style="list-style-type: none">•
Electric door closing	<input type="radio"/> Whole vehicle (USD 868)
Frameless door design	<ul style="list-style-type: none">•

Skylight/Glass

Sunroof Type	<ul style="list-style-type: none">• Panoramic sunroof cannot be opened
Front/rear electric windows	Front <ul style="list-style-type: none">• /Rear <ul style="list-style-type: none">•
One-touch window lifting function	<ul style="list-style-type: none">• Full car
Window anti-pinch function	<ul style="list-style-type: none">•
Car makeup mirror	<ul style="list-style-type: none">• Main driver's lamp; • co-pilot's lamp
Rear wiper	<ul style="list-style-type: none">•
Rain sensor wiper function	<ul style="list-style-type: none">• Rainfall-sensing

Interior and exterior color

Exterior Color	Mysterious Grey:#3C3C3C; Gem Green:#252425, Ore White:#E7E7E7, Storm Grey:#505A64; Blue Ridge Mountains Color:#344C50, quantum, Blue:#0A4F8B; Emery Stone Red:#820A0A; Snow Mountain White:#FAFAFA
Interior Color	Black, Mocha:#000000/#423932, Stone gray:#5E676C, Black:#000000, black deep, Pearl shell, White, #000000/#E5E2DD; Chestnut color:#784941; Ink gray:#787878

Steering wheel/interior mirror

Steering Wheel Material	<ul style="list-style-type: none">• Leather
Steering wheel position adjustment	<ul style="list-style-type: none">• Electric up and down front and rear adjustment
Multi-function steering wheel	<ul style="list-style-type: none">•
Heated Steering Wheel	<input type="radio"/> (USD 397)
Steering wheel memory	<input type="radio"/>
Trip computer display screen	<ul style="list-style-type: none">• Color
Full LCD instrument panel	<ul style="list-style-type: none">•

Steering wheel/interior mirror (continued)

LCD instrument size	• 12.3 inches
Interior rearview mirror function	• Automatic anti-glare
Gear shifting	• Electronic gear shift
HUD Head Up Digital Display	○
ETC Device	○(USD 147)

Intelligent configuration

Connected Car Services	•
OTA Updates	•
4G/5G Network	•4G
Mobile APP remote function	• Door control; • Vehicle start-up; • Charging management; • Air conditioning control; • Vehicle condition inquiry/diagnosis; • Vehicle location/vehicle search; • Appointment maintenance/repair

Driving Control

Driving mode switch	• Sport; • Economy; • Standard/Comfort; • Customization/Personalization
Automatic parking	•
Steep slope descent	•
Hill start assist	•
Energy recovery system	•

Driving Hardware

Front/rear parking radar	Front •/Rear •
Driving Assistance Camera System	• Reversing image; ○ 360-degree panoramic image (USD 926)

In-car charging

Multimedia/charging port	•Type-C
Number of USB/Type-C ports	• 2 in the front row/2 in the back row
Mobile phone wireless charging function	• Front row
Luggage compartment 12V power socket	•

"●" = Standard equipment

"□" = Not available

"○" = Optional equipment.

Note: These are Chinese market vehicles. Warranty coverage is not available outside of China.