

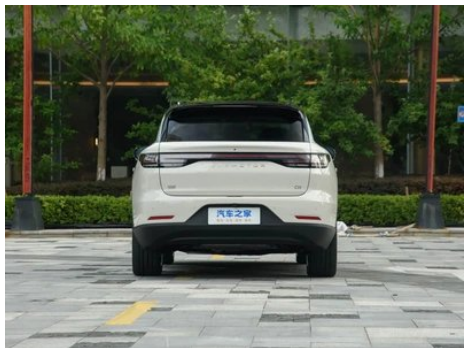
Vehicle Detail Report

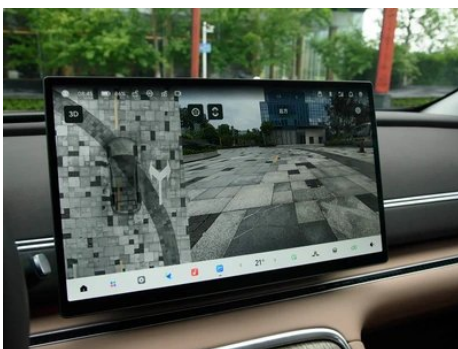
Leapmotor C11 2026 extended range 300 Lidar
Zhizun Edition

Basic Information

Color	All in-stock colors are available
Vehicle Location	In stock at Shanghai Port, Nansha Port, Horgos and other ports.
Attribute	Brand New

Vehicle Images







Configuration Information

Model Information

Model Name	Leapmotor C11 2026 extended range 300 Lidar Zhizun Edition
Launch Date	2025.07

Basic parameters

Vehicle Class	Mid-size SUV
Energy Type	Extended Range Electric Vehicle (EREV)
Maximum Power (kW)	70
Maximum Torque (N·m)	-
Transmission	Electric vehicle single speed gearbox
Body Type	SUV
Engine	Range extender 95 horsepower
Dimensions (L×W×H) (mm)	4780*1905*1658
Official 0-100 km/h Acceleration (s)	7.6
Top Speed (km/h)	170
Curb Weight (kg)	2090
Maximum Gross Weight (kg)	2465
Fast Charging Time (h)	0.3
Slow Charging Time (h)	4
Electric Motor (PS)	272
Fast Charging Range (%)	30-80
WLTC Electric Range (km)	210
WLTP Combined Fuel Consumption (L/100km)	0.41
CLTC Electric Range (km)	300

Basic parameters (continued)

First Owner Warranty Policy	Lifetime Warranty/Non-operational (Liability Exemption Terms Subject to Official)
Battery slow charging capacity range (%)	30-80
Lowest state-of-charge fuel consumption (L/100km) WLTC	5.98
Combined fuel consumption (L/100km)	2.63
Lowest state of charge fuel consumption (L/100km) CLTC	5.11

engine

Engine Model	H15R
Displacement (mL)	1499
Displacement (L)	1.5
Induction Type	Natural aspiration
Cylinder Arrangement	L
Number of Cylinders	4
Valves per Cylinder	4
Valve Train	-
Maximum Power (PS)	95
Max Power Speed (rpm)	-
Max Torque Speed (rpm)	-
Maximum net power (kW)	68
Fuel Grade	-
Fuel Delivery System	Multi-point EFI
Cylinder Head Material	Aluminum alloy
Cylinder Block Material	Aluminum alloy
Engine layout	Horizontal

Electric Motor

Motor Type	Permanent magnet/synchronous
Total Electric Motor Power (kW)	200
Total Electric Motor Torque (N·m)	320
Number of drive motors	Single motor

Electric Motor (continued)

Motor Layout	Rear
Battery Type	Lithium iron phosphate battery
Battery Capacity (kWh)	41.7
Total Electric Motor Power (PS)	272
Rear Electric Motor Max Power (kW)	200
Rear Electric Motor Max Torque (N·m)	320
Battery Cell Brand	Contemporary AmpereX Technology Co. Limited
Battery Cooling System	Liquid cooling
Power consumption per 100 kilometers (kWh/100km)	19.1
Fast charging function	Support
WLTC comprehensive range (km)	1010
Slow charging port location	Rear right side of the car
Warranty policy for first-time owners of Sandian	Lifetime Warranty/Non-operational (Liability Exemption Terms Subject to Official)
Fast charging port location	Rear right side of the car
CLTC comprehensive endurance (km)	1220

Screen/System

Central control color screen	<ul style="list-style-type: none">• Touch LCD screen
Infotainment Screen Size	<ul style="list-style-type: none">• 17.3 inches
Bluetooth/In-car Phone	<ul style="list-style-type: none">•
Smartphone Integration/Mirroring	<ul style="list-style-type: none">• HUAWEI HiCar support;• Carlink support
Voice recognition control system	<ul style="list-style-type: none">• Multimedia system;• Navigation;• Telephone;• Air conditioning;• Windows
Voice wake-up recognition by region	<ul style="list-style-type: none">• Dual Zone
In-vehicle intelligent system	<ul style="list-style-type: none">•Leapmotor OS

Screen/System (continued)

Facial Recognition	<ul style="list-style-type: none">•
App Store	<ul style="list-style-type: none">•
Central control screen resolution	<ul style="list-style-type: none">•2.8K
Voice assistant wake-up word	<ul style="list-style-type: none">• Hello, little zero
Voice wake-up word-free	<ul style="list-style-type: none">•
Continuous speech recognition	<ul style="list-style-type: none">•
See and Say	<ul style="list-style-type: none">•
Car Intelligent Chip	<ul style="list-style-type: none">• Qualcomm Snapdragon 8295P
Rear multimedia control	<ul style="list-style-type: none">•

Body

Length (mm)	4780
Width (mm)	1905
Height (mm)	1658
Wheelbase (mm)	2930
Front Track (mm)	1605
Rear Track (mm)	1595
Door Opening Type	swing door
Number of Doors	5
Number of Seats	5
Fuel Tank Capacity (L)	47
Trunk volume (L)	410-974
Drag Coefficient (Cd)	-
Approach Angle (°)	20
Departure Angle (°)	23
Minimum ground clearance without load (mm)	170

Gearbox

Abbreviation	Electric vehicle single speed gearbox
Number of Gears	1
Transmission Type	Fixed Gear Ratio Transmission

Chassis steering

Chassis steering (continued)

Drive Type	Rear-engine, Rear-wheel drive (RR)
Front Suspension Type	Double wishbone independent suspension
Rear Suspension Type	Five-link independent suspension
Power Steering Type	Electric power assistance
Vehicle structure	bearing type

Seat Configuration

Seat Material	<ul style="list-style-type: none">• Leather
Main seat adjustment	<ul style="list-style-type: none">• Front and rear adjustment;• Backrest adjustment;• Height adjustment (2-way);• Lumbar support (4-way)
Co-seat adjustment method	<ul style="list-style-type: none">• Front and rear adjustment;• Backrest adjustment;• Leg rest adjustment
Electric adjustment of driver's seat and passenger seat	Main •/Deputy •
Front seat functions	<ul style="list-style-type: none">• Heating;• Ventilation;• Massage
Electric seat memory function	<ul style="list-style-type: none">• Driving position
Front passenger seat rear adjustable buttons	-
Second row seat adjustment	<ul style="list-style-type: none">• Backrest adjustment
Rear seat folding	<ul style="list-style-type: none">• Proportional down
Front/rear center armrest	Front •/Rear •
Rear cup holder	<ul style="list-style-type: none">•
Second row seat functions	<ul style="list-style-type: none">• Heating;• Ventilation

Active safety

Anti-lock Braking System (ABS)	<ul style="list-style-type: none">•
Electronic Brakeforce Distribution (EBD/CBC)	<ul style="list-style-type: none">•
Brake Assist System (EBA/BAS/BA)	<ul style="list-style-type: none">•
Traction Control System (ASR/TCS/TRC)	<ul style="list-style-type: none">•
Electronic Stability Control (ESC/ESP/DSC)	<ul style="list-style-type: none">•

Active safety (continued)

Tire Pressure Monitoring System (TPMS)	• Tire pressure display
Seat Belt Reminder	• Front row
ISOFIX Child Seat Anchors	•
Lane Departure Warning System (LDWS)	•
Autonomous Emergency Braking (AEB)	•
Driver Fatigue Detection	•
Forward Collision Warning (FCW)	•
Rear Collision Warning	•
Low Speed Alert	•
Emergency Call System (eCall)	•
Built-in Dashcam	•
Door Opening Warning (DOW)	•
Roll-Over Protection System	•
Sentry Mode	•

Air conditioning/refrigerator

Air conditioning temperature control method	• Automatic air conditioning
Rear Independent Climate Control	-
Rear seat air vents	•
Temperature zone control	•
Car air purifier	•
In-cabin PM2.5 Filter	•
Car fragrance device	○(USD 147)
Air quality monitoring	•

Passive safety

Driver/passenger airbag	Main •/Deputy •
Front/rear side airbags	Front •/Rear-
Front/rear head airbags (curtain airbags)	Front •/Rear •

Wheel brake

Wheel brake (continued)

Front Brake Type	Ventilation disc
Rear Brake Type	Ventilation disc
Parking brake type	Electronic Parking
Front Tire Size	255/45 R20
Rear Tire Size	255/45 R20
Spare Tire Size	-

Audio/Interior Lighting

Number of speakers	<ul style="list-style-type: none">• 21 Horn
Interior ambient lighting	<ul style="list-style-type: none">• 256 color
Touch reading light	<ul style="list-style-type: none">•
Active ambient lighting	<ul style="list-style-type: none">•
Dolby Atmos	<ul style="list-style-type: none">•

Driving functions

Navigation traffic information display	<ul style="list-style-type: none">•
Lane assist	<ul style="list-style-type: none">•
Lane Keeping Assist System	<ul style="list-style-type: none">•
Cruise control system	<ul style="list-style-type: none">• Full speed adaptive cruise
Satellite navigation system	<ul style="list-style-type: none">•
Driving assistance level	<ul style="list-style-type: none">•L2
Rear Cross Traffic Alert	<ul style="list-style-type: none">•
Lane centering	<ul style="list-style-type: none">•
Road traffic sign recognition	<ul style="list-style-type: none">•
Map Brand	<ul style="list-style-type: none">• Gaud
Driver assistance systems	<ul style="list-style-type: none">•Leapmotor Pilot
High-precision map	<ul style="list-style-type: none">•
Hands-off detection	<ul style="list-style-type: none">•
Memory Parking	<ul style="list-style-type: none">•
Start reminder	<ul style="list-style-type: none">•
Parking Assist	<ul style="list-style-type: none">•
Lane Change Assist	<ul style="list-style-type: none">•
Automatic Ramp Entry/Exit Assist	<ul style="list-style-type: none">•

Driving functions (continued)

Highway sections	<ul style="list-style-type: none">• Expressway section
-------------------------	--

Exterior lighting

Low beam light source	<ul style="list-style-type: none">• LED
High beam light source	<ul style="list-style-type: none">• LED
LED daytime running lights	<ul style="list-style-type: none">•
Adaptive high and low beam	<ul style="list-style-type: none">•
Automatic headlights	<ul style="list-style-type: none">•
Height-adjustable headlights	<ul style="list-style-type: none">•
Headlight Delay Off	<ul style="list-style-type: none">•
Scene Light Language	<ul style="list-style-type: none">•

Exterior mirrors

Exterior mirror function	<ul style="list-style-type: none">• Electric adjustment;• Electric folding;• Rearview mirror memory;• Rearview mirror heating;• Automatically turn down when reversing;• Automatically fold when locking the car
---------------------------------	---

Appearance/anti-theft

Rim material	<ul style="list-style-type: none">• Aluminum alloy
Electric trunk	<ul style="list-style-type: none">•
Central locking system in the car	<ul style="list-style-type: none">•
Key Type	<ul style="list-style-type: none">• Bluetooth key;• NFC/RFID key
Keyless start system	<ul style="list-style-type: none">•
Keyless entry function	<ul style="list-style-type: none">• Driving position
Electric trunk position memory	<ul style="list-style-type: none">•
Roof rack	<ul style="list-style-type: none">•
Remote start function	<ul style="list-style-type: none">•
Battery preheating	<ul style="list-style-type: none">•
Frameless door design	<ul style="list-style-type: none">•
Hidden electric door handle	<ul style="list-style-type: none">•
Discharge to the outside	<ul style="list-style-type: none">•

Skylight/Glass

Skylight/Glass (continued)

Sunroof Type	<ul style="list-style-type: none">• Panoramic sunroof cannot be opened
Front/rear electric windows	Front •/Rear •
One-touch window lifting function	<ul style="list-style-type: none">• Full vehicle
Window anti-pinch function	<ul style="list-style-type: none">•
Car makeup mirror	<ul style="list-style-type: none">• Main driver's lamp; • co-pilot's lamp
Rear wiper	<ul style="list-style-type: none">•
Rain sensor wiper function	<ul style="list-style-type: none">• Rainfall-sensing
Rear side privacy glass	<ul style="list-style-type: none">•
Side window multi-layer soundproof glass	<ul style="list-style-type: none">• Front row

Interior and exterior color

Exterior Color	Galaxy Silver #C7CCD0 sky gray #787878 Photoelectric White #F0F0F0 Metallic Black #000000 Pine Lan Grey #787878 rime rice #E0D8D3
Interior Color	floating light ash #727A7D sandstone brown #DFBDB4

Steering wheel/interior mirror

Steering Wheel Material	<ul style="list-style-type: none">• Leather
Steering wheel position adjustment	<ul style="list-style-type: none">• Manual up and down front and rear adjustment
Multi-function steering wheel	<ul style="list-style-type: none">•
Heated Steering Wheel	<ul style="list-style-type: none">•
Steering wheel memory	-
Trip computer display screen	<ul style="list-style-type: none">• Color
Full LCD instrument panel	<ul style="list-style-type: none">•
LCD instrument size	<ul style="list-style-type: none">• 10.25 inches
Interior rearview mirror function	<ul style="list-style-type: none">• Automatic anti-glare
Gear shifting	<ul style="list-style-type: none">• Electronic gear shift
AR-HUD Augmented Reality Head-Up Display	<ul style="list-style-type: none">•

Intelligent configuration

Connected Car Services	<ul style="list-style-type: none">•
OTA Updates	<ul style="list-style-type: none">•
4G/5G Network	<ul style="list-style-type: none">•4G
Mobile APP remote function	<ul style="list-style-type: none">• Door control;• Vehicle start;• Charging management;• Vehicle status check/diagnostics;• Vehicle location / find my car;• Owner services (charging stations, gas stations, parking, etc.);• Service/ repair appointment
Car KTV	<ul style="list-style-type: none">•

Driving Control

Driving mode switch	<ul style="list-style-type: none">• Sport;• Standard/Comfort;• Customize/Personalize
Automatic parking	<ul style="list-style-type: none">•
Steep slope descent	<ul style="list-style-type: none">•
Hill start assist	<ul style="list-style-type: none">•
Energy recovery system	<ul style="list-style-type: none">•
Variable suspension function	<ul style="list-style-type: none">• Suspension damping adjustment

Driving Hardware

Front/rear parking radar	Front •/Rear •
Driving Assistance Camera System	<ul style="list-style-type: none">• 360-degree panoramic image;• Vehicle side blind area image
Front perception camera	<ul style="list-style-type: none">• Binocular
Number of cameras	<ul style="list-style-type: none">• 11
Number of ultrasonic radars	<ul style="list-style-type: none">• 12
Transparent chassis/540-degree imaging	<ul style="list-style-type: none">•
Millimeter wave radar quantity	<ul style="list-style-type: none">• 3
Assisted driving chip	<ul style="list-style-type: none">• Qualcomm Xiaolong 8650
LiDAR Brand	<ul style="list-style-type: none">•HESAI Technology
LiDAR Model	<ul style="list-style-type: none">•AT128
Number of LiDARs	<ul style="list-style-type: none">• 1
Laser radar line number	<ul style="list-style-type: none">• 128 line
Number of cameras in the car	<ul style="list-style-type: none">• 1

Driving Hardware (continued)

Front perception camera pixels	•USD 1,176,471
Environmental awareness camera pixels	•USD 441,176
Surround view camera pixels	•USD 441,176

In-car charging

Multimedia/charging port	•USB;•Type-C
Number of USB/Type-C ports	• 2 in the front row/2 in the back row
Mobile phone wireless charging function	• Front row
Luggage compartment 12V power socket	•
USB/Type-C maximum charging power	•60W
Mobile phone wireless charging power	•50W

"●" = Standard equipment

"-" = Not available

"○" = Optional equipment.

Note: These are Chinese market vehicles. Warranty coverage is not available outside of China.