

Vehicle Detail Report

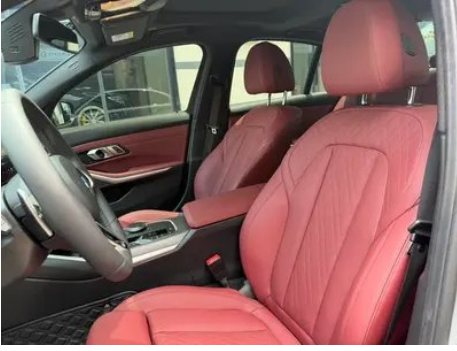
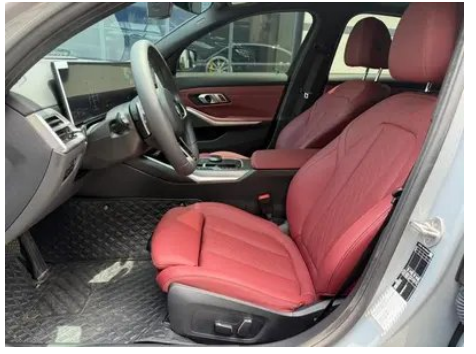
BMW 3 Series 2025 330i M Sports Night Suit

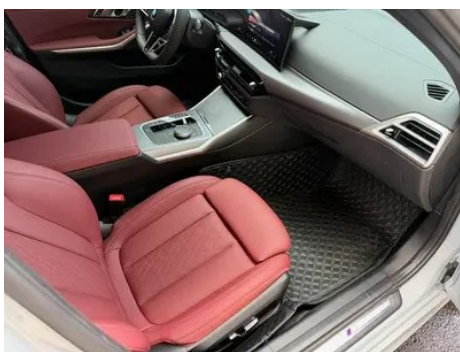
Basic Information

Brand	BMW
Mileage	13,000 km
Color	Silver-gray
First Registration	2025-05-01
Transfer Count	0

Vehicle Images







Vehicle Condition

1. Original metal body panels with factory paint.

Configuration Information

Model Information

Model Name	BMW 3 Series 2025 330i M Sports Night Suit
Launch Date	2024.09

Basic parameters

Vehicle Class	Mid-size car
Energy Type	Gasoline
Maximum Power (kW)	180
Maximum Torque (N·m)	400
Transmission	8-gear manual integration
Body Type	Sedan
Engine	2.0T 245 horsepower L4
Dimensions (L×W×H) (mm)	4728*1827*1452
Official 0-100 km/h Acceleration (s)	6.3
Top Speed (km/h)	250
Curb Weight (kg)	1608
Maximum Gross Weight (kg)	2060
WLTP Combined Fuel Consumption (L/100km)	7

engine

Engine Model	B48B20G
Displacement (mL)	1998
Displacement (L)	2.0
Induction Type	Turbocharging
Cylinder Arrangement	L

engine (continued)

Number of Cylinders	4
Valves per Cylinder	4
Valve Train	DOHC
Maximum Power (PS)	245
Max Power Speed (rpm)	4500-6500
Max Torque Speed (rpm)	1600-4000
Maximum net power (kW)	180
Fuel Grade	95.
Fuel Delivery System	Direct injection
Cylinder Head Material	Aluminum alloy
Cylinder Block Material	Aluminum alloy
Engine layout	Longitudinal

Screen/System

Central control color screen	<ul style="list-style-type: none">• Touch LCD screen
Infotainment Screen Size	<ul style="list-style-type: none">• 14.9 inches
Bluetooth/In-car Phone	<ul style="list-style-type: none">•
Smartphone Integration/ Mirroring	<ul style="list-style-type: none">• Apple CarPlay support
Voice recognition control system	<ul style="list-style-type: none">• Multimedia system;• Navigation;• Telephone;• Air conditioning;• Windows
In-vehicle intelligent system	<ul style="list-style-type: none">• iDrive
Car Intelligent Chip	<ul style="list-style-type: none">• Qualcomm Snapdragon 8155

Body

Length (mm)	4728
Width (mm)	1827
Height (mm)	1452
Wheelbase (mm)	2851
Front Track (mm)	1583
Rear Track (mm)	1568
Door Opening Type	swing door
Number of Doors	4
Number of Seats	5
Fuel Tank Capacity (L)	59

Body (continued)

Trunk volume (L)	-
Drag Coefficient (Cd)	-
Approach Angle (°)	15
Departure Angle (°)	18

Gearbox

Abbreviation	8-gear manual integration
Number of Gears	8
Transmission Type	Automatic Transmission with Manual Mode (AT)

Chassis steering

Drive Type	Front-engine, Rear-wheel drive (FR)
Front Suspension Type	Dual-ball-joint MacPherson independent suspension
Rear Suspension Type	Multi-link independent suspension
Power Steering Type	Electric power assistance
Vehicle structure	bearing type

Seat Configuration

Seat Material	• Imitation leather
Main seat adjustment	• Front and rear adjustment; • Backrest adjustment; • Height adjustment (4-way); • Leg rest adjustment; ○ Lumbar support (4-way)(USD 206)
Co-seat adjustment method	• Front and rear adjustment; • Backrest adjustment; • Height adjustment (4-way); • Leg support adjustment
Electric adjustment of driver's seat and passenger seat	Main •/Deputy •
Front seat functions	○ Heating (USD 515)
Electric seat memory function	• Driving position
Front passenger seat rear adjustable buttons	-
Front/rear center armrest	Front •/Rear •
Rear cup holder	•

Active safety

Anti-lock Braking System (ABS)	•
---------------------------------------	---

Active safety (continued)

Electronic Brakeforce Distribution (EBD/CBC)	•
Brake Assist System (EBA/BAS/BA)	•
Traction Control System (ASR/TCS/TRC)	•
Electronic Stability Control (ESC/ESP/DSC)	•
Tire Pressure Monitoring System (TPMS)	• Tire pressure display
Seat Belt Reminder	• Front row
ISOFIX Child Seat Anchors	•
Lane Departure Warning System (LDWS)	•
Autonomous Emergency Braking (AEB)	•
Driver Fatigue Detection	•
Forward Collision Warning (FCW)	•
Emergency Call System (eCall)	•
Built-in Dashcam	•

Air conditioning/refrigerator

Air conditioning temperature control method	• Automatic air conditioning
Rear Independent Climate Control	•
Rear seat air vents	•
Temperature zone control	•
Car air purifier	-
In-cabin PM2.5 Filter	•

Passive safety

Driver/passenger airbag	Main •/Deputy •
Front/rear side airbags	Front •/Rear-
Front/rear head airbags (curtain airbags)	Front •/Rear •
Run-flat tires	•
Passive pedestrian protection	•

Wheel brake

Front Brake Type	Ventilation disc
Rear Brake Type	Ventilation disc
Parking brake type	Electronic Parking
Front Tire Size	225/45 R18
Rear Tire Size	255/40 R18
Spare Tire Size	None

Audio/Interior Lighting

Speaker Brand Name	• Harman/Kardon Harman Kardon
Number of speakers	• 16 speakers
Interior ambient lighting	•9 colors

Driving functions

Navigation traffic information display	•
Lane assist	•
Lane Keeping Assist System	○
Cruise control system	• Full speed adaptive cruise
Satellite navigation system	•
Driving assistance level	○L2
Rear Cross Traffic Alert	○
Lane centering	○
Road traffic sign recognition	•
Tracking reverse	•
Parking Assist	•
Lane Change Assist	○

Exterior lighting

Low beam light source	•LED
High beam light source	•LED
LED daytime running lights	•
Adaptive high and low beam	•
Automatic headlights	•
Height-adjustable headlights	•

Exterior lighting (continued)

Headlight Delay Off	•
Turn headlights	○(USD 1,338)

Exterior mirrors

Exterior mirror function	• Electric adjustment; • Electric folding; • Rearview mirror memory; • Rearview mirror heating; • Automatic downturning when reversing; • Automatic folding when locked; • Automatic anti-glare
---------------------------------	---

Appearance/anti-theft

Rim material	• Aluminum alloy
Electric trunk	○
Electronic engine immobilizer	•
Central locking system in the car	•
Key Type	• Remote key
Keyless start system	•
Keyless entry function	• Full vehicle
Appearance Kit	• Sports style
Hands-free Trunk	○
Remote start function	•
Active closed grille	•

Skylight/Glass

Sunroof Type	• Electric sunroof
Front/rear electric windows	Front •/Rear •
One-touch window lifting function	• Full vehicle
Window anti-pinch function	•
Car makeup mirror	• Main driver's lamp; • co-pilot's lamp
Rear wiper	-
Rain sensor wiper function	• Rainfall-sensing

Interior and exterior color

Interior and exterior color (continued)

Exterior Color	Ore White #E7E7E7 Skyscraper Gray #808686 Brooklyn Grey #B8BBBF Carbon black #232A30 Coastal Blue #0085A4 Speed Blue #5B82AC
Interior Color	Black Volcano Red #000000 #8A3D47 Black Mocha color #000000 #423534 Black #000000 Volcano Red Black #8A3D47 #000000

Steering wheel/interior mirror

Steering Wheel Material	<ul style="list-style-type: none">• Leather
Steering wheel position adjustment	<ul style="list-style-type: none">• Manual up and down front and rear adjustment
Multi-function steering wheel	<ul style="list-style-type: none">•
Heated Steering Wheel	-
Steering wheel memory	-
Trip computer display screen	<ul style="list-style-type: none">• Color
Full LCD instrument panel	<ul style="list-style-type: none">•
LCD instrument size	<ul style="list-style-type: none">• 12.3 inches
Interior rearview mirror function	<ul style="list-style-type: none">• Automatic anti-glare
Gear shifting	<ul style="list-style-type: none">• Electronic gear shift
HUD Head Up Digital Display	<ul style="list-style-type: none">•
ETC Device	○(USD 147)
Steering Wheel Shift Paddles	<ul style="list-style-type: none">•

Intelligent configuration

Connected Car Services	<ul style="list-style-type: none">•
OTA Updates	<ul style="list-style-type: none">•
4G/5G Network	•4G;○5G(USD 441)
Mobile APP remote function	<ul style="list-style-type: none">• Door control;• Vehicle start;• Lighting control;• Climate control;• Vehicle status check/diagnostics;• Vehicle location / find my car
Wi-Fi hotspots	<ul style="list-style-type: none">•

Driving Control

Driving Control (continued)

Driving mode switch	• Sport; • Economy; • Standard/Comfort; • Customization/Personalization
Automatic parking	•
Hill start assist	•
Engine start-stop technology	•

Driving Hardware

Front/rear parking radar	Front •/Rear •
Driving Assistance Camera System	• 360-degree panoramic image
Front perception camera	• Monocular
Number of cameras	• 5
Number of ultrasonic radars	• 12
Millimeter wave radar quantity	• 3; ○ 5

In-car charging

Multimedia/charging port	•USB;•Type-C
Number of USB/Type-C ports	• 2 in the front row/2 in the back row
Mobile phone wireless charging function	○ Front row (USD 279)

Optional Package

Optional Package	Entertainment Suit 2 (1900 yuan Contains Wireless phone charging)
-------------------------	---

"●" = Standard equipment

"_" = Not available

"○" = Optional equipment.

Note: These are Chinese market vehicles. Warranty coverage is not available outside of China.