

# Vehicle Detail Report

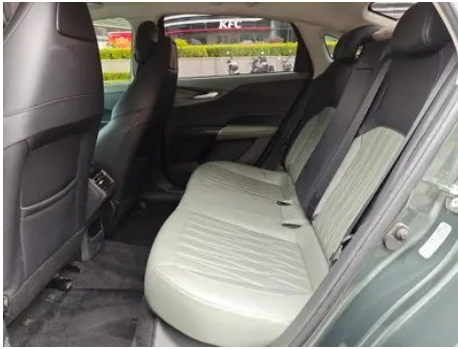
## Changan Lamore 2023 1.5T GDI Automatic pilot type

### Basic Information

Brand	Changan
Mileage	34,000 km
Color	Green
First Registration	2023-12-01
Transfer Count	0

### Vehicle Images





## Vehicle Condition

1. Right front door, Body panel repair. 2. Right rear door, Body panel repair. 3. Trunk lid, Body panel repair. 4. Right front fender, Body panel repair. 5. Left rear quarter panel, Paint repair. 6. Right rear quarter panel, Body panel repair. 7. Right headlight, Replaced.

## Configuration Information

### Model Information

<b>Model Name</b>	Changan Lamore 2023 Blue whale NE 1.5T GDI DCT Pilot type
<b>Launch Date</b>	2023.03

### Basic parameters

<b>Vehicle Class</b>	compact car
<b>Energy Type</b>	Gasoline

## Basic parameters (continued)

<b>Maximum Power (kW)</b>	125
<b>Maximum Torque (N·m)</b>	260
<b>Transmission</b>	7-speed wet dual-clutch
<b>Body Type</b>	Sedan
<b>Engine</b>	1.5T 170 horsepower L4
<b>Dimensions (L×W×H) (mm)</b>	4770*1840*1440
<b>Official 0-100 km/h Acceleration (s)</b>	-
<b>Top Speed (km/h)</b>	200
<b>Curb Weight (kg)</b>	1356
<b>Maximum Gross Weight (kg)</b>	1760
<b>WLTP Combined Fuel Consumption (L/100km)</b>	5.99

## engine

<b>Engine Model</b>	JL473ZQA
<b>Displacement (mL)</b>	1494
<b>Displacement (L)</b>	1.5
<b>Induction Type</b>	Turbocharging
<b>Cylinder Arrangement</b>	L
<b>Number of Cylinders</b>	4
<b>Valves per Cylinder</b>	4
<b>Valve Train</b>	DOHC
<b>Maximum Power (PS)</b>	170
<b>Max Power Speed (rpm)</b>	5500
<b>Max Torque Speed (rpm)</b>	1500-4000
<b>Maximum net power (kW)</b>	122
<b>Fuel Grade</b>	92.
<b>Fuel Delivery System</b>	Direct injection
<b>Cylinder Head Material</b>	Aluminum alloy
<b>Cylinder Block Material</b>	Aluminum alloy
<b>Engine layout</b>	Horizontal

## Screen/System

<b>Central control color screen</b>	<ul style="list-style-type: none"><li>• Touch LCD screen</li></ul>
-------------------------------------	--

## Screen/System (continued)

<b>Infotainment Screen Size</b>	• 13.2 inches
<b>Bluetooth/In-car Phone</b>	•
<b>Voice recognition control system</b>	• Multimedia system; • Navigation; • Telephone; • Air conditioning; • Sunroof; • Windows
<b>Facial Recognition</b>	•
<b>Car Intelligent Chip</b>	MediaTek MT8666

## Body

<b>Length (mm)</b>	4770
<b>Width (mm)</b>	1840
<b>Height (mm)</b>	1440
<b>Wheelbase (mm)</b>	2765
<b>Front Track (mm)</b>	1575
<b>Rear Track (mm)</b>	1585
<b>Door Opening Type</b>	swing door
<b>Number of Doors</b>	4
<b>Number of Seats</b>	5
<b>Fuel Tank Capacity (L)</b>	51
<b>Trunk volume (L)</b>	520
<b>Drag Coefficient (Cd)</b>	-
<b>Approach Angle (°)</b>	14
<b>Departure Angle (°)</b>	18

## Gearbox

<b>Abbreviation</b>	7-speed wet dual-clutch
<b>Number of Gears</b>	7
<b>Transmission Type</b>	Wet Dual-Clutch Transmission (DCT)

## Chassis steering

<b>Drive Type</b>	Front-engine, Front-wheel drive (FF)
<b>Front Suspension Type</b>	MacPherson independent suspension
<b>Rear Suspension Type</b>	Torsion beam non-independent suspension
<b>Power Steering Type</b>	Electric power assistance
<b>Vehicle structure</b>	bearing type

## Seat Configuration

<b>Seat Material</b>	• Imitation leather
----------------------	---------------------

## Seat Configuration (continued)

<b>Main seat adjustment</b>	<ul style="list-style-type: none"><li>• Front and rear adjustment;</li><li>• Backrest adjustment;</li><li>• Height adjustment (2-way)</li></ul>
<b>Co-seat adjustment method</b>	<ul style="list-style-type: none"><li>• Front and rear adjustment;</li><li>• Backrest adjustment</li></ul>
<b>Electric adjustment of driver's seat and passenger seat</b>	Main/Deputy-
<b>Front passenger seat rear adjustable buttons</b>	-
<b>Front/rear center armrest</b>	Front •/Rear-
<b>Rear cup holder</b>	-

## Active safety

<b>Anti-lock Braking System (ABS)</b>	<ul style="list-style-type: none"><li>•</li></ul>
<b>Electronic Brakeforce Distribution (EBD/CBC)</b>	<ul style="list-style-type: none"><li>•</li></ul>
<b>Brake Assist System (EBA/BAS/BA)</b>	<ul style="list-style-type: none"><li>•</li></ul>
<b>Traction Control System (ASR/TCS/TRC)</b>	<ul style="list-style-type: none"><li>•</li></ul>
<b>Electronic Stability Control (ESC/ESP/DSC)</b>	<ul style="list-style-type: none"><li>•</li></ul>
<b>Tire Pressure Monitoring System (TPMS)</b>	<ul style="list-style-type: none"><li>• Tire pressure display</li></ul>
<b>Seat Belt Reminder</b>	<ul style="list-style-type: none"><li>• Front row</li></ul>
<b>ISOFIX Child Seat Anchors</b>	<ul style="list-style-type: none"><li>•</li></ul>
<b>Lane Departure Warning System (LDWS)</b>	<ul style="list-style-type: none"><li>•</li></ul>
<b>Autonomous Emergency Braking (AEB)</b>	<ul style="list-style-type: none"><li>•</li></ul>
<b>Driver Fatigue Detection</b>	<ul style="list-style-type: none"><li>•</li></ul>
<b>Forward Collision Warning (FCW)</b>	<ul style="list-style-type: none"><li>•</li></ul>
<b>Built-in Dashcam</b>	○

## Air conditioning/refrigerator

<b>Air conditioning temperature control method</b>	<ul style="list-style-type: none"><li>• Automatic air conditioning</li></ul>
<b>Rear Independent Climate Control</b>	-

## Air conditioning/refrigerator (continued)

Rear seat air vents	•
Temperature zone control	-
Car air purifier	-
In-cabin PM2.5 Filter	•

## Passive safety

Driver/passenger airbag	Main •/Deputy •
Front/rear side airbags	Front •/Rear-
Front/rear head airbags (curtain airbags)	Front •/Rear •

## Wheel brake

Front Brake Type	Ventilation disc
Rear Brake Type	Disc
Parking brake type	Electronic Parking
Front Tire Size	215/50 R17
Rear Tire Size	215/50 R17
Spare Tire Size	Not full-size

## Audio/Interior Lighting

Number of speakers	• 6 speakers
Touch reading light	•

## Driving functions

Navigation traffic information display	•
Lane assist	-
Lane Keeping Assist System	-
Cruise control system	• Full speed adaptive cruise
Satellite navigation system	•
Map Brand	• Gaud
Parking Assist	-

## Exterior lighting

Low beam light source	•LED
High beam light source	•LED
LED daytime running lights	•
Adaptive high and low beam	-

## Exterior lighting (continued)

<b>Automatic headlights</b>	<ul style="list-style-type: none"><li>•</li></ul>
<b>Height-adjustable headlights</b>	<ul style="list-style-type: none"><li>•</li></ul>
<b>Headlight Delay Off</b>	<ul style="list-style-type: none"><li>•</li></ul>

## Exterior mirrors

<b>Exterior mirror function</b>	<ul style="list-style-type: none"><li>• Electric adjustment;</li><li>• Electric folding;</li><li>• Rearview mirror heating;</li><li>• Automatic folding when locked</li></ul>
---------------------------------	---

## Appearance/anti-theft

<b>Rim material</b>	<ul style="list-style-type: none"><li>• Aluminum alloy</li></ul>
<b>Electronic engine immobilizer</b>	<ul style="list-style-type: none"><li>•</li></ul>
<b>Central locking system in the car</b>	<ul style="list-style-type: none"><li>•</li></ul>
<b>Key Type</b>	<ul style="list-style-type: none"><li>• Remote key;</li><li>• Bluetooth key</li></ul>
<b>Keyless start system</b>	<ul style="list-style-type: none"><li>•</li></ul>
<b>Keyless entry function</b>	<ul style="list-style-type: none"><li>• Driving position</li></ul>
<b>Hands-free Trunk</b>	<ul style="list-style-type: none"><li>•</li></ul>
<b>Remote start function</b>	<ul style="list-style-type: none"><li>•</li></ul>
<b>Hidden electric door handle</b>	<ul style="list-style-type: none"><li>•</li></ul>

## Skylight/Glass

<b>Sunroof Type</b>	<ul style="list-style-type: none"><li>• Openable panoramic sunroof</li></ul>
<b>Front/rear electric windows</b>	Front •/Rear •
<b>One-touch window lifting function</b>	<ul style="list-style-type: none"><li>• Full vehicle</li></ul>
<b>Window anti-pinch function</b>	<ul style="list-style-type: none"><li>•</li></ul>
<b>Car makeup mirror</b>	<ul style="list-style-type: none"><li>• Main driving position;</li><li>• First officer</li></ul>
<b>Rear wiper</b>	-
<b>Rain sensor wiper function</b>	<ul style="list-style-type: none"><li>• Speed induction type</li></ul>

## Interior and exterior color

<b>Exterior Color</b>	glitter ice crystal white #FFFFFF Andean Grey #585B62 titanium light silver gray #C6C6C6 Yao Dung Red #FF0303 Yunshan Green #29474B
-----------------------	---

## Interior and exterior color (continued)

<b>Interior Color</b>	Elegant Black #000000 Elegant Black Yunshan Green #000000 #484F4F
-----------------------	---

## Steering wheel/interior mirror

<b>Steering Wheel Material</b>	• Cortex
<b>Steering wheel position adjustment</b>	• Manual up and down front and rear adjustment
<b>Multi-function steering wheel</b>	•
<b>Heated Steering Wheel</b>	-
<b>Steering wheel memory</b>	-
<b>Trip computer display screen</b>	• Color
<b>Full LCD instrument panel</b>	-
<b>LCD instrument size</b>	• 10.25 inches
<b>Interior rearview mirror function</b>	• Manual anti-glare
<b>Gear shifting</b>	• Electronic gear shift

## Intelligent configuration

<b>Connected Car Services</b>	•
<b>OTA Updates</b>	•
<b>4G/5G Network</b>	•4G
<b>Mobile APP remote function</b>	• Door control Window control Vehicle start Climate control Vehicle Condition Query Diagnosis Vehicle positioning Find car Appointment maintenance Maintenance
<b>Wi-Fi hotspots</b>	•
<b>Car KTV</b>	○

## Driving Control

<b>Driving mode switch</b>	• Sport; • Economy; • Standard/ Comfort
<b>Automatic parking</b>	•
<b>Steep slope descent</b>	•
<b>Hill start assist</b>	•
<b>Engine start-stop technology</b>	•

## Driving Hardware

<b>Front/rear parking radar</b>	Front-/Rear •
---------------------------------	---------------

## Driving Hardware (continued)

<b>Driving Assistance Camera System</b>	• 360-degree panoramic image
<b>Number of cameras</b>	• 4
<b>Number of ultrasonic radars</b>	• 3
<b>Transparent chassis/540-degree imaging</b>	•
<b>Millimeter wave radar quantity</b>	• 1
<b>Number of cameras in the car</b>	• 1

## In-car charging

<b>Multimedia/charging port</b>	• USB
<b>Number of USB/Type-C ports</b>	• 1 front row/1 back row
<b>Mobile phone wireless charging function</b>	• Front row

---

"●" = Standard equipment

"\_" = Not available

"○" = Optional equipment.

Note: These are Chinese market vehicles. Warranty coverage is not available outside of China.