

Vehicle Detail Report

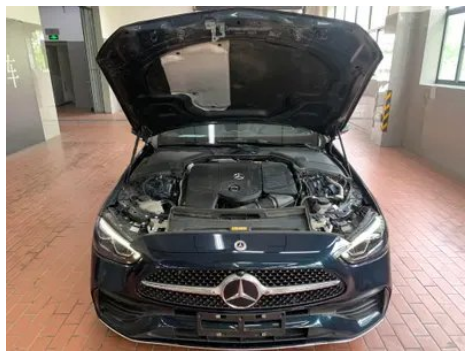
Mercedes-Benz C-Class 2024 C 200 L Sports version

Basic Information

Brand	Mercedes-Benz
Mileage	78,000 km
Color	Green
First Registration	2024-03-01
Transfer Count	0

Vehicle Images





Vehicle Condition

1. Hood, Paint repair, Body panel repair, Signs of removal, Deformation.
2. Front bumper, Replaced, Scrape, Scratch damage.
3. Rear bumper, Paint repair, Scrape, Signs of removal.
4. Left front door, Paint chip, Deformation.
5. Right front door, Paint chip.
6. Right rear door, Deformation, Scrape.
7. Right front fender, Scrape.
8. Left rear quarter panel, Scratch, Paint repair.
9. Right rear quarter panel, Deformation.
10. Left tail light, Signs of removal.

Configuration Information

Model Information

Model Name	Mercedes-Benz C-Class 2024 C 200 L Sports version
Launch Date	2023.10

Basic parameters

Vehicle Class	Mid-size car
Energy Type	Gasoline + 48V Mild Hybrid System
Maximum Power (kW)	125
Maximum Torque (N·m)	250
Transmission	9-gear manual integration
Body Type	Sedan
Engine	1.5T 170 horsepower L4
Dimensions (L×W×H) (mm)	4882*1820*1461
Official 0-100 km/h Acceleration (s)	9.2
Top Speed (km/h)	225
Curb Weight (kg)	1730
Maximum Gross Weight (kg)	2250
WLTP Combined Fuel Consumption (L/100km)	6.35

engine

Engine Model	254 915
Displacement (mL)	1496
Displacement (L)	1.5
Induction Type	Turbocharging
Cylinder Arrangement	L
Number of Cylinders	4
Valves per Cylinder	4
Valve Train	DOHC
Maximum Power (PS)	170
Max Power Speed (rpm)	5800
Max Torque Speed (rpm)	1800-4000
Maximum net power (kW)	125
Fuel Grade	95.
Fuel Delivery System	Direct injection

engine (continued)

Cylinder Head Material	Aluminum alloy
Cylinder Block Material	Aluminum alloy
Engine layout	Longitudinal

Screen/System

Central control color screen	<ul style="list-style-type: none">• Touch LCD screen
Infotainment Screen Size	<ul style="list-style-type: none">• 11.9 inches
Bluetooth/In-car Phone	<ul style="list-style-type: none">•
Smartphone Integration/Mirroring	<ul style="list-style-type: none">• Support CarPlay;• Support Android Auto
Voice recognition control system	<ul style="list-style-type: none">• Multimedia system;• Navigation;• Telephone;• Air conditioning
Voice wake-up recognition by region	<ul style="list-style-type: none">• Four areas
In-vehicle intelligent system	<ul style="list-style-type: none">• MBUX
App Store	<ul style="list-style-type: none">•
Voice assistant wake-up word	<ul style="list-style-type: none">• Hello, Mercedes
Voice wake-up word-free	<ul style="list-style-type: none">•
Continuous speech recognition	<ul style="list-style-type: none">•

Body

Length (mm)	4882
Width (mm)	1820
Height (mm)	1461
Wheelbase (mm)	2954
Front Track (mm)	1589
Rear Track (mm)	1563
Door Opening Type	swing door
Number of Doors	4
Number of Seats	5
Fuel Tank Capacity (L)	66
Trunk volume (L)	475
Drag Coefficient (Cd)	-
Approach Angle (°)	15
Departure Angle (°)	18

Gearbox

Abbreviation	9-gear manual integration
Number of Gears	9
Transmission Type	Automatic Transmission with Manual Mode (AT)

Chassis steering

Drive Type	Front-engine, Rear-wheel drive (FR)
Front Suspension Type	Multi-link independent suspension
Rear Suspension Type	Multi-link independent suspension
Power Steering Type	Electric power assistance
Vehicle structure	bearing type

Seat Configuration

Seat Material	<ul style="list-style-type: none">• Imitation leather
Main seat adjustment	<ul style="list-style-type: none">• Front and rear adjustment;• Backrest adjustment;• Height adjustment (4-way);• Leg rest adjustment;• Lumbar support (4-way)
Co-seat adjustment method	<ul style="list-style-type: none">• Front and rear adjustment;• Backrest adjustment;• Height adjustment (4-way);• Leg rest adjustment;• Lumbar support (4-way)
Electric adjustment of driver's seat and passenger seat	Main •/Deputy •
Front seat functions	<input type="radio"/> Heating (USD 441)
Front passenger seat rear adjustable buttons	<ul style="list-style-type: none">•
Front/rear center armrest	Front •/Rear •
Rear cup holder	<ul style="list-style-type: none">•
Second row seat functions	<input type="radio"/> Heating (USD 441)
Sports style seats	<ul style="list-style-type: none">•

Active safety

Anti-lock Braking System (ABS)	<ul style="list-style-type: none">•
Electronic Brakeforce Distribution (EBD/CBC)	<ul style="list-style-type: none">•
Brake Assist System (EBA/BAS/BA)	<ul style="list-style-type: none">•

Active safety (continued)

Traction Control System (ASR/TCS/TRC)	•
Electronic Stability Control (ESC/ESP/DSC)	•
Tire Pressure Monitoring System (TPMS)	• Tire pressure display
Seat Belt Reminder	• Full car
ISOFIX Child Seat Anchors	•
Lane Departure Warning System (LDWS)	•
Autonomous Emergency Braking (AEB)	•
Driver Fatigue Detection	•
Forward Collision Warning (FCW)	•
Emergency Call System (eCall)	•

Air conditioning/refrigerator

Air conditioning temperature control method	• Automatic air conditioning
Rear Independent Climate Control	-
Rear seat air vents	•
Temperature zone control	•
Car air purifier	•
In-cabin PM2.5 Filter	•

Passive safety

Driver/passenger airbag	Main •/Deputy •
Front/rear side airbags	Front •/Rear ○
Front/rear head airbags (curtain airbags)	Front •/Rear •
Knee airbag	• Main driver knee airbag
Passive pedestrian protection	•

Wheel brake

Front Brake Type	Ventilation disc
Rear Brake Type	Ventilation disc
Parking brake type	Electronic Parking

Wheel brake (continued)

Front Tire Size	225/45 R18
Rear Tire Size	255/40 R18
Spare Tire Size	None

Audio/Interior Lighting

Speaker Brand Name	○Burmester Berlin Sound (USD 1,174)
Number of speakers	• 5 horns; ○ 15 horns
Interior ambient lighting	• 64 colors

Driving functions

Navigation traffic information display	•
Lane assist	-
Lane Keeping Assist System	•
Cruise control system	• Full speed adaptive cruise
Satellite navigation system	•
Driving assistance level	•L2
Map Brand	• Gaud
Parking Assist	•

Exterior lighting

Low beam light source	•LED
High beam light source	•LED
LED daytime running lights	•
Adaptive high and low beam	•
Automatic headlights	•
Height-adjustable headlights	•
Headlight Delay Off	•

Exterior mirrors

Exterior mirror function	• Electric adjustment; • Electric folding; • Rearview mirror heating; • Automatic folding when locked
---------------------------------	---

Appearance/anti-theft

Rim material	• Aluminum alloy
Electric trunk	-

Appearance/anti-theft (continued)

Electronic engine immobilizer	<ul style="list-style-type: none">•
Central locking system in the car	<ul style="list-style-type: none">•
Key Type	<ul style="list-style-type: none">• Remote key
Keyless start system	<ul style="list-style-type: none">•
Appearance Kit	<ul style="list-style-type: none">• Sports style
Remote start function	<ul style="list-style-type: none">•

Skylight/Glass

Sunroof Type	<ul style="list-style-type: none">• Electric sunroof
Front/rear electric windows	Front •/Rear •
One-touch window lifting function	<ul style="list-style-type: none">• Full car
Window anti-pinch function	<ul style="list-style-type: none">•
Car makeup mirror	<ul style="list-style-type: none">• Main driver's lamp; • co-pilot's lamp
Rear wiper	-
Rain sensor wiper function	<ul style="list-style-type: none">• Rainfall-sensing

Interior and exterior color

Exterior Color	Lava red:#B52E39; Arctic white:#F4F4F4; Fritillaria white:#E6E6E6; Sea night blue:#143882; Graphite gray:#4E5158; Time and space silver:#ACACAE; Pine green:#193A48; Obsidian black:#000000
Interior Color	Black:#000000; Black/Flame Red:#000000/#621C27; Black/Macchiato Beige:#000000/#D4D0CF; Black/Titanium Grey:#000000/#2C2D31; Black/Ochre Brown:#000000/#773B34

Steering wheel/interior mirror

Steering Wheel Material	<ul style="list-style-type: none">• Leather
Steering wheel position adjustment	<ul style="list-style-type: none">• Manual up and down front and rear adjustment
Multi-function steering wheel	<ul style="list-style-type: none">•
Heated Steering Wheel	-

Steering wheel/interior mirror (continued)

Steering wheel memory	-
Trip computer display screen	• Color
Full LCD instrument panel	•
LCD instrument size	• 12.3 inches
Interior rearview mirror function	• Manual anti-glare
Gear shifting	• Electronic gear shift
ETC Device	○(USD 441)
Steering Wheel Shift Paddles	•

Intelligent configuration

Connected Car Services	•
OTA Updates	•
4G/5G Network	•4G
Mobile APP remote function	• Door control; • Vehicle start-up; • Vehicle condition inquiry/diagnosis; • Vehicle location/vehicle search

Driving Control

Driving mode switch	• Sport; • Economy; • Standard/Comfort
Automatic parking	•
Hill start assist	•
Energy recovery system	•
Variable steering ratio	•
Engine start-stop technology	•

Driving Hardware

Front/rear parking radar	Front •/Rear •
Driving Assistance Camera System	• Reversing image
Front perception camera	• Monocular
Number of cameras	• 2
Number of ultrasonic radars	• 12

In-car charging

Multimedia/charging port	•Type-C
---------------------------------	---------

In-car charging (continued)

Number of USB/Type-C ports	• 2 in the front row/2 in the back row
-----------------------------------	--

Optional Package

Optional Package	Zhile Package (USD 1,174; Including: Burmester 3D Surround Stereo Sound System, Personalized Sound Settings)
-------------------------	--

"●" = Standard equipment

"_" = Not available

"○" = Optional equipment.

Note: These are Chinese market vehicles. Warranty coverage is not available outside of China.