

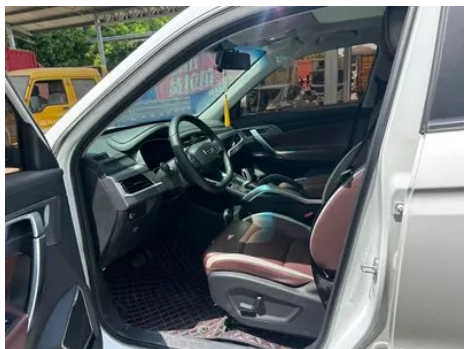
# Vehicle Detail Report

Geely Boyue 2022 1.8TD DCT Zhiya type

## Basic Information

|                    |            |
|--------------------|------------|
| Brand              | Geely      |
| Mileage            | 13,000 km  |
| Color              | White      |
| First Registration | 2023-03-01 |
| Transfer Count     | 0          |

## Vehicle Images





## Vehicle Condition

1. Left front door, Paint repair. 2. Left rear door, Paint repair. 3. Left rear quarter panel, Paint repair.

## Configuration Information

### Model Information

|                    |                                       |
|--------------------|---------------------------------------|
| <b>Model Name</b>  | Geely Boyue 2022 1.8TD DCT Zhiya type |
| <b>Launch Date</b> | 2022.04                               |

### Basic parameters

|   |                         |
|---|-------------------------|
| <b>Vehicle Class</b>                            | Compact SUV             |
| <b>Energy Type</b>                              | Gasoline                |
| <b>Maximum Power (kW)</b>                       | 135                     |
| <b>Maximum Torque (N·m)</b>                     | 300                     |
| <b>Transmission</b>                             | 7-speed wet dual-clutch |
| <b>Body Type</b>                                | SUV                     |
| <b>Engine</b>                                   | 1.8L 184 hp L4          |
| <b>Dimensions (L×W×H) (mm)</b>                  | 4519*1831*1694          |
| <b>Official 0-100 km/h Acceleration (s)</b>     | -                       |
| <b>Top Speed (km/h)</b>                         | 200                     |
| <b>Curb Weight (kg)</b>                         | 1615                    |
| <b>Maximum Gross Weight (kg)</b>                | 2065                    |
| <b>NEDC Combined Fuel Consumption (L/100km)</b> | 7.7                     |

### engine

|                             |               |
|-----------------------------|---------------|
| <b>Engine Model</b>         | JLE-4G18TDC   |
| <b>Displacement (mL)</b>    | 1799          |
| <b>Displacement (L)</b>     | 1.8           |
| <b>Induction Type</b>       | Turbocharging |
| <b>Cylinder Arrangement</b> | L             |

## engine (continued)

|                                |                  |
|--------------------------------|------------------|
| <b>Number of Cylinders</b>     | 4                |
| <b>Valves per Cylinder</b>     | 4                |
| <b>Valve Train</b>             | DOHC             |
| <b>Maximum Power (PS)</b>      | 184              |
| <b>Max Power Speed (rpm)</b>   | 5500             |
| <b>Max Torque Speed (rpm)</b>  | 1750-4000        |
| <b>Maximum net power (kW)</b>  | 135              |
| <b>Fuel Grade</b>              | 92.              |
| <b>Fuel Delivery System</b>    | Direct injection |
| <b>Cylinder Head Material</b>  | Aluminum alloy   |
| <b>Cylinder Block Material</b> | Cast iron        |
| <b>Engine layout</b>           | Horizontal       |

## Screen/System

|   |   |
|---|---|
| <b>Central control color screen</b>     | <ul style="list-style-type: none"><li>• Touch LCD screen</li></ul>  |
| <b>Infotainment Screen Size</b>         | <ul style="list-style-type: none"><li>• 10.25 inches</li></ul>  |
| <b>Bluetooth/In-car Phone</b>           | <ul style="list-style-type: none"><li>•</li></ul>   |
| <b>Voice recognition control system</b> | <ul style="list-style-type: none"><li>• Multimedia system;</li><li>• Navigation;</li><li>• Telephone;</li><li>• Air conditioning;</li><li>• Sunroof</li></ul> |
| <b>In-vehicle intelligent system</b>    | <ul style="list-style-type: none"><li>• GKUI Intelligent Ecosystem</li></ul>  |

## Body

|                               |            |
|-------------------------------|------------|
| <b>Length (mm)</b>            | 4519       |
| <b>Width (mm)</b>             | 1831       |
| <b>Height (mm)</b>            | 1694       |
| <b>Wheelbase (mm)</b>         | 2670       |
| <b>Front Track (mm)</b>       | 1560       |
| <b>Rear Track (mm)</b>        | 1550       |
| <b>Door Opening Type</b>      | swing door |
| <b>Number of Doors</b>        | 5          |
| <b>Number of Seats</b>        | 5          |
| <b>Fuel Tank Capacity (L)</b> | 58         |
| <b>Trunk volume (L)</b>       | -          |
| <b>Drag Coefficient (Cd)</b>  | -          |

## Body (continued)

|                            |      |
|----------------------------|------|
| <b>Approach Angle (°)</b>  | 20   |
| <b>Departure Angle (°)</b> | 23.9 |

## Gearbox

|                          |                                    |
|--------------------------|------------------------------------|
| <b>Abbreviation</b>      | 7-speed wet dual-clutch            |
| <b>Number of Gears</b>   | 7                                  |
| <b>Transmission Type</b> | Wet Dual-Clutch Transmission (DCT) |

## Chassis steering

|                              |                                      |
|------------------------------|--------------------------------------|
| <b>Drive Type</b>            | Front-engine, Front-wheel drive (FF) |
| <b>Front Suspension Type</b> | MacPherson independent suspension    |
| <b>Rear Suspension Type</b>  | Multi-link independent suspension    |
| <b>Power Steering Type</b>   | Electric power assistance            |
| <b>Vehicle structure</b>     | bearing type                         |

## Seat Configuration

|  |   |
|--|---|
| <b>Seat Material</b>   | <ul style="list-style-type: none"><li>• Imitation leather</li></ul>   |
| <b>Main seat adjustment</b>                                    | <ul style="list-style-type: none"><li>• Front and rear adjustment;</li><li>• Backrest adjustment;</li><li>• Height adjustment (2-way)</li></ul> |
| <b>Co-seat adjustment method</b>                               | <ul style="list-style-type: none"><li>• Front and rear adjustment;</li><li>• Backrest adjustment</li></ul>                                      |
| <b>Electric adjustment of driver's seat and passenger seat</b> | Main/Deputy-  |
| <b>Front passenger seat rear adjustable buttons</b>            | -   |
| <b>Rear seat folding</b>                                       | <ul style="list-style-type: none"><li>• Proportional down</li></ul>   |
| <b>Front/rear center armrest</b>                               | Front •/Rear-   |
| <b>Rear cup holder</b>   | -   |

## Active safety

|   |   |
|---|---|
| <b>Anti-lock Braking System (ABS)</b>               | <ul style="list-style-type: none"><li>•</li></ul> |
| <b>Electronic Brakeforce Distribution (EBD/CBC)</b> | <ul style="list-style-type: none"><li>•</li></ul> |
| <b>Brake Assist System (EBA/BAS/BA)</b>             | <ul style="list-style-type: none"><li>•</li></ul> |
| <b>Traction Control System (ASR/TCS/TRC)</b>        | <ul style="list-style-type: none"><li>•</li></ul> |
| <b>Electronic Stability Control (ESC/ESP/DSC)</b>   | <ul style="list-style-type: none"><li>•</li></ul> |

## Active safety (continued)

|   |                         |
|---|-------------------------|
| <b>Tire Pressure Monitoring System (TPMS)</b> | • Tire pressure display |
| <b>Seat Belt Reminder</b>                     | • Main driving position |
| <b>ISOFIX Child Seat Anchors</b>              | •                       |
| <b>Lane Departure Warning System (LDWS)</b>   | -                       |
| <b>Autonomous Emergency Braking (AEB)</b>     | -                       |
| <b>Driver Fatigue Detection</b>               | -                       |

## Air conditioning/refrigerator

|  |                              |
|--|------------------------------|
| <b>Air conditioning temperature control method</b> | • Automatic air conditioning |
| <b>Rear Independent Climate Control</b>            | -                            |
| <b>Rear seat air vents</b>                         | •                            |
| <b>Temperature zone control</b>                    | •                            |
| <b>Car air purifier</b>                            | -                            |
| <b>In-cabin PM2.5 Filter</b>                       | •                            |

## Passive safety

|  |                 |
|--|-----------------|
| <b>Driver/passenger airbag</b>                   | Main •/Deputy • |
| <b>Front/rear side airbags</b>                   | -               |
| <b>Front/rear head airbags (curtain airbags)</b> | -               |

## Wheel brake

|                           |                    |
|---------------------------|--------------------|
| <b>Front Brake Type</b>   | Ventilation disc   |
| <b>Rear Brake Type</b>    | Disc               |
| <b>Parking brake type</b> | Electronic Parking |
| <b>Front Tire Size</b>    | 225/55 R19         |
| <b>Rear Tire Size</b>     | 225/55 R19         |
| <b>Spare Tire Size</b>    | Not full-size      |

## Audio/Interior Lighting

|                           |              |
|---------------------------|--------------|
| <b>Number of speakers</b> | • 4 speakers |
|---------------------------|--------------|

## Driving functions

|   |   |
|---|---|
| <b>Navigation traffic information display</b> | • |
| <b>Lane assist</b>                            | - |

## Driving functions (continued)

|                                    |                  |
|------------------------------------|------------------|
| <b>Lane Keeping Assist System</b>  | -                |
| <b>Cruise control system</b>       | • Cruise control |
| <b>Satellite navigation system</b> | •                |
| <b>Map Brand</b>                   | • Gaud           |
| <b>Parking Assist</b>              | -                |

## Exterior lighting

|                                     |      |
|-------------------------------------|------|
| <b>Low beam light source</b>        | •LED |
| <b>High beam light source</b>       | •LED |
| <b>LED daytime running lights</b>   | •    |
| <b>Adaptive high and low beam</b>   | -    |
| <b>Automatic headlights</b>         | •    |
| <b>Height-adjustable headlights</b> | •    |
| <b>Headlight Delay Off</b>          | •    |

## Exterior mirrors

|                                 |   |
|---------------------------------|---|
| <b>Exterior mirror function</b> | • Electric adjustment; • Electric folding; • Rearview mirror heating; • Automatic folding when locked |
|---------------------------------|---|

## Appearance/anti-theft

|  |                    |
|--|--------------------|
| <b>Rim material</b>                      | • Aluminum alloy   |
| <b>Electric trunk</b>                    | -                  |
| <b>Electronic engine immobilizer</b>     | •                  |
| <b>Central locking system in the car</b> | •                  |
| <b>Key Type</b>                          | • Remote key       |
| <b>Keyless start system</b>              | •                  |
| <b>Keyless entry function</b>            | • Driving position |
| <b>Roof rack</b>                         | •                  |

## Skylight/Glass

|  |                              |
|--|------------------------------|
| <b>Sunroof Type</b>                      | • Openable panoramic sunroof |
| <b>Front/rear electric windows</b>       | Front •/Rear •               |
| <b>One-touch window lifting function</b> | • Driving position           |

## Skylight/Glass (continued)

|                                   |  |
|-----------------------------------|--|
| <b>Window anti-pinch function</b> | <ul style="list-style-type: none"><li>•</li></ul>  |
| <b>Car makeup mirror</b>          | <ul style="list-style-type: none"><li>• Main driving position;</li><li>• First officer</li></ul> |
| <b>Rear wiper</b>                 | <ul style="list-style-type: none"><li>•</li></ul>  |

## Interior and exterior color

|                       |  |
|-----------------------|--|
| <b>Exterior Color</b> | Han jade white:#FFFEFE; Moyu black:#000000; Titanium crystal ash:#7D8488 |
| <b>Interior Color</b> | Black/Brown: #000000/#884A3E   |

## Steering wheel/interior mirror

|   |  |
|---|--|
| <b>Steering Wheel Material</b>            | <ul style="list-style-type: none"><li>• Cortex</li></ul>                                       |
| <b>Steering wheel position adjustment</b> | <ul style="list-style-type: none"><li>• Manual up and down front and rear adjustment</li></ul> |
| <b>Multi-function steering wheel</b>      | <ul style="list-style-type: none"><li>•</li></ul>  |
| <b>Heated Steering Wheel</b>              | -  |
| <b>Steering wheel memory</b>              | -  |
| <b>Trip computer display screen</b>       | <ul style="list-style-type: none"><li>• Color</li></ul>  |
| <b>Full LCD instrument panel</b>          | -  |
| <b>LCD instrument size</b>                | <ul style="list-style-type: none"><li>• 7 inches</li></ul>                                     |
| <b>Interior rearview mirror function</b>  | <ul style="list-style-type: none"><li>• Manual anti-glare</li></ul>                            |
| <b>Gear shifting</b>                      | <ul style="list-style-type: none"><li>• Electronic gear shift</li></ul>                        |

## Intelligent configuration

|                               |   |
|-------------------------------|---|
| <b>Connected Car Services</b> | <ul style="list-style-type: none"><li>•</li></ul>   |
| <b>OTA Updates</b>            | <ul style="list-style-type: none"><li>•</li></ul>   |
| <b>4G/5G Network</b>          | <ul style="list-style-type: none"><li>•4G</li></ul> |
| <b>Wi-Fi hotspots</b>         | <ul style="list-style-type: none"><li>•</li></ul>   |

## Driving Control

|                            |  |
|----------------------------|--|
| <b>Driving mode switch</b> | <ul style="list-style-type: none"><li>• Sport;</li><li>• Economy;</li><li>• Standard/Comfort</li></ul> |
| <b>Automatic parking</b>   | <ul style="list-style-type: none"><li>•</li></ul>  |
| <b>Steep slope descent</b> | <ul style="list-style-type: none"><li>•</li></ul>  |
| <b>Hill start assist</b>   | <ul style="list-style-type: none"><li>•</li></ul>  |

## Driving Hardware

|                                 |   |
|---------------------------------|---|
| <b>Front/rear parking radar</b> | Front-/Rear <ul style="list-style-type: none"><li>•</li></ul> |
|---------------------------------|---|

## Driving Hardware (continued)

|   |                   |
|---|-------------------|
| <b>Driving Assistance Camera System</b> | • Reversing image |
|---|-------------------|

## In-car charging

|                                   |                                       |
|-----------------------------------|---------------------------------------|
| <b>Multimedia/charging port</b>   | •USB                                  |
| <b>Number of USB/Type-C ports</b> | • 2 in the First row/1 in the 2nd-row |

---

"●" = Standard equipment

"-" = Not available

"○" = Optional equipment.

Note: These are Chinese market vehicles. Warranty coverage is not available outside of China.