

# Vehicle Detail Report

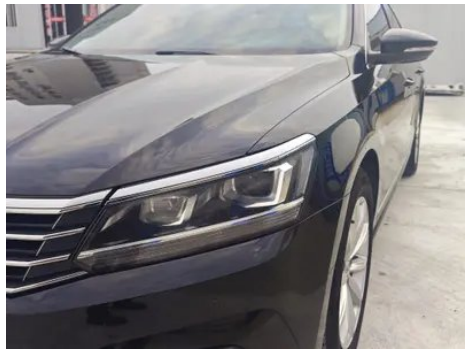
## Volkswagen Passat 2017 330TSI DSG Honor Edition

### Basic Information

Brand	Volkswagen
Mileage	147,000 km
Color	Black
First Registration	2018-01-01
Transfer Count	1

### Vehicle Images





## Vehicle Condition

1. Radiator support, Replaced. 2. Right upper side rail, Paint repair. 3. Right rocker panel, Paint repair. 4. Right front fender structure, Deformation. 5. Driver's seat rails and frame, Corrosion, Signs of removal. 6. Headliner, Repaired. 7. Left rear quarter panel, Deformation. 8. Right rear quarter panel, Paint repair, Body panel repair. 9. Headliner, Repaired.

## Configuration Information

### Model Information

<b>Model Name</b>	Volkswagen Passat 2017 330TSI DSG Honor Edition
<b>Launch Date</b>	2017.02

### Basic parameters

<b>Vehicle Class</b>	Mid-size car
<b>Energy Type</b>	Gasoline
<b>Maximum Power (kW)</b>	132
<b>Maximum Torque (N·m)</b>	300
<b>Transmission</b>	7-speed wet dual-clutch
<b>Body Type</b>	Sedan
<b>Engine</b>	1.8T 180 horsepower L4

## Basic parameters (continued)

<b>Dimensions (L×W×H) (mm)</b>	4872*1834*1484
<b>Official 0-100 km/h Acceleration (s)</b>	8.5
<b>Top Speed (km/h)</b>	225
<b>Curb Weight (kg)</b>	1580
<b>Maximum Gross Weight (kg)</b>	-
<b>NEDC Combined Fuel Consumption (L/100km)</b>	6.8

## engine

<b>Engine Model</b>	-
<b>Displacement (mL)</b>	1798
<b>Displacement (L)</b>	1.8
<b>Induction Type</b>	Turbocharging
<b>Cylinder Arrangement</b>	L
<b>Number of Cylinders</b>	4
<b>Valves per Cylinder</b>	4
<b>Valve Train</b>	DOHC
<b>Maximum Power (PS)</b>	180
<b>Max Power Speed (rpm)</b>	4300-6250
<b>Max Torque Speed (rpm)</b>	1450-4100
<b>Maximum net power (kW)</b>	-
<b>Fuel Grade</b>	95.
<b>Fuel Delivery System</b>	Direct injection
<b>Cylinder Head Material</b>	Aluminum alloy
<b>Cylinder Block Material</b>	Cast iron

## Screen/System

<b>Central control color screen</b>	•
<b>Infotainment Screen Size</b>	•6.5 inches
<b>Bluetooth/In-car Phone</b>	•
<b>Smartphone Integration/ Mirroring</b>	•

## Body

<b>Length (mm)</b>	4872
--------------------	------

## Body (continued)

<b>Width (mm)</b>	1834
<b>Height (mm)</b>	1484
<b>Wheelbase (mm)</b>	2803
<b>Front Track (mm)</b>	-
<b>Rear Track (mm)</b>	-
<b>Door Opening Type</b>	-
<b>Number of Doors</b>	4
<b>Number of Seats</b>	5
<b>Fuel Tank Capacity (L)</b>	69
<b>Trunk volume (L)</b>	490
<b>Drag Coefficient (Cd)</b>	-

## Gearbox

<b>Abbreviation</b>	7-speed wet dual-clutch
<b>Number of Gears</b>	7
<b>Transmission Type</b>	Wet Dual-Clutch Transmission (DCT)

## Chassis steering

<b>Drive Type</b>	Front-engine, Front-wheel drive (FF)
<b>Front Suspension Type</b>	MacPherson independent suspension
<b>Rear Suspension Type</b>	Multi-link independent suspension
<b>Power Steering Type</b>	Electric power assistance
<b>Vehicle structure</b>	bearing type

## Seat Configuration

<b>Seat Material</b>	• Leather
<b>Main seat adjustment</b>	• Front and rear adjustment; • Backrest adjustment; • Height adjustment (2-way); • Height adjustment (4-way)
<b>Co-seat adjustment method</b>	• Front and rear adjustment; • Backrest adjustment
<b>Electric adjustment of driver's seat and passenger seat</b>	Main •/Deputy •
<b>Front seat functions</b>	• Heating
<b>Front passenger seat rear adjustable buttons</b>	-
<b>Rear seat folding</b>	• Proportional down

## Seat Configuration (continued)

<b>Front/rear center armrest</b>	Front •/Rear •
<b>Rear cup holder</b>	•

## Active safety

<b>Anti-lock Braking System (ABS)</b>	•
<b>Electronic Brakeforce Distribution (EBD/CBC)</b>	•
<b>Brake Assist System (EBA/BAS/BA)</b>	•
<b>Traction Control System (ASR/TCS/TRC)</b>	•
<b>Electronic Stability Control (ESC/ESP/DSC)</b>	•
<b>Tire Pressure Monitoring System (TPMS)</b>	•
<b>Seat Belt Reminder</b>	•
<b>ISOFIX Child Seat Anchors</b>	•
<b>Lane Departure Warning System (LDWS)</b>	-
<b>Autonomous Emergency Braking (AEB)</b>	-
<b>Driver Fatigue Detection</b>	-

## Air conditioning/refrigerator

<b>Air conditioning temperature control method</b>	• Automatic air conditioning
<b>Rear Independent Climate Control</b>	•
<b>Rear seat air vents</b>	•
<b>Temperature zone control</b>	•
<b>Car air purifier</b>	-
<b>In-cabin PM2.5 Filter</b>	-

## Passive safety

<b>Driver/passenger airbag</b>	Main •/Deputy •
<b>Front/rear side airbags</b>	Front •/Rear-
<b>Front/rear head airbags (curtain airbags)</b>	Front •/Rear •

## Wheel brake

<b>Front Brake Type</b>	Ventilation disc
-------------------------	------------------

## Wheel brake (continued)

<b>Rear Brake Type</b>	Disc
<b>Parking brake type</b>	Electronic Parking
<b>Front Tire Size</b>	215/55 R17
<b>Rear Tire Size</b>	215/55 R17
<b>Spare Tire Size</b>	Not full-size

## Audio/Interior Lighting

<b>Number of speakers</b>	• 8 speakers
---------------------------	--------------

## Driving functions

<b>Navigation traffic information display</b>	-
<b>Lane assist</b>	-
<b>Lane Keeping Assist System</b>	-
<b>Cruise control system</b>	• Cruise control
<b>Satellite navigation system</b>	-
<b>Parking Assist</b>	-

## Exterior lighting

<b>Low beam light source</b>	• Xenon
<b>High beam light source</b>	• Xenon
<b>LED daytime running lights</b>	-
<b>Adaptive high and low beam</b>	-
<b>Automatic headlights</b>	•
<b>Front fog lights</b>	•
<b>Height-adjustable headlights</b>	•
<b>Headlight Delay Off</b>	-
<b>Turn signal lamp</b>	•

## Exterior mirrors

<b>Exterior mirror function</b>	• Electric adjustment; • Mirror heating
---------------------------------	---

## Appearance/anti-theft

<b>Rim material</b>	• Aluminum alloy
<b>Electronic engine immobilizer</b>	•

## Appearance/anti-theft (continued)

<b>Central locking system in the car</b>	<ul style="list-style-type: none"><li>•</li></ul>
<b>Key Type</b>	<ul style="list-style-type: none"><li>• Remote key</li></ul>
<b>Keyless start system</b>	<ul style="list-style-type: none"><li>•</li></ul>

## Skylight/Glass

<b>Sunroof Type</b>	<ul style="list-style-type: none"><li>• Electric sunroof</li></ul>
<b>Front/rear electric windows</b>	Front •/Rear •
<b>One-touch window lifting function</b>	<ul style="list-style-type: none"><li>• Full vehicle</li></ul>
<b>Window anti-pinch function</b>	<ul style="list-style-type: none"><li>•</li></ul>
<b>Car makeup mirror</b>	<ul style="list-style-type: none"><li>•</li></ul>
<b>Rear wiper</b>	-
<b>Rain sensor wiper function</b>	<ul style="list-style-type: none"><li>•</li></ul>

## Interior and exterior color

<b>Exterior Color</b>	Gold and Black #000000 Platinum #A8A38E crystal ash #6B7575 Shan Hong #611E2F Sandalwood Purple #313D58 obsidian silver #919BA6 Glazed gold #A98E58 Jade White #B5BEBF
<b>Interior Color</b>	Black #000000 Black Beige #1D1E20 #AAABA6

## Steering wheel/interior mirror

<b>Steering Wheel Material</b>	<ul style="list-style-type: none"><li>• Cortex</li></ul>
<b>Steering wheel position adjustment</b>	<ul style="list-style-type: none"><li>• Manual up and down front and rear adjustment</li></ul>
<b>Multi-function steering wheel</b>	<ul style="list-style-type: none"><li>•</li></ul>
<b>Heated Steering Wheel</b>	-
<b>Steering wheel memory</b>	-
<b>Trip computer display screen</b>	<ul style="list-style-type: none"><li>•</li></ul>
<b>Full LCD instrument panel</b>	-
<b>Interior rearview mirror function</b>	<ul style="list-style-type: none"><li>• Manual anti-glare</li></ul>

## Intelligent configuration

<b>Connected Car Services</b>	-
-------------------------------	---

## Intelligent configuration (continued)

<b>OTA Updates</b>	-
--------------------	---

### Driving Control

<b>Automatic parking</b>	•
<b>Hill start assist</b>	•
<b>Engine start-stop technology</b>	•

### Driving Hardware

<b>Front/rear parking radar</b>	Front •/Rear •
---------------------------------	----------------

### In-car charging

<b>Multimedia/charging port</b>	•USB;•AUX;•SD
---------------------------------	---------------

---

"●" = Standard equipment

"\_" = Not available

"○" = Optional equipment.

Note: These are Chinese market vehicles. Warranty coverage is not available outside of China.