

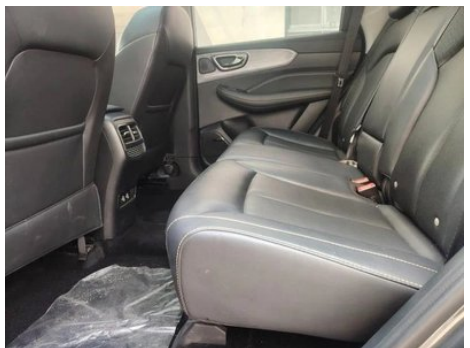
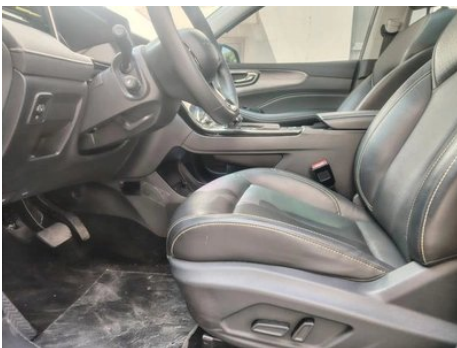
Vehicle Detail Report

Roewe RX5 2023 PLUS 330TGI Automatic Tide-receiving Zhihui Edition

Basic Information

Brand	Roewe
Mileage	44,000 km
Color	Silver-gray
First Registration	2023-11-01
Transfer Count	0

Vehicle Images





Vehicle Condition

1. Metal parts, original finish.

Configuration Information

Model Information

Model Name	Roewe RX5 2023 PLUS 330TGI Automatic Tide-receiving Zhihui Edition
Launch Date	2022.08

Basic parameters

Vehicle Class	Compact SUV
Energy Type	Gasoline
Maximum Power (kW)	133
Maximum Torque (N·m)	285
Transmission	7-speed wet dual-clutch
Body Type	SUV
Engine	1.5L 181 hp L4
Dimensions (L×W×H) (mm)	4571*1855*1719
Official 0-100 km/h Acceleration (s)	-
Top Speed (km/h)	190
Curb Weight (kg)	1539
Maximum Gross Weight (kg)	1972

Basic parameters (continued)

NEDC Combined Fuel Consumption (L/100km)	6.9
WLTP Combined Fuel Consumption (L/100km)	7.45

engine

Engine Model	15C4E
Displacement (mL)	1490
Displacement (L)	1.5
Induction Type	Turbocharging
Cylinder Arrangement	L
Number of Cylinders	4
Valves per Cylinder	4
Valve Train	DOHC
Maximum Power (PS)	181
Max Power Speed (rpm)	5600
Max Torque Speed (rpm)	1500-4000
Maximum net power (kW)	133
Fuel Grade	92.
Fuel Delivery System	Direct injection
Cylinder Head Material	Aluminum alloy
Cylinder Block Material	Aluminum alloy
Engine layout	Horizontal

Screen/System

Central control color screen	<ul style="list-style-type: none">• Touch LCD screen
Infotainment Screen Size	<ul style="list-style-type: none">•14.1 inch
Bluetooth/In-car Phone	<ul style="list-style-type: none">•
Voice recognition control system	<ul style="list-style-type: none">• Multimedia system;• Navigation;• Telephone,• Skylight

Body

Length (mm)	4571
Width (mm)	1855
Height (mm)	1719
Wheelbase (mm)	2708
Front Track (mm)	1574

Body (continued)

Rear Track (mm)	1593
Door Opening Type	Swing door
Number of Doors	5
Number of Seats	5
Fuel Tank Capacity (L)	55
Trunk volume (L)	430-1639
Drag Coefficient (Cd)	-
Approach Angle (°)	20
Departure Angle (°)	28

Gearbox

Abbreviation	7-speed wet dual-clutch
Number of Gears	7
Transmission Type	Wet Dual-Clutch Transmission (DCT)

Chassis steering

Drive Type	Front-engine, Front-wheel drive (FF)
Front Suspension Type	MacPherson strut independent suspension
Rear Suspension Type	Multi-link independent suspension
Power Steering Type	Electric power assist
Vehicle structure	bearing type

Seat Configuration

Seat Material	<ul style="list-style-type: none">• Imitation leather
Main seat adjustment	<ul style="list-style-type: none">• Front and rear adjustment;• Backrest adjustment;• Height adjustment (2 directions)
Co-seat adjustment method	<ul style="list-style-type: none">• Front and rear adjustment;• Backrest adjustment
Electric adjustment of driver's seat and passenger seat	-
Front passenger seat rear adjustable buttons	-
Second row seat adjustment	<ul style="list-style-type: none">• Backrest adjustment
Rear seat folding	<ul style="list-style-type: none">• Proportional down
Front/rear center armrest	Front •/Back •
Rear cup holder	<ul style="list-style-type: none">•

Active safety

Active safety (continued)

Anti-lock Braking System (ABS)	•
Electronic Brakeforce Distribution (EBD/CBC)	•
Brake Assist System (EBA/BAS/BA)	•
Traction Control System (ASR/TCS/TRC)	•
Electronic Stability Control (ESC/ESP/DSC)	•
Tire Pressure Monitoring System (TPMS)	• Tire pressure display
Seat Belt Reminder	• Main driving position
ISOFIX Child Seat Anchors	•
Lane Departure Warning System (LDWS)	-
Autonomous Emergency Braking (AEB)	-
Driver Fatigue Detection	-

Air conditioning/refrigerator

Air conditioning temperature control method	• Manual air conditioning
Rear Independent Climate Control	-
Rear seat air vents	•
Temperature zone control	-
Car air purifier	-
In-cabin PM2.5 Filter	•

Passive safety

Driver/passenger airbag	Main •/Sub •
Front/rear side airbags	-
Front/rear head airbags (curtain airbags)	-

Wheel brake

Front Brake Type	Ventilation, Disc-type
Rear Brake Type	Disc-type
Parking brake type	Electronic parking
Front Tire Size	215/60 R17

Wheel brake (continued)

Rear Tire Size	215/60 R17
Spare Tire Size	Non-full size

Audio/Interior Lighting

Number of speakers	• 4 speakers
---------------------------	--------------

Driving functions

Navigation traffic information display	•
Lane assist	-
Lane Keeping Assist System	-
Cruise control system	• Cruise control
Satellite navigation system	•
Parking Assist	-

Exterior lighting

Low beam light source	•LED
High beam light source	•LED
LED daytime running lights	•
Adaptive high and low beam	-
Automatic headlights	•
Height-adjustable headlights	•
Headlight Delay Off	•
Lighting features	• Matrix

Exterior mirrors

Exterior mirror function	• Electric adjustment, • Mirror heating
---------------------------------	---

Appearance/anti-theft

Rim material	• Aluminum alloy
Electric trunk	-
Electronic engine immobilizer	•
Central locking system in the car	•
Key Type	• Remote key
Keyless start system	•

Appearance/anti-theft (continued)

Keyless entry function	<ul style="list-style-type: none">• Front row
Roof rack	<ul style="list-style-type: none">•

Skylight/Glass

Sunroof Type	<ul style="list-style-type: none">• Openable panoramic sunroof
Front/rear electric windows	Front •/Back •
One-touch window lifting function	<ul style="list-style-type: none">• Driving position
Window anti-pinch function	<ul style="list-style-type: none">•
Car makeup mirror	<ul style="list-style-type: none">• Main driver's lamp;• co-pilot's lamp
Rear wiper	<ul style="list-style-type: none">•

Interior and exterior color

Exterior Color	World Grey:#484F55; Moonlight white:#FFFFFF; Xuanwu Black:#000000
Interior Color	Black, #000000

Steering wheel/interior mirror

Steering Wheel Material	<ul style="list-style-type: none">• Plastic
Steering wheel position adjustment	<ul style="list-style-type: none">• Manual up and down adjustment
Multi-function steering wheel	<ul style="list-style-type: none">•
Heated Steering Wheel	-
Steering wheel memory	-
Trip computer display screen	<ul style="list-style-type: none">• Color
Full LCD instrument panel	-
LCD instrument size	<ul style="list-style-type: none">• 12.3 inches
Interior rearview mirror function	<ul style="list-style-type: none">• Manual anti-glare
Gear shifting	<ul style="list-style-type: none">• Electronic gear shift

Intelligent configuration

Connected Car Services	<ul style="list-style-type: none">•
OTA Updates	-
4G/5G Network	<ul style="list-style-type: none">•4G
Wi-Fi hotspots	<ul style="list-style-type: none">•

Driving Control

Driving Control (continued)

Driving mode switch	• Movement, • Economy; • Standard/Comfort
Automatic parking	•
Steep slope descent	•
Hill start assist	•

Driving Hardware

Front/rear parking radar	Front/Back •
Driving Assistance Camera System	• Reversing image

In-car charging

Multimedia/charging port	•USB
Number of USB/Type-C ports	• Front row, 1 backseat, 2 pieces

"●" = Standard equipment

"-" = Not available

"○" = Optional equipment.

Note: These are Chinese market vehicles. Warranty coverage is not available outside of China.