

Vehicle Detail Report

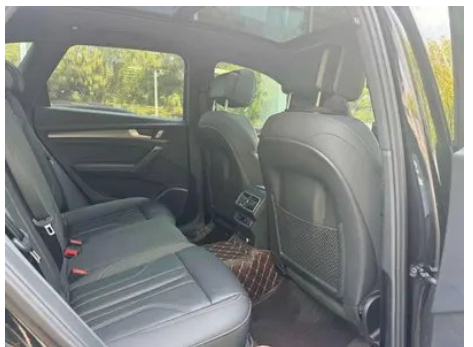
Audi Q5L 2024 45TFSI Deluxe Dynamic

Basic Information

Brand	Audi
Mileage	30,000 km
Color	Black
First Registration	2024-03-01
Transfer Count	1

Vehicle Images







Vehicle Condition

1. Original metal body panels with factory paint.

Configuration Information

Model Information

Model Name	Audi Q5L 2024 45 TFSI Deluxe Dynamic
Launch Date	2023.10

Basic parameters

Vehicle Class	Mid-size SUV
Energy Type	Gasoline
Maximum Power (kW)	180
Maximum Torque (N·m)	370
Transmission	7-speed wet dual-clutch
Body Type	SUV
Engine	2.0T 245 horsepower L4
Dimensions (L×W×H) (mm)	4770*1893*1667
Official 0-100 km/h Acceleration (s)	-
Top Speed (km/h)	230
Curb Weight (kg)	1875
Maximum Gross Weight (kg)	2355
WLTP Combined Fuel Consumption (L/100km)	7.96

engine

Engine Model	DTK
Displacement (mL)	1984
Displacement (L)	2.0
Induction Type	Turbocharging
Cylinder Arrangement	L

engine (continued)

Number of Cylinders	4
Valves per Cylinder	4
Valve Train	DOHC
Maximum Power (PS)	245
Max Power Speed (rpm)	5000-6000
Max Torque Speed (rpm)	1600-4300
Maximum net power (kW)	180
Fuel Grade	95.
Fuel Delivery System	Direct injection
Cylinder Head Material	Aluminum alloy
Cylinder Block Material	Cast iron
Engine layout	Longitudinal

Screen/System

Central control color screen	<ul style="list-style-type: none">• Touch LCD screen
Infotainment Screen Size	<ul style="list-style-type: none">• 10.1 inches
Bluetooth/In-car Phone	<ul style="list-style-type: none">•
Smartphone Integration/ Mirroring	<ul style="list-style-type: none">• Apple CarPlay support
Voice recognition control system	<ul style="list-style-type: none">• Multimedia system;• Navigation;• Telephone
Voice wake-up recognition by region	<ul style="list-style-type: none">• Single area
In-vehicle intelligent system	<ul style="list-style-type: none">• Audi Connect
Touch screen vibration feedback	<ul style="list-style-type: none">•
App Store	<ul style="list-style-type: none">•

Body

Length (mm)	4770
Width (mm)	1893
Height (mm)	1667
Wheelbase (mm)	2907
Front Track (mm)	1616
Rear Track (mm)	1610
Ground Clearance (Fully Loaded) (mm)	166

Body (continued)

Door Opening Type	swing door
Number of Doors	5
Number of Seats	5
Fuel Tank Capacity (L)	73
Trunk volume (L)	550
Drag Coefficient (Cd)	-
Approach Angle (°)	21
Departure Angle (°)	23
Minimum Turning Radius (m)	5.9

Gearbox

Abbreviation	7-speed wet dual-clutch
Number of Gears	7
Transmission Type	Wet Dual-Clutch Transmission (DCT)

Chassis steering

Drive Type	Front-engine, All-wheel drive (F-AWD)
Four-wheel drive	Timely four-wheel drive
Central differential structure	Multi-plate clutch
Front Suspension Type	Five-link independent suspension
Rear Suspension Type	Five-link independent suspension
Power Steering Type	Electric power assistance
Vehicle structure	bearing type

Seat Configuration

Seat Material	<ul style="list-style-type: none">• Imitation leather
Main seat adjustment	<ul style="list-style-type: none">• Front and rear adjustment;• Backrest adjustment;• Height adjustment (4-way);• Leg rest adjustment;• Lumbar support (4-way)
Co-seat adjustment method	<ul style="list-style-type: none">• Front and rear adjustment;• Backrest adjustment;• Height adjustment (4-way);• Leg rest adjustment;• Lumbar support (4-way)
Electric adjustment of driver's seat and passenger seat	Main •/Deputy •

Seat Configuration (continued)

Front seat functions	• Heating
Electric seat memory function	• Driving position
Front passenger seat rear adjustable buttons	-
Rear seat folding	• Proportional down
Front/rear center armrest	Front •/Rear •
Rear cup holder	•
Second row seat functions	○ Heating (USD 471)
Sports style seats	•
Heated/cooled cup holder	○ Heating (USD 235)

Active safety

Anti-lock Braking System (ABS)	•
Electronic Brakeforce Distribution (EBD/CBC)	•
Brake Assist System (EBA/BAS/BA)	•
Traction Control System (ASR/TCS/TRC)	•
Electronic Stability Control (ESC/ESP/DSC)	•
Tire Pressure Monitoring System (TPMS)	• Tire pressure alarm
Seat Belt Reminder	• Front row
ISOFIX Child Seat Anchors	•
Lane Departure Warning System (LDWS)	•
Autonomous Emergency Braking (AEB)	•
Driver Fatigue Detection	-
Forward Collision Warning (FCW)	•
Rear Collision Warning	○(USD 176)
Emergency Call System (eCall)	•
Door Opening Warning (DOW)	○

Air conditioning/refrigerator

Air conditioning/refrigerator (continued)

Air conditioning temperature control method	• Automatic air conditioning
Rear Independent Climate Control	•
Rear seat air vents	•
Temperature zone control	•
Car air purifier	-
In-cabin PM2.5 Filter	-

Passive safety

Driver/passenger airbag	Main •/Deputy •
Front/rear side airbags	Front/rear rear side airbag (USD 235)
Front/rear head airbags (curtain airbags)	Front •/Rear •

Wheel brake

Front Brake Type	Ventilation disc
Rear Brake Type	Ventilation disc
Parking brake type	Electronic Parking
Front Tire Size	255/45 R20
Rear Tire Size	255/45 R20
Spare Tire Size	None

Audio/Interior Lighting

Speaker Brand Name	•Bang & Olufsen
Number of speakers	• 19 Horn
Interior ambient lighting	• 30 colors
Touch reading light	•

Driving functions

Navigation traffic information display	•
Lane assist	○(USD 1,029)
Lane Keeping Assist System	○(USD 647)
Cruise control system	• Constant speed cruise; ○ Adaptive cruise (USD 2,382)
Satellite navigation system	•
Driving assistance level	○L2

Driving functions (continued)

Rear Cross Traffic Alert	○(USD 176)
Lane centering	○
Parking Assist	•

Exterior lighting

Low beam light source	•LED
High beam light source	•LED
LED daytime running lights	•
Adaptive high and low beam	○(USD 294)
Automatic headlights	•
Height-adjustable headlights	•
Headlight Delay Off	•
Lighting features	○ Matrix (USD 1,176)
Turn headlights	○
Headlight rain and fog mode	•
Headlight cleaning device	○

Exterior mirrors

Exterior mirror function	• Electric adjustment; • Electric folding; • Rearview mirror memory; • Rearview mirror heating; • Automatic downturning when reversing; • Automatic folding when locked; • Automatic anti-glare
---------------------------------	---

Appearance/anti-theft

Rim material	• Aluminum alloy
Electric trunk	•
Electronic engine immobilizer	•
Central locking system in the car	•
Key Type	• Remote key
Keyless start system	•
Keyless entry function	• Full vehicle
Appearance Kit	• Sports style
Hands-free Trunk	•

Appearance/anti-theft (continued)

Electric trunk position memory	•
Roof rack	•
Remote start function	•
Active closed grille	•
Side pedals	○ Fixed (USD 515)

Skylight/Glass

Sunroof Type	• Openable panoramic sunroof
Front/rear electric windows	Front •/Rear •
One-touch window lifting function	• Full vehicle
Window anti-pinch function	•
Car makeup mirror	• Main driver's lamp; • co-pilot's lamp
Rear wiper	•
Rain sensor wiper function	• Rainfall-sensing
Rear side window sunshades	○ Manual (USD 515)

Interior and exterior color

Exterior Color	Legendary Black #101010 Sky Cloud Gray #646464 Acona White #FFFFFF Nado Grey #A3A9B5 ibis white #F7F6F1 Rhythmic Blue #143250 Sohu Brown #50463C Tanggula White #E9E9E9 Interstellar Blue #053250
Interior Color	Black: #000000; Black/Alaskan Red: #000000/#821E22; Black/Occapi Brown: #000000/#966446; Black/Rock Gray: #000000/#BCBCBC

Steering wheel/interior mirror

Steering Wheel Material	• Leather
Steering wheel position adjustment	• Manual up and down front and rear adjustment
Multi-function steering wheel	•
Heated Steering Wheel	○(USD 147)
Steering wheel memory	-

Steering wheel/interior mirror (continued)

Trip computer display screen	• Color
Full LCD instrument panel	•
LCD instrument size	• 12.3 inches
Interior rearview mirror function	• Automatic anti-glare
Gear shifting	• Electronic gear shift
HUD Head Up Digital Display	○(USD 2,632)
ETC Device	○(USD 74)
Steering Wheel Shift Paddles	•

Intelligent configuration

Connected Car Services	•
OTA Updates	-
4G/5G Network	•4G;○5G
Mobile APP remote function	• Door control; • Vehicle start; • Climate control; • Vehicle status check/diagnostics
Wi-Fi hotspots	•
V2X Communications	○(USD 353)

Driving Control

Driving mode switch	• Sport; • Economy; • Standard/Comfort; • Off-Road; • Custom/Personalized
Automatic parking	•
Steep slope descent	•
Hill start assist	•
Engine start-stop technology	•

Driving Hardware

Front/rear parking radar	Front •/Rear •
Driving Assistance Camera System	• 360-degree panoramic image
Front perception camera	• Monocular
Number of cameras	• 5

In-car charging

Multimedia/charging port	•USB;•Type-C
---------------------------------	--------------

In-car charging (continued)

Number of USB/Type-C ports	• 2 in the front row/2 in the back row
Luggage compartment 12V power socket	•

"●" = Standard equipment

"_" = Not available

"○" = Optional equipment.

Note: These are Chinese market vehicles. Warranty coverage is not available outside of China.