

# Vehicle Detail Report

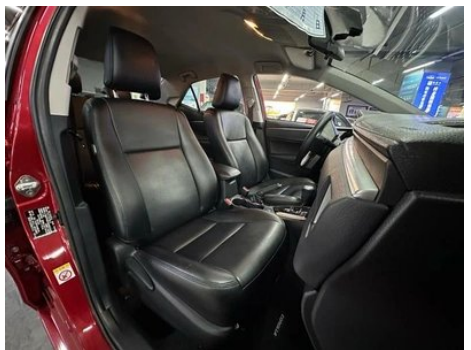
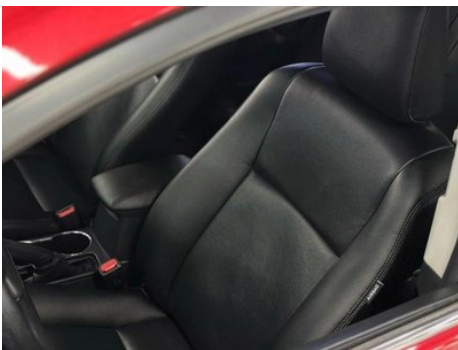
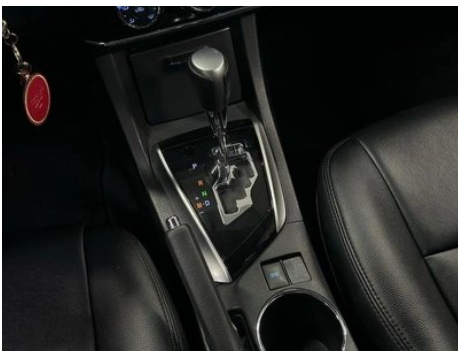
toyota corolla 2014 1.6L CVT GL

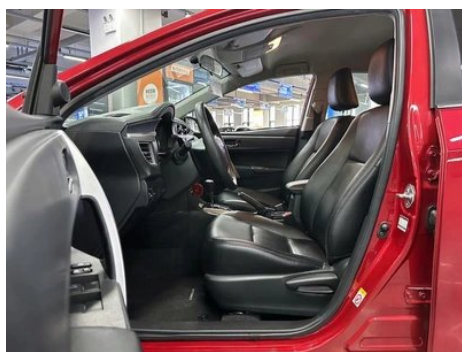
## Basic Information

Brand	Toyota
Mileage	54,300 km
Color	Red
First Registration	2016-09-01
Transfer Count	0

## Vehicle Images







## Vehicle Condition

1. Radiator support, Deformation. 2. Inner side of right C-pillar, Dent. 3. Driver's seat rails and frame, Signs of removal. 4. Front passenger seat rails and frame, Signs of removal. 5. Left rear quarter panel, Paint repair, Body panel repair. 6. Right rear quarter panel, Scratch, Deformation.

## Configuration Information

### Model Information

<b>Model Name</b>	toyota corolla 2014 1.6L CVT GL
<b>Launch Date</b>	2014.06

### Basic parameters

<b>Vehicle Class</b>	compact car
<b>Energy Type</b>	Gasoline
<b>Maximum Power (kW)</b>	90
<b>Maximum Torque (N·m)</b>	154
<b>Transmission</b>	CVT continuously variable transmission (simulates 8 speeds)
<b>Body Type</b>	Sedan
<b>Engine</b>	1.6L 122 hp L4
<b>Dimensions (L×W×H) (mm)</b>	4630*1775*1480
<b>Official 0-100 km/h Acceleration (s)</b>	-
<b>Top Speed (km/h)</b>	-
<b>Curb Weight (kg)</b>	1285
<b>Maximum Gross Weight (kg)</b>	-
<b>NEDC Combined Fuel Consumption (L/100km)</b>	5.9

### engine

<b>Engine Model</b>	1ZR-FE
<b>Displacement (mL)</b>	1598
<b>Displacement (L)</b>	1.6
<b>Induction Type</b>	Natural aspiration

## engine (continued)

<b>Cylinder Arrangement</b>	L
<b>Number of Cylinders</b>	4
<b>Valves per Cylinder</b>	4
<b>Compression Ratio</b>	10.2
<b>Valve Train</b>	DOHC
<b>Bore (mm)</b>	80.5
<b>Stroke (mm)</b>	78.5
<b>Maximum Power (PS)</b>	122
<b>Max Power Speed (rpm)</b>	6000
<b>Max Torque Speed (rpm)</b>	5200
<b>Maximum net power (kW)</b>	-
<b>Fuel Grade</b>	92.
<b>Fuel Delivery System</b>	Multi-point EFI
<b>Cylinder Head Material</b>	Aluminum alloy
<b>Cylinder Block Material</b>	Aluminum alloy
<b>Engine-specific technologies</b>	Double VVT-i

## Screen/System

<b>Bluetooth/In-car Phone</b>	-
<b>In-car CD/DVD Player</b>	• Single disc CD

## Body

<b>Length (mm)</b>	4630
<b>Width (mm)</b>	1775
<b>Height (mm)</b>	1480
<b>Wheelbase (mm)</b>	2700
<b>Front Track (mm)</b>	1525
<b>Rear Track (mm)</b>	1520
<b>Ground Clearance (Fully Loaded) (mm)</b>	145
<b>Door Opening Type</b>	-
<b>Number of Doors</b>	4
<b>Number of Seats</b>	5
<b>Fuel Tank Capacity (L)</b>	55
<b>Trunk volume (L)</b>	426-452

## Body (continued)

<b>Drag Coefficient (Cd)</b>	-
------------------------------	---

## Gearbox

<b>Abbreviation</b>	CVT continuously variable transmission (simulates 8 speeds)
<b>Number of Gears</b>	8
<b>Transmission Type</b>	Continuously Variable Transmission (CVT)

## Chassis steering

<b>Drive Type</b>	Front-engine, Front-wheel drive (FF)
<b>Front Suspension Type</b>	MacPherson independent suspension
<b>Rear Suspension Type</b>	Torsion beam non-independent suspension
<b>Power Steering Type</b>	Electric power assistance
<b>Vehicle structure</b>	bearing type

## Seat Configuration

<b>Seat Material</b>	<ul style="list-style-type: none"><li>• Fabric</li></ul>
<b>Main seat adjustment</b>	<ul style="list-style-type: none"><li>• Front and rear adjustment;</li><li>• Backrest adjustment</li></ul>
<b>Co-seat adjustment method</b>	<ul style="list-style-type: none"><li>• Front and rear adjustment;</li><li>• Backrest adjustment</li></ul>
<b>Electric adjustment of driver's seat and passenger seat</b>	-
<b>Front passenger seat rear adjustable buttons</b>	-
<b>Front/rear center armrest</b>	Front •/Rear-
<b>Rear cup holder</b>	-

## Active safety

<b>Anti-lock Braking System (ABS)</b>	<ul style="list-style-type: none"><li>•</li></ul>
<b>Electronic Brakeforce Distribution (EBD/CBC)</b>	<ul style="list-style-type: none"><li>•</li></ul>
<b>Brake Assist System (EBA/BAS/BA)</b>	<ul style="list-style-type: none"><li>•</li></ul>
<b>Traction Control System (ASR/TCS/TRC)</b>	-
<b>Electronic Stability Control (ESC/ESP/DSC)</b>	-
<b>Seat Belt Reminder</b>	<ul style="list-style-type: none"><li>•</li></ul>

## Active safety (continued)

<b>ISOFIX Child Seat Anchors</b>	•
<b>Lane Departure Warning System (LDWS)</b>	-
<b>Autonomous Emergency Braking (AEB)</b>	-
<b>Driver Fatigue Detection</b>	-

## Air conditioning/refrigerator

<b>Air conditioning temperature control method</b>	• Manual air conditioning
<b>Rear Independent Climate Control</b>	-
<b>Rear seat air vents</b>	-
<b>Temperature zone control</b>	-
<b>Car air purifier</b>	-
<b>In-cabin PM2.5 Filter</b>	-

## Passive safety

<b>Driver/passenger airbag</b>	Main •/Deputy •
<b>Front/rear side airbags</b>	Front •/Rear-
<b>Front/rear head airbags (curtain airbags)</b>	-

## Wheel brake

<b>Front Brake Type</b>	Ventilation disc
<b>Rear Brake Type</b>	Disc
<b>Parking brake type</b>	handbrake
<b>Front Tire Size</b>	195/65 R15
<b>Rear Tire Size</b>	195/65 R15
<b>Spare Tire Size</b>	Full size

## Audio/Interior Lighting

<b>Number of speakers</b>	• 6-7 Horns
---------------------------	-------------

## Driving functions

<b>Navigation traffic information display</b>	-
<b>Lane assist</b>	-
<b>Lane Keeping Assist System</b>	-
<b>Satellite navigation system</b>	-

## Driving functions (continued)

<b>Parking Assist</b>	-
-----------------------	---

## Exterior lighting

<b>Low beam light source</b>	• Halogen
<b>High beam light source</b>	• Halogen
<b>LED daytime running lights</b>	-
<b>Adaptive high and low beam</b>	-
<b>Automatic headlights</b>	-
<b>Front fog lights</b>	•
<b>Height-adjustable headlights</b>	•
<b>Headlight Delay Off</b>	-

## Exterior mirrors

<b>Exterior mirror function</b>	• Electric adjustment; • Mirror heating
---------------------------------	---

## Appearance/anti-theft

<b>Rim material</b>	• Aluminum alloy
<b>Electric trunk</b>	-
<b>Central locking system in the car</b>	•
<b>Key Type</b>	• Remote key
<b>Keyless start system</b>	-

## Skylight/Glass

<b>Front/rear electric windows</b>	Front •/Rear •
<b>Window anti-pinch function</b>	-
<b>Car makeup mirror</b>	•
<b>Rear wiper</b>	-

## Interior and exterior color

<b>Exterior Color</b>	super white #FDFDFD Silver Metallic #D8DDD6 biotite #000000 red mica metallic #C4283E Platinum Bronze Metallic #8D857F gray metallic #3D4142 blue metallic #03426E
<b>Interior Color</b>	; Black/Beige:#3E4146/#C9A782; Black:#3E4146

## Steering wheel/interior mirror

## Steering wheel/interior mirror (continued)

<b>Steering wheel position adjustment</b>	• Manual up and down front and rear adjustment
<b>Multi-function steering wheel</b>	-
<b>Heated Steering Wheel</b>	-
<b>Steering wheel memory</b>	-
<b>Full LCD instrument panel</b>	-
<b>Interior rearview mirror function</b>	• Manual anti-glare

## Intelligent configuration

<b>Connected Car Services</b>	-
<b>OTA Updates</b>	-

## Driving Control

<b>Automatic parking</b>	-
--------------------------	---

## Driving Hardware

<b>Front/rear parking radar</b>	-
---------------------------------	---

## In-car charging

<b>Multimedia/charging port</b>	•USB;•AUX
---------------------------------	-----------

---

"●" = Standard equipment

"-" = Not available

"○" = Optional equipment.

Note: These are Chinese market vehicles. Warranty coverage is not available outside of China.