

# Vehicle Detail Report

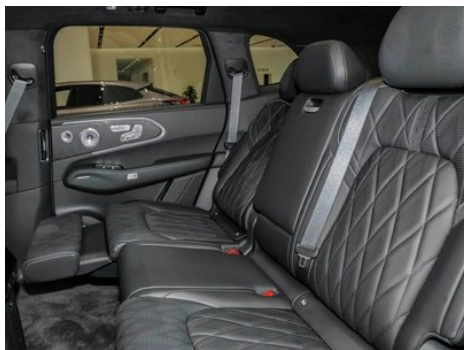
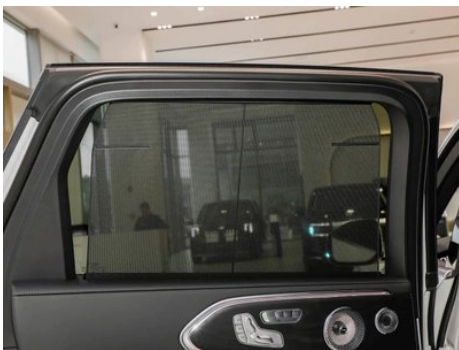
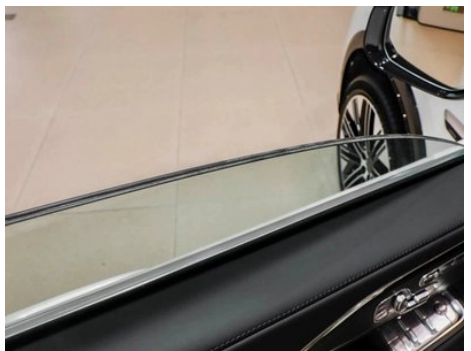
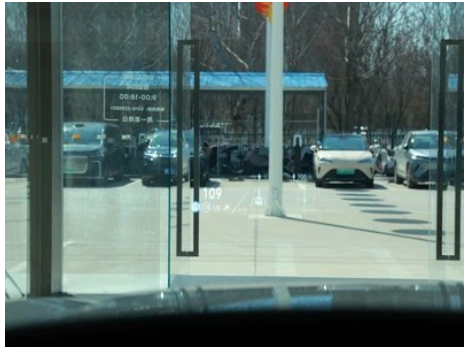
Zeekr 8X 2026 Max version 55kWh

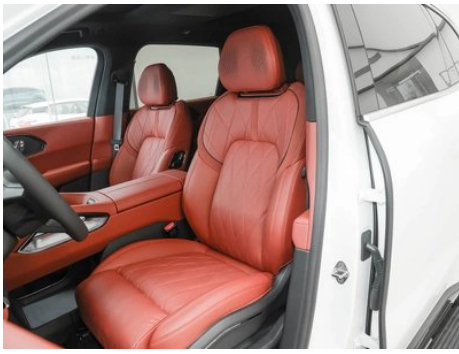
## Basic Information

Color	All in-stock colors are available
Vehicle Location	In stock at Shanghai Port, Nansha Port, Horgos and other ports.
Attribute	Brand New

## Vehicle Images







## Configuration Information

### Model Information

<b>Model Name</b>	Zeekr 8X 2026 Max version 55kWh
<b>Launch Date</b>	2026.04

### Basic parameters

<b>Vehicle Class</b>	Mid-size and large SUVs
<b>Energy Type</b>	Plug-in Hybrid Electric Vehicle (PHEV)
<b>Maximum Power (kW)</b>	205
<b>Maximum Torque (N·m)</b>	410
<b>Transmission</b>	1st DHT
<b>Body Type</b>	SUV
<b>Engine</b>	2.0L 279 hp L4
<b>Dimensions (L×W×H) (mm)</b>	5100*1998*1780
<b>Official 0-100 km/h Acceleration (s)</b>	3.7
<b>Top Speed (km/h)</b>	220
<b>Curb Weight (kg)</b>	2660
<b>Maximum Gross Weight (kg)</b>	3250
<b>Fast Charging Time (h)</b>	0.15
<b>Electric Motor (PS)</b>	898
<b>Fast Charging Range (%)</b>	20-80
<b>WLTC Electric Range (km)</b>	257
<b>WLTP Combined Fuel Consumption (L/100km)</b>	0.41
<b>CLTC Electric Range (km)</b>	320
<b>Towing Capacity (kg)</b>	2000

## Basic parameters (continued)

<b>Lowest state-of-charge fuel consumption (L/100km) WLTC</b>	6.43
<b>Combined fuel consumption (L/100km)</b>	2.89

## engine

<b>Engine Model</b>	DHE20-PFZ
<b>Displacement (mL)</b>	1974
<b>Displacement (L)</b>	2.0
<b>Induction Type</b>	Turbocharging
<b>Cylinder Arrangement</b>	L
<b>Number of Cylinders</b>	4
<b>Valves per Cylinder</b>	4
<b>Valve Train</b>	DOHC
<b>Maximum Power (PS)</b>	279
<b>Max Power Speed (rpm)</b>	5500
<b>Max Torque Speed (rpm)</b>	2000-4500
<b>Maximum net power (kW)</b>	202
<b>Fuel Grade</b>	95.
<b>Fuel Delivery System</b>	Direct injection
<b>Cylinder Head Material</b>	Aluminum alloy
<b>Cylinder Block Material</b>	Aluminum alloy
<b>Engine layout</b>	Horizontal

## Electric Motor

<b>Motor Type</b>	Permanent magnet/synchronous
<b>Total Electric Motor Power (kW)</b>	660
<b>Total Electric Motor Torque (N·m)</b>	935
<b>Front Electric Motor Max Power (kW)</b>	290
<b>Number of drive motors</b>	Dual motors
<b>Motor Layout</b>	Front-mounted Rear-mounted
<b>Battery Type</b>	Ternary lithium battery
<b>Battery Capacity (kWh)</b>	55
<b>Total Electric Motor Power (PS)</b>	898

## Electric Motor (continued)

<b>Rear Electric Motor Max Power (kW)</b>	370
<b>Battery Cell Brand</b>	Times
<b>Battery Cooling System</b>	Liquid cooling
<b>Power consumption per 100 kilometers (kWh/100km)</b>	21.4
<b>Fast charging function</b>	Support
<b>WLTC comprehensive range (km)</b>	1152
<b>Slow charging port location</b>	Rear left side of the car
<b>Rear motor model</b>	TZ230XYC04
<b>High voltage fast charging</b>	Support
<b>Warranty policy for first-time owners of Sandian</b>	Lifetime Warranty/Non-operational (Liability Exemption Terms Subject to Official)
<b>Fast charging port location</b>	Rear left side of the car
<b>External AC discharge power (kW)</b>	6
<b>Front motor model</b>	TZ220QYA01
<b>High voltage platform (V)</b>	900
<b>CLTC comprehensive endurance (km)</b>	1362
<b>External DC discharge power (kW)</b>	60

## Screen/System

<b>Central control color screen</b>	<ul style="list-style-type: none"><li>• Touch LCD screen</li></ul>
<b>Infotainment Screen Size</b>	<ul style="list-style-type: none"><li>• 16 inches</li></ul>
<b>Bluetooth/In-car Phone</b>	<ul style="list-style-type: none"><li>•</li></ul>
<b>Smartphone Integration/Mirroring</b>	<ul style="list-style-type: none"><li>• HUAWEI HiCar support</li></ul>
<b>Voice recognition control system</b>	<ul style="list-style-type: none"><li>• Multimedia system;</li><li>• Navigation;</li><li>• Telephone;</li><li>• Air conditioning;</li><li>• Windows;</li><li>• Seat heating;</li><li>• Seat ventilation;</li><li>• Seat massage</li></ul>
<b>Voice wake-up recognition by region</b>	<ul style="list-style-type: none"><li>• Four areas Six regions</li></ul>

## Screen/System (continued)

<b>In-vehicle intelligent system</b>	•ZEEKR OS
<b>Rear LCD screen</b>	•
<b>Facial Recognition</b>	•
<b>App Store</b>	•
<b>Central control screen type</b>	•MINI LED
<b>Central control screen resolution</b>	•3.5K
<b>Voice assistant wake-up word</b>	•Hi,Eva
<b>Voice wake-up word-free</b>	•
<b>Continuous speech recognition</b>	•
<b>See and Say</b>	•
<b>Car Intelligent Chip</b>	• Qualcomm Snapdragon 8295 ○2 seed Qualcomm Snapdragon 8295
<b>Rear multimedia control</b>	•
<b>Rear LCD screen size</b>	• 8 inches ○17 inch
<b>Number of rear multimedia screens</b>	• 1; ○ 2
<b>Rear LCD screen type</b>	○OLED
<b>Rear LCD screen resolution</b>	○3K

## Body

<b>Length (mm)</b>	5100
<b>Width (mm)</b>	1998
<b>Height (mm)</b>	1780
<b>Wheelbase (mm)</b>	3069
<b>Front Track (mm)</b>	1732
<b>Rear Track (mm)</b>	1745
<b>Door Opening Type</b>	swing door
<b>Number of Doors</b>	5
<b>Number of Seats</b>	5
<b>Fuel Tank Capacity (L)</b>	55
<b>Trunk volume (L)</b>	1133-2200
<b>Drag Coefficient (Cd)</b>	-

## Body (continued)

<b>Approach Angle (°)</b>	20
<b>Departure Angle (°)</b>	22
<b>Minimum Turning Radius (m)</b>	5.9
<b>Ground Clearance (mm)</b>	191

## Gearbox

<b>Abbreviation</b>	1st DHT
<b>Number of Gears</b>	1
<b>Transmission Type</b>	Dedicated Hybrid Transmission (DHT)

## Four-wheel drive/off-road

<b>Tow hook</b>	<input type="radio"/> Electric (USD 1,029)
<b>Water sensing system</b>	<input type="radio"/>
<b>Creep Mode</b>	<input type="checkbox"/>

## Chassis steering

<b>Drive Type</b>	Front-engine, All-wheel drive (F-AWD)
<b>Four-wheel drive</b>	Electric four-wheel drive
<b>Front Suspension Type</b>	Double wishbone independent suspension
<b>Rear Suspension Type</b>	Multi-link independent suspension
<b>Power Steering Type</b>	Electric power assistance
<b>Vehicle structure</b>	bearing type
<b>Air Suspension Type</b>	Dual chamber

## Seat Configuration

<b>Seat Material</b>	<ul style="list-style-type: none"><li>• Leather</li></ul>
<b>Main seat adjustment</b>	<ul style="list-style-type: none"><li>• Front and rear adjustment;</li><li>• Backrest adjustment;</li><li>• Height adjustment (4-way);</li><li>• Leg support adjustment;</li><li>• Lumbar support (4-way);</li><li>• Wing support (active)</li></ul>
<b>Co-seat adjustment method</b>	<ul style="list-style-type: none"><li>• Front and rear adjustment;</li><li>• Backrest adjustment;</li><li>• Height adjustment (4-way);</li><li>• Leg rest adjustment;</li><li>• Lumbar support (4-way)</li></ul>
<b>Electric adjustment of driver's seat and passenger seat</b>	Main <input type="checkbox"/> /Deputy <input type="checkbox"/>

## Seat Configuration (continued)

<b>Front seat functions</b>	<ul style="list-style-type: none"><li>• Heating; • Ventilation; • Massage; • Headrest speakers</li></ul>
<b>Electric seat memory function</b>	<ul style="list-style-type: none"><li>• Driver's seat; • Passenger seat; • Rear seats</li></ul>
<b>Front passenger seat rear adjustable buttons</b>	<ul style="list-style-type: none"><li>•</li></ul>
<b>Second row seat adjustment</b>	<ul style="list-style-type: none"><li>• Front and rear adjustment • Backrest adjustment lumbar adjustment • Leg rest adjustment Foot adjustment</li></ul>
<b>Rear seat folding</b>	<ul style="list-style-type: none"><li>• Proportional down</li></ul>
<b>Front/rear center armrest</b>	Front •/Rear •
<b>Rear cup holder</b>	<ul style="list-style-type: none"><li>•</li></ul>
<b>Second row seat functions</b>	<ul style="list-style-type: none"><li>• Heating; • Ventilation; • Massage; • Headrest speakers</li></ul>
<b>Seat Layout</b>	○2-2-2
<b>Second row independent seats</b>	○
<b>Electric folding rear seats</b>	<ul style="list-style-type: none"><li>•</li></ul>
<b>Second row seats electrically adjustable</b>	<ul style="list-style-type: none"><li>•</li></ul>
<b>Third row seat adjustment</b>	○Backrest adjustment
<b>The third row of seats is electrically adjustable</b>	○
<b>Rear small table</b>	<ul style="list-style-type: none"><li>•</li></ul>
<b>Third row seat functions</b>	○ Heating

## Active safety

<b>Anti-lock Braking System (ABS)</b>	<ul style="list-style-type: none"><li>•</li></ul>
<b>Electronic Brakeforce Distribution (EBD/CBC)</b>	<ul style="list-style-type: none"><li>•</li></ul>
<b>Brake Assist System (EBA/BAS/BA)</b>	<ul style="list-style-type: none"><li>•</li></ul>
<b>Traction Control System (ASR/TCS/TRC)</b>	<ul style="list-style-type: none"><li>•</li></ul>
<b>Electronic Stability Control (ESC/ESP/DSC)</b>	<ul style="list-style-type: none"><li>•</li></ul>
<b>Tire Pressure Monitoring System (TPMS)</b>	<ul style="list-style-type: none"><li>• Tire pressure display</li></ul>
<b>Seat Belt Reminder</b>	<ul style="list-style-type: none"><li>• Full vehicle</li></ul>

## Active safety (continued)

<b>ISOFIX Child Seat Anchors</b>	•
<b>Lane Departure Warning System (LDWS)</b>	•
<b>Autonomous Emergency Braking (AEB)</b>	•
<b>Driver Fatigue Detection</b>	•
<b>Forward Collision Warning (FCW)</b>	•
<b>Rear Collision Warning</b>	•
<b>Low Speed Alert</b>	•
<b>Emergency Call System (eCall)</b>	•
<b>Built-in Dashcam</b>	•
<b>Door Opening Warning (DOW)</b>	•
<b>Roll-Over Protection System</b>	•
<b>Sentry Mode</b>	•

## Air conditioning/refrigerator

<b>Air conditioning temperature control method</b>	• Automatic air conditioning
<b>Rear Independent Climate Control</b>	•
<b>Rear seat air vents</b>	•
<b>Temperature zone control</b>	•
<b>Car air purifier</b>	•
<b>In-cabin PM2.5 Filter</b>	•
<b>In-car Refrigerator</b>	•
<b>Negative ion generator</b>	•
<b>Car fragrance device</b>	•
<b>Heat pump air conditioner</b>	•
<b>Air quality monitoring</b>	•

## Passive safety

<b>Driver/passenger airbag</b>	Main •/Deputy •
<b>Front/rear side airbags</b>	Front •/Rear •
<b>Front/rear head airbags (curtain airbags)</b>	Front •/Rear •

## Passive safety (continued)

<b>Front center airbag</b>	•
----------------------------	---

## Wheel brake

<b>Front Brake Type</b>	Ventilation disc
<b>Rear Brake Type</b>	Ventilation disc
<b>Parking brake type</b>	Electronic Parking
<b>Front Tire Size</b>	255/55 R20
<b>Rear Tire Size</b>	255/55 R20
<b>Spare Tire Size</b>	-

## Audio/Interior Lighting

<b>Number of speakers</b>	•29 Speaker
<b>Interior ambient lighting</b>	• 16.8 million color
<b>Active ambient lighting</b>	•
<b>Dolby Atmos</b>	•

## Driving functions

<b>Navigation traffic information display</b>	•
<b>Lane assist</b>	•
<b>Lane Keeping Assist System</b>	•
<b>Cruise control system</b>	• Full speed adaptive cruise
<b>Satellite navigation system</b>	•
<b>Night Vision System</b>	○
<b>Driving assistance level</b>	•L2
<b>Rear Cross Traffic Alert</b>	•
<b>Lane centering</b>	•
<b>Road traffic sign recognition</b>	•
<b>Map Brand</b>	• Gaud
<b>Remote Parking</b>	•
<b>Driver assistance systems</b>	• Thousand-Mile Vastness H7 Thousands of miles H9
<b>Remote Summon</b>	○
<b>Hands-off detection</b>	•
<b>Memory Parking</b>	•
<b>Traffic light recognition</b>	•

## Driving functions (continued)

<b>Start reminder</b>	<ul style="list-style-type: none"><li>•</li></ul>
<b>Parking Assist</b>	<ul style="list-style-type: none"><li>•</li></ul>
<b>Lane Change Assist</b>	<ul style="list-style-type: none"><li>•</li></ul>
<b>Automatic Ramp Entry/Exit Assist</b>	<ul style="list-style-type: none"><li>•</li></ul>
<b>Highway sections</b>	<ul style="list-style-type: none"><li>• Urban sections;</li><li>• Expressway sections</li></ul>

## Exterior lighting

<b>Low beam light source</b>	<ul style="list-style-type: none"><li>• LED</li></ul>
<b>High beam light source</b>	<ul style="list-style-type: none"><li>• LED</li></ul>
<b>LED daytime running lights</b>	<ul style="list-style-type: none"><li>•</li></ul>
<b>Adaptive high and low beam</b>	<ul style="list-style-type: none"><li>•</li></ul>
<b>Automatic headlights</b>	<ul style="list-style-type: none"><li>•</li></ul>
<b>Height-adjustable headlights</b>	<ul style="list-style-type: none"><li>•</li></ul>
<b>Headlight Delay Off</b>	<ul style="list-style-type: none"><li>•</li></ul>
<b>Lighting features</b>	<ul style="list-style-type: none"><li>• Matrix</li></ul>
<b>Scene Light Language</b>	<ul style="list-style-type: none"><li>•</li></ul>
<b>Assisted Driving Light</b>	<ul style="list-style-type: none"><li>•</li></ul>

## Exterior mirrors

<b>Exterior mirror function</b>	<ul style="list-style-type: none"><li>• Electric adjustment;</li><li>• Electric folding;</li><li>• Rearview mirror memory;</li><li>• Rearview mirror heating;</li><li>• Automatic downturning when reversing;</li><li>• Automatic folding when locked;</li><li>• Automatic anti-glare</li></ul>
---------------------------------	---

## Appearance/anti-theft

<b>Rim material</b>	<ul style="list-style-type: none"><li>• Aluminum alloy</li></ul>
<b>Electric trunk</b>	<ul style="list-style-type: none"><li>•</li></ul>
<b>Electronic engine immobilizer</b>	<ul style="list-style-type: none"><li>•</li></ul>
<b>Central locking system in the car</b>	<ul style="list-style-type: none"><li>•</li></ul>
<b>Key Type</b>	<ul style="list-style-type: none"><li>• Remote key;</li><li>• Bluetooth key;</li><li>• UWB digital key</li></ul>
<b>Keyless start system</b>	<ul style="list-style-type: none"><li>•</li></ul>
<b>Keyless entry function</b>	<ul style="list-style-type: none"><li>• Full vehicle</li></ul>

## Appearance/anti-theft (continued)

<b>Hands-free Trunk</b>	•
<b>Electric trunk position memory</b>	•
<b>Roof rack</b>	•
<b>Remote start function</b>	•
<b>Battery preheating</b>	•
<b>Active closed grille</b>	•
<b>Electric door closing</b>	• Full vehicle
<b>Discharge to the outside</b>	•
<b>Side pedals</b>	○ Electric (USD 1,471)

## Skylight/Glass

<b>Sunroof Type</b>	• Sectional unopenable skylight
<b>Front/rear electric windows</b>	Front •/Rear •
<b>One-touch window lifting function</b>	• Full vehicle
<b>Window anti-pinch function</b>	•
<b>Car makeup mirror</b>	• Main driver's lamp; • co-pilot's lamp
<b>Rear wiper</b>	•
<b>Rain sensor wiper function</b>	• Rainfall-sensing
<b>Rear side window sunshades</b>	• Electric
<b>Rear side privacy glass</b>	•
<b>Side window multi-layer soundproof glass</b>	• Front row; • Rear row

## Interior and exterior color

<b>Exterior Color</b>	Extreme Night Black #000000 extreme daytime white #FFFFFF Xuanwu Gray #83878A moon sea ash #3B3C3E Yun Po Hong #702137
<b>Interior Color</b>	Black Red Shadow Red #000000 #733C3B Pure black #000000 Black White #000000 #F0F0F0 Black Brown #000000 #D3A98F

## Steering wheel/interior mirror

<b>Steering Wheel Material</b>	• Leather
--------------------------------	-----------

## Steering wheel/interior mirror (continued)

<b>Steering wheel position adjustment</b>	<ul style="list-style-type: none"><li>• Electric up and down front and rear adjustment</li></ul>
<b>Multi-function steering wheel</b>	<ul style="list-style-type: none"><li>•</li></ul>
<b>Heated Steering Wheel</b>	<ul style="list-style-type: none"><li>•</li></ul>
<b>Steering wheel memory</b>	<ul style="list-style-type: none"><li>•</li></ul>
<b>Trip computer display screen</b>	<ul style="list-style-type: none"><li>• Color</li></ul>
<b>Full LCD instrument panel</b>	<ul style="list-style-type: none"><li>•</li></ul>
<b>LCD instrument size</b>	<ul style="list-style-type: none"><li>•13.02 inch</li></ul>
<b>Interior rearview mirror function</b>	<ul style="list-style-type: none"><li>• Automatic anti-glare; ○ Streaming media</li></ul>
<b>Gear shifting</b>	<ul style="list-style-type: none"><li>• Electronic gear shift</li></ul>
<b>ETC Device</b>	<ul style="list-style-type: none"><li>•</li></ul>
<b>AR-HUD Augmented Reality Head-Up Display</b>	<ul style="list-style-type: none"><li>•</li></ul>
<b>HUD head up size</b>	<ul style="list-style-type: none"><li>•44 inch</li></ul>

## Intelligent configuration

<b>Connected Car Services</b>	<ul style="list-style-type: none"><li>•</li></ul>
<b>OTA Updates</b>	<ul style="list-style-type: none"><li>•</li></ul>
<b>4G/5G Network</b>	<ul style="list-style-type: none"><li>•5G</li></ul>
<b>Mobile APP remote function</b>	<ul style="list-style-type: none"><li>• Door Ventilation Control; • Window control; • Vehicle startup; • Charging management; • Air conditioning control; • Seat heating; • Seat; • Vehicle condition inquiry/diagnosis; • Vehicle location/car search; • Car owner service (find charging piles, gas stations, parking lots, etc.); • Appointment for maintenance/repair</li></ul>
<b>Wi-Fi hotspots</b>	<ul style="list-style-type: none"><li>•</li></ul>
<b>In-vehicle Biometric Monitoring</b>	<ul style="list-style-type: none"><li>•</li></ul>
<b>Simulate sound waves</b>	<ul style="list-style-type: none"><li>•</li></ul>
<b>Car KTV</b>	<ul style="list-style-type: none"><li>•</li></ul>

## Driving Control

<b>Driving mode switch</b>	<ul style="list-style-type: none"><li>• Sport; • Economical; • Standard/Comfort; • Off-Road; • Snow; • Customize/Personalize</li></ul>
<b>Automatic parking</b>	<ul style="list-style-type: none"><li>•</li></ul>

## Driving Control (continued)

<b>Steep slope descent</b>	•
<b>Hill start assist</b>	•
<b>Energy recovery system</b>	•
<b>Variable suspension function</b>	• Suspension damping adjustment; • Suspension height adjustment
<b>Air Suspension</b>	•
<b>Towing mode</b>	○

## Driving Hardware

<b>Front/rear parking radar</b>	Front •/Rear •
<b>Driving Assistance Camera System</b>	• 360-degree panoramic image; • Vehicle side blind area image
<b>Front perception camera</b>	• Binocular
<b>Number of cameras</b>	• 10 ○11 one
<b>Number of ultrasonic radars</b>	• 12
<b>Transparent chassis/540-degree imaging</b>	•
<b>Millimeter wave radar quantity</b>	• 5
<b>Assisted driving chip</b>	NVIDIA Drive Thor ○2 seed NVIDIA Drive Thor
<b>Total chip computing power</b>	•700 TOPS;○1400 TOPS
<b>Number of LiDARs</b>	• 1; ○ 5
<b>Laser radar line number</b>	○520 line
<b>Number of cameras in the car</b>	• 1

## In-car charging

<b>Multimedia/charging port</b>	•Type-C
<b>Number of USB/Type-C ports</b>	• 3 in the front row Back row 2 one Front row 3 one Back row 4 one
<b>Mobile phone wireless charging function</b>	• Front row
<b>220V/230V power supply</b>	•
<b>Luggage compartment 12V power socket</b>	•
<b>USB/Type-C maximum charging power</b>	•100W

## In-car charging (continued)

Mobile phone wireless charging power	•50W
--------------------------------------	------

## Optional Package

Optional Package	Rear ceiling screen set (10000 yuan Contains Double 8295 Intelligent Cockpit Computing Platform 17 inch 3K OLED Rear ceiling screen Streaming media interior rearview mirror Smart remote control) Six Seat Pleasant Bag (10000 yuan Contains Second row of independent seats *2 Second row left seat function (Heating Ventilation Memory 22 Point massage with percussion Knead 4 Adjusting the lumbar support to the electric) Second row right Eames recliner heated Ventilation Personalized recumbent position memory 22 Point massage with percussion Knead 4 Adjusting the lumbar support to the electric 4 Electric adjustment of leg rest 2 To electric pedal adjustment) Second row of face-blowing air outlets Three-row seat function (Heating Electric backrest adjustment Electric folding backrest One-key reset of backrest) Three-row independent cup holder *2 Three rows of ceiling reading lights *2 three rows Type-C Interface 27W*2 Three-row head-chest integrated side airbag *2 Three-row air conditioning independent air outlet *4 Three rows of independent microphones *2) Thousands of miles H9 (25000 yuan Contains 5 Lidar NVIDIA Double Thor-U Computing power 1400TOPS)
------------------	---

"●" = Standard equipment

"-" = Not available

"○" = Optional equipment.

Note: These are Chinese market vehicles. Warranty coverage is not available outside of China.