

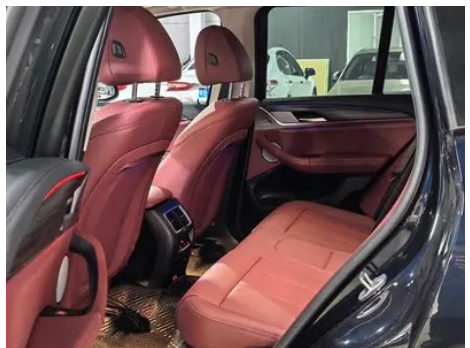
Vehicle Detail Report

**BMW X3 2023 xDrive30i Leading Type M
Obsidian Night Suit**

Basic Information

Brand	BMW
Mileage	51,000 km
Color	Black
First Registration	2024-05-01
Transfer Count	0

Vehicle Images





Vehicle Condition

1. Front bumper, Scrape. 2. Rear bumper, Paint chip, Signs of removal. 3. Left front door, Scratch damage. 4. Left rear door, Paint chip, Scratch. 5. Left front fender, Paint chip, Scratch damage. 6. Windshield, Stone chip.

Configuration Information

Model Information

Model Name	BMW 2023 X3 xDrive30i Luxury Edition M Night Sky Package
Launch Date	2023.05

Basic parameters

Vehicle Class	Mid-size SUV
Energy Type	Gasoline
Maximum Power (kW)	180
Maximum Torque (N·m)	350
Transmission	8-gear manual integration
Body Type	SUV
Engine	2.0T 245 horsepower L4
Dimensions (L×W×H) (mm)	4737*1891*1689
Official 0-100 km/h Acceleration (s)	6.8
Top Speed (km/h)	230
Curb Weight (kg)	1880
Maximum Gross Weight (kg)	2510

Basic parameters (continued)

WLTP Combined Fuel Consumption (L/100km)	8.5
---	-----

engine

Engine Model	B48B20G
Displacement (mL)	1998
Displacement (L)	2.0
Induction Type	Turbocharging
Cylinder Arrangement	L
Number of Cylinders	4
Valves per Cylinder	4
Valve Train	DOHC
Maximum Power (PS)	245
Max Power Speed (rpm)	5000-6500
Max Torque Speed (rpm)	1450-4800
Maximum net power (kW)	180
Fuel Grade	95.
Fuel Delivery System	Direct injection
Cylinder Head Material	Aluminum alloy
Cylinder Block Material	Aluminum alloy
Engine layout	Longitudinal

Screen/System

Central control color screen	<ul style="list-style-type: none">• Touch LCD screen
Infotainment Screen Size	<ul style="list-style-type: none">• 12.3 inches
Bluetooth/In-car Phone	<ul style="list-style-type: none">•
Smartphone Integration/Mirroring	<ul style="list-style-type: none">• Support CarPlay;• Support CarLife
Voice recognition control system	<ul style="list-style-type: none">• Multimedia system;• Navigation;• Telephone
In-vehicle intelligent system	<ul style="list-style-type: none">• iDrive

Body

Length (mm)	4737
Width (mm)	1891
Height (mm)	1689
Wheelbase (mm)	2864

Body (continued)

Front Track (mm)	1610
Rear Track (mm)	1594
Door Opening Type	swing door
Number of Doors	5
Number of Seats	5
Fuel Tank Capacity (L)	65
Trunk volume (L)	-
Drag Coefficient (Cd)	-
Approach Angle (°)	24
Departure Angle (°)	22

Gearbox

Abbreviation	8-gear manual integration
Number of Gears	8
Transmission Type	Automatic Transmission with Manual Mode (AT)

Chassis steering

Drive Type	Front-engine, All-wheel drive (F-AWD)
Four-wheel drive	Timely four-wheel drive
Central differential structure	Multi-plate clutch
Front Suspension Type	Dual-ball-joint MacPherson independent suspension
Rear Suspension Type	Multi-link independent suspension
Power Steering Type	Electric power assistance
Vehicle structure	bearing type

Seat Configuration

Seat Material	<ul style="list-style-type: none">• Imitation leather
Main seat adjustment	<ul style="list-style-type: none">• Front and rear adjustment;• Backrest adjustment;• Height adjustment (4-way);• Leg rest adjustment;• Lumbar support (4-way)
Co-seat adjustment method	<ul style="list-style-type: none">• Front and rear adjustment;• Backrest adjustment;• Height adjustment (4-way);• Leg support adjustment

Seat Configuration (continued)

Electric adjustment of driver's seat and passenger seat	Main •/Deputy •
Front seat functions	• Heating
Electric seat memory function	• Driving position
Front passenger seat rear adjustable buttons	-
Second row seat adjustment	• Backrest adjustment
Rear seat folding	• Proportional down
Front/rear center armrest	Front •/Rear •
Rear cup holder	•

Active safety

Anti-lock Braking System (ABS)	•
Electronic Brakeforce Distribution (EBD/CBC)	•
Brake Assist System (EBA/BAS/BA)	•
Traction Control System (ASR/TCS/TRC)	•
Electronic Stability Control (ESC/ESP/DSC)	•
Tire Pressure Monitoring System (TPMS)	• Tire pressure display
Seat Belt Reminder	• Front row
ISOFIX Child Seat Anchors	•
Lane Departure Warning System (LDWS)	○
Autonomous Emergency Braking (AEB)	•
Driver Fatigue Detection	•
Forward Collision Warning (FCW)	•
Emergency Call System (eCall)	•
Built-in Dashcam	•

Air conditioning/refrigerator

Air conditioning/refrigerator (continued)

Air conditioning temperature control method	• Automatic air conditioning
Rear Independent Climate Control	•
Rear seat air vents	•
Temperature zone control	•
Car air purifier	-
In-cabin PM2.5 Filter	•

Passive safety

Driver/passenger airbag	Main •/Deputy •
Front/rear side airbags	Front •/Rear-
Front/rear head airbags (curtain airbags)	Front •/Rear •
Run-flat tires	•

Wheel brake

Front Brake Type	Ventilation disc
Rear Brake Type	Ventilation disc
Parking brake type	Electronic Parking
Front Tire Size	245/45 R20
Rear Tire Size	275/40 R20
Spare Tire Size	None

Audio/Interior Lighting

Speaker Brand Name	• Harman/Kardon Harman Kardon
Number of speakers	• 12 horns; ○ 16 horns
Interior ambient lighting	• 11 colors

Driving functions

Navigation traffic information display	•
Lane assist	○
Lane Keeping Assist System	○
Cruise control system	• Cruise control; ○ Adaptive cruise control (USD 1,618); ○ Full-speed adaptive cruise control
Satellite navigation system	•
Driving assistance level	○L2

Driving functions (continued)

Rear Cross Traffic Alert	○
Lane centering	○
Road traffic sign recognition	○
Tracking reverse	•
Parking Assist	•
Lane Change Assist	○

Exterior lighting

Low beam light source	•LED
High beam light source	•LED
LED daytime running lights	•
Adaptive high and low beam	•
Automatic headlights	•
Height-adjustable headlights	•
Headlight Delay Off	•
Turn headlights	•

Exterior mirrors

Exterior mirror function	• Electric adjustment; • Electric folding; • Rearview mirror memory; • Rearview mirror heating; • Automatic downturning when reversing; • Automatic folding when locked; • Automatic anti-glare
---------------------------------	---

Appearance/anti-theft

Rim material	• Aluminum alloy
Electric trunk	•
Electronic engine immobilizer	•
Central locking system in the car	•
Key Type	• Remote key
Keyless start system	•
Keyless entry function	• Full car
Appearance Kit	• Sports style
Hands-free Trunk	•

Appearance/anti-theft (continued)

Electric trunk position memory	<ul style="list-style-type: none">•
Roof rack	<ul style="list-style-type: none">•
Remote start function	<ul style="list-style-type: none">•

Skylight/Glass

Sunroof Type	<ul style="list-style-type: none">• Openable panoramic sunroof
Front/rear electric windows	Front •/Rear •
One-touch window lifting function	<ul style="list-style-type: none">• Full car
Window anti-pinch function	<ul style="list-style-type: none">•
Car makeup mirror	<ul style="list-style-type: none">• Main driver's lamp; • co-pilot's lamp
Rear wiper	<ul style="list-style-type: none">•
Rain sensor wiper function	<ul style="list-style-type: none">• Rainfall-sensing

Interior and exterior color

Exterior Color	Carbon black:#232A30; Quantum blue:#273F7C; Fragrant red:#810B17; Cashmi silver:#C6C1B4; Ore white:#E7E7E7; Mysterious ash:#262626
Interior Color	Black/Mocha:#000000/#423534; Black:#000000; Black/Volcanic Red:#000000/#8A3D47

Steering wheel/interior mirror

Steering Wheel Material	<ul style="list-style-type: none">• Leather
Steering wheel position adjustment	<ul style="list-style-type: none">• Manual up and down front and rear adjustment
Multi-function steering wheel	<ul style="list-style-type: none">•
Heated Steering Wheel	-
Steering wheel memory	-
Trip computer display screen	<ul style="list-style-type: none">• Color
Full LCD instrument panel	<ul style="list-style-type: none">•
LCD instrument size	<ul style="list-style-type: none">• 12.3 inches
Interior rearview mirror function	<ul style="list-style-type: none">• Automatic anti-glare

Steering wheel/interior mirror (continued)

Gear shifting	• Electronic gear shift
HUD Head Up Digital Display	○(USD 1,471)
ETC Device	○(USD 147)
Steering Wheel Shift Paddles	•

Intelligent configuration

Connected Car Services	•
OTA Updates	•
4G/5G Network	•4G
Mobile APP remote function	• Door control; • Vehicle startup; • Air conditioning control; • Vehicle condition inquiry/diagnosis; • Vehicle location/vehicle search; • Vehicle owner service (searching for charging piles, gas stations, parking lots, etc.); • Appointment maintenance/repair
Wi-Fi hotspots	○

Driving Control

Driving mode switch	• Sport; • Economy; • Standard/Comfort; • Customization/Personalization
Automatic parking	•
Steep slope descent	•
Hill start assist	•
Engine start-stop technology	•

Driving Hardware

Front/rear parking radar	Front •/Rear •
Driving Assistance Camera System	• 360-degree panoramic image

In-car charging

Multimedia/charging port	•USB;•Type-C
Number of USB/Type-C ports	• 2 in the front row/2 in the back row
Mobile phone wireless charging function	○ Front row

Optional Package

Optional Package (continued)

Optional Package	Silver suit (USD 0; Including: aluminum satin exterior components, silver window frame trim, silver aluminum roof rack, satin silver grille frame); Entertainment package 3(USD 1,103; Including: Harman/Kardon Harman Kardon high-end sound system, mobile phone wireless charging, Wi-Fi hot spots); Pro(USD 2,647; Including: traffic congestion assistance, lane change assistance, cruise speed setting assistance, emergency one-button stop assistance, etc.)
-------------------------	--

"●" = Standard equipment

"-" = Not available

"○" = Optional equipment.

Note: These are Chinese market vehicles. Warranty coverage is not available outside of China.