

# Vehicle Detail Report

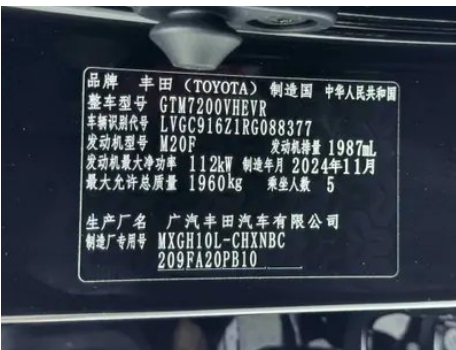
## Toyota Frontlander 2024 2.0L Intelligent electric hybrid double engine Leading Edition

### Basic Information

Brand	Toyota
Mileage	7,000 km
Color	Black
First Registration	2025-02-01
Transfer Count	0

### Vehicle Images





## Vehicle Condition

1. Driver's seat rails and frame, Signs of removal. 2. Front passenger seat rails and frame, Signs of removal.

## Configuration Information

### Model Information

## Model Information (continued)

<b>Model Name</b>	Toyota Frontlander 2024 2.0L Intelligent electric hybrid double engine Leading Edition
<b>Launch Date</b>	2024.07

## Basic parameters

<b>Vehicle Class</b>	Compact SUV
<b>Energy Type</b>	Hybrid Electric Vehicle (HEV)
<b>Maximum Power (kW)</b>	112
<b>Maximum Torque (N·m)</b>	188
<b>Transmission</b>	E-CVT continuously variable transmission
<b>Body Type</b>	SUV
<b>Engine</b>	2.0L 152 horsepower L4
<b>Dimensions (L×W×H) (mm)</b>	4485*1825*1620
<b>Official 0-100 km/h Acceleration (s)</b>	-
<b>Top Speed (km/h)</b>	180
<b>Curb Weight (kg)</b>	1440
<b>Maximum Gross Weight (kg)</b>	1960
<b>Electric Motor (PS)</b>	113
<b>WLTP Combined Fuel Consumption (L/100km)</b>	4.58

## engine

<b>Engine Model</b>	M20F
<b>Displacement (mL)</b>	1987
<b>Displacement (L)</b>	2.0
<b>Induction Type</b>	Natural aspiration
<b>Cylinder Arrangement</b>	L
<b>Number of Cylinders</b>	4
<b>Valves per Cylinder</b>	4
<b>Compression Ratio</b>	14
<b>Valve Train</b>	DOHC
<b>Maximum Power (PS)</b>	152
<b>Max Power Speed (rpm)</b>	6000
<b>Max Torque Speed (rpm)</b>	4400-5200

## engine (continued)

<b>Maximum net power (kW)</b>	112
<b>Fuel Grade</b>	92.
<b>Fuel Delivery System</b>	Mixed injection
<b>Cylinder Head Material</b>	Aluminum alloy
<b>Cylinder Block Material</b>	Aluminum alloy
<b>Engine layout</b>	Horizontal
<b>Engine-specific technologies</b>	VVT-iE□ VVT-i

## Electric Motor

<b>Motor Type</b>	Permanent magnet/synchronous
<b>Total Electric Motor Power (kW)</b>	83
<b>Total Electric Motor Torque (N·m)</b>	206
<b>Front Electric Motor Max Power (kW)</b>	83
<b>Front Electric Motor Max Torque (N·m)</b>	206
<b>System total power (kW)</b>	144
<b>Number of drive motors</b>	Single motor
<b>Motor Layout</b>	Front-end
<b>Battery Type</b>	Ternary lithium battery
<b>Total Electric Motor Power (PS)</b>	113
<b>Battery Cell Brand</b>	Ningde era (Jiangsu era)
<b>Battery Pack Warranty</b>	First Owner Lifetime Warranty/Non-Operating (Liability Exemption Terms Subject to Official)
<b>System Combined Horsepower (Ps)</b>	196

## Screen/System

<b>Central control color screen</b>	• Touch LCD screen
<b>Infotainment Screen Size</b>	• 10.25 inches
<b>Bluetooth/In-car Phone</b>	•
<b>Smartphone Integration/Mirroring</b>	• Apple CarPlay support; • Baidu CarLife support; • HUAWEI HiCar support

## Body

## Body (continued)

<b>Length (mm)</b>	4485
<b>Width (mm)</b>	1825
<b>Height (mm)</b>	1620
<b>Wheelbase (mm)</b>	2640
<b>Front Track (mm)</b>	1565
<b>Rear Track (mm)</b>	1580
<b>Door Opening Type</b>	swing door
<b>Number of Doors</b>	5
<b>Number of Seats</b>	5
<b>Fuel Tank Capacity (L)</b>	36
<b>Trunk volume (L)</b>	427
<b>Drag Coefficient (Cd)</b>	-
<b>Approach Angle (°)</b>	12
<b>Departure Angle (°)</b>	20
<b>Minimum Turning Radius (m)</b>	5.2

## Gearbox

<b>Abbreviation</b>	E-CVT continuously variable transmission
<b>Number of Gears</b>	stepless speed change
<b>Transmission Type</b>	Electronic Continuously Variable Transmission (E-CVT)

## Chassis steering

<b>Drive Type</b>	Front-engine, Front-wheel drive (FF)
<b>Front Suspension Type</b>	MacPherson independent suspension
<b>Rear Suspension Type</b>	Torsion beam non-independent suspension
<b>Power Steering Type</b>	Electric power assistance
<b>Vehicle structure</b>	bearing type

## Seat Configuration

<b>Seat Material</b>	<ul style="list-style-type: none"><li>Fabric</li></ul>
<b>Main seat adjustment</b>	<ul style="list-style-type: none"><li>Front and rear adjustment;</li><li>Backrest adjustment;</li><li>Height adjustment (2-way)</li></ul>
<b>Co-seat adjustment method</b>	<ul style="list-style-type: none"><li>Front and rear adjustment;</li><li>Backrest adjustment</li></ul>

## Seat Configuration (continued)

<b>Electric adjustment of driver's seat and passenger seat</b>	-
<b>Front passenger seat rear adjustable buttons</b>	-
<b>Second row seat adjustment</b>	• Backrest adjustment
<b>Rear seat folding</b>	• Proportional down
<b>Front/rear center armrest</b>	Front •/Rear-
<b>Rear cup holder</b>	•
<b>Sports style seats</b>	•

## Active safety

<b>Anti-lock Braking System (ABS)</b>	•
<b>Electronic Brakeforce Distribution (EBD/CBC)</b>	•
<b>Brake Assist System (EBA/BAS/BA)</b>	•
<b>Traction Control System (ASR/TCS/TRC)</b>	•
<b>Electronic Stability Control (ESC/ESP/DSC)</b>	•
<b>Tire Pressure Monitoring System (TPMS)</b>	• Tire pressure display
<b>Seat Belt Reminder</b>	• Full vehicle
<b>ISOFIX Child Seat Anchors</b>	•
<b>Lane Departure Warning System (LDWS)</b>	•
<b>Autonomous Emergency Braking (AEB)</b>	•
<b>Driver Fatigue Detection</b>	-
<b>Forward Collision Warning (FCW)</b>	•
<b>Low Speed Alert</b>	•
<b>Emergency Call System (eCall)</b>	•

## Air conditioning/refrigerator

<b>Air conditioning temperature control method</b>	• Automatic air conditioning
--	------------------------------

## Air conditioning/refrigerator (continued)

<b>Rear Independent Climate Control</b>	-
<b>Rear seat air vents</b>	-
<b>Temperature zone control</b>	•
<b>Car air purifier</b>	-
<b>In-cabin PM2.5 Filter</b>	•

## Passive safety

<b>Driver/passenger airbag</b>	Main •/Deputy •
<b>Front/rear side airbags</b>	Front •/Rear-
<b>Front/rear head airbags (curtain airbags)</b>	Front •/Rear •
<b>Knee airbag</b>	• Driver's knee airbag

## Wheel brake

<b>Front Brake Type</b>	Ventilation disc
<b>Rear Brake Type</b>	Disc
<b>Parking brake type</b>	Electronic Parking
<b>Front Tire Size</b>	215/60 R17
<b>Rear Tire Size</b>	215/60 R17
<b>Spare Tire Size</b>	Not full-size

## Audio/Interior Lighting

<b>Number of speakers</b>	• 4 speakers
---------------------------	--------------

## Driving functions

<b>Navigation traffic information display</b>	-
<b>Lane assist</b>	-
<b>Lane Keeping Assist System</b>	•
<b>Cruise control system</b>	• Full speed adaptive cruise
<b>Satellite navigation system</b>	-
<b>Driving assistance level</b>	•L2
<b>Lane centering</b>	•
<b>Road traffic sign recognition</b>	•
<b>Driver assistance systems</b>	•Toyota Safety Sense
<b>Parking Assist</b>	-

## Exterior lighting

## Exterior lighting (continued)

<b>Low beam light source</b>	• Halogen
<b>High beam light source</b>	• Halogen
<b>LED daytime running lights</b>	-
<b>Adaptive high and low beam</b>	•
<b>Automatic headlights</b>	•
<b>Height-adjustable headlights</b>	•
<b>Headlight Delay Off</b>	•

## Exterior mirrors

<b>Exterior mirror function</b>	• Electric adjustment
---------------------------------	-----------------------

## Appearance/anti-theft

<b>Rim material</b>	• Aluminum alloy
<b>Electronic engine immobilizer</b>	•
<b>Central locking system in the car</b>	•
<b>Key Type</b>	• Remote key
<b>Keyless start system</b>	•
<b>Keyless entry function</b>	• Front row
<b>Appearance Kit</b>	<input type="radio"/> Sports style

## Skylight/Glass

<b>Sunroof Type</b>	• Electric sunroof
<b>Front/rear electric windows</b>	Front •/Rear •
<b>One-touch window lifting function</b>	• Full vehicle
<b>Window anti-pinch function</b>	•
<b>Car makeup mirror</b>	• Main driving position; • First officer
<b>Rear wiper</b>	•

## Interior and exterior color

## Interior and exterior color (continued)

<b>Exterior Color</b>	ink crystal black #000000 Platinum Pearl White #DCE2E0 Crystal Silver #9BA8AB Glazed gold #A08842 Desert Gold #CAC2C0 Black Platinum Pearl White #000000 #DDE2E0 Black Glazed gold #000000 #A08842 Black Desert Gold #000000 #A69481 Black Coral red #000000 #820305 Coral red #820305 fluorite blue #1432DC
<b>Interior Color</b>	Black #414544 Black Gray #000000 #E6E6E6

## Steering wheel/interior mirror

<b>Steering Wheel Material</b>	<ul style="list-style-type: none"><li>• Plastic</li></ul>
<b>Steering wheel position adjustment</b>	<ul style="list-style-type: none"><li>• Manual up and down front and rear adjustment</li></ul>
<b>Multi-function steering wheel</b>	<ul style="list-style-type: none"><li>•</li></ul>
<b>Heated Steering Wheel</b>	-
<b>Steering wheel memory</b>	-
<b>Trip computer display screen</b>	<ul style="list-style-type: none"><li>• Color</li></ul>
<b>Full LCD instrument panel</b>	-
<b>LCD instrument size</b>	<ul style="list-style-type: none"><li>• 7 inches</li></ul>
<b>Interior rearview mirror function</b>	<ul style="list-style-type: none"><li>• Manual anti-glare</li></ul>
<b>Gear shifting</b>	<ul style="list-style-type: none"><li>• Mechanical gear shift</li></ul>
<b>ETC Device</b>	○(USD 88)

## Intelligent configuration

<b>Connected Car Services</b>	-
<b>OTA Updates</b>	-
<b>Mobile APP remote function</b>	<ul style="list-style-type: none"><li>• Door control Climate control Vehicle Condition Query Diagnosis Vehicle positioning Find car Appointment maintenance Maintenance</li></ul>

## Driving Control

<b>Driving mode switch</b>	<ul style="list-style-type: none"><li>• Movement</li></ul>
<b>Automatic parking</b>	<ul style="list-style-type: none"><li>•</li></ul>
<b>Hill start assist</b>	<ul style="list-style-type: none"><li>•</li></ul>
<b>Energy recovery system</b>	<ul style="list-style-type: none"><li>•</li></ul>

## Driving Hardware

## Driving Hardware (continued)

<b>Front/rear parking radar</b>	-
<b>Front perception camera</b>	• Monocular
<b>Number of cameras</b>	• 1
<b>Millimeter wave radar quantity</b>	• 1

## In-car charging

<b>Multimedia/charging port</b>	•Type-C
<b>Number of USB/Type-C ports</b>	• 1 in the front row/2 in the back row

## Optional Package

<b>Optional Package</b>	Sport kit (1 yuan Contains Dynamic surround body same color surround Highlight black front grille Rear Bumper Kit Bright silver metallic trim kit)
-------------------------	--

---

"●" = Standard equipment

"-" = Not available

"○" = Optional equipment.

Note: These are Chinese market vehicles. Warranty coverage is not available outside of China.