

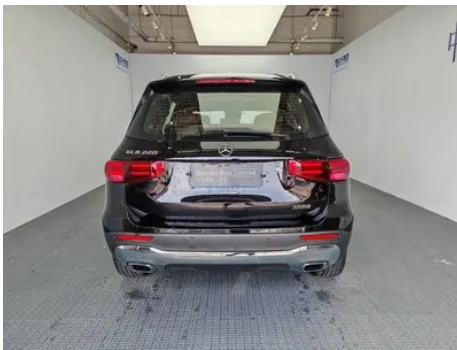
Vehicle Detail Report

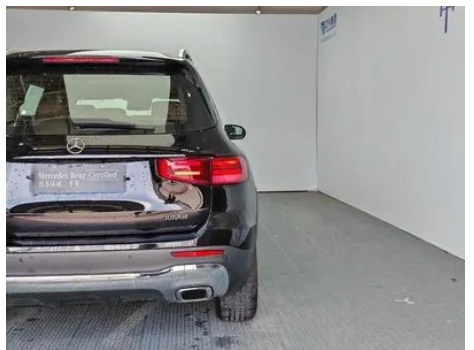
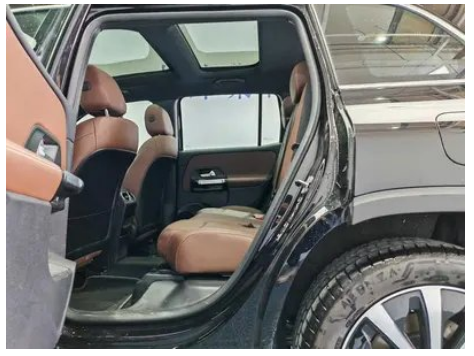
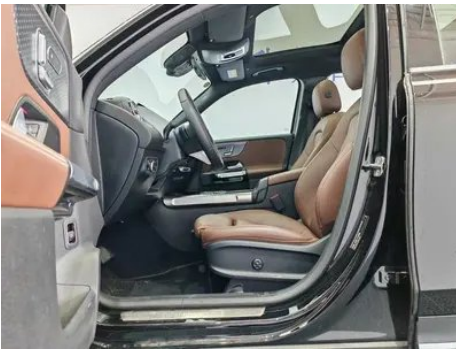
Mercedes-Benz GLB 2024 Restyling GLB 220 Fashionable

Basic Information

Brand	Mercedes-Benz
Mileage	15,900 km
Color	Black
First Registration	2025-04-01
Transfer Count	0

Vehicle Images





Vehicle Condition

1. Front bumper, Paint repair, Signs of removal. 2. Rear bumper, Paint repair, Signs of removal. 3. Right front door, Paint repair. 4. Right rear door, Paint repair, Body panel repair.

Configuration Information

Model Information

Model Information (continued)

Model Name	Mercedes-Benz GLB 2024 Restyling GLB 220 Fashionable
Launch Date	2024.05

Basic parameters

Vehicle Class	Compact SUV
Energy Type	Gasoline + 48V Mild Hybrid System
Maximum Power (kW)	140
Maximum Torque (N·m)	300
Transmission	8-speed wet dual-clutch
Body Type	SUV
Engine	2.0L 190 hp L4
Dimensions (L×W×H) (mm)	4638*1834*1706
Official 0-100 km/h Acceleration (s)	8.8
Top Speed (km/h)	210
Curb Weight (kg)	1718
Maximum Gross Weight (kg)	2325
WLTP Combined Fuel Consumption (L/100km)	7.02

engine

Engine Model	260 920
Displacement (mL)	1991
Displacement (L)	2.0
Induction Type	Turbocharging
Cylinder Arrangement	L
Number of Cylinders	4
Valves per Cylinder	4
Valve Train	DOHC
Maximum Power (PS)	190
Max Power Speed (rpm)	6100
Max Torque Speed (rpm)	1800-4000
Maximum net power (kW)	140
Fuel Grade	95.
Fuel Delivery System	Direct injection

engine (continued)

Cylinder Head Material	Aluminum alloy
Cylinder Block Material	Aluminum alloy
Engine layout	Horizontal

Screen/System

Central control color screen	<ul style="list-style-type: none">• Touch LCD screen
Infotainment Screen Size	<ul style="list-style-type: none">• 10.25 inches
Bluetooth/In-car Phone	<ul style="list-style-type: none">•
Smartphone Integration/Mirroring	<ul style="list-style-type: none">• Apple CarPlay support;• Android Auto support
Voice recognition control system	<ul style="list-style-type: none">• Multimedia system;• Navigation;• Telephone;• Air conditioning
In-vehicle intelligent system	<ul style="list-style-type: none">• MBUX
Voice assistant wake-up word	<ul style="list-style-type: none">• Hello, Mercedes
Continuous speech recognition	<ul style="list-style-type: none">•

Body

Length (mm)	4638
Width (mm)	1834
Height (mm)	1706
Wheelbase (mm)	2829
Front Track (mm)	1589
Rear Track (mm)	1589
Door Opening Type	swing door
Number of Doors	5
Number of Seats	7
Fuel Tank Capacity (L)	52
Trunk volume (L)	703-1430
Drag Coefficient (Cd)	-
Approach Angle (°)	20
Departure Angle (°)	25

Gearbox

Abbreviation	8-speed wet dual-clutch
Number of Gears	8

Gearbox (continued)

Transmission Type	Wet Dual-Clutch Transmission (DCT)
--------------------------	------------------------------------

Chassis steering

Drive Type	Front-engine, Front-wheel drive (FF)
Front Suspension Type	MacPherson independent suspension
Rear Suspension Type	Multi-link independent suspension
Power Steering Type	Electric power assistance
Vehicle structure	bearing type

Seat Configuration

Seat Material	<ul style="list-style-type: none">• Imitation leather
Main seat adjustment	<ul style="list-style-type: none">• Front and rear adjustment;• Backrest adjustment;• Height adjustment (4-way);• Leg rest adjustment;• Lumbar support (4-way)
Co-seat adjustment method	<ul style="list-style-type: none">• Front and rear adjustment;• Backrest adjustment;• Height adjustment (4-way);• Leg support adjustment
Electric adjustment of driver's seat and passenger seat	Main •/Deputy •
Front seat functions	<ul style="list-style-type: none">• Heating
Front passenger seat rear adjustable buttons	-
Second row seat adjustment	<ul style="list-style-type: none">• Front and rear adjustment;• Backrest adjustment
Rear seat folding	<ul style="list-style-type: none">• Proportional down
Front/rear center armrest	Front •/Rear •
Rear cup holder	<ul style="list-style-type: none">•
Seat Layout	•2-3-2

Active safety

Anti-lock Braking System (ABS)	<ul style="list-style-type: none">•
Electronic Brakeforce Distribution (EBD/CBC)	<ul style="list-style-type: none">•
Brake Assist System (EBA/BAS/BA)	<ul style="list-style-type: none">•
Traction Control System (ASR/TCS/TRC)	<ul style="list-style-type: none">•

Active safety (continued)

Electronic Stability Control (ESC/ESP/DSC)	•
Tire Pressure Monitoring System (TPMS)	• Tire pressure display
Seat Belt Reminder	• Front row; • Second row
ISOFIX Child Seat Anchors	•
Lane Departure Warning System (LDWS)	-
Autonomous Emergency Braking (AEB)	•
Driver Fatigue Detection	•
Forward Collision Warning (FCW)	•
Emergency Call System (eCall)	•

Air conditioning/refrigerator

Air conditioning temperature control method	• Automatic air conditioning
Rear Independent Climate Control	-
Rear seat air vents	•
Temperature zone control	-
Car air purifier	-
In-cabin PM2.5 Filter	-

Passive safety

Driver/passenger airbag	Main •/Deputy •
Front/rear side airbags	Front/rear rear side airbag (USD 500)
Front/rear head airbags (curtain airbags)	Front •/Rear •

Wheel brake

Front Brake Type	Ventilation disc
Rear Brake Type	Disc
Parking brake type	Electronic Parking
Front Tire Size	235/50 R19
Rear Tire Size	235/50 R19
Spare Tire Size	None

Audio/Interior Lighting

Audio/Interior Lighting (continued)

Speaker Brand Name	<input type="radio"/> Voice of Burmester Berlin (USD 1,206)
Number of speakers	<input type="checkbox"/> 7 horn; <input type="radio"/> 12 horn
Interior ambient lighting	<input type="checkbox"/> 64 colors

Driving functions

Navigation traffic information display	<input type="checkbox"/>
Lane assist	-
Lane Keeping Assist System	-
Cruise control system	<input type="checkbox"/> Full speed adaptive cruise
Satellite navigation system	<input type="checkbox"/>
Driving assistance level	<input type="checkbox"/> L1
Map Brand	<input type="checkbox"/> Gaud
Parking Assist	<input type="checkbox"/>

Exterior lighting

Low beam light source	<input type="checkbox"/> LED
High beam light source	<input type="checkbox"/> LED
LED daytime running lights	<input type="checkbox"/>
Adaptive high and low beam	<input type="checkbox"/>
Automatic headlights	<input type="checkbox"/>
Height-adjustable headlights	<input type="checkbox"/>
Headlight Delay Off	<input type="checkbox"/>
Lighting features	<input type="radio"/> MULTIBEAM LED headlights (USD 794)
Turn headlights	<input type="radio"/>

Exterior mirrors

Exterior mirror function	<input type="checkbox"/> Electric adjustment; <input type="checkbox"/> Electric folding; <input type="checkbox"/> Rearview mirror heating; <input type="checkbox"/> Automatically turn down when reversing; <input type="checkbox"/> Automatically fold when locking the car
---------------------------------	--

Appearance/anti-theft

Rim material	<input type="checkbox"/> Aluminum alloy
Electric trunk	<input type="checkbox"/>

Appearance/anti-theft (continued)

Electronic engine immobilizer	<ul style="list-style-type: none">•
Central locking system in the car	<ul style="list-style-type: none">•
Key Type	<ul style="list-style-type: none">• Remote key
Keyless start system	<ul style="list-style-type: none">•
Keyless entry function	<input type="radio"/> Full vehicle (USD 485)
Electric trunk position memory	<ul style="list-style-type: none">•
Roof rack	<ul style="list-style-type: none">•

Skylight/Glass

Sunroof Type	<ul style="list-style-type: none">• Sectional electric sunroof
Front/rear electric windows	Front <input type="checkbox"/> /Rear <input type="checkbox"/>
One-touch window lifting function	<ul style="list-style-type: none">• Full vehicle
Window anti-pinch function	<ul style="list-style-type: none">•
Car makeup mirror	<ul style="list-style-type: none">• Main driver's lamp; • co-pilot's lamp
Rear wiper	<ul style="list-style-type: none">•
Rain sensor wiper function	<ul style="list-style-type: none">• Rainfall-sensing

Interior and exterior color

Exterior Color	sea night blue #143882 Spacetime Silver #ACACAE obsidian black #000000 mountain gray #2F302A Arctic White #F4F4F4 Lava Red #B52E39 Matte Mountain Grey #424242
Interior Color	Black:#000000; Black/Brown:#000000/#543E41

Steering wheel/interior mirror

Steering Wheel Material	<ul style="list-style-type: none">• Leather
Steering wheel position adjustment	<ul style="list-style-type: none">• Manual up and down front and rear adjustment
Multi-function steering wheel	<ul style="list-style-type: none">•
Heated Steering Wheel	-
Steering wheel memory	-

Steering wheel/interior mirror (continued)

Trip computer display screen	<ul style="list-style-type: none">• Color
Full LCD instrument panel	<ul style="list-style-type: none">•
LCD instrument size	<ul style="list-style-type: none">• 10.25 inches
Interior rearview mirror function	<ul style="list-style-type: none">• Manual anti-glare
Gear shifting	<ul style="list-style-type: none">• Electronic gear shift
ETC Device	○(USD 441)
Steering Wheel Shift Paddles	<ul style="list-style-type: none">•

Intelligent configuration

Connected Car Services	<ul style="list-style-type: none">•
OTA Updates	<ul style="list-style-type: none">•
4G/5G Network	<ul style="list-style-type: none">•4G
Mobile APP remote function	<ul style="list-style-type: none">• Vehicle status check/diagnostics;• Vehicle location / find my car; • Service/repair appointment

Driving Control

Driving mode switch	<ul style="list-style-type: none">• Sport; • Economy; • Standard/ Comfort
Automatic parking	<ul style="list-style-type: none">•
Hill start assist	<ul style="list-style-type: none">•
Engine start-stop technology	<ul style="list-style-type: none">•

Driving Hardware

Front/rear parking radar	Front •/Rear •
Driving Assistance Camera System	<ul style="list-style-type: none">• Reversing image
Front perception camera	<ul style="list-style-type: none">• Monocular
Number of cameras	<ul style="list-style-type: none">• 2
Number of ultrasonic radars	<ul style="list-style-type: none">• 12

In-car charging

Multimedia/charging port	<ul style="list-style-type: none">•USB;•Type-C
Number of USB/Type-C ports	<ul style="list-style-type: none">• 3 in the front row/4 in the back row

"●" = Standard equipment

"□" = Not available

"○" = Optional equipment.

Note: These are Chinese market vehicles. Warranty coverage is not available outside of China.