

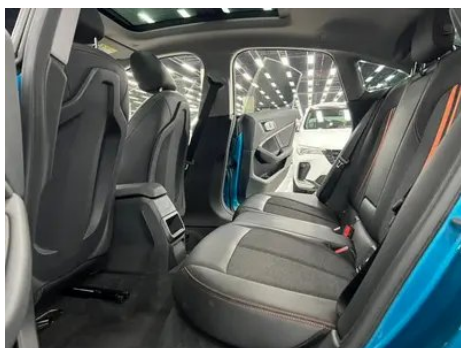
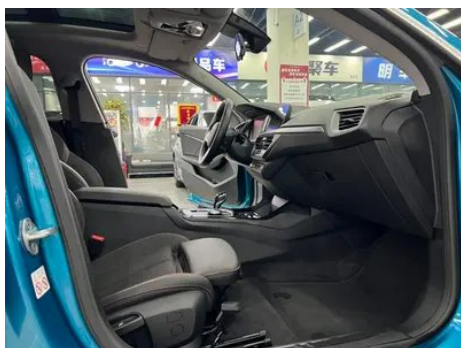
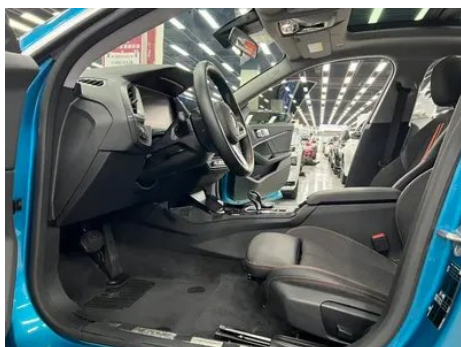
# Vehicle Detail Report

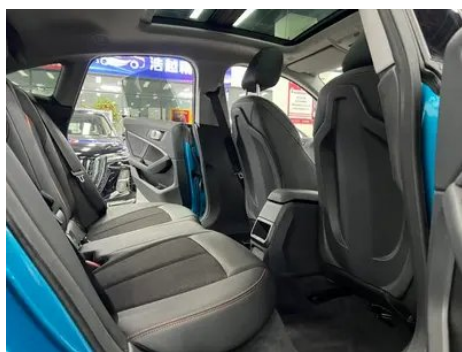
## BMW 2 Series 2021 225i Four-door coupe M Sports suit

### Basic Information

Brand	BMW
Mileage	39,000 km
Color	Blue
First Registration	2021-11-01
Transfer Count	0

### Vehicle Images





## Vehicle Condition

1. Original metal body panels with factory paint.

## Configuration Information

### Model Information

<b>Model Name</b>	BMW 2 Series (Imported) 2021 225i Four-Door Coupe M Sports Kit
<b>Launch Date</b>	2021.01

### Basic parameters

<b>Vehicle Class</b>	compact car
<b>Energy Type</b>	Gasoline
<b>Maximum Power (kW)</b>	141
<b>Maximum Torque (N·m)</b>	280
<b>Transmission</b>	7-speed wet dual-clutch
<b>Body Type</b>	Sedan
<b>Engine</b>	2.0L 192 hp L4
<b>Dimensions (L×W×H) (mm)</b>	4534*1800*1434

## Basic parameters (continued)

<b>Official 0-100 km/h Acceleration (s)</b>	7.2
<b>Top Speed (km/h)</b>	238
<b>Curb Weight (kg)</b>	1485
<b>Maximum Gross Weight (kg)</b>	1965
<b>NEDC Combined Fuel Consumption (L/100km)</b>	5.8

## engine

<b>Engine Model</b>	B48A20A
<b>Displacement (mL)</b>	1998
<b>Displacement (L)</b>	2.0
<b>Induction Type</b>	Turbocharging
<b>Cylinder Arrangement</b>	L
<b>Number of Cylinders</b>	4
<b>Valves per Cylinder</b>	4
<b>Valve Train</b>	DOHC
<b>Maximum Power (PS)</b>	192
<b>Max Power Speed (rpm)</b>	5000-6000
<b>Max Torque Speed (rpm)</b>	1350-4600
<b>Maximum net power (kW)</b>	141
<b>Fuel Grade</b>	95.
<b>Fuel Delivery System</b>	Direct injection
<b>Cylinder Head Material</b>	Aluminum alloy
<b>Cylinder Block Material</b>	Aluminum alloy
<b>Engine layout</b>	Horizontal

## Screen/System

<b>Central control color screen</b>	<ul style="list-style-type: none"><li>• Touch LCD screen</li></ul>
<b>Infotainment Screen Size</b>	<ul style="list-style-type: none"><li>• 10.25 inches</li></ul>
<b>Bluetooth/In-car Phone</b>	<ul style="list-style-type: none"><li>•</li></ul>
<b>Smartphone Integration/Mirroring</b>	<ul style="list-style-type: none"><li>• Support CarPlay;</li><li>• Support CarLife</li></ul>
<b>Voice recognition control system</b>	<ul style="list-style-type: none"><li>• Multimedia system;</li><li>• Navigation;</li><li>• Telephone;</li><li>• Air conditioning</li></ul>
<b>In-vehicle intelligent system</b>	<ul style="list-style-type: none"><li>• iDrive</li></ul>

## Screen/System (continued)

<b>Gesture Control</b>	○(USD 426)
------------------------	------------

## Body

<b>Length (mm)</b>	4534
<b>Width (mm)</b>	1800
<b>Height (mm)</b>	1434
<b>Wheelbase (mm)</b>	2670
<b>Front Track (mm)</b>	-
<b>Rear Track (mm)</b>	-
<b>Door Opening Type</b>	-
<b>Number of Doors</b>	4
<b>Number of Seats</b>	5
<b>Fuel Tank Capacity (L)</b>	50
<b>Trunk volume (L)</b>	-
<b>Drag Coefficient (Cd)</b>	-

## Gearbox

<b>Abbreviation</b>	7-speed wet dual-clutch
<b>Number of Gears</b>	7
<b>Transmission Type</b>	Wet Dual-Clutch Transmission (DCT)

## Chassis steering

<b>Drive Type</b>	Front-engine, Front-wheel drive (FF)
<b>Front Suspension Type</b>	MacPherson independent suspension
<b>Rear Suspension Type</b>	Multi-link independent suspension
<b>Power Steering Type</b>	Electric power assistance
<b>Vehicle structure</b>	bearing type

## Seat Configuration

<b>Seat Material</b>	○ Leather (USD 1,971); • Leather/fabric mix and match
<b>Main seat adjustment</b>	• Front and rear adjustment; • Backrest adjustment; • Height adjustment (4-way); • Leg support adjustment
<b>Co-seat adjustment method</b>	• Front and rear adjustment; • Backrest adjustment; • Height adjustment (2-way); ○ Height adjustment (4-way); • Leg support adjustment

## Seat Configuration (continued)

<b>Electric adjustment of driver's seat and passenger seat</b>	Electric adjustment of main/auxiliary co-pilot position (USD 382)
<b>Front seat functions</b>	<input type="radio"/> Heating (USD 500)
<b>Electric seat memory function</b>	<ul style="list-style-type: none"><li>• Driving position</li></ul>
<b>Front passenger seat rear adjustable buttons</b>	-
<b>Rear seat folding</b>	<ul style="list-style-type: none"><li>• Proportional down</li></ul>
<b>Front/rear center armrest</b>	Front <input type="checkbox"/> /Rear <input type="checkbox"/>
<b>Rear cup holder</b>	<ul style="list-style-type: none"><li>•</li></ul>
<b>Sports style seats</b>	<input type="radio"/> (USD 706)

## Active safety

<b>Anti-lock Braking System (ABS)</b>	<ul style="list-style-type: none"><li>•</li></ul>
<b>Electronic Brakeforce Distribution (EBD/CBC)</b>	<ul style="list-style-type: none"><li>•</li></ul>
<b>Brake Assist System (EBA/BAS/BA)</b>	<ul style="list-style-type: none"><li>•</li></ul>
<b>Traction Control System (ASR/TCS/TRC)</b>	<ul style="list-style-type: none"><li>•</li></ul>
<b>Electronic Stability Control (ESC/ESP/DSC)</b>	<ul style="list-style-type: none"><li>•</li></ul>
<b>Tire Pressure Monitoring System (TPMS)</b>	<ul style="list-style-type: none"><li>• Tire pressure display</li></ul>
<b>Seat Belt Reminder</b>	<ul style="list-style-type: none"><li>• Front row</li></ul>
<b>ISOFIX Child Seat Anchors</b>	<ul style="list-style-type: none"><li>•</li></ul>
<b>Lane Departure Warning System (LDWS)</b>	<input type="radio"/>
<b>Autonomous Emergency Braking (AEB)</b>	<input type="radio"/>
<b>Driver Fatigue Detection</b>	-
<b>Forward Collision Warning (FCW)</b>	<input type="radio"/>
<b>Emergency Call System (eCall)</b>	<ul style="list-style-type: none"><li>•</li></ul>

## Air conditioning/refrigerator

<b>Air conditioning temperature control method</b>	<ul style="list-style-type: none"><li>• Automatic air conditioning</li></ul>
--	--

## Air conditioning/refrigerator (continued)

<b>Rear Independent Climate Control</b>	-
<b>Rear seat air vents</b>	○
<b>Temperature zone control</b>	○(USD 779)
<b>Car air purifier</b>	-
<b>In-cabin PM2.5 Filter</b>	-

## Passive safety

<b>Driver/passenger airbag</b>	Main •/Deputy •
<b>Front/rear side airbags</b>	Front •/Rear-
<b>Front/rear head airbags (curtain airbags)</b>	Front •/Rear •
<b>Run-flat tires</b>	•

## Wheel brake

<b>Front Brake Type</b>	Ventilation disc
<b>Rear Brake Type</b>	Ventilation disc
<b>Parking brake type</b>	Electronic Parking
<b>Front Tire Size</b>	225/40 R18
<b>Rear Tire Size</b>	225/40 R18
<b>Spare Tire Size</b>	None

## Audio/Interior Lighting

<b>Speaker Brand Name</b>	○ Harman/Kardon Harman Kardon (USD 1,206)
<b>Number of speakers</b>	• 6 speakers; ○ 9 speakers (USD 500);○ 12 speakers (USD 1,206)
<b>Interior ambient lighting</b>	○ 6 colors (USD 426)

## Driving functions

<b>Navigation traffic information display</b>	•
<b>Lane assist</b>	○
<b>Lane Keeping Assist System</b>	○
<b>Cruise control system</b>	○ Constant speed cruise (USD 426);○ Adaptive cruise (USD 1,059)
<b>Satellite navigation system</b>	•
<b>Road traffic sign recognition</b>	○
<b>Tracking reverse</b>	•

## Driving functions (continued)

<b>Parking Assist</b>	•
-----------------------	---

## Exterior lighting

<b>Low beam light source</b>	•LED
<b>High beam light source</b>	•LED
<b>LED daytime running lights</b>	•
<b>Adaptive high and low beam</b>	○(USD 221)
<b>Automatic headlights</b>	•
<b>Front fog lights</b>	•LED
<b>Height-adjustable headlights</b>	•
<b>Headlight Delay Off</b>	•

## Exterior mirrors

<b>Exterior mirror function</b>	• Electric adjustment; • Electric folding; • Rearview mirror memory; • Rearview mirror heating; • Automatic downturning when reversing; • Automatic folding when locked; ○ Automatic anti-glare
---------------------------------	---

## Appearance/anti-theft

<b>Rim material</b>	• Aluminum alloy
<b>Electric trunk</b>	-
<b>Electronic engine immobilizer</b>	•
<b>Central locking system in the car</b>	•
<b>Key Type</b>	•Remote key; ○NFC/RFID key
<b>Keyless start system</b>	•
<b>Keyless entry function</b>	○ Full car (USD 706)
<b>Appearance Kit</b>	• Sports style
<b>Hands-free Trunk</b>	○
<b>Active closed grille</b>	•
<b>Frameless door design</b>	•

## Skylight/Glass

<b>Sunroof Type</b>	• Openable panoramic sunroof
<b>Front/rear electric windows</b>	Front •/Rear •

## Skylight/Glass (continued)

<b>One-touch window lifting function</b>	<ul style="list-style-type: none"><li>• Full car</li></ul>
<b>Window anti-pinch function</b>	<ul style="list-style-type: none"><li>•</li></ul>
<b>Car makeup mirror</b>	<ul style="list-style-type: none"><li>• Main driving position; • First officer</li></ul>
<b>Rear wiper</b>	-
<b>Rain sensor wiper function</b>	<ul style="list-style-type: none"><li>• Rainfall-sensing</li></ul>

## Interior and exterior color

<b>Exterior Color</b>	Coast blue:#5DB9DE; Sky blue:#3C96F0; Gemstone green:#252425; Storm ash:#505A64; Ore ash:#949A9C; Melbourne Red:#610303; Snow Mountain White:#FAFAFA
<b>Interior Color</b>	Black:#000000; Black/Lava Red:#000000/#960A0A

## Steering wheel/interior mirror

<b>Steering Wheel Material</b>	<ul style="list-style-type: none"><li>• Leather</li></ul>
<b>Steering wheel position adjustment</b>	<ul style="list-style-type: none"><li>• Manual up and down front and rear adjustment</li></ul>
<b>Multi-function steering wheel</b>	<ul style="list-style-type: none"><li>•</li></ul>
<b>Heated Steering Wheel</b>	-
<b>Steering wheel memory</b>	-
<b>Trip computer display screen</b>	<ul style="list-style-type: none"><li>• Color</li></ul>
<b>Full LCD instrument panel</b>	<ul style="list-style-type: none"><li>•</li></ul>
<b>LCD instrument size</b>	<ul style="list-style-type: none"><li>• 10.25 inches</li></ul>
<b>Interior rearview mirror function</b>	<ul style="list-style-type: none"><li>• Manual anti-glare; ○ Automatic anti-glare</li></ul>
<b>Gear shifting</b>	<ul style="list-style-type: none"><li>• Electronic gear shift</li></ul>
<b>HUD Head Up Digital Display</b>	○(USD 1,265)

## Intelligent configuration

<b>Connected Car Services</b>	<ul style="list-style-type: none"><li>•</li></ul>
<b>OTA Updates</b>	<ul style="list-style-type: none"><li>•</li></ul>
<b>4G/5G Network</b>	<ul style="list-style-type: none"><li>•4G</li></ul>
<b>Mobile APP remote function</b>	<ul style="list-style-type: none"><li>•</li></ul>

## Driving Control

<b>Driving mode switch</b>	• Sport; • Economy; • Standard/Comfort; • Customization/Personalization
<b>Automatic parking</b>	•
<b>Hill start assist</b>	•
<b>Engine start-stop technology</b>	•

## Driving Hardware

<b>Front/rear parking radar</b>	Front •/Rear •
<b>Driving Assistance Camera System</b>	• Reversing image

## In-car charging

<b>Multimedia/charging port</b>	•USB;•Type-C
<b>Number of USB/Type-C ports</b>	• 2 in the front row
<b>Mobile phone wireless charging function</b>	○ Front row (USD 559)

---

"●" = Standard equipment

"\_" = Not available

"○" = Optional equipment.

Note: These are Chinese market vehicles. Warranty coverage is not available outside of China.