

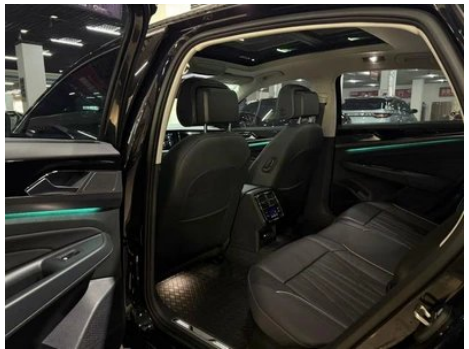
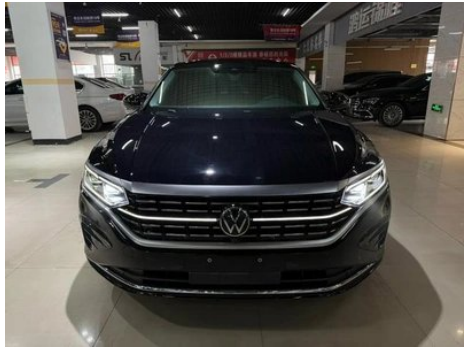
Vehicle Detail Report

Volkswagen Passat 2023 330TSI Luxury Edition

Basic Information

Brand	Volkswagen
Mileage	40,000 km
Color	Black
First Registration	2023-05-01
Transfer Count	1

Vehicle Images





Vehicle Condition

1. Driver's seat rails and frame, Signs of removal. 2. Front passenger seat rails and frame, Signs of removal.

Configuration Information

Model Information

Model Name	Volkswagen Passat 2023 330TSI Luxury Edition
Launch Date	2022.09

Basic parameters

Vehicle Class	Mid-size car
Energy Type	Gasoline
Maximum Power (kW)	137
Maximum Torque (N·m)	320
Transmission	7-speed wet dual-clutch
Body Type	Sedan
Engine	2.0T 186 horsepower L4
Dimensions (L×W×H) (mm)	4948*1836*1469
Official 0-100 km/h Acceleration (s)	8.4
Top Speed (km/h)	210
Curb Weight (kg)	1600
Maximum Gross Weight (kg)	2060
NEDC Combined Fuel Consumption (L/100km)	6.3
WLTP Combined Fuel Consumption (L/100km)	6.41

engine

Engine Model	EA888-DPL
Displacement (mL)	1984
Displacement (L)	2.0

engine (continued)

Induction Type	Turbocharging
Cylinder Arrangement	L
Number of Cylinders	4
Valves per Cylinder	4
Valve Train	DOHC
Maximum Power (PS)	186
Max Power Speed (rpm)	4100-6000
Max Torque Speed (rpm)	1500-4000
Maximum net power (kW)	137
Fuel Grade	95.
Fuel Delivery System	Mixed injection
Cylinder Head Material	Aluminum alloy
Cylinder Block Material	Cast iron
Engine layout	Horizontal

Screen/System

Central control color screen	<ul style="list-style-type: none">• Touch LCD screen
Infotainment Screen Size	<ul style="list-style-type: none">•9.2 inches
Bluetooth/In-car Phone	<ul style="list-style-type: none">•
Smartphone Integration/ Mirroring	<ul style="list-style-type: none">• Apple CarPlay support;• Baidu CarLife support;• OEM smartphone integration/mirroring
Voice recognition control system	<ul style="list-style-type: none">• Multimedia system;• Navigation;• Telephone
In-vehicle intelligent system	<ul style="list-style-type: none">• MOS Smart Car

Body

Length (mm)	4948
Width (mm)	1836
Height (mm)	1469
Wheelbase (mm)	2871
Front Track (mm)	1584
Rear Track (mm)	1570
Door Opening Type	swing door
Number of Doors	4
Number of Seats	5

Body (continued)

Fuel Tank Capacity (L)	68.5
Trunk volume (L)	521
Drag Coefficient (Cd)	-
Approach Angle (°)	14
Departure Angle (°)	14

Gearbox

Abbreviation	7-speed wet dual-clutch
Number of Gears	7
Transmission Type	Wet Dual-Clutch Transmission (DCT)

Chassis steering

Drive Type	Front-engine, Front-wheel drive (FF)
Front Suspension Type	MacPherson independent suspension
Rear Suspension Type	Multi-link independent suspension
Power Steering Type	Electric power assistance
Vehicle structure	bearing type

Seat Configuration

Seat Material	<ul style="list-style-type: none">• Leather
Main seat adjustment	<ul style="list-style-type: none">• Front and rear adjustment;• Backrest adjustment;• Height adjustment (4-way);• Lumbar support (4-way)
Co-seat adjustment method	<ul style="list-style-type: none">• Front and rear adjustment;• Backrest adjustment;• Height adjustment (2-way);• Lumbar support (4-way)
Electric adjustment of driver's seat and passenger seat	Main •/Deputy •
Front seat functions	<ul style="list-style-type: none">• Heating;• Ventilation
Electric seat memory function	<ul style="list-style-type: none">• Driving position
Front passenger seat rear adjustable buttons	<ul style="list-style-type: none">•
Rear seat folding	<ul style="list-style-type: none">• Proportional down
Front/rear center armrest	Front •/Rear •
Rear cup holder	<ul style="list-style-type: none">•

Active safety

Active safety (continued)

Anti-lock Braking System (ABS)	•
Electronic Brakeforce Distribution (EBD/CBC)	•
Brake Assist System (EBA/BAS/BA)	•
Traction Control System (ASR/TCS/TRC)	•
Electronic Stability Control (ESC/ESP/DSC)	•
Tire Pressure Monitoring System (TPMS)	• Tire pressure alarm
Seat Belt Reminder	• Front row
ISOFIX Child Seat Anchors	•
Lane Departure Warning System (LDWS)	•
Autonomous Emergency Braking (AEB)	•
Driver Fatigue Detection	-
Forward Collision Warning (FCW)	•

Air conditioning/refrigerator

Air conditioning temperature control method	• Automatic air conditioning
Rear Independent Climate Control	•
Rear seat air vents	•
Temperature zone control	•
Car air purifier	•
In-cabin PM2.5 Filter	•

Passive safety

Driver/passenger airbag	Main •/Deputy •
Front/rear side airbags	Front •/Rear-
Front/rear head airbags (curtain airbags)	Front •/Rear •

Wheel brake

Front Brake Type	Ventilation disc
Rear Brake Type	Disc

Wheel brake (continued)

Parking brake type	Electronic Parking
Front Tire Size	235/45 R18
Rear Tire Size	235/45 R18
Spare Tire Size	Not full-size

Audio/Interior Lighting

Speaker Brand Name	<input type="radio"/> Harman/Kardon Harman Kardon
Number of speakers	<ul style="list-style-type: none">• 8 horns; <input type="radio"/> 12 horns
Interior ambient lighting	<ul style="list-style-type: none">• 10 colors
Touch reading light	<ul style="list-style-type: none">•

Driving functions

Navigation traffic information display	<ul style="list-style-type: none">•
Lane assist	<input type="radio"/>
Lane Keeping Assist System	<ul style="list-style-type: none">•
Cruise control system	<ul style="list-style-type: none">• Full speed adaptive cruise
Satellite navigation system	<ul style="list-style-type: none">•
Driving assistance level	<ul style="list-style-type: none">•L2
Rear Cross Traffic Alert	<input type="radio"/>
Driver assistance systems	<ul style="list-style-type: none">•Travel Assist
Parking Assist	<ul style="list-style-type: none">•

Exterior lighting

Low beam light source	<ul style="list-style-type: none">•LED
High beam light source	<ul style="list-style-type: none">•LED
LED daytime running lights	<ul style="list-style-type: none">•
Adaptive high and low beam	<ul style="list-style-type: none">•
Automatic headlights	<ul style="list-style-type: none">•
Height-adjustable headlights	<ul style="list-style-type: none">•
Headlight Delay Off	<ul style="list-style-type: none">•
Lighting features	<ul style="list-style-type: none">• Matrix
Turn headlights	<ul style="list-style-type: none">•
Headlight rain and fog mode	<ul style="list-style-type: none">•

Exterior mirrors

Exterior mirror function	<ul style="list-style-type: none">•Electric adjustment;•Electric folding;•Rearview mirror memory;•Rearview mirror heating;•Automatically turn down when reversing;•Automatically fold when locking the car
---------------------------------	---

Appearance/anti-theft

Rim material	<ul style="list-style-type: none">• Aluminum alloy
Electric trunk	<ul style="list-style-type: none">•
Electronic engine immobilizer	<ul style="list-style-type: none">•
Central locking system in the car	<ul style="list-style-type: none">•
Key Type	<ul style="list-style-type: none">• Remote key
Keyless start system	<ul style="list-style-type: none">•
Keyless entry function	<ul style="list-style-type: none">• Front row
Hands-free Trunk	<ul style="list-style-type: none">•

Skylight/Glass

Sunroof Type	<ul style="list-style-type: none">• Openable panoramic sunroof
Front/rear electric windows	Front •/Rear •
One-touch window lifting function	<ul style="list-style-type: none">• Full vehicle
Window anti-pinch function	<ul style="list-style-type: none">•
Car makeup mirror	<ul style="list-style-type: none">• Main driver's lamp;• co-pilot's lamp
Rear wiper	-
Rain sensor wiper function	<ul style="list-style-type: none">• Rainfall-sensing
Rear side window sunshades	<ul style="list-style-type: none">• Manual

Interior and exterior color

Exterior Color	Black:#000000; Glacier blue:#73869D; Amber gold:#8A7C69; Crystal diamond silver:#B1AFA8; Elegant white:#FCFFFF
Interior Color	Obsidian Black:#000000; Black/Amber Brown:#000000/#9E763D

Steering wheel/interior mirror

Steering wheel/interior mirror (continued)

Steering Wheel Material	• Leather
Steering wheel position adjustment	• Manual up and down front and rear adjustment
Multi-function steering wheel	•
Heated Steering Wheel	-
Steering wheel memory	-
Trip computer display screen	• Color
Full LCD instrument panel	•
LCD instrument size	• 10.2 inches
Interior rearview mirror function	• Automatic anti-glare
Gear shifting	• Mechanical gear shift
HUD Head Up Digital Display	○

Intelligent configuration

Connected Car Services	•
OTA Updates	-
4G/5G Network	•4G
Wi-Fi hotspots	•

Driving Control

Driving mode switch	• Movement
Automatic parking	•
Hill start assist	•
Energy recovery system	•
Engine start-stop technology	•

Driving Hardware

Front/rear parking radar	Front •/Rear •
Driving Assistance Camera System	• 360-degree panoramic image

In-car charging

Multimedia/charging port	•USB;•Type-C
Number of USB/Type-C ports	• 2 in the front row/2 in the back row
Mobile phone wireless charging function	• Front row

Optional Package

Optional Package	Non-electric opening of the rear compartment lid (USD 0.15; including: manual opening of the rear compartment lid, no induction opening function (price -USD 294))
-------------------------	--

"●" = Standard equipment

"-" = Not available

"○" = Optional equipment.

Note: These are Chinese market vehicles. Warranty coverage is not available outside of China.