

Vehicle Detail Report

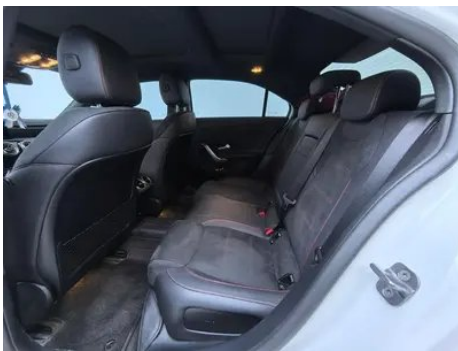
Mercedes-Benz A-Class 2024 A 200 L Dynamic version

Basic Information

Brand	Mercedes-Benz
Mileage	10,000 km
Color	White
First Registration	2024-11-01
Transfer Count	1

Vehicle Images





Vehicle Condition

1. Original metal body panels with factory paint.

Configuration Information

Model Information

Model Name	Mercedes-Benz A-Class 2024 A 200 L Dynamic
-------------------	--

Model Information (continued)

Launch Date	2023.12
Basic parameters	
Vehicle Class	compact car
Energy Type	Gasoline
Maximum Power (kW)	120
Maximum Torque (N·m)	270
Transmission	7-speed wet dual-clutch
Body Type	Sedan
Engine	1.3T 163 horsepower L4
Dimensions (L×W×H) (mm)	4630*1796*1459
Official 0-100 km/h Acceleration (s)	8.9
Top Speed (km/h)	230
Curb Weight (kg)	1433
Maximum Gross Weight (kg)	1910
WLTP Combined Fuel Consumption (L/100km)	6.06

engine

Engine Model	282 814
Displacement (mL)	1332
Displacement (L)	1.3
Induction Type	Turbocharging
Cylinder Arrangement	L
Number of Cylinders	4
Valves per Cylinder	4
Valve Train	DOHC
Maximum Power (PS)	163
Max Power Speed (rpm)	5500
Max Torque Speed (rpm)	2000-3500
Maximum net power (kW)	120
Fuel Grade	95.
Fuel Delivery System	Direct injection
Cylinder Head Material	Aluminum alloy

engine (continued)

Cylinder Block Material	Aluminum alloy
Engine layout	Horizontal

Screen/System

Central control color screen	<ul style="list-style-type: none">• Touch LCD screen
Infotainment Screen Size	<ul style="list-style-type: none">• 10.25 inches
Bluetooth/In-car Phone	<ul style="list-style-type: none">•
Smartphone Integration/Mirroring	<ul style="list-style-type: none">• Apple CarPlay support
Voice recognition control system	<ul style="list-style-type: none">• Multimedia system;• Navigation;• Telephone;• Air conditioning;• Sunroof
In-vehicle intelligent system	<ul style="list-style-type: none">• MBUX
Voice assistant wake-up word	<ul style="list-style-type: none">• Hello, Mercedes
Continuous speech recognition	<ul style="list-style-type: none">•

Body

Length (mm)	4630
Width (mm)	1796
Height (mm)	1459
Wheelbase (mm)	2789
Front Track (mm)	1569
Rear Track (mm)	1558
Door Opening Type	swing door
Number of Doors	4
Number of Seats	5
Trunk volume (L)	-
Drag Coefficient (Cd)	-
Approach Angle (°)	14
Departure Angle (°)	22

Gearbox

Abbreviation	7-speed wet dual-clutch
Number of Gears	7
Transmission Type	Wet Dual-Clutch Transmission (DCT)

Chassis steering

Chassis steering (continued)

Drive Type	Front-engine, Front-wheel drive (FF)
Front Suspension Type	MacPherson independent suspension
Rear Suspension Type	Torsion beam non-independent suspension
Power Steering Type	Electric power assistance
Vehicle structure	bearing type

Seat Configuration

Seat Material	<ul style="list-style-type: none">• Imitation leather
Main seat adjustment	<ul style="list-style-type: none">• Front and rear adjustment;• Backrest adjustment;• Height adjustment (4-way);• Leg support adjustment
Co-seat adjustment method	<ul style="list-style-type: none">• Front and rear adjustment;• Backrest adjustment;• Height adjustment (4-way)
Electric adjustment of driver's seat and passenger seat	-
Front passenger seat rear adjustable buttons	-
Front/rear center armrest	Front •/Rear •
Rear cup holder	<ul style="list-style-type: none">•

Active safety

Anti-lock Braking System (ABS)	<ul style="list-style-type: none">•
Electronic Brakeforce Distribution (EBD/CBC)	<ul style="list-style-type: none">•
Brake Assist System (EBA/BAS/BA)	<ul style="list-style-type: none">•
Traction Control System (ASR/TCS/TRC)	<ul style="list-style-type: none">•
Electronic Stability Control (ESC/ESP/DSC)	<ul style="list-style-type: none">•
Tire Pressure Monitoring System (TPMS)	<ul style="list-style-type: none">• Tire pressure display
Seat Belt Reminder	<ul style="list-style-type: none">• Full vehicle
ISOFIX Child Seat Anchors	<ul style="list-style-type: none">•
Lane Departure Warning System (LDWS)	<ul style="list-style-type: none">•

Active safety (continued)

Autonomous Emergency Braking (AEB)	•
Driver Fatigue Detection	-
Forward Collision Warning (FCW)	•
Emergency Call System (eCall)	•

Air conditioning/refrigerator

Air conditioning temperature control method	• Automatic air conditioning
Rear Independent Climate Control	-
Rear seat air vents	•
Temperature zone control	-
Car air purifier	-
In-cabin PM2.5 Filter	-

Passive safety

Driver/passenger airbag	Main •/Deputy •
Front/rear side airbags	Front •/Rear •
Front/rear head airbags (curtain airbags)	Front •/Rear •
Passive pedestrian protection	•

Wheel brake

Front Brake Type	Ventilation disc
Rear Brake Type	Disc
Parking brake type	Electronic Parking
Front Tire Size	205/55 R17
Rear Tire Size	205/55 R17
Spare Tire Size	None

Audio/Interior Lighting

Number of speakers	• 7 speakers
---------------------------	--------------

Driving functions

Navigation traffic information display	•
Lane assist	-

Driving functions (continued)

Lane Keeping Assist System	<ul style="list-style-type: none">•
Cruise control system	<ul style="list-style-type: none">• Full speed adaptive cruise
Satellite navigation system	<ul style="list-style-type: none">•
Driving assistance level	<ul style="list-style-type: none">• L2
Map Brand	<ul style="list-style-type: none">• Gaud
Parking Assist	<ul style="list-style-type: none">•

Exterior lighting

Low beam light source	<ul style="list-style-type: none">• LED
High beam light source	<ul style="list-style-type: none">• LED
LED daytime running lights	<ul style="list-style-type: none">•
Adaptive high and low beam	<ul style="list-style-type: none">•
Automatic headlights	<ul style="list-style-type: none">•
Height-adjustable headlights	<ul style="list-style-type: none">•
Headlight Delay Off	<ul style="list-style-type: none">•

Exterior mirrors

Exterior mirror function	<ul style="list-style-type: none">• Electric adjustment;• Electric folding;• Rearview mirror heating;• Automatic folding when locked
---------------------------------	---

Appearance/anti-theft

Rim material	<ul style="list-style-type: none">• Aluminum alloy
Electronic engine immobilizer	<ul style="list-style-type: none">•
Central locking system in the car	<ul style="list-style-type: none">•
Key Type	<ul style="list-style-type: none">• Remote key
Keyless start system	<ul style="list-style-type: none">•
Appearance Kit	<ul style="list-style-type: none">• Sports style

Skylight/Glass

Sunroof Type	<ul style="list-style-type: none">• Sectional electric sunroof
Front/rear electric windows	Front • /Rear •
One-touch window lifting function	<ul style="list-style-type: none">• Full vehicle

Skylight/Glass (continued)

Window anti-pinch function	<ul style="list-style-type: none">•
Car makeup mirror	<ul style="list-style-type: none">• Main driver's lamp; • co-pilot's lamp
Rear wiper	-
Rain sensor wiper function	<ul style="list-style-type: none">• Rainfall-sensing

Interior and exterior color

Exterior Color	Arctic White #F4F4F4 Spacetime Silver #ACACAE Gui Li Gold #A1725C sea night blue #143882 Lava Red #B52E39 mountain gray #2F302A Cosmic Black #13120E
Interior Color	Black:#000000; Black/Sage Grey:#000000/#9BA5A7

Steering wheel/interior mirror

Steering Wheel Material	<ul style="list-style-type: none">• Cortex
Steering wheel position adjustment	<ul style="list-style-type: none">• Manual up and down front and rear adjustment
Multi-function steering wheel	<ul style="list-style-type: none">•
Heated Steering Wheel	-
Steering wheel memory	-
Trip computer display screen	<ul style="list-style-type: none">• Color
Full LCD instrument panel	<ul style="list-style-type: none">•
LCD instrument size	<ul style="list-style-type: none">• 10.25 inches
Interior rearview mirror function	<ul style="list-style-type: none">• Manual anti-glare
Gear shifting	<ul style="list-style-type: none">• Electronic gear shift
ETC Device	○(USD 441)
Steering Wheel Shift Paddles	<ul style="list-style-type: none">•

Intelligent configuration

Connected Car Services	<ul style="list-style-type: none">•
OTA Updates	<ul style="list-style-type: none">•
4G/5G Network	<ul style="list-style-type: none">•4G
Mobile APP remote function	<ul style="list-style-type: none">• Door control; • Vehicle status check/diagnostics; • Vehicle location / find my car

Intelligent configuration (continued)

Wi-Fi hotspots	•
-----------------------	---

Driving Control

Driving mode switch	• Sport; • Economy; • Standard/Comfort
Automatic parking	•
Hill start assist	•
Engine start-stop technology	•

Driving Hardware

Front/rear parking radar	Front •/Rear •
Driving Assistance Camera System	• Reversing image
Front perception camera	• Monocular
Number of cameras	• 2
Number of ultrasonic radars	• 12

In-car charging

Multimedia/charging port	•Type-C
Number of USB/Type-C ports	• 2 in the First row/1 in the 2nd-row

"●" = Standard equipment

"_" = Not available

"○" = Optional equipment.

Note: These are Chinese market vehicles. Warranty coverage is not available outside of China.