

# Vehicle Detail Report

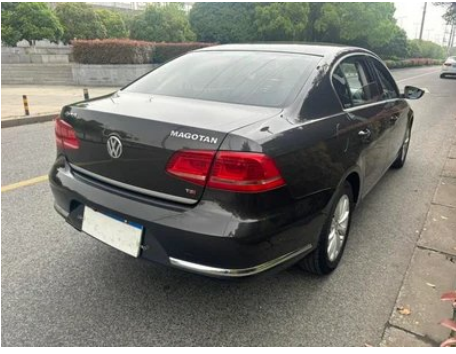
## Magotan 2013 1.8TSI Leading Type

### Basic Information

Brand	Volkswagen
Mileage	126,000 km
Color	Dark gray
First Registration	2013-12-01
Transfer Count	0

### Vehicle Images







## Vehicle Condition

1. Inside of right B- pillar, Deformation (Not caused by an accident). 2. Spare tire compartment (Luggage bottom plate), Mud and sand, Water mark, Dirtiness (Not caused by an accident). 3. Interior roof, shedding, Dirtiness (Not caused by submersion). 4. Left rear fender, Paint spray repair, Sheet metal repair. 5. Right rear fender, Scratch, Deformation. 6. Interior roof, shedding, Dirtiness.

## Configuration Information

### Model Information

<b>Model Name</b>	Magotan 2013 1.8TSI Leading Type
<b>Launch Date</b>	2013.06

### Basic parameters

<b>Vehicle Class</b>	medium-sized car
<b>Energy Type</b>	Gasoline
<b>Maximum Power (kW)</b>	118
<b>Maximum Torque (N·m)</b>	250
<b>Transmission</b>	7-speed dry dual-clutch
<b>Body Type</b>	Sedan
<b>Engine</b>	1.8L 160 hp L4
<b>Dimensions (L×W×H) (mm)</b>	4865*1820*1475
<b>Official 0-100 km/h Acceleration (s)</b>	-
<b>Top Speed (km/h)</b>	215
<b>Curb Weight (kg)</b>	1545
<b>Maximum Gross Weight (kg)</b>	-

### engine

<b>Engine Model</b>	-
<b>Displacement (mL)</b>	1798
<b>Displacement (L)</b>	1.8
<b>Induction Type</b>	Turbocharging
<b>Cylinder Arrangement</b>	L

## engine (continued)

<b>Number of Cylinders</b>	4
<b>Valves per Cylinder</b>	4
<b>Compression Ratio</b>	9.6
<b>Valve Train</b>	DOHC
<b>Bore (mm)</b>	82.5
<b>Stroke (mm)</b>	84.1
<b>Maximum Power (PS)</b>	160
<b>Max Power Speed (rpm)</b>	5000-6200
<b>Max Torque Speed (rpm)</b>	1500-4500
<b>Maximum net power (kW)</b>	-
<b>Fuel Grade</b>	Number 95
<b>Fuel Delivery System</b>	Direct injection
<b>Cylinder Head Material</b>	Aluminum alloy
<b>Cylinder Block Material</b>	cast iron

## Screen/System

<b>Bluetooth/In-car Phone</b>	-
<b>In-car CD/DVD Player</b>	• Single disc CD

## Body

<b>Length (mm)</b>	4865
<b>Width (mm)</b>	1820
<b>Height (mm)</b>	1475
<b>Wheelbase (mm)</b>	2812
<b>Front Track (mm)</b>	-
<b>Rear Track (mm)</b>	-
<b>Door Opening Type</b>	-
<b>Number of Doors</b>	4
<b>Number of Seats</b>	5
<b>Fuel Tank Capacity (L)</b>	70
<b>Trunk volume (L)</b>	565
<b>Drag Coefficient (Cd)</b>	-

## Gearbox

<b>Abbreviation</b>	7-speed dry dual-clutch
<b>Number of Gears</b>	7
<b>Transmission Type</b>	Dry Dual-Clutch Transmission (DCT)

## Chassis steering

<b>Drive Type</b>	Front-engine, Front-wheel drive (FF)
<b>Front Suspension Type</b>	MacPherson strut independent suspension
<b>Rear Suspension Type</b>	Multi-link independent suspension
<b>Power Steering Type</b>	Electric power assist
<b>Vehicle structure</b>	bearing type

## Seat Configuration

<b>Seat Material</b>	• Leather
<b>Main seat adjustment</b>	• Front and rear adjustment; • Backrest adjustment; • Height adjustment (2 directions), • High and low adjustment (Four directions)
<b>Co-seat adjustment method</b>	• Front and rear adjustment; • Backrest adjustment
<b>Electric adjustment of driver's seat and passenger seat</b>	Main •/Sub •
<b>Front passenger seat rear adjustable buttons</b>	-
<b>Rear seat folding</b>	• Proportional down
<b>Front/rear center armrest</b>	Front •/Back •
<b>Rear cup holder</b>	•

## Active safety

<b>Anti-lock Braking System (ABS)</b>	•
<b>Electronic Brakeforce Distribution (EBD/CBC)</b>	•
<b>Brake Assist System (EBA/BAS/BA)</b>	•
<b>Traction Control System (ASR/TCS/TRC)</b>	•
<b>Electronic Stability Control (ESC/ESP/DSC)</b>	•
<b>Tire Pressure Monitoring System (TPMS)</b>	•
<b>Seat Belt Reminder</b>	•
<b>ISOFIX Child Seat Anchors</b>	•
<b>Lane Departure Warning System (LDWS)</b>	-

## Active safety (continued)

<b>Autonomous Emergency Braking (AEB)</b>	-
<b>Driver Fatigue Detection</b>	-

## Air conditioning/refrigerator

<b>Air conditioning temperature control method</b>	• Manual air conditioning
<b>Rear Independent Climate Control</b>	-
<b>Rear seat air vents</b>	•
<b>Temperature zone control</b>	-
<b>Car air purifier</b>	-
<b>In-cabin PM2.5 Filter</b>	-

## Passive safety

<b>Driver/passenger airbag</b>	Main •/Sub •
<b>Front/rear side airbags</b>	Front •/Rear
<b>Front/rear head airbags (curtain airbags)</b>	-

## Wheel brake

<b>Front Brake Type</b>	Ventilation, Disc-type
<b>Rear Brake Type</b>	Disc-type
<b>Parking brake type</b>	Electronic parking
<b>Front Tire Size</b>	215/55 R16
<b>Rear Tire Size</b>	215/55 R16
<b>Spare Tire Size</b>	Non-full size

## Audio/Interior Lighting

<b>Number of speakers</b>	• 8-9 speakers
---------------------------	----------------

## Driving functions

<b>Navigation traffic information display</b>	-
<b>Lane assist</b>	-
<b>Lane Keeping Assist System</b>	-
<b>Satellite navigation system</b>	-
<b>Parking Assist</b>	-

## Exterior lighting

## Exterior lighting (continued)

<b>LED daytime running lights</b>	-
<b>Adaptive high and low beam</b>	-
<b>Automatic headlights</b>	-
<b>Front fog lights</b>	•
<b>Height-adjustable headlights</b>	-
<b>Headlight Delay Off</b>	-

## Exterior mirrors

<b>Exterior mirror function</b>	• Electric adjustment, • Mirror heating
---------------------------------	---

## Appearance/anti-theft

<b>Rim material</b>	• Aluminum alloy
<b>Electric trunk</b>	-
<b>Electronic engine immobilizer</b>	•
<b>Central locking system in the car</b>	•
<b>Key Type</b>	• Remote key
<b>Keyless start system</b>	-

## Skylight/Glass

<b>Sunroof Type</b>	• Electric sunroof
<b>Front/rear electric windows</b>	Front •/Back •
<b>Window anti-pinch function</b>	•
<b>Car makeup mirror</b>	•
<b>Rear wiper</b>	-

## Interior and exterior color

<b>Exterior Color</b>	Phantom Black:#000000; Elegant White:#FFFFFF; Mocha Brown:#201818; Basalt Grey:#5F7878; Cairo Gold:#93705D; Crystal Silver:#ABB0B3
<b>Interior Color</b>	Black, #252B2A, Black, Beige:#252B2A/#EEDED1, Coffee color, # 504B4A; Beige:#C8B2A8

## Steering wheel/interior mirror

## Steering wheel/interior mirror (continued)

<b>Steering Wheel Material</b>	• Cortex
<b>Steering wheel position adjustment</b>	• Manual up and down front and rear adjustment
<b>Multi-function steering wheel</b>	•
<b>Heated Steering Wheel</b>	-
<b>Steering wheel memory</b>	-
<b>Trip computer display screen</b>	•
<b>Full LCD instrument panel</b>	-
<b>Interior rearview mirror function</b>	• Manual anti-glare

## Intelligent configuration

<b>Connected Car Services</b>	-
<b>OTA Updates</b>	-

## Driving Control

<b>Automatic parking</b>	•
<b>Hill start assist</b>	•

## Driving Hardware

<b>Front/rear parking radar</b>	Front •/Back •
---------------------------------	----------------

---

"●" = Standard equipment

"-" = Not available

"○" = Optional equipment.

Note: These are Chinese market vehicles. Warranty coverage is not available outside of China.