

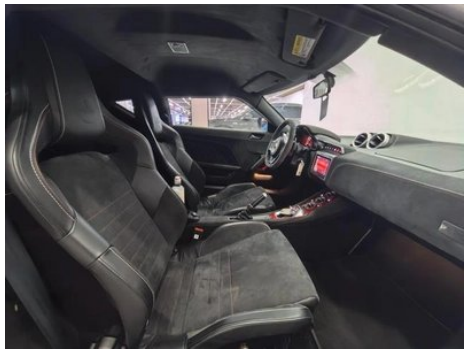
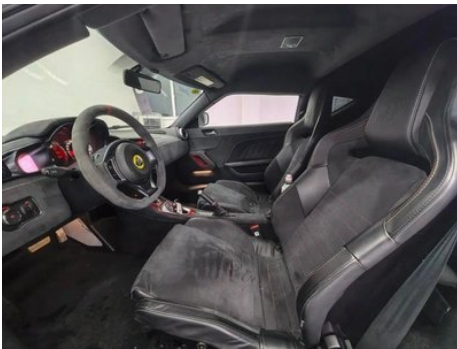
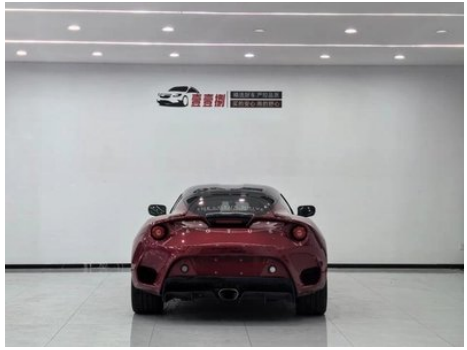
# Vehicle Detail Report

## Evora 2019 GT410

### Basic Information

Brand	Lotus
Mileage	6,100 km
Color	Red
First Registration	2022-01-01
Transfer Count	0

### Vehicle Images





## Vehicle Condition

1. Spare wheel well, Cracking. 2. Driver seat rails and frame, Signs of disassembly. 3. Passenger seat rails and frame, Signs of disassembly.

## Configuration Information

### Model Information

<b>Model Name</b>	Evora 2019 GT410 Sport
<b>Launch Date</b>	2019.04

### Basic parameters

<b>Vehicle Class</b>	Sports car
<b>Energy Type</b>	Gasoline
<b>Maximum Power (kW)</b>	298
<b>Maximum Torque (N·m)</b>	410
<b>Transmission</b>	6-speed manual integration
<b>Body Type</b>	Hardtop Sports Car
<b>Engine</b>	3.5T 405 horsepower V6
<b>Dimensions (L×W×H) (mm)</b>	4385*1845*1240
<b>Official 0-100 km/h Acceleration (s)</b>	4.2
<b>Top Speed (km/h)</b>	280
<b>Curb Weight (kg)</b>	1368
<b>Maximum Gross Weight (kg)</b>	-
<b>NEDC Combined Fuel Consumption (L/100km)</b>	10.5

### engine

<b>Engine Model</b>	2GR-FZE
<b>Displacement (mL)</b>	3456
<b>Displacement (L)</b>	3.5
<b>Induction Type</b>	Mechanical Pressurization
<b>Cylinder Arrangement</b>	V

## engine (continued)

<b>Number of Cylinders</b>	6
<b>Valves per Cylinder</b>	4
<b>Valve Train</b>	DOHC
<b>Maximum Power (PS)</b>	405
<b>Max Power Speed (rpm)</b>	7000
<b>Max Torque Speed (rpm)</b>	2250-7000
<b>Maximum net power (kW)</b>	-
<b>Fuel Grade</b>	95.
<b>Fuel Delivery System</b>	Multi-point EFI
<b>Cylinder Head Material</b>	Aluminum alloy
<b>Cylinder Block Material</b>	Aluminum alloy
<b>Engine layout</b>	Horizontal

## Screen/System

<b>Central control color screen</b>	<ul style="list-style-type: none"><li>• Touch LCD screen</li></ul>
<b>Infotainment Screen Size</b>	<ul style="list-style-type: none"><li>• 7 inches</li></ul>
<b>Bluetooth/In-car Phone</b>	<ul style="list-style-type: none"><li>•</li></ul>
<b>Smartphone Integration/Mirroring</b>	<ul style="list-style-type: none"><li>• Support CarPlay;</li><li>• Support Android Auto</li></ul>

## Body

<b>Length (mm)</b>	4385
<b>Width (mm)</b>	1845
<b>Height (mm)</b>	1240
<b>Wheelbase (mm)</b>	2575
<b>Front Track (mm)</b>	1564
<b>Rear Track (mm)</b>	1575
<b>Door Opening Type</b>	-
<b>Number of Doors</b>	2
<b>Number of Seats</b>	2
<b>Trunk volume (L)</b>	-
<b>Drag Coefficient (Cd)</b>	-

## Gearbox

<b>Abbreviation</b>	6-speed manual integration
<b>Number of Gears</b>	6

## Gearbox (continued)

<b>Transmission Type</b>	Automatic Transmission with Manual Mode (AT)
--------------------------	--

## Chassis steering

<b>Drive Type</b>	Mid-engine, Rear-wheel drive (MR)
<b>Front Suspension Type</b>	Double wishbone independent suspension
<b>Rear Suspension Type</b>	Double wishbone independent suspension
<b>Power Steering Type</b>	Mechanical hydraulic power steering
<b>Vehicle structure</b>	bearing type

## Seat Configuration

<b>Seat Material</b>	<ul style="list-style-type: none"><li>• Leather; ○ Leather/Alcantara mix and match</li></ul>
<b>Main seat adjustment</b>	<ul style="list-style-type: none"><li>• Front and rear adjustment; • Backrest adjustment</li></ul>
<b>Co-seat adjustment method</b>	<ul style="list-style-type: none"><li>• Front and rear adjustment; • Backrest adjustment</li></ul>
<b>Electric adjustment of driver's seat and passenger seat</b>	-
<b>Front seat functions</b>	○ Heating
<b>Front passenger seat rear adjustable buttons</b>	-
<b>Front/rear center armrest</b>	-
<b>Rear cup holder</b>	-
<b>Sports style seats</b>	<ul style="list-style-type: none"><li>•</li></ul>

## Active safety

<b>Anti-lock Braking System (ABS)</b>	<ul style="list-style-type: none"><li>•</li></ul>
<b>Electronic Brakeforce Distribution (EBD/CBC)</b>	<ul style="list-style-type: none"><li>•</li></ul>
<b>Brake Assist System (EBA/BAS/BA)</b>	<ul style="list-style-type: none"><li>•</li></ul>
<b>Traction Control System (ASR/TCS/TRC)</b>	<ul style="list-style-type: none"><li>•</li></ul>
<b>Electronic Stability Control (ESC/ESP/DSC)</b>	<ul style="list-style-type: none"><li>•</li></ul>
<b>Tire Pressure Monitoring System (TPMS)</b>	<ul style="list-style-type: none"><li>• Tire pressure display</li></ul>
<b>Seat Belt Reminder</b>	<ul style="list-style-type: none"><li>• Front row</li></ul>

## Active safety (continued)

<b>ISOFIX Child Seat Anchors</b>	-
<b>Lane Departure Warning System (LDWS)</b>	-
<b>Autonomous Emergency Braking (AEB)</b>	-
<b>Driver Fatigue Detection</b>	-

## Air conditioning/refrigerator

<b>Air conditioning temperature control method</b>	<ul style="list-style-type: none"><li>• Manual air conditioning</li></ul>
<b>Rear Independent Climate Control</b>	-
<b>Rear seat air vents</b>	-
<b>Temperature zone control</b>	-
<b>Car air purifier</b>	-
<b>In-cabin PM2.5 Filter</b>	-

## Passive safety

<b>Driver/passenger airbag</b>	Main •/Deputy •
<b>Front/rear side airbags</b>	-
<b>Front/rear head airbags (curtain airbags)</b>	-

## Wheel brake

<b>Front Brake Type</b>	Ventilation disc
<b>Rear Brake Type</b>	Ventilation disc
<b>Parking brake type</b>	handbrake
<b>Front Tire Size</b>	235/35 R19
<b>Rear Tire Size</b>	285/30 R20
<b>Spare Tire Size</b>	None

## Driving functions

<b>Navigation traffic information display</b>	-
<b>Lane assist</b>	-
<b>Lane Keeping Assist System</b>	-
<b>Cruise control system</b>	<ul style="list-style-type: none"><li>• Cruise control</li></ul>
<b>Satellite navigation system</b>	<ul style="list-style-type: none"><li>•</li></ul>
<b>Parking Assist</b>	-

## Exterior lighting

<b>Low beam light source</b>	• Xenon
<b>High beam light source</b>	• Xenon
<b>LED daytime running lights</b>	•
<b>Adaptive high and low beam</b>	-
<b>Automatic headlights</b>	-
<b>Height-adjustable headlights</b>	•
<b>Headlight Delay Off</b>	-

## Exterior mirrors

<b>Exterior mirror function</b>	• Electric adjustment; • Electric folding; • Automatic folding
---------------------------------	--

## Appearance/anti-theft

<b>Rim material</b>	• Aluminum alloy
<b>Electric trunk</b>	-
<b>Electronic engine immobilizer</b>	•
<b>Central locking system in the car</b>	•
<b>Key Type</b>	• Remote key
<b>Keyless start system</b>	-
<b>Appearance Kit</b>	• Sports style
<b>Frameless door design</b>	•

## Skylight/Glass

<b>Front/rear electric windows</b>	Front •/Rear-
<b>One-touch window lifting function</b>	• Front row
<b>Window anti-pinch function</b>	•
<b>Rear wiper</b>	-

## Interior and exterior color

## Interior and exterior color (continued)

<b>Exterior Color</b>	Mars Orange:#FF8C01; Heather Blue:#0F69C3; Hot Red:#AC232B; Track Green:#254F29; Yang Linbai:#FAFAFA; Quiet, Black:#000000, Cobain Grey:#AAAAAA; Streamed Silver:#969696, Graphite, Grey:#7D7970; Sunshine Yellow:#FDC702; Night Sky Blue:#142378
<b>Interior Color</b>	Black:#000000

## Steering wheel/interior mirror

<b>Steering Wheel Material</b>	• Genuine leather; ○ Alcantara/suede
<b>Steering wheel position adjustment</b>	• Manual up and down front and rear adjustment
<b>Multi-function steering wheel</b>	•
<b>Heated Steering Wheel</b>	-
<b>Steering wheel memory</b>	-
<b>Trip computer display screen</b>	• Monochrome
<b>Full LCD instrument panel</b>	-
<b>Interior rearview mirror function</b>	• Manual anti-glare
<b>Steering Wheel Shift Paddles</b>	•

## Intelligent configuration

<b>Connected Car Services</b>	-
<b>OTA Updates</b>	-

## Driving Control

<b>Driving mode switch</b>	• Movement
<b>Automatic parking</b>	-
<b>Hill start assist</b>	•

## Driving Hardware

<b>Front/rear parking radar</b>	Front-/Rear •
<b>Driving Assistance Camera System</b>	• Reversing image

## In-car charging

<b>Multimedia/charging port</b>	•USB;•AUX
---------------------------------	-----------

## In-car charging (continued)

<b>Number of USB/Type-C ports</b>	• 1 in the front row
-----------------------------------	----------------------

---

"●" = Standard equipment

"\_" = Not available

"○" = Optional equipment.

Note: These are Chinese market vehicles. Warranty coverage is not available outside of China.