

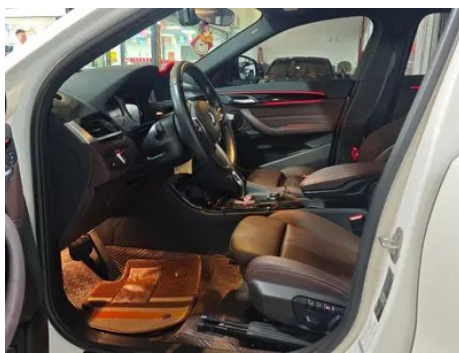
# Vehicle Detail Report

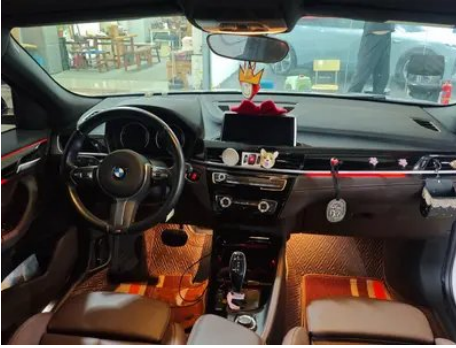
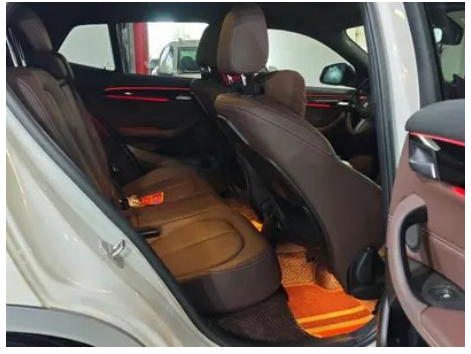
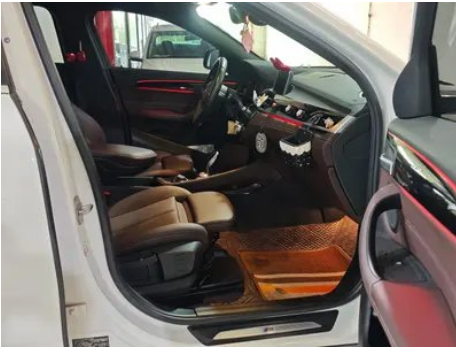
## BMW X2 2020 sDrive25i Leading Type M Off-road suit

### Basic Information

Brand	BMW
Mileage	57,000 km
Color	White
First Registration	2020-05-01
Transfer Count	1

### Vehicle Images





## Vehicle Condition

1. Right upper side rail, Paint repair. 2. Inner side of right C-pillar, Paint repair. 3. Driver's seat rails and frame, Signs of removal. 4. Front passenger seat rails and frame, Signs of removal. 5. Right rear quarter panel, Paint repair, Body panel repair.

## Configuration Information

### Model Information

<b>Model Name</b>	BMW X2 2020 sDrive25i Leading Type M Off-road suit
<b>Launch Date</b>	2019.10

### Basic parameters

<b>Vehicle Class</b>	Compact SUV
<b>Energy Type</b>	Gasoline
<b>Maximum Power (kW)</b>	141
<b>Maximum Torque (N·m)</b>	280
<b>Transmission</b>	7-speed wet dual-clutch
<b>Body Type</b>	SUV
<b>Engine</b>	2.0L 192 hp L4
<b>Dimensions (L×W×H) (mm)</b>	4379*1824*1555

## Basic parameters (continued)

<b>Official 0-100 km/h Acceleration (s)</b>	7.7
<b>Top Speed (km/h)</b>	227
<b>Curb Weight (kg)</b>	1561
<b>Maximum Gross Weight (kg)</b>	-
<b>NEDC Combined Fuel Consumption (L/100km)</b>	6.1

## engine

<b>Engine Model</b>	B48A20C
<b>Displacement (mL)</b>	1998
<b>Displacement (L)</b>	2.0
<b>Induction Type</b>	Turbocharging
<b>Cylinder Arrangement</b>	L
<b>Number of Cylinders</b>	4
<b>Valves per Cylinder</b>	4
<b>Valve Train</b>	DOHC
<b>Maximum Power (PS)</b>	192
<b>Max Power Speed (rpm)</b>	5000-6000
<b>Max Torque Speed (rpm)</b>	1350-4600
<b>Maximum net power (kW)</b>	141
<b>Fuel Grade</b>	95.
<b>Fuel Delivery System</b>	Direct injection
<b>Cylinder Head Material</b>	Aluminum alloy
<b>Cylinder Block Material</b>	Aluminum alloy
<b>Engine layout</b>	Horizontal

## Screen/System

<b>Central control color screen</b>	• Touch LCD screen
<b>Infotainment Screen Size</b>	• 8.8 inches; ○ 10.25 inches
<b>Bluetooth/In-car Phone</b>	•
<b>Smartphone Integration/Mirroring</b>	○ Apple CarPlay support (USD 132)
<b>Voice recognition control system</b>	○ Multimedia system; ○ Navigation; • Telephone

## Body

## Body (continued)

<b>Length (mm)</b>	4379
<b>Width (mm)</b>	1824
<b>Height (mm)</b>	1555
<b>Wheelbase (mm)</b>	2670
<b>Front Track (mm)</b>	1565
<b>Rear Track (mm)</b>	1564
<b>Door Opening Type</b>	swing door
<b>Number of Doors</b>	5
<b>Number of Seats</b>	5
<b>Fuel Tank Capacity (L)</b>	61
<b>Trunk volume (L)</b>	-
<b>Drag Coefficient (Cd)</b>	-
<b>Approach Angle (°)</b>	16
<b>Departure Angle (°)</b>	24

## Gearbox

<b>Abbreviation</b>	7-speed wet dual-clutch
<b>Number of Gears</b>	7
<b>Transmission Type</b>	Wet Dual-Clutch Transmission (DCT)

## Chassis steering

<b>Drive Type</b>	Front-engine, Front-wheel drive (FF)
<b>Front Suspension Type</b>	MacPherson independent suspension
<b>Rear Suspension Type</b>	Multi-link independent suspension
<b>Power Steering Type</b>	Electric power assistance
<b>Vehicle structure</b>	bearing type

## Seat Configuration

<b>Seat Material</b>	• Imitation leather
<b>Main seat adjustment</b>	• Front and rear adjustment; • Backrest adjustment; • Height adjustment (4-way); • Leg support adjustment
<b>Co-seat adjustment method</b>	• Front and rear adjustment; • Backrest adjustment; • Height adjustment (4-way); • Leg support adjustment
<b>Electric adjustment of driver's seat and passenger seat</b>	Main •/Auxiliary ○ Driver's seat electric adjustment (USD 515)

## Seat Configuration (continued)

<b>Front seat functions</b>	○ Heating (USD 441)
<b>Electric seat memory function</b>	• Driving position
<b>Front passenger seat rear adjustable buttons</b>	-
<b>Second row seat adjustment</b>	• Backrest adjustment
<b>Rear seat folding</b>	• Proportional down
<b>Front/rear center armrest</b>	Front •/Rear •
<b>Rear cup holder</b>	•
<b>Sports style seats</b>	•

## Active safety

<b>Anti-lock Braking System (ABS)</b>	•
<b>Electronic Brakeforce Distribution (EBD/CBC)</b>	•
<b>Brake Assist System (EBA/BAS/BA)</b>	•
<b>Traction Control System (ASR/TCS/TRC)</b>	•
<b>Electronic Stability Control (ESC/ESP/DSC)</b>	•
<b>Tire Pressure Monitoring System (TPMS)</b>	• Tire pressure display
<b>Seat Belt Reminder</b>	• Full vehicle
<b>ISOFIX Child Seat Anchors</b>	•
<b>Lane Departure Warning System (LDWS)</b>	○
<b>Autonomous Emergency Braking (AEB)</b>	-
<b>Driver Fatigue Detection</b>	-
<b>Emergency Call System (eCall)</b>	•

## Air conditioning/refrigerator

<b>Air conditioning temperature control method</b>	• Automatic air conditioning
<b>Rear Independent Climate Control</b>	-
<b>Rear seat air vents</b>	•

## Air conditioning/refrigerator (continued)

Temperature zone control	•
Car air purifier	-
In-cabin PM2.5 Filter	-

## Passive safety

Driver/passenger airbag	Main •/Deputy •
Front/rear side airbags	Front •/Rear-
Front/rear head airbags (curtain airbags)	Front •/Rear •
Run-flat tires	•

## Wheel brake

Front Brake Type	Ventilation disc
Rear Brake Type	Ventilation disc
Parking brake type	Electronic Parking
Front Tire Size	225/50 R18
Rear Tire Size	225/50 R18
Spare Tire Size	None

## Audio/Interior Lighting

Speaker Brand Name	○Harman/Kardon (USD 882)
Number of speakers	• 7 horn; ○ 12 horn
Interior ambient lighting	• 6 colors

## Driving functions

Navigation traffic information display	○
Lane assist	-
Lane Keeping Assist System	-
Cruise control system	○Cruise Control (USD 368)
Satellite navigation system	○
Parking Assist	•

## Exterior lighting

Low beam light source	•LED
High beam light source	•LED
LED daytime running lights	•
Adaptive high and low beam	-

## Exterior lighting (continued)

<b>Automatic headlights</b>	<ul style="list-style-type: none"><li>•</li></ul>
<b>Height-adjustable headlights</b>	<ul style="list-style-type: none"><li>•</li></ul>
<b>Headlight Delay Off</b>	<ul style="list-style-type: none"><li>•</li></ul>

## Exterior mirrors

<b>Exterior mirror function</b>	<ul style="list-style-type: none"><li>•Electric adjustment;</li><li>•Electric folding;</li><li>•Rearview mirror memory;</li><li>•Rearview mirror heating;</li><li>•Automatically turn down when reversing;</li><li>•Automatically fold when locking the car</li></ul>
---------------------------------	---

## Appearance/anti-theft

<b>Rim material</b>	<ul style="list-style-type: none"><li>• Aluminum alloy</li></ul>
<b>Electric trunk</b>	<ul style="list-style-type: none"><li>•</li></ul>
<b>Electronic engine immobilizer</b>	<ul style="list-style-type: none"><li>•</li></ul>
<b>Central locking system in the car</b>	<ul style="list-style-type: none"><li>•</li></ul>
<b>Key Type</b>	<ul style="list-style-type: none"><li>• Remote key</li></ul>
<b>Keyless start system</b>	<ul style="list-style-type: none"><li>•</li></ul>
<b>Keyless entry function</b>	<ul style="list-style-type: none"><li>○ Front row (USD 515)</li></ul>
<b>Hands-free Trunk</b>	<ul style="list-style-type: none"><li>○</li></ul>
<b>Electric trunk position memory</b>	<ul style="list-style-type: none"><li>•</li></ul>

## Skylight/Glass

<b>Sunroof Type</b>	<ul style="list-style-type: none"><li>• Openable panoramic sunroof</li></ul>
<b>Front/rear electric windows</b>	Front <ul style="list-style-type: none"><li>•</li></ul> /Rear <ul style="list-style-type: none"><li>•</li></ul>
<b>One-touch window lifting function</b>	<ul style="list-style-type: none"><li>• Full vehicle</li></ul>
<b>Window anti-pinch function</b>	<ul style="list-style-type: none"><li>•</li></ul>
<b>Car makeup mirror</b>	<ul style="list-style-type: none"><li>• Main driver's lamp;</li><li>• co-pilot's lamp</li></ul>
<b>Rear wiper</b>	<ul style="list-style-type: none"><li>•</li></ul>
<b>Rain sensor wiper function</b>	<ul style="list-style-type: none"><li>• Rainfall-sensing</li></ul>

## Interior and exterior color

## Interior and exterior color (continued)

<b>Exterior Color</b>	Ore White #E7E7E7 Mediterranean blue #092A57 Sunset orange #DE4A29 sky blue #0078B5 whirlwind brown #573E35 obsidian gold #E8D161
<b>Interior Color</b>	Black/Lava Red:#000000/#AF3A21; Black:#000000; Black/Mocha:#000000/#423534

## Steering wheel/interior mirror

<b>Steering Wheel Material</b>	• Leather
<b>Steering wheel position adjustment</b>	• Manual up and down front and rear adjustment
<b>Multi-function steering wheel</b>	•
<b>Heated Steering Wheel</b>	-
<b>Steering wheel memory</b>	-
<b>Trip computer display screen</b>	• Color
<b>Full LCD instrument panel</b>	-
<b>Interior rearview mirror function</b>	• Manual anti-glare
<b>HUD Head Up Digital Display</b>	○

## Intelligent configuration

<b>Connected Car Services</b>	○
<b>OTA Updates</b>	-

## Driving Control

<b>Driving mode switch</b>	• Sport; • Economy; • Standard/Comfort
<b>Automatic parking</b>	-
<b>Hill start assist</b>	•
<b>Engine start-stop technology</b>	•

## Driving Hardware

<b>Front/rear parking radar</b>	Front •/Rear •
<b>Driving Assistance Camera System</b>	• Reversing image

## In-car charging

<b>Multimedia/charging port</b>	•USB;•Type-C
---------------------------------	--------------

## In-car charging (continued)

<b>Number of USB/Type-C ports</b>	• 2 in the front row/2 in the back row
-----------------------------------	--

## Optional Package

<b>Optional Package</b>	BMW navigation system and BMW standard interconnected driving combination (USD 2,265; Including: BMW navigation system, information online, remote assistance service );BMW enhanced navigation system and BMW enhanced interconnected driving combination (USD 5,500; Including: BMW enhanced navigation system, full color head-up display system, BMW enhanced interconnected driving combination, information online, remote assistance service, real-time road condition information, journey consultation service)
-------------------------	--

"●" = Standard equipment

"-" = Not available

"○" = Optional equipment.

Note: These are Chinese market vehicles. Warranty coverage is not available outside of China.