

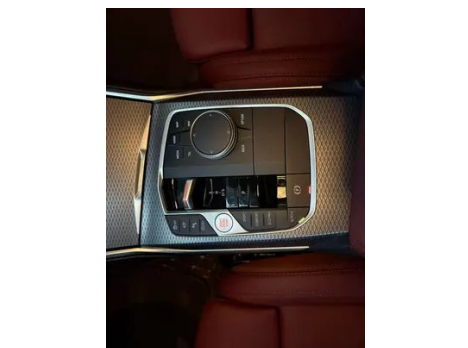
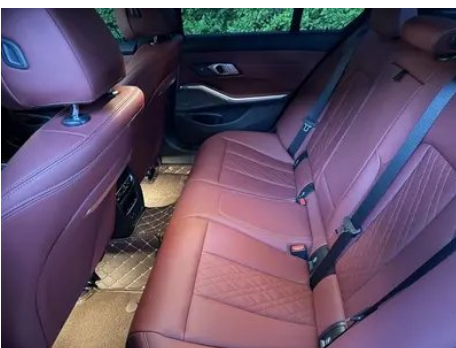
Vehicle Detail Report

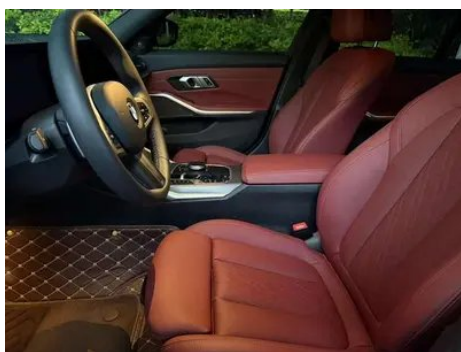
BMW 3 Series 2023 325i M Sports Night Suit

Basic Information

| | |
|--------------------|------------|
| Brand | BMW |
| Mileage | 20,000 km |
| Color | Black |
| First Registration | 2024-04-01 |
| Transfer Count | 0 |

Vehicle Images





Vehicle Condition

1. Original metal body panels with factory paint.

Configuration Information

Model Information

| | |
|--------------------|--|
| Model Name | BMW 3 Series 2023 325i M Sports Night Suit |
| Launch Date | 2022.08 |

Basic parameters

| | |
|--------------------------------|---------------------------|
| Vehicle Class | Mid-size car |
| Energy Type | Gasoline |
| Maximum Power (kW) | 135 |
| Maximum Torque (N·m) | 300 |
| Transmission | 8-gear manual integration |
| Body Type | Sedan |
| Engine | 2.0L 184 hp L4 |
| Dimensions (L×W×H) (mm) | 4728*1827*1452 |

Basic parameters (continued)

| | |
|---|------|
| Official 0-100 km/h Acceleration (s) | 7.6 |
| Top Speed (km/h) | 233 |
| Curb Weight (kg) | 1588 |
| Maximum Gross Weight (kg) | 2050 |
| WLTP Combined Fuel Consumption (L/100km) | 6.9 |

engine

| | |
|--------------------------------|------------------|
| Engine Model | B48B20C |
| Displacement (mL) | 1998 |
| Displacement (L) | 2.0 |
| Induction Type | Turbocharging |
| Cylinder Arrangement | L |
| Number of Cylinders | 4 |
| Valves per Cylinder | 4 |
| Valve Train | DOHC |
| Maximum Power (PS) | 184 |
| Max Power Speed (rpm) | 5000-6500 |
| Max Torque Speed (rpm) | 1350-4000 |
| Maximum net power (kW) | 135 |
| Fuel Grade | 95. |
| Fuel Delivery System | Direct injection |
| Cylinder Head Material | Aluminum alloy |
| Cylinder Block Material | Aluminum alloy |
| Engine layout | Longitudinal |

Screen/System

| | |
|---|---|
| Central control color screen | <ul style="list-style-type: none">• Touch LCD screen |
| Infotainment Screen Size | <ul style="list-style-type: none">• 14.9 inches |
| Bluetooth/In-car Phone | <ul style="list-style-type: none">• |
| Smartphone Integration/Mirroring | <ul style="list-style-type: none">• Apple CarPlay support |
| Voice recognition control system | <ul style="list-style-type: none">• Multimedia system;• Navigation;• Telephone;• Air conditioning;• Windows |

Screen/System (continued)

| | |
|--------------------------------------|---------|
| In-vehicle intelligent system | •iDrive |
|--------------------------------------|---------|

Body

| | |
|-------------------------------|------------|
| Length (mm) | 4728 |
| Width (mm) | 1827 |
| Height (mm) | 1452 |
| Wheelbase (mm) | 2851 |
| Front Track (mm) | 1583 |
| Rear Track (mm) | 1568 |
| Door Opening Type | swing door |
| Number of Doors | 4 |
| Number of Seats | 5 |
| Fuel Tank Capacity (L) | 59 |
| Trunk volume (L) | - |
| Drag Coefficient (Cd) | - |
| Approach Angle (°) | 15 |
| Departure Angle (°) | 18 |

Gearbox

| | |
|--------------------------|--|
| Abbreviation | 8-gear manual integration |
| Number of Gears | 8 |
| Transmission Type | Automatic Transmission with Manual Mode (AT) |

Chassis steering

| | |
|------------------------------|---|
| Drive Type | Front-engine, Rear-wheel drive (FR) |
| Front Suspension Type | Dual-ball-joint MacPherson independent suspension |
| Rear Suspension Type | Multi-link independent suspension |
| Power Steering Type | Electric power assistance |
| Vehicle structure | bearing type |

Seat Configuration

| | |
|-----------------------------|---|
| Seat Material | • Imitation leather |
| Main seat adjustment | • Front and rear adjustment; • Backrest adjustment; • Height adjustment (4-way); • Leg rest adjustment; ○ Lumbar support (4-way)(USD 206) |

Seat Configuration (continued)

| | |
|--|---|
| Co-seat adjustment method | <ul style="list-style-type: none">• Front and rear adjustment;• Backrest adjustment;• Height adjustment (4-way);• Leg support adjustment |
| Electric adjustment of driver's seat and passenger seat | Main •/Deputy • |
| Front seat functions | ○ Heating |
| Electric seat memory function | <ul style="list-style-type: none">• Driving position |
| Front passenger seat rear adjustable buttons | - |
| Front/rear center armrest | Front •/Rear • |
| Rear cup holder | <ul style="list-style-type: none">• |

Active safety

| | |
|---|---|
| Anti-lock Braking System (ABS) | <ul style="list-style-type: none">• |
| Electronic Brakeforce Distribution (EBD/CBC) | <ul style="list-style-type: none">• |
| Brake Assist System (EBA/BAS/BA) | <ul style="list-style-type: none">• |
| Traction Control System (ASR/TCS/TRC) | <ul style="list-style-type: none">• |
| Electronic Stability Control (ESC/ESP/DSC) | <ul style="list-style-type: none">• |
| Tire Pressure Monitoring System (TPMS) | <ul style="list-style-type: none">• Tire pressure display |
| Seat Belt Reminder | <ul style="list-style-type: none">• Front row |
| ISOFIX Child Seat Anchors | <ul style="list-style-type: none">• |
| Lane Departure Warning System (LDWS) | ○ |
| Autonomous Emergency Braking (AEB) | <ul style="list-style-type: none">• |
| Driver Fatigue Detection | <ul style="list-style-type: none">• |
| Forward Collision Warning (FCW) | <ul style="list-style-type: none">• |
| Emergency Call System (eCall) | <ul style="list-style-type: none">• |
| Built-in Dashcam | <ul style="list-style-type: none">• |

Air conditioning/refrigerator

Air conditioning/refrigerator (continued)

| | |
|--|------------------------------|
| Air conditioning temperature control method | • Automatic air conditioning |
| Rear Independent Climate Control | • |
| Rear seat air vents | • |
| Temperature zone control | • |
| Car air purifier | - |
| In-cabin PM2.5 Filter | • |

Passive safety

| | |
|--|-----------------|
| Driver/passenger airbag | Main •/Deputy • |
| Front/rear side airbags | Front •/Rear- |
| Front/rear head airbags (curtain airbags) | Front •/Rear • |
| Run-flat tires | • |
| Passive pedestrian protection | • |

Wheel brake

| | |
|---------------------------|--------------------|
| Front Brake Type | Ventilation disc |
| Rear Brake Type | Ventilation disc |
| Parking brake type | Electronic Parking |
| Front Tire Size | 225/45 R18 |
| Rear Tire Size | 255/40 R18 |
| Spare Tire Size | None |

Audio/Interior Lighting

| | |
|----------------------------------|-------------------------------|
| Speaker Brand Name | • Harman/Kardon Harman Kardon |
| Number of speakers | • 16 speakers |
| Interior ambient lighting | •9 colors |

Driving functions

| | |
|---|---|
| Navigation traffic information display | • |
| Lane assist | ○ |
| Lane Keeping Assist System | ○ |
| Cruise control system | • Constant speed cruise; ○ Full speed adaptive cruise (USD 868) |
| Satellite navigation system | • |

Driving functions (continued)

| | |
|--------------------------------------|-----|
| Driving assistance level | ○L2 |
| Rear Cross Traffic Alert | ○ |
| Lane centering | ○ |
| Road traffic sign recognition | ○ |
| Tracking reverse | • |
| Parking Assist | • |
| Lane Change Assist | ○ |

Exterior lighting

| | |
|-------------------------------------|--------------|
| Low beam light source | •LED |
| High beam light source | •LED |
| LED daytime running lights | • |
| Adaptive high and low beam | ○(USD 1,338) |
| Automatic headlights | • |
| Height-adjustable headlights | • |
| Headlight Delay Off | • |

Exterior mirrors

| | |
|---------------------------------|---|
| Exterior mirror function | • Electric adjustment; • Electric folding; • Rearview mirror memory; • Rearview mirror heating; • Automatic downturning when reversing; • Automatic folding when locked; • Automatic anti-glare |
|---------------------------------|---|

Appearance/anti-theft

| | |
|--|------------------|
| Rim material | • Aluminum alloy |
| Electric trunk | ○ |
| Electronic engine immobilizer | • |
| Central locking system in the car | • |
| Key Type | • Remote key |
| Keyless start system | • |
| Keyless entry function | • Full vehicle |
| Appearance Kit | • Sports style |
| Hands-free Trunk | ○ |

Appearance/anti-theft (continued)

| | |
|------------------------------|---|
| Remote start function | ○ |
| Active closed grille | • |

Skylight/Glass

| | |
|--|---|
| Sunroof Type | • Electric sunroof |
| Front/rear electric windows | Front •/Rear • |
| One-touch window lifting function | • Full vehicle |
| Window anti-pinch function | • |
| Car makeup mirror | • Main driver's lamp; • co-pilot's lamp |
| Rear wiper | - |
| Rain sensor wiper function | • Rainfall-sensing |

Interior and exterior color

| | |
|-----------------------|--|
| Exterior Color | Carbon black:#232A30; Porty blue:#1459A0; Coast blue:#0085A4; Ore white:#E7E7E7; Skyscraper ash:#808686; Melbourne Red:#610303 |
| Interior Color | Black/Volcanic Red:#000000/#8A3D47; Black:#000000; Black/Mocha:#000000/#423534; Volcanic Red/Black:#8A3D47/#000000 |

Steering wheel/interior mirror

| | |
|---|--|
| Steering Wheel Material | • Leather |
| Steering wheel position adjustment | • Manual up and down front and rear adjustment |
| Multi-function steering wheel | • |
| Heated Steering Wheel | - |
| Steering wheel memory | - |
| Trip computer display screen | • Color |
| Full LCD instrument panel | • |
| LCD instrument size | • 12.3 inches |
| Interior rearview mirror function | • Automatic anti-glare |
| Gear shifting | • Electronic gear shift |

Steering wheel/interior mirror (continued)

| | |
|-------------------------------------|---|
| HUD Head Up Digital Display | <input type="radio"/> (USD 1,471) |
| ETC Device | <input type="radio"/> (USD 147) |
| Steering Wheel Shift Paddles | <ul style="list-style-type: none">• |

Intelligent configuration

| | |
|-----------------------------------|--|
| Connected Car Services | <ul style="list-style-type: none">• |
| OTA Updates | <ul style="list-style-type: none">• |
| 4G/5G Network | <ul style="list-style-type: none">• 4G; <input type="radio"/> 5G (USD 441) |
| Mobile APP remote function | <ul style="list-style-type: none">• Door control;• Vehicle start;• Lighting control;• Climate control;• Vehicle status check/diagnostics;• Vehicle location / find my car |
| Wi-Fi hotspots | <ul style="list-style-type: none">• |

Driving Control

| | |
|-------------------------------------|---|
| Driving mode switch | <ul style="list-style-type: none">• Sport;• Economy;• Standard/Comfort;• Customization/Personalization |
| Automatic parking | <ul style="list-style-type: none">• |
| Hill start assist | <ul style="list-style-type: none">• |
| Engine start-stop technology | <ul style="list-style-type: none">• |

Driving Hardware

| | |
|---|---|
| Front/rear parking radar | Front <ul style="list-style-type: none">• /Rear <ul style="list-style-type: none">• |
| Driving Assistance Camera System | <ul style="list-style-type: none">• 360-degree panoramic image |

In-car charging

| | |
|--|--|
| Multimedia/charging port | <ul style="list-style-type: none">• USB;• Type-C |
| Number of USB/Type-C ports | <ul style="list-style-type: none">• 2 in the front row/2 in the back row |
| Mobile phone wireless charging function | <input type="radio"/> Front row (USD 279) |

Optional Package

Optional Package (continued)

| Optional Package | |
|------------------|--|
| | Entertainment Suit 2 (1900 yuan Contains Wireless phone charging) Comfortable Suit (4600 yuan Contains Rear trunk lid with automatic control) Winter suit (5000 yuan Contains Front seat heating function Remote engine start) Innovative Suit (10000 yuan Contains Intelligent Connected Cockpit (With full color head-up display system) |

"●" = Standard equipment

"-" = Not available

"○" = Optional equipment.

Note: These are Chinese market vehicles. Warranty coverage is not available outside of China.